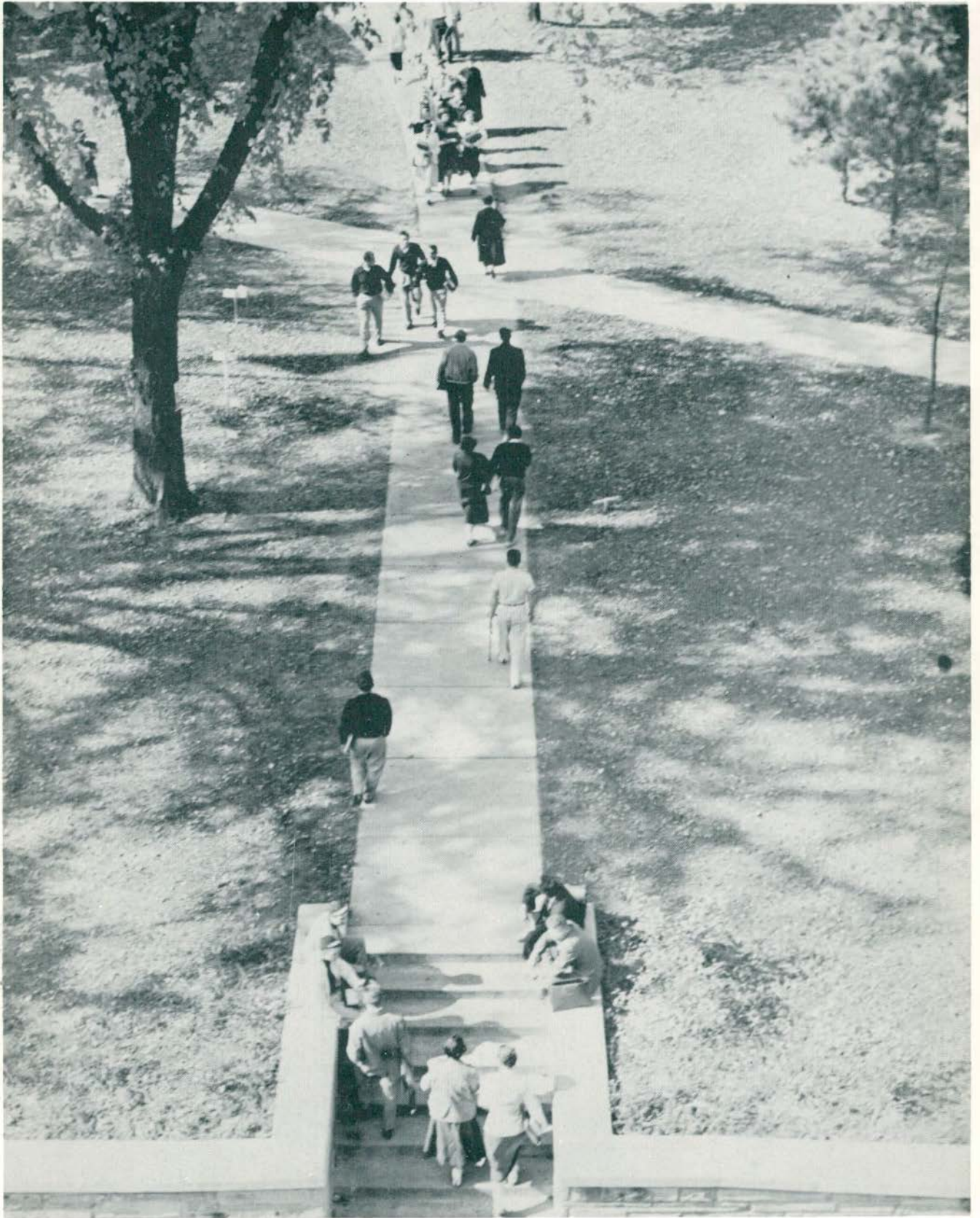


*the Aurora*  
1954

**MICHIGAN STATE NORMAL COLLEGE**  
YPSILANTI, MICHIGAN

*Keeping Pace With Normal*



*Keeping Pace With Normal*

# *Aurora*

*1954*

Published by the student body of  
MICHIGAN STATE NORMAL COLLEGE  
Ypsilanti, Michigan



The sixty-second edition of the

*Aurora*

Doris Johnson, Editor

Thelma Mott, Business Manager

Violet Cushnack, Activities Editor

## **STAFF**

Florence Ambrose  
Caryl Leon  
Madge Lindsay  
Phyllis Neuman  
Doreen Picard

Jo Roberts  
Kay Slick  
Fern Swenson  
Jane Vander Meer  
Rick Wilgus





BRUNNEN  
1954



# *Contents . . .*

<b>Academic . . . . .</b>	<b>11</b>
<b>Athletic . . . . .</b>	<b>23</b>
<b>Greek . . . . .</b>	<b>33</b>
<b>Organizations . . . . .</b>	<b>63</b>
<b>Seniors . . . . .</b>	<b>91</b>
<b>Activities . . . . .</b>	<b>129</b>





## *In Memoriam*



Orlo M. Gill, who was, for many years, head of the Art Department, endeared himself to students and associates alike by his kindness and patient understanding. His loyalty and spontaneous enthusiasm inspired genuine confidence and professional leadership.

He was one of the fortunate few whose life and that of Michigan State Normal College were one, beginning with his early days in kindergarten, and continuing to November, 1953. With the exception of military service in World War I, and the years in which he gained his professional background of study and experience, his life was given to our campus.

He became a member of Phi Delta Pi, Alpha Chapter, in 1915, and was made its patron in 1943. He served as advisor of the Aurora staff for the years from '44 through the centennial year of '49.

His strong, sensitive paintings and etchings, as well as his rare humility of spirit and infinite love of youth, will forever live in our memories.



Each succeeding year will add new value to your Aurora. Real satisfaction will come from re-reading the 1953-54 history of Michigan Normal. Joys and disappointments, pleasures and frustrations will parade again in aroused memories. It may be a particular dance or a special group of friends that will get attention. The clothes we wear today will appear so odd within a decade. "Hairdo's" change and few will keep the slender lines of youth.

The efforts of the 1953-54 Aurora staff merit special commendation. Although faced with many difficult problems, each has been solved by the students. As a result, student interest and student responsibility has been encouraged.

Making contracts, meeting deadlines, selling advertising, and finally selling books provide sound experiences for bigger problems throughout life.

Michigan State Normal College is proud of the student achievements and as a college we are especially appreciative of the 1953-54 Aurora.

Eugene B. Elliott  
President





**DEAN E. R. ISBELL**

The Dean of Administration's office is thronged each semester with bewildered students with confused class programs, and if a solution is possible, Dean Isbell will find it.



**DEAN EARL E. MOSIER**

All prospective teachers have been to the office of Earl Mosier, Dean of Professional Education, for the fine advice he is known to offer.



The welfare and interest of all women enrolled at M.S.N.C. is the chief concern of **Miss Susan B. Hill**, Dean of Women.

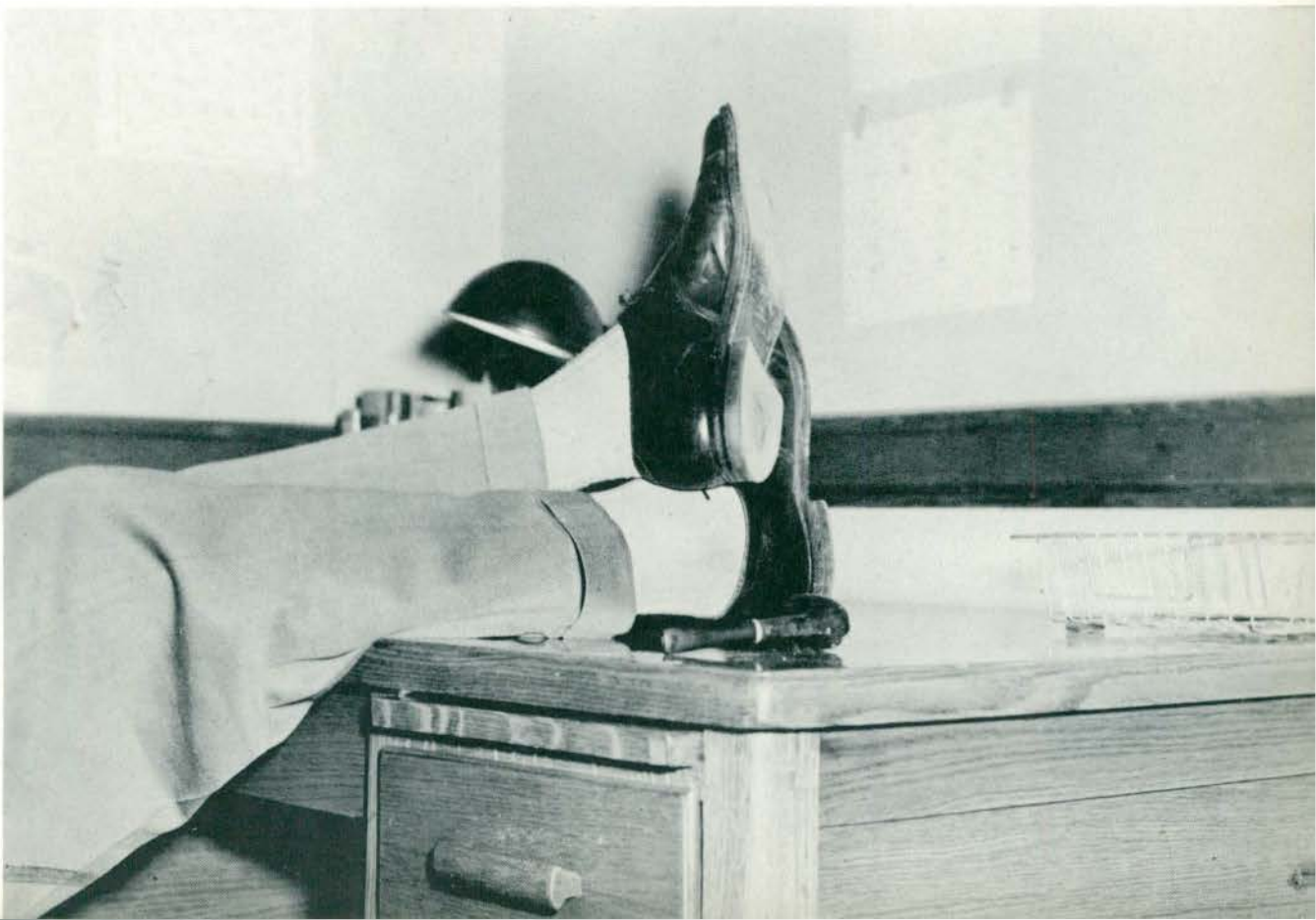


**Mr. James M. Brown**, Dean of Men, always has time to talk things over with the men students.



# *Academic*

Arts Building  
Pierce & Library  
Hover & Science  
Welch  
Home Economics House  
Gym  
Rackham  
Lincoln & Roosevelt  
Pease  
R.O.T.C.





## Arts Building

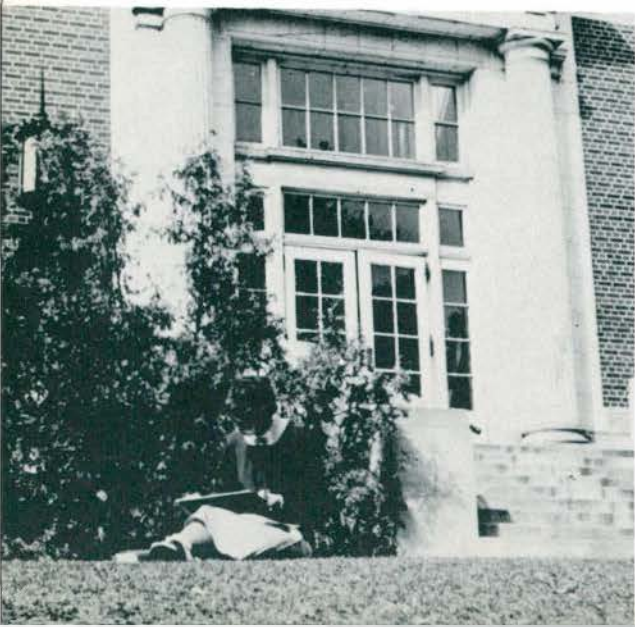
There is opportunity for all students to show their creative talent in the fine arts department. Courses are offered in the basic elements of art, in color, in still life and life drawing, in various phases of design, and in sculpture and ceramics. Displays and exhibits throughout the year give the entire campus a chance to appreciate the work of the art students.

For those interested in practical arts, the

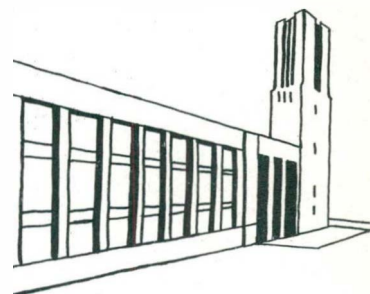
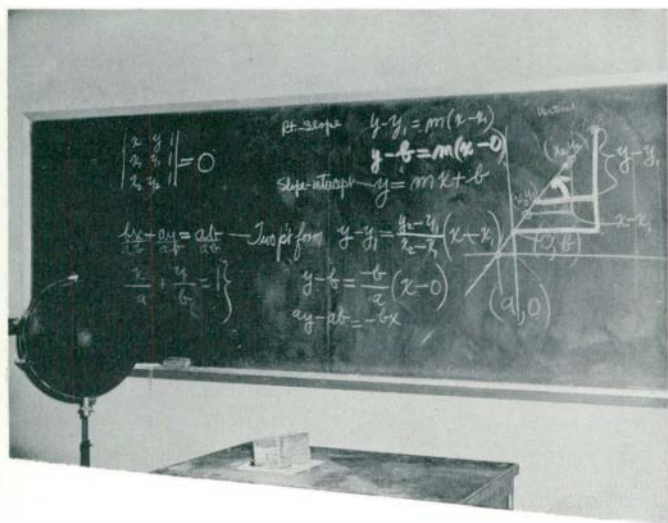


industrial arts department has a variety of courses. Students of elementary and high school teaching, occupational therapists, and students at Roosevelt High School are able to learn the fundamentals of printing, woodwork, metalwork, and other useful crafts.

The audio-visual aids department, duplicating services, and the Aurora office are also located in the Arts Building.





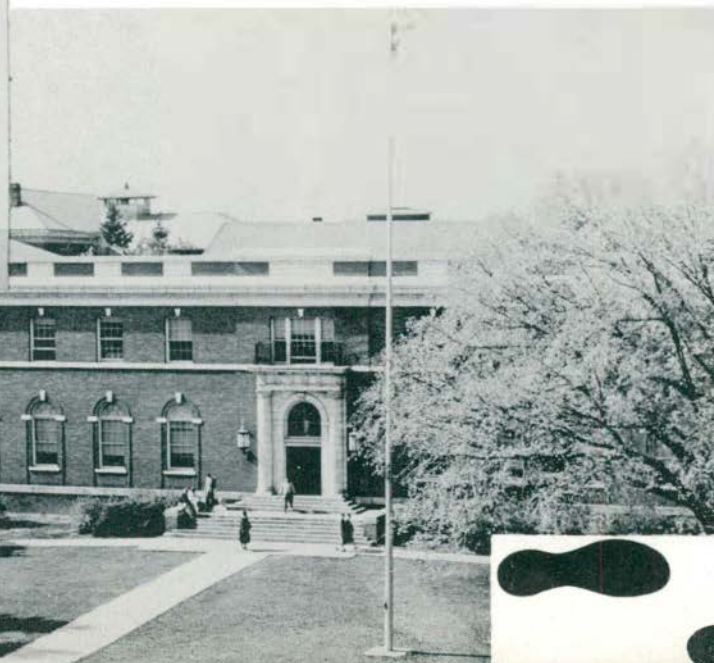


## Pierce

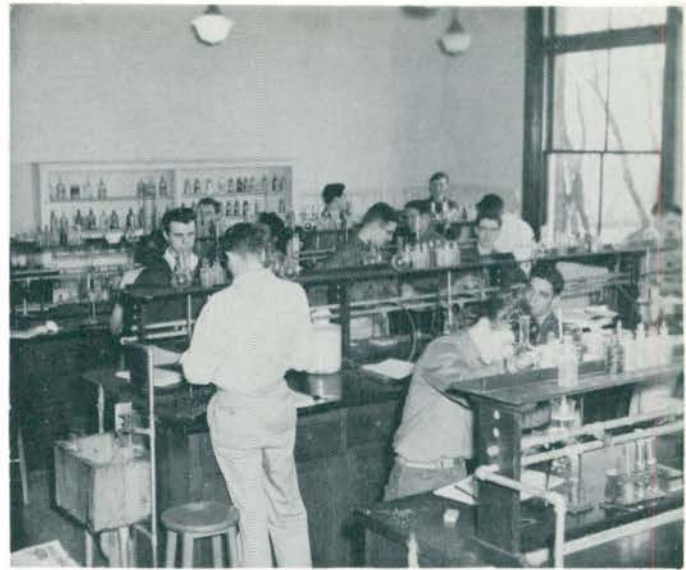
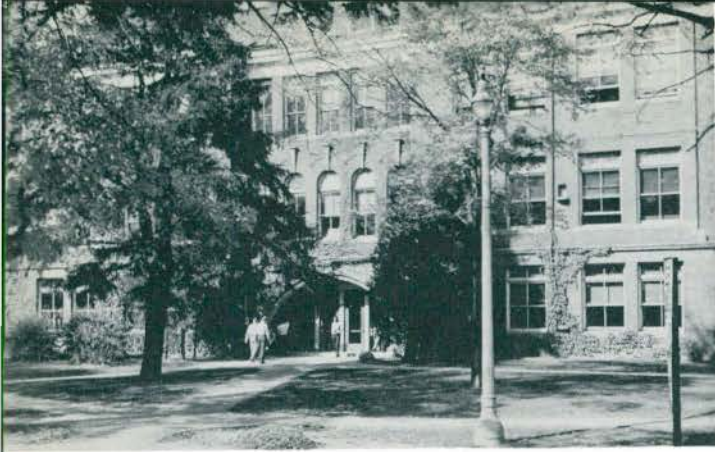
Pierce Hall houses the offices of the president, the deans, and other administrative officials. The departments of English, speech, mathematics, and education have their headquarters here as well.

## Library

The library science department is located here. Various departments also use the library classrooms. The library cooperates with all other departments by providing students with the information they need to complete their assignments.

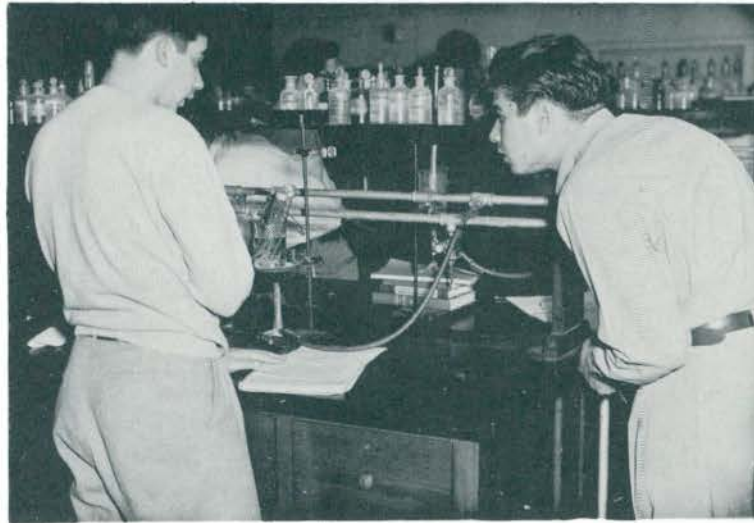




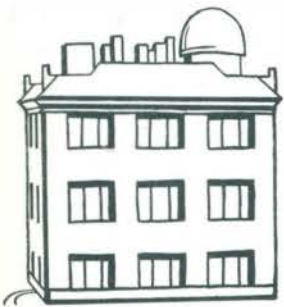


Physics, astronomy, chemistry, zoology—these are only a few of the courses that give us knowledge of the world around us. Students can do much to satisfy their scientific curiosity here in the Science Building.

## Science



## Hover



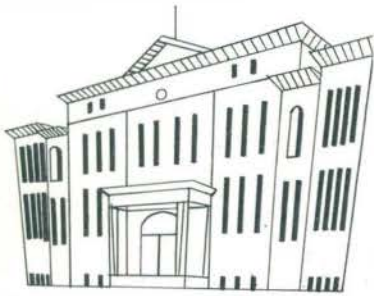
Various forms of plant life are studied here and in the adjoining green-houses. Together these buildings offer facilities for a complete and well-rounded science program.







## Welch

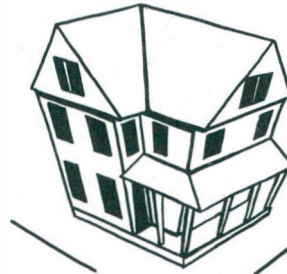


Numerous activities take place in Welch Hall. Many departments use its facilities. The departments of history, sociology, political science, military science, business education, and home economics are all found within the building. Welch Auditorium is used for play production work and small assemblies.





# Home Management House



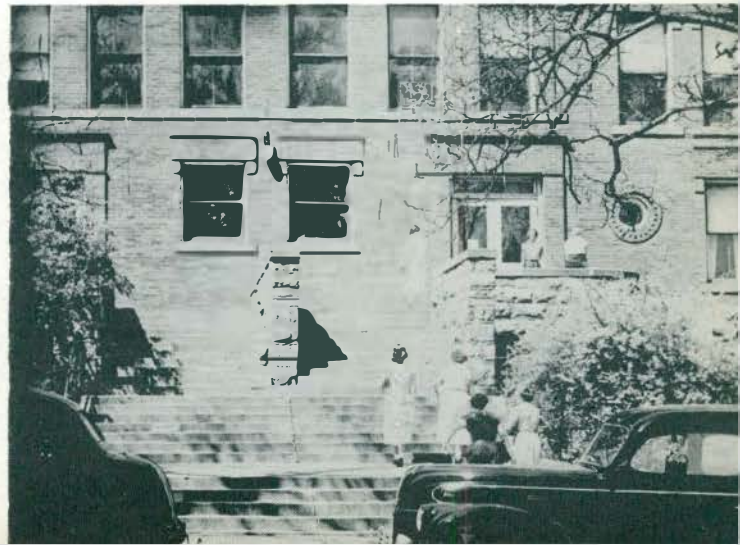
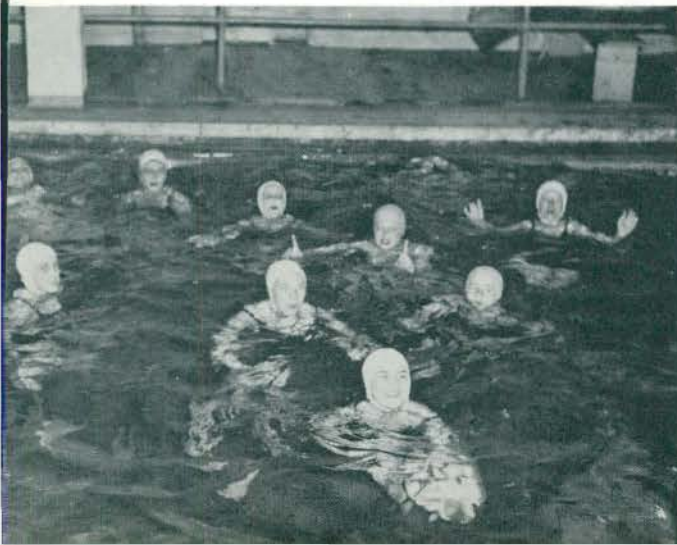
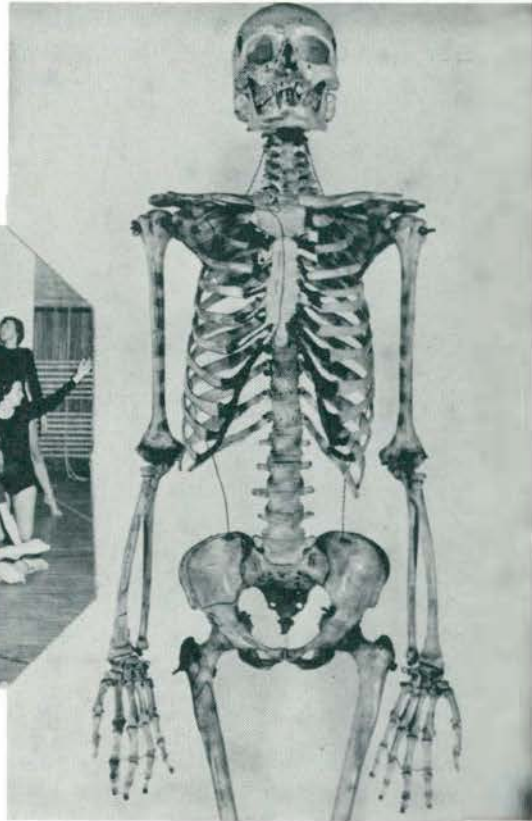
Living in the home management house is only one phase in the home economics curriculum. After learning the fundamentals of foods, clothing, and other courses in class, the girls put the knowledge to practical use here. The department is situated in Welch Hall; the management house is on Perrin Street.





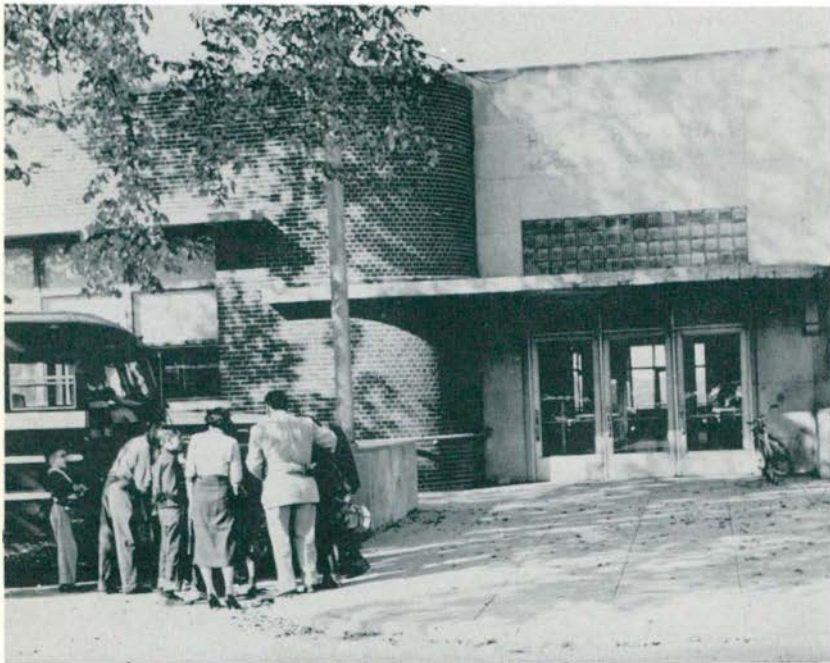
# Gymnasium

The facilities of the physical education department have been used and enjoyed by all students on campus. The skeleton is a familiar symbol of anatomy class that many will recognize. Activity courses are valuable for educational content as well as for the exercise and energy release that they give. The promotion of the health and happiness of the students is a chief aim of the department.

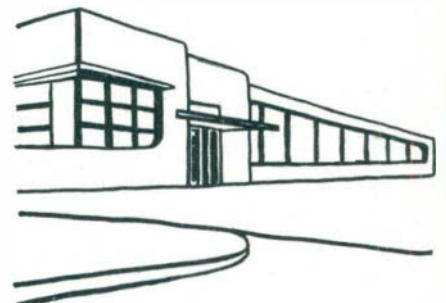




# Rackham



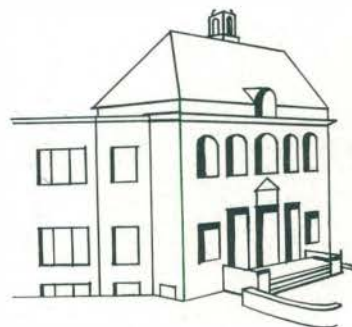
The Horace H. Rackham School of Special Education is a nationally known institution on our campus. Occupational Therapy and Special Education are the curricula offered here. Special classes are given for handicapped children. Dormitory facilities are provided for them. Here students are given an opportunity to teach and learn to understand the exceptional child.





# Lincoln and Roosevelt

Student teaching gives the future teacher an opportunity to have practical experience before graduation. The laboratory schools have excellent facilities for students to gain teaching experience under trained supervisors.







# Pease Auditorium



MSNC students all have fond memories of assemblies and concerts which they attended in Pease Auditorium. The hall was especially built to give the finest acoustics for concert work. The department of music is located here. Courses in music education, music appreciation, and theory are offered. Solo lessons are given for both voice and instruments. The band, the orchestra, the choral union are important campus activities. The final moments of college life take place here when we meet for graduation.







**Choral Union**



**Band**



**Orchestra**





### CADET OFFICERS

- Row 1 | D. Ferguson, T. McKinney, R. Rogers, J. Levack, M. Pavlik, J. Stolin.  
 Row 2 | D. Dunham, R. Westcott, J. Taylor, J. Buster, K. Kraus, L. Cochran, J. Hurbis.  
 Row 3 | T. Peebles, J. Binnbanm, B. Driest, C. Pardon.

## R. O. T. C.

The presentation of the first annual Military Ball, which was held on January 15, 1954, proved to be one of the most colorful and striking dances of the year. The ROTC Drill Team made its first appearance at intermission, and they captivated the attention of all those present. A Court of Honor consisting of five coeds each received the rank of honorary captain.

The spring found the Cadets preparing for their annual review on Federal Inspection Day. The battalion and companies were sponsored by the coeds that went to make up the court of honor. On this day two cadets received a gold and silver medal awarded by the Chicago Tribune.





# *Sports*

Football  
Track  
Cross Country  
Basketball  
Baseball  
Cheerleaders  
W.R.A.







Row 1: H. Carroll, T. Waldron, J. Geisler, V. Badalow, B. Boyd, E. Skowenski, D. Mead, D. Wilkins, J. Cook, D. Clark, V. Windom.  
 Row 2: D. Tarbutton, B. Hollifield, J. Zizzi, G. Melzow, J. Haywood, B. McCullough, J. Becker, K. Eber-

sole, B. Basel, R. Oestrike, B. Middlekauff, T. Fagan.  
 Row 3: C. Washington, D. Schiska, D. Vanek, N. Manych, C. Dixon, B. Biddle, D. Ebert, D. Mosley, B. Williams, L. Sherman, B. Broad.

Two weeks before registration began, approximately fifty men began working out on the gridiron in preparation for the 1953 season. Little did anyone know at the time that it was to be the most exciting and prosperous year that Michigan Normal gridders have had in almost a decade.

Our Hurons opened with a win, and in spite of some close calls, did nothing else for six games, earning themselves the honor of being the only unbeaten college team in the state.

The law of averages won out, however, and we were humbled by Western Illinois. With one chance remaining for a share of the league championship, we went out to get Central, and it took a breathtaking seventy yard pass for the Chippewas to tie us in the final minutes.

We ended the year with a 7-1-1 record and third place in the IICAC, and were amply rewarded for our fine team by having three of our players, Nick Manych, George Melzow, and Bob Middlekauff, named to the All-Conference team.

## Football







**M. S. N. C. Coaches**



**Fred Trosko, Bob Hollway, Philip Yanaschik**



## 1953 Track

Track, under the guidance of Coach George Marshall, again saw the Hurons emerge as the top team in the IIAC, winning the conference championship once more as they have ever since their entrance into the league.

Although losing meets to such schools as Marquette, Michigan State, Notre Dame and Miami University, the Hurons beat competition, when they could find any, of their own size. They whipped Central Michigan, to whom Normal has never lost a track meet in the history of the rivalry and took first place in the Elmhurst Relays.

Marshall's men displayed their individual abilities in a number of meets which the team as a whole did not enter, including the Michigan AAU, the State Relays, and the Cleveland K. of C. Relays, where individuals placed well in a number of events.

It was, all in all, another successful year for Michigan Normal in the track world.





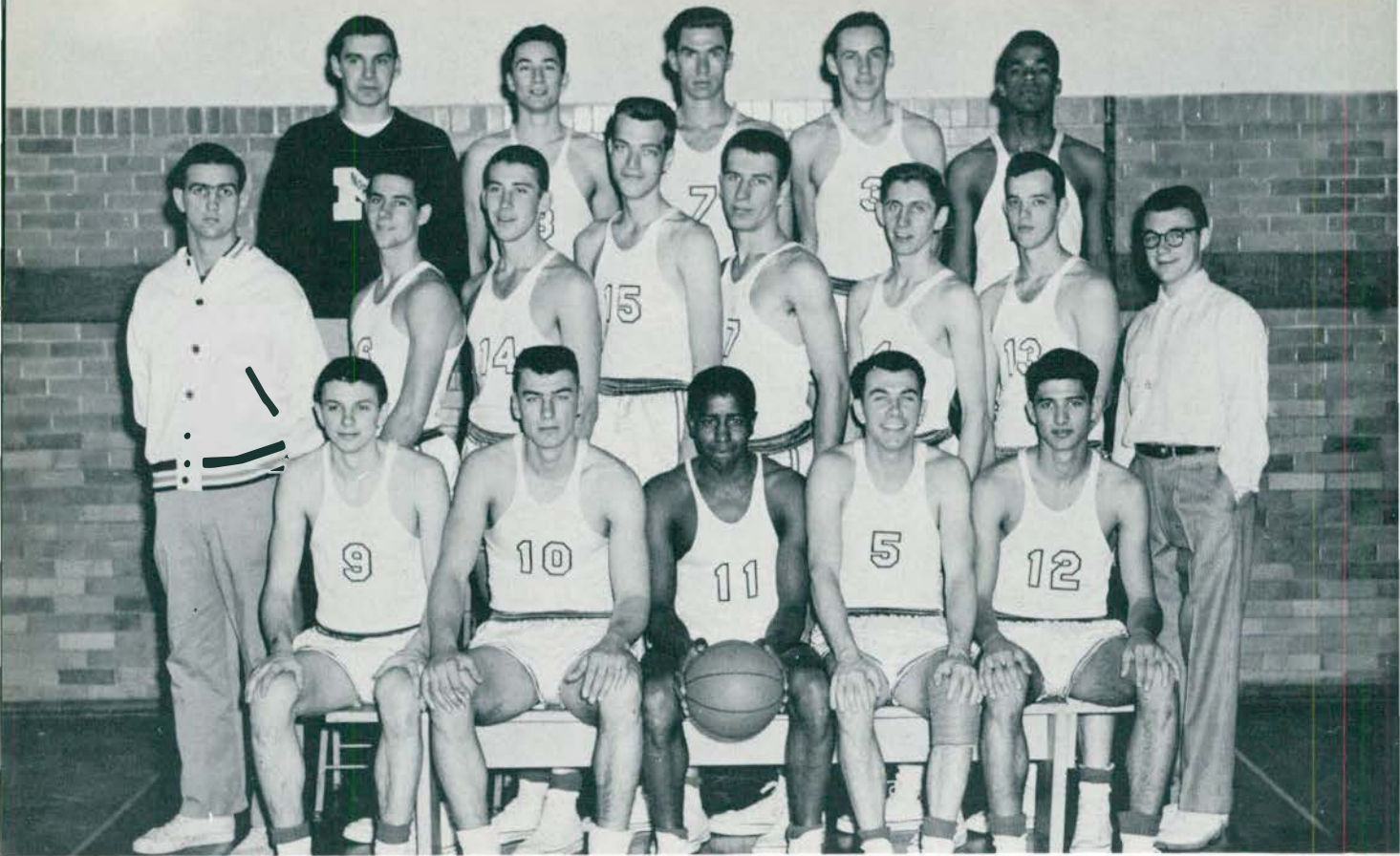
Row 1: R. Gould, R. Rowland, R. Papp (captain), J. DiComandrea, L. Halley.  
 Row 2: Coach G. Marshall, G. Yates, G. Zitny, C. Culver, B. Chapman, T. Amerman.  
 Row 3: P. Stamos, K. Santer, J. Schuch, B. Rockman, M. Hoag, Mgr.

## Cross Country

Cross Country went its usual happy way in 1953, with Coach Marshall again producing a winning team. This year, as every other year since Normal's entrance into the IIAC, they won the conference cross country meet, which was held at Eastern Illinois State College.

Although only three dual meets were run, two of them ended up on the winning side of Normal's record book. Closest of all was the exciting meet against Western Michigan, in which we barely edged out the Broncos 28-29.

In the other two dual meets, we beat Central Michigan 23-24, and lost to Miami of Ohio 35-20. Huron harriers garnered a second place in the Michigan AAU behind Michigan State. Bob Rowland, Normal's speediest four-miler, came in seventeenth in the National Collegiates, running against the best college distance runners in the nation.



Row 1: B. Woodward, N. Manych, C. Gilliam, E. Bossenberry, D. Preketes.  
Row 2: Coach Hollway, H. Minor, B. Dank, H. Joint, J. Czanko, L. Bortz, J. Wise, K. Seng.  
Row 3: D. Vanek, R. Pogliano, C. Tschirhart, B. Henderson, C. Jewett.

## Basketball

With three-fifths of last year's starting five gone, Coach Bob Hollway was faced with a major rebuilding problem in his first year at Michigan Normal. Only Nick Manych and Cleon Gilliam were back to form a nucleus for the 1953-54 Hurons.

The team jumped off to a fine start with a pair of wins, but the going got rougher and they dumped seven games before they came up with another pair of wins. Captain Webster (Pretty Web) Kirksey, the Saginaw basketeer, regained his eligibility at the start of the second semester, and with his help the team won four of their last eight games, all over teams which had previously beaten them.

The last four wins were all league victories and gave the Huron cagers a 4-8 record in the conference and pulled them up into sixth place in the IIAC. The over-all record for the year was eight wins and twelve losses.





**Captain Web Kirksey**





Row 1: L. MacDonald, R. Oestrick, E. Steinhart, L. Mawby, R. Hill, W. Quick, B. McGuire, J. Griffin, P. Temple, B. Williams, S. Juzysta.  
 Row 2: (Mgr.) R. Wischer, E. Bossenberry, C. Hatch, A. Whited, C. Gilliam, S. Tomczyk, D. Richards, N. Manych, D. Mosley, B. Rock, (Coach) B. Crouch, (Mgr.) G. Melzow, (Tr.) H. Collins.

## Baseball 1953

Baseball ranked as one of Michigan Normal's more successful sports in '53 as the squad came up with a 14-6 won and lost record for the year, and took second place in the IIAC with a 9-3 mark.

The early practice advantage which the Illinois teams have as a result of their southerly location proved a curse to the Normal nine and they dropped their first two games of the year to Southern Illinois.

The losses presaged a nine game winning streak, however, before they met their final league loss against Western Illinois. U. of D. and Southern were only teams able to dump Normal twice as the Hurons swept series from all but Bowling Green and Western Illinois, with whom they split.

Their fine record marked the seventh time that teams coached by Huron mentor, Bill Crouch, have had a winning season since his arrival in 1945.





Row 1: J. Helm, E. Ericson, J. McClellan.  
Row 2: A. Stan, K. Colthord, G. Torpinion.

## Cheerleaders

Last spring, elections were held to choose a captain for the cheerleaders, and Ed Ericson and Jane Helm were chosen to be co-captains during this entire year. Tryouts were held this fall, bringing Jenny Walters, Irms Crowley, Phyllis Ernst, and Jerry Osler to the squad. Miss Morris was the faculty sponsor. Returning members of the squad were Aurelia Stan, Ed Ericson, Genny Tarpinian, Joanne McClellan, and Janie Helm.

High lighting the football season were two pep rallies and Homecoming, which proved very successful. Led by the cheerleaders holding flaming torches, the crowd at the Homecoming Pep Rally went on a snake dance which ended in the hollow around a big bonfire. The singing of the school song and many cheers climaxed the pep rally.



Row 1: C. Germain, M. Benson, M. Hickson, I. Olah, C. Esemah, D. Rowe, M. Donnelly, B. Howell.  
 Row 2: M. Nelson, N. Prater, D. Gianelli, D. Bean, Miss Verda, J. Lindeman, J. Watson, P. Odgers, E. Snyder.  
 Row 3: F. Dimas, B. Peterson, B. Stevens, J. Anderson, E. Dennison, P. Kroneck, S. Keagle, M. Seidenschwarz, M. Brown, D. Coville.

## Women's Recreation Association

The Women's Recreation Association had a dynamic school year in 1953-54. In the fall semester, we began with the Athletic Federation of Michigan College Women Convention held at Clear Lake Camp. Our W.R.A. was president school and a superb convention was the result.

In the Homecoming Parade, we took second place of the club floats with our theme "Dog, Paddle 'r' way Home".

During the Yule-tide season, we were busy. First there was the "House of Skill" which occupied many people during the all-campus Christmas Party, next was the board's Christmas Party, carolling, then the Christmas Sing with "Joy to the World".

The spring semester brought the ever popular co-educational nights. We were very pleased

to have such big crowds.

In May came the two big events, the weekend camp at Mill Lake, and the annual banquet.

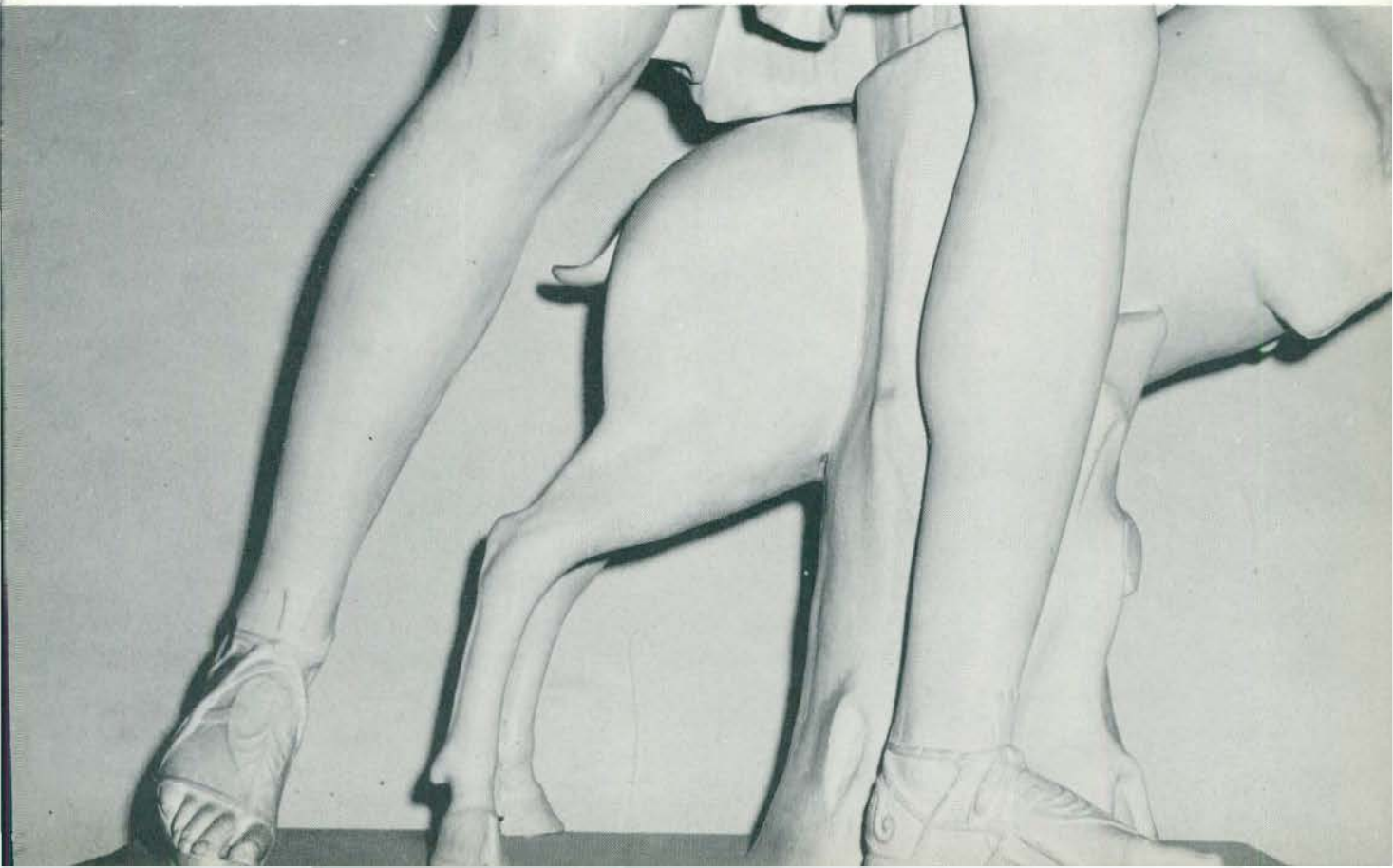
Many W.R.A. members enjoyed the play days that they participated in. For the first time, we awarded plaques to the winning teams or individuals in all sports. The blazers which we purchased for board members and our scrapbook are new too. Both have the official W.R.A. emblem.

We also welcomed to W.R.A. our new advisor, Miss Martha Verda. Miss Verda, along with the other officers, Doris Bean, president, Joyce Lindeman, vice president, Dolores Gianelli, secretary, and Joan Watson, treasurer, and the other board members have made a very successful year.



# *Greek*

Sororities  
Fraternities  
Honorarys





Row 1: S. Hedges, G. Turner, B. Conaughty, M. Fritz, P. Hoy.  
Row 2: E. Weldon, G. Trotter, W. Cox, A. Strohl, C. Leon, P. Brown.

## Panhellenic Council

The Panhellenic Council is made up of two representatives from each sorority on our campus. It is this council that promotes the working together of our sororities. It also guides fall and spring rushing.

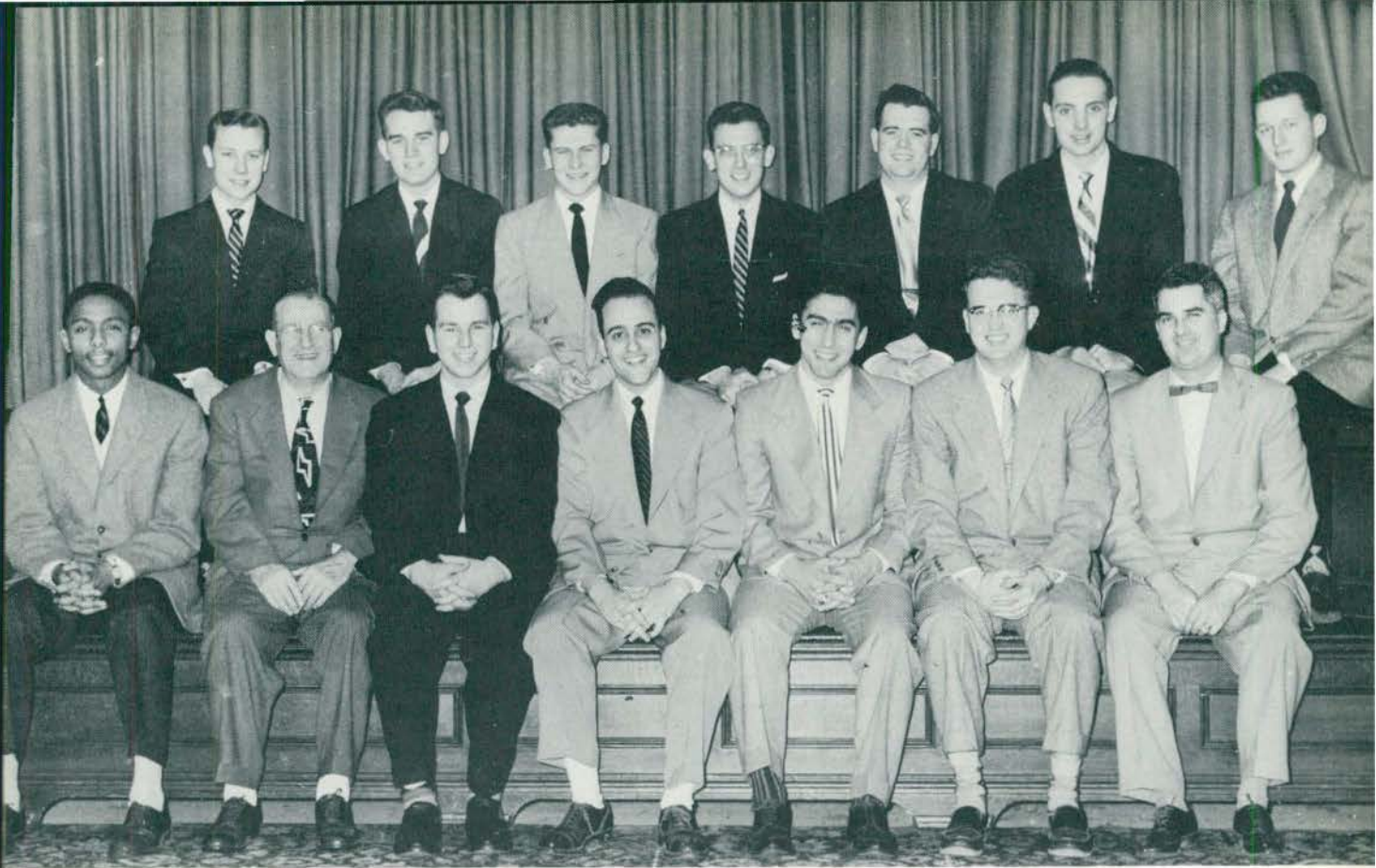
We had many new projects this year. A committee was established to hold a special rushing period for one of our sororities to help build their membership. After each pledging period, all of the pledges from all sororities were responsible for a Panhellenic pledge project.

This spring we had Pledge Cotillion, where each new sorority pledge was formally presented.

The Panhellenic Scholarship Cup was awarded to the sorority with the highest academic standing at our annual Spring Dessert.

The officers for this year were: Berni Conaughty, president; Marilyn Fritz, recording secretary; Garvella Turner, treasurer; and Anita Castellucci, corresponding secretary. Dean Susan B. Hill is our sponsor.





Row 1: J. Nixon, J. Brown, J. Sventko, M. Sole, J. Nicito, B. Foy, F. Loruimon.  
Row 2: D. Sevey, B. Weiss, J. McNolly, J. Burzick, W. Hunter, D. Soule, F. Appleyord.

## Interfraternity Council

The Interfraternity Council is composed of two men for each recognized fraternity. The I. F. C. channels and coordinates the efforts and energies of these fraternities and regulates rushing and pledging. The council also sponsors the annual Shamrock Swirl held in March; later in the year the group sponsors an all-Greek hayride and picnic.

This year's officers were Mike Sole, president; Bob Chapelli, vice-president; Joe Sventko, recording secretary; Bob Fay, corresponding secretary; and Joe Nicita, treasurer.

Under the capable guidance of Mr. Lamiman and Dean Brown, this year has been very successful for the Interfraternity Council.



Row 1: R. Hill, R. Franks (Vice Pres.); J. Mayfield, B. Havard (Pres.); E. Weldon (Corres. Sec.); G. Turner (Sec. and Treas.); H. Dickerson.

Row 2: C. Collier, J. Warren, M. Rogers, J. Conley, I.J. Stephens, B. Pringle, D. Vaughn, E. Allmon.

## Alpha Kappa Alpha

Another full and eventful year was had by the women of Xi Chapter, Alpha Kappa Alpha.

The calendar activities for 1953-54 were begun with the civic project of folding bags for Beyer Hospital. Thanksgiving

arrived, and a basket was given to a needy family in Ypsilanti. Christmas came like a flash and the pledges gave a Christmas party for the pre-school children at Parkridge Community Center.

December 6 marked the date of our mass initiations of probates from five colleges and universities. Following the ceremony, a banquet and dance were given in honor of the neophytes.



January 10 was soon upon us and time to observe our Founders' Day which we did by giving our annual tea at Starkweather Hall with the assistance of our graduate chapter, Delta Psi Omega. We sincerely appreciated the presence of faculty members and other sorority members who helped us to make this day a memorable one.

May 1 was the date for our annual semi-formal, the Akabaile, held in the Fred Green Ballroom of McKenny Hall.

In the spring came "Help Week", with the pledges performing odd jobs in the Library, Roosevelt High School, the Health Center, and Starkweather Hall.

We are hoping that the year 1954-55 will be even more successful!





Row 1: M. Hall, D. Schwartz, J. Norton, M. Deleruyelle, D. Renwick, M. Tamblyn, S. Whitney, B. McDonald, E. Beach.  
 Row 2: P. Davis, M.L. Bonadio, D. Olds, C. Floyd, Mrs. W. Bates Advisor; D. Noffsinger (Pres.); S. Boyer,

J. Crowe (Corres. Sec.); J. Townsend, B. Gustofson (Treas.).  
 Row 3: L. Serant, B. Bommel, C. Fontow, P. Wolfe, P. Boussoulos, D. Rice, M.L. Furay, W. Cox, P. Hebb, E. Berridge, G. Walter.

## Alpha Sigma Tau

The 1953-54 calendar for Alpha Sigma Tau has held many successful activities. The month of October saw everyone busily preparing for our Homecoming Cider Sip and working on the float. On Homecoming day, all our work was rewarded, for our float won first prize.

On November 7, we held the traditional Founder's Day Luncheon. It was at this function that we were able to greet many of our alumni.

After fall rushing, our thoughts turned to the Christmas season. We were kept busy providing for a needy family, packing toys for the Pine Mountain Settlement School in Kentucky and practicing for the All-College Christmas

Sing. We also carolled at Bar Hospital.

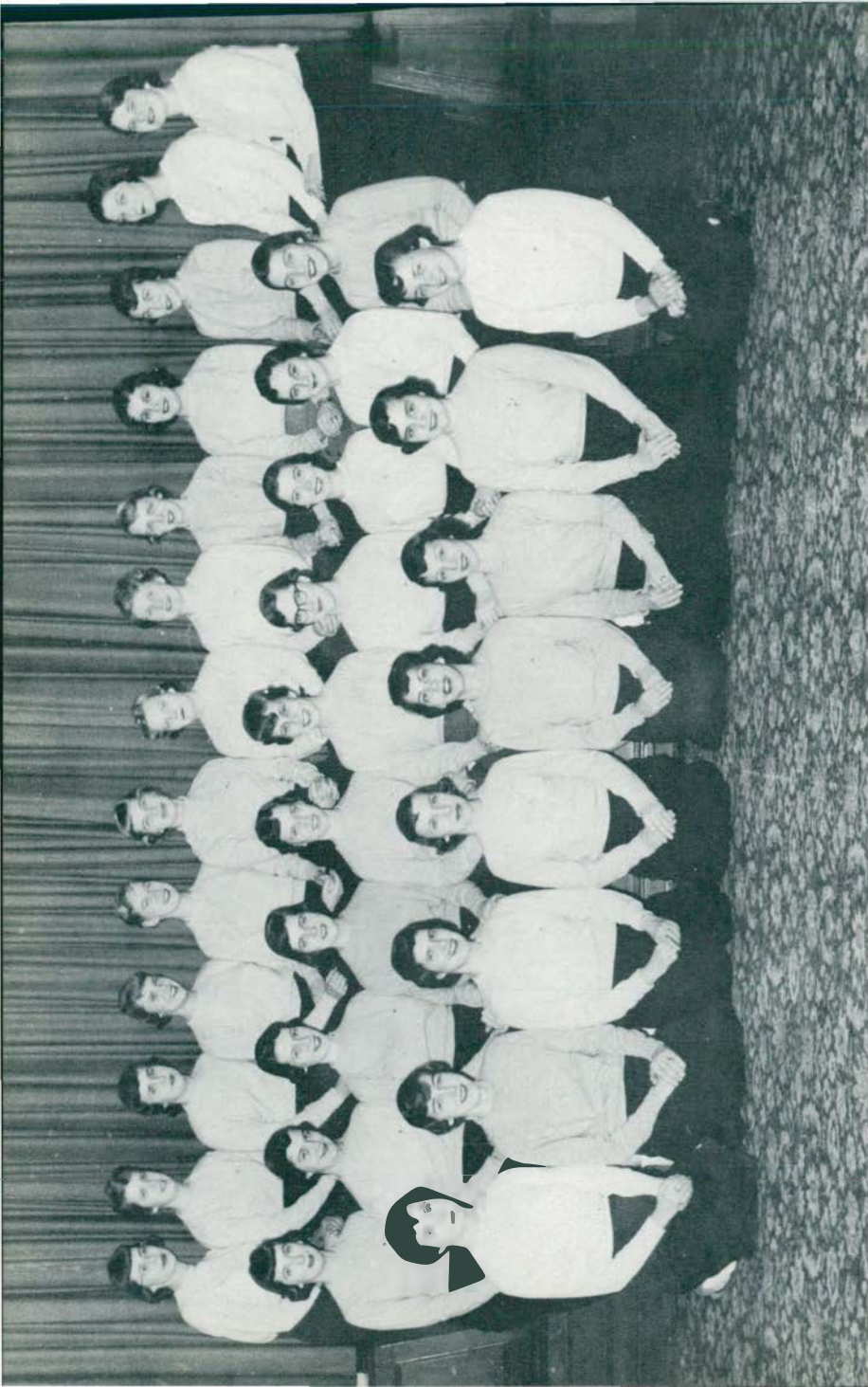


The second semester found us getting ready for spring rushing and our annual Parent's Day Tea, to be held in April. May turned out to be our busiest month as we made

plans for our annual Candlelight Ball and a week-end at Wampler's Lake. The Ball was held at Mc Kenny Hall with a dinner preceding.

During the year we brought into our chapter two new patronesses, Mrs. Thomas Monahan and Mrs. Wilbur Williams.





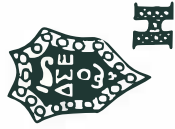
Row 1: H. Reid, M. Kent, J. Raabe, C. Thompson, B. Poole, J. Schlachter, C. Brougham, S. Fetters.

Row 2: N. O'Farrell, D. Johnson, E. Higgins, M. Kilpatrick (Corres. Sec.); D.L. Van Lente (Pres.); C. Callis (Vice Pres.); T. Mott (Treas.); M.L. O'Donnell

(Rec. Sec.); A. Castellucci, S. Mc Pherson. Row 3: B. Wade, J. Gutenschwager, J. Dennison, P. Sullivan, B. Loush, P. Neuman, P. Fisher, J. Kehrer, J. Helm, J. Tarpinian, J. Fraser, M. Govaere, C. Leon.

## Delta Sigma Epsilon

She may be just a wee girl. Sometimes she's rather tall.  
 She may be the very life of the Ball.  
 And then again, sometimes you may hardly know she's  
     there at all.  
 Perhaps her hair is waved; never a strand out of place . . .  
 Maybe her hair is tossed . . . . . or straight.  
 One thing for sure, though; There's a smile on her face.  
 And you'll know her when you see her by her charm, her wit,  
     and her grace.  
 And, oh yes, one other thing . . . . .  
 She'll be your friend through thick and thin;  
 For you see, she wears a DELTA SIG pin.



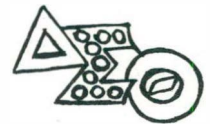




Row 1: J. Moore, D. Trotter, E. Allon, V. Covington, O. Gibbs, B. Creech, B. Gordon.  
 Row 2: G. Trotter (Treas.); N. Green (Corres. Sec.); V. Rutherford (Vice Pres.); Miss N. Anderson, Advisor; T. Covington (Pres.); J. McIntosh (Sec.);

B. Johnson.  
 Row 3: E. Sharkey, M. Davidson, J. Jenkins, A. Williams, L. Cade, E. Butler, E. Vinsang, R. Wilson, V. Williams.

## Delta Sigma Theta



Delta Sigma Theta opened the year with a successful play day in the Alumni Lounge. The next big event was the annual Crimson and Cream Ball; afterward came work on the Homecoming float, the open house and ribbon pledging. "Help Week" was terminated with a dinner party at the Carlton-Plaza in Detroit. Then there was the Christmas Sing for which we composed our own song entitled "Snowbells."

During the month of January, we celebrated our National Founder's Day with a luncheon and by attending church together. We welcomed a new chapter into our sisterhood and also celebrated the founding of our new National Headquarters in Washington, D.C. We are now looking forward to our Regional Convention in New York this August.





Row 1: M. Lindsay, J. Blashill, J. Roeser, J. Hoover, J. Brockman, S. Dickerson, R. King, B. Kiessel, D. Potter.  
 Row 2: B. Ladd, M. Fritz, M. Madigan (Vice Pres.); M. Lloyd (Treas.); Mrs. Nist, Sponsor; L. Whyte (Pres.); H. Cate (Rec. Sec.); J. Wright (Corres.

Sec.); M. Stamy, S. O'Fiaro.  
 Row 3: V. Mac Donald, P. Mc Givern, P. Hobbs, L. Clements, N. Greenhoe, R. Opland, M. Hartland, B. Mulvany, A. Ross, D. Thompson, W. Dooley, A. Hiller.

## Kappa Mu Delta



Kappa Mu Delta began its yearly activities by winning third prize in the annual Homecoming parade. Following the parade, an open house was held at the home of Mrs. Harvey Colburn, a member of the alumnae chapter of Ypsilanti.

The members enjoyed a wiener roast in the month of October, held at the home of Ann Ross.

The Kappa Mu's began their Christmas cheer by helping out a needy family. A Christmas party, given in honor of the alums, was held at

the home of Mrs. Nist, sponsor of Kappa Mu.

The month of February brought about a winter skating party and a theatre party. The early morning breakfasts in the Union every Saturday were a lot of fun.

Our annual spring dance was a big success in April, but the busiest month of all was May. Among the many activities were the May Brunch, given by our alumnae in Detroit, the Mother's Day Luncheon, and the week-end at the lake. A wonderful time was had by all who attended these activities.

Climaxing the yearly activities, the Kappa Mu's held a picnic for their families.





Row 1: P. Hoy, S. Friedly, B. Signor, J. Knopp, E. Kettenstock, M. J. Scrivens.  
 Row 2: Mrs. C. Anderson, Patroness; M. Hordin (Vice

Pres.); J. Kaiser (Pres.); Mrs. S. Wilson, Advisor; J. Warrington (Sec.); P. Van Orden (Treas.); Mrs. S. Copps, Patroness.

## Pi Kappa Sigma

Another happy-go-lucky year has rolled around for the Pi Kaps. The social season was begun with an All-College Square Dance which was put over by a professional caller. At Homecoming there was the annual float to be built, besides the open house for the alumni. Many of the alumni of Alpha chapter visited us, and also many members of other chapters who now live in this area.

Amongst the wiener roasts and other outings of November, our Founder's Day Dinner was held. Two of our original founders were present at the dinner, besides one of our national vice-presidents.

The Ypsilanti Alumni Chapter once again



was very active in the social affairs. In addition to playing an important part in the Founder's Day celebration, the alumni chapter was host to the active Pi Kaps at a Christmas party.

While the wintry blasts were still blowing, a toboggan party was held. Shortly after, there was the Pledge Party. Mrs. Stuart Wilson, our advisor was helpful in getting activities for May in action. The big week-end at Wampler's Lake and Mother's Day program were two important functions of the month.





Row 1: H. Mauganis, R. Batalucca, J. Durant, L. Salles, M. Nelson, B. Zoch, D. Balaskas, F. Kokinakes, P. Mierau.  
 Row 2: G. Baldwin, M. Rank, M. De Voe, J. Duberville (Treas.); D. Bean, B. Mix (Pres.); Dr. M. Potter, Advisor; M. Van Patten (Vice Pres.); P. Aber-

nathy (Corres. Sec.); S. Teske, S. Hendges (Rec. Sec.); J. Kokinakes, A. Archer.  
 Row 3: A. Truesdale, K. Trepp, J. Davidson, A. Lepak, D. Bogetta, M. Babbitt, L. McKay, C. Rikley, P. Hathaway; M. Filsinger, B. Moyer, A. Fruin, B. Wallace.

## Sigma Nu Phi



September, 1953, found the Sigma Nu's back, ready and willing to carry out plans for an eventful year under the leadership of Bobbie Mix. This year's Homecoming was filled with much pride and success for us.

Gloria Baldwin, one of our recent members, was crowned Homecoming Queen to reign over the entire week-end. We placed second in the sorority division for our float, "We've Got Southern Fried". In December, we once again gave a helping hand to a needy family of Ypsilanti, by

supplying them with a basket of food and small gifts.

Our next big job was the annual Sweetheart Ball. The theme this year was Sapphire Serenity. Muriel Van Patten acted as general chairman. Lois McKay was appointed our Culture chairman, to be in charge of tickets to the Art Center Theater plays in Ann Arbor, all made possible by the Alumni groups of Sigma Nu Phi.

March, a successful month, included our Style Show. We received the cooperation from all the sororities on campus. The year was climaxed with a delightful, fun-filled, Senior week-end.





Row 1: N. Calhoun, A. Dawson, L. Adams, J. Fails, B. Borka, S. Shuler, S. Leathers, B. Conaughty, J. Jensen.  
 Row 2: B. Sagamang, V. Mc Enany, V. Jersey, J. Macadaeg (Rec. Sec.); B. Carroll (Vice Pres.); D.

Weisel (Pres.); J. Irons (Treas.); B. Taylor (Corres. Sec.); P. Mc Quade, N. Pond.  
 Row 3: G. Schlabit, M. Mac Donald, C. Johnson, M. E. Beal, A. Brant, B. Logie, B. Brown, J. Hines, N. Hall, D. Obuchowski, J. Tragge, S. Lambert.

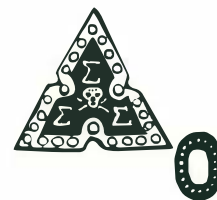
## Sigma Sigma Sigma

S—Scholarship, I—Initiative, G—greatest, M—maturity, A—ambitious.

What is a Tri-Sigma? The girl who starts college as a starry-eyed freshman, marked from the start for Sigma Sigma Sigma. Now as a Sigma, she goes through the last three years with the sophistic flair of the 14th year of school; then a dash of twenty-one—joviality and vitality supreme—then a junior; power of M.S.N.C. at her fingertips, next a bit of charm and sophistication—our senior.

We want it known that we don't wear minks—only cashmeres. Up to the latest styles? Oh yes! the knee-socks, we wear 'em. Purple Cadillacs?—We got 'em. Florida tan? Always! Parties? We're always there.

Are we proud we're Sigmas? You bet!





Row 1: M. Schickler, N. Prater, M. A. Flagg, B. Tarr, A. Stan, B. Waldorf, B. Poch, A. Strohl, O. Koss.  
 Row 2: R. Alcini, D. Nicholas, M. Many (Corres. Sec.); C. Mac Donald (Rec. Sec.); B. Baer (Vice Pres.); Mrs. M. Hughes, Advisor; J. Juracek (Pres.); M.

Pell (Treas.); A. Noblet, D. McMann, J. Stamos.  
 Row 3: J. Valaika, M. Fisher, S. Renton, E. Andre, S. Husted, I. Olah, J. Warth, J. Mc Haney, B. Billeter, M. Gibbs, B. Shelly, M. McMann, M. Liston.

## Theta Lambda Sigma



'Tis a long long time from May to September, and the autumn month found the Theta Lams returned from summer vacation and anxious to begin activities for the year. The season began with a sorority wiener roast in the Hollow, and

the first big project was the Homecoming float. After the game, the Thetas greeted alumni at their annual cider sip at McKenny Hall.

The annual formal dinner dance was held on December 6, honoring the new members, and

formal initiation was on January 9.

The first activity of the spring semester was an All-College Dance, followed by Dad's Day, where the Thetas entertained their fathers. A luncheon and formal initiation for new members was held in the spring, preceded by the yearly breakfast honoring the graduating seniors. The first official activity in which the new members participated was the annual Mother's Day luncheon.

The Thetas enjoyed a fun packed week-end at a cottage on a lake and they closed their 1953-54 activities with the Memorial Day Tea, held in honor of the graduating seniors, by one of their patronesses.





Row 1: M. Karageanes, R. Dempsey, F. Paone, P. Dunn, J. Ferro, V. Townsend.  
 Row 2: E. Watkins, D. Navarre, B. Albert, Dr. Anderson, Dr. Virtue, Dr. Lotz, C. Lamberson, V. Elie, E.

Monroe, J. DiCommandrea.  
 Row 3: G. Bard, R. Fay, R. Kennedy, R. Dehnke, D. Barkus, G. Smith, C. Locus, J. Bozymowski, D. Adams, M. Hesselgrave, T. Fagan.

## Alpha Gamma Upsilon



Since its organization on the Michigan State Normal College campus in 1948, Iota Chapter has been progressing steadily. With the acquisition of a fraternity house, in 1952, and the winning of the National Alumni Cup, Iota Chapter is marked as the most active and most improved Chapters in our national fraternity.

Our social activities consisted of a semi-formal fall dance, "The Queen's Dream", where some 100 couples danced to the tunes of Grant Smith and his bard; a skating party which was well attended by guests and alumni; and our all college "Spring Costume Dance", which was

enjoyed by all who attended.

Our National Convention and our Easter Party for the students of Rackham School were other highlights of the past year.

The officers for the fall and spring semesters respectively were: President, F. Paone and D. Dempsey; Vice-President, I. Watkins and R. Dehnke; Treasurer, D. Helm; Recording Secretary, D. Dempsey and J. McDermid; Corresponding Secretary, G. Bard and E. Monroe; Sgt. at Arms, C. Lamberson and R. Kennedy; Pledge-Master, V. Elie and C. Bard; and House Manager, Mitch Karageanes.



Row 1: B. Zimo, G. Ingle, R. Peterson, D. Tarbutton, F. Appleyard, H. Price.  
 Row 2: G. Kaselemis, L. Haas, T. Geboski, Mr. Slay, B. Dueweke, J. Mank, D. Moseley.

Row 3: J. Ellis, B. Lewelling, H. Batalucco, G. Grisdale, J. Castleman, H. Kirschke, T. Laurain.

## Arm of Honor

The Arm of Honor, the oldest fraternity on campus, was founded on January 5, 1895. The men of the Arm are those of a very close-knit organization.

A great deal of success was had at the annual "Ball of Honor", given on January 9, 1954. Over one hundred couples attended this annual affair.

The acquisition of a new fraternity house, located at 510 College Place, appears to be the highlight of the year for the Hammerheads.

The fall officers were as follows: Jim Johnston, Lord High; Vaskin Badalow, Commander; Marv Staplin, Vice-Commander; Hal Batalucco, Scribe; and Bob Dueweke, Treasurer. The spring officers are: Bob Dueweke, Lord High; Ted Geboski, Commander; John Mank, Vice-Commander; Lou Haas, Scribe; Ralph Peterson, Treasurer.







Row 1: K. Cross, B. Goul, J. Gutenschwoger, J. Osler, W. Colboth, D. Babcock, B. Bird.  
Row 2: B. Medley, J. Zickle, R. Wilgus, B. Phenix, Dr. Kelly, R. Harter, J. Zizzi, F. Cerneant.

Row 3: D. Koza, R. Stepanian, C. Evangelenus, R. Linkletter, B. McCulloch, B. Drest, P. Dulong, D. Carkee, B. Perry.

## Delta Sigma Phi

Well—here we are again! Another year has passed and Uncle Sam has again called the best looking men away and this is what's left.

In spite of this we were able to muster enough men to build a third place homecoming float. We were guests of the University of Detroit Chapter at their annual Carnation Ball.

The officers for the year are, President, Bill Phenix; Vice President, Ray Harter; Secretary, Rick Wilgus; Treasurer, Joe Zizzi; Sergeant at Arms, Fred Cerneant; Chaplain, Dick Carkee; Social Chairman, Bill Medley; Athletic Chairman, Jim Zickel; Pledgemaster, Don Babcock.

The following men were pledged during the fall semester: Bob Linkletter, Bob Gould, Woody Colbath, and Chris Evangelides.





Row 1: R. Woodward, J. Shadoan, R. Wischer, D. Dunham, R. Oestrike, J. Whelan, D. Kleinsmith, K. Seng.  
 Row 2: R. Boyd, D. Wenzel, P. Temple, L. Tower, R.

Chapelle, R. Peak, B. Thornley.  
 Row 3: E. Alymer, R. Illi, T. Reiser, L. Cochran, T. Peebles, R. Henderson, R. Kukovich, R. Pogliano, M. Bluhm, H. Minor, D. Vibert.

## Kappa Phi Alpha



With many of the actives living in the recently acquired fraternity house, Kappa Phi Alpha enjoyed another year of progress in 1953-54. Mr. William J. Brownrigg proved very capable during his second year as patron.

Highlights of the year were the annual Red Rose Ball in December, the Spring Banquet, and the Memorial Day Picnic. In the line of sports, the Kappas ran up a record total of 197 points to take the intramural sports trophy for the 1952-53 year.

Pledges initiated in the fall semester were Lloyd Cochran, Don Kleinsmith, Bill Thornley, John Whelan, and Bob Woodward.

Officers for the year were: Alpha, Lyman Tower; Beta, Bob Chapelle; Gamma, Paul Temple; Delta, Ray Peake; Corresponding Gamma, Dave Wenzel; Athletic Mgr., Dale Schaffer; Historian, Tom Cladwell; Publicity Chairman. Ken Seng; and I.F.C. Rep., Bob Chapelle and Vaughn Filsinger.





Row 1: C. Dixon, R. Conley, F. Adams.  
Row 2: C. Gilliam, S. Collins, W. Strong.

## Omega Psi Phi

Although small in number, the Omegas are not small in spirit. The fall semester began with a celebration of Founder's Day on November 17th. The speaker for the program was Abraham Ulmer.

Along with national, Normal's chapter of Omega Psi Phi sponsored a high school essay contest; first prize in this contest was \$500. The Omegas also sponsored an all campus forum on "Social and Psychological Problems of Today".

The officers for 1953-54 were: Sylvester Collins, President; Webster Kirksey, Vice President; Cleon Gillium, Secretary; and Warner Strong, Treasurer.





Row 1: W. Asato, J. Palazzolo, R. Bridge, R. Bochenek, J. Birnbaum, J. Garcia, R. Thielen, F. Marx, L. McDonald.  
 Row 2: R. Wyer, H. Miller, H. O'Donnell, M. Carr, W. Arbaugh, H. Manterian, Butler, C. Steinle, L.

Faulman, H. Seals, B. Dank.  
 Row 3: L. Henderson, F. Higgins, J. Haywood, T. Nutt, R. Tillman, E. Kuca, J. Mackey, J. Taylor, J. Sventko, D. Wendling, J. Myers.

## Phi Delta Pi



The Phi Delta Pi again had a successful year, except for the untimely death of its patron, Mr. Orlo M. Gill, shortly before Thanksgiving. George Mantarian was elected as patron to fill this honored position.

The fall dance, "Autumn Leaves", was attended by many and proved to be a huge success. Seven men from the fraternity were on

the Men's Union Executive Board, and many others participated in varsity and intramural athletics.

The annual Washingtonian dinner dance was held on February 20, and was attended by many alumni.

Officers for spring, 1954, were Harold O'Donnell, President, Harold Seals, Vice-President, Walter Asato, Recording Secretary, Robert Dank, Corresponding Secretary, Gerald Myers, Treasurer, and Tom Nutt, Pledgemaster.





Row 1: B. Emigh, B. Rowland, J. Hurbis, K. Jacobsen, T. Bradley, B. Bartley, D. Kain.  
 Row 2: B. Weiss, C. Malcomb, G. Davis, B. Middlekauff, Mr. Falahee, J. Potter, D. Walker, D. Flynn, Mr. MacDonald, D. Laing.

Row 3: R. Hill, C. Hatch, B. Williams, C. Boylan, N. Manych, W. Smith, C. Schirhart, A. Oakes, D. Vanek, P. Latham, D. Brown, R. Tamppari, P. Temerian.

## Phi Sigma Epsilon

Lambda chapter of Phi Sigma Epsilon is bringing to a close the twentieth year of activity on the M.S.N.C. campus.

Home of the Phi Sigs is the fraternity house at 601 W. Cross, just across from the Heath Residence, where we have lived for the past three years. To add to the comfort of the house, we added a new water heater in the basement and a paint job to the kitchen and living room.

Signs of a fine year athletically were indicated early in the fall semester as the exciting inter-fraternity football season saw the Phi Sigs win the championship.

The pledge classes saw a host of fine men come into the fraternity, take their places as new members and carry on the traditions of the fraternity.

Social functions were far from neglected in the fraternity year. Phi Sigs from three states

met at Genesee, New York, and Mt. Pleasant, Michigan, for the fall and spring regional conclaves.

The Phi Sigs joined forces with the Tri Sigs, our sister sorority, for the Phi-Sig-Tri-Sig dance

which was a big success.

At the annual Spring Dinner Dance, many alums and actives met once again for the crowning event of the Sig's social season.

The leaders of the fraternity this year were Doug Walker, President, Dale Flynn, Vice-President, Jim Potter, Treasurer, Bob Middlekauff, Recording Secretary, Ray Tamppari, Corresponding Secretary. We were ably guided by three fine advisors, Mr. Hilton Falahee, Mr. William Wilcox, and Mr. Alister MacDonald.





Row 1: M. Bald, K. Geyer, P. Lumetta, D. Muir.  
 Row 2: Mr. W. Moore, G. York, D. Sevey, D. Boye, R. Davis, W. Wodtke.

Row 3: D. Rincky, B. Buck, J. Eberle, J. English, D. Donigan.

## Sigma Alpha Delta



The Sig Delts have once again completed a successful season on Normal's campus. This year's highlights included: a wiener roast in the hollow at the beginning of the semester, presenting the Homecoming trophy to the queen, trips to Big Rapids and Kalamazoo for conclaves, winning the scholarship trophy, weekend parties and pledging.

The fall term's pledging saw five men successfully complete eight weeks of work and fun before finally attaining status as true Sig Delt men.





Row 1: B. Gordan, J. Baunoch, B. Brinkman, J. Kelly, B. Hafer, R. Diaz, F. Teodecki, L. Davis, D. Herrmann.  
 Row 2: B. Babcock, T. Davis (Sec.); C. Ericson, M. Sole (Pres.); Mr. Goings, P. Hawarny (Vice Pres.);

Mr. DeLong, G. Garlick (Treas.).  
 Row 3: D. Wood, W. Young, L. Mawby, E. Steinhart, D. Wendt, C. Wiseman, B. Weymouth, D. Helm-kamp, H. Carson, B. St. Germaine, J. Nicita.

## Sigma Tau Gamma

The White Rose Ball, the sweetheart serenade, and the alumni banquet are a few of the things that have caused the Sigma Tau Gamma fraternity to become a very necessary part of M.S.-N.C.



In the fall, the Sig Taus held their annual alumni banquet which, each year, attracts actives and alumni from all over the country to form the largest group of Sig Taus that ever gather in this area. Along with the alumni banquet, which is a great contribution to Normal's homecoming celebration, the Sig Taus consistently win acclaim for their fine floats in the homecoming parade.

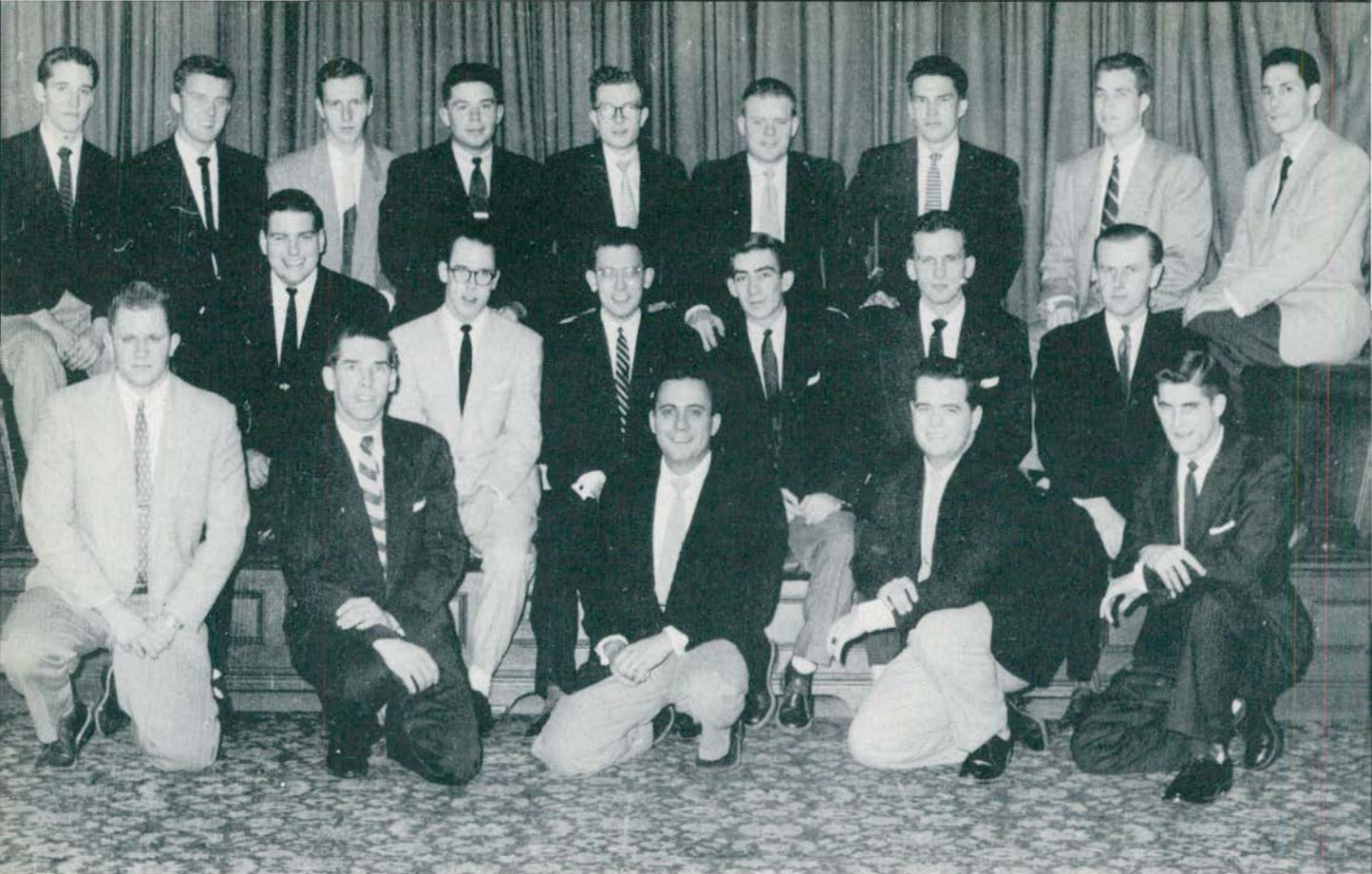
The White Rose Ball is the highlight of the

spring semester for the Sig Taus. The dance is open to all Greeks and is always well attended.

The Sig Taus are well known as a singing fraternity. Whenever and wherever the members gather they sing their song, The White Rose. Also, the serenade is sung to each girl who receives a pin from a member of the fraternity. In past years, this serenade has often been heard on our campus and it, more than anything else, has caused the Sigma Tau Gamma fraternity to become a tradition at M.S.N.C.

The feeling of brotherhood is the thing that makes Sigma Tau Gamma such a fine organization. This attitude of brotherhood is prevalent throughout the fraternity, among all members, as well as the advisors and the sponsor. The Sig Taus are a successful group. Every man in the fraternity is responsible for the success of the group.





Row 1: J. Becker, R. Saunders, D. Russell, O. Hunter, N. Basile.  
 Row 2: K. Thompson, S. Bartlet (Treas.); Harry Burzyck (Sec.); L. Blum (Pres.); B. Griner (Vice Pres.);

Mr. McArthur, Advisor.  
 Row 3: D. Robb, J. Collins, T. Smith, J. Manley, C. McManigal, H. Rohr, L. Walsh, G. Menzi, M. Bousamra.

## Zeta Chi Sigma



"A quarter of a century of progress" was the theme of the Zeta Chi's twenty-fifth anniversary, celebrated December 5th. "Doc" Loesell, who has served with the fraternity for 18 years, was the guest of honor, and inspiring speeches were made by "Doc", Bingo Brown, and Harold Koch, our alumni President.

This year has been another year of progress, and great improvements have been made in the fraternity house at 603 West Cross Street. Among these improvements were modernized rooms and suites, carpeted halls and stairways, more furniture and numerous other additions.

Some of our activities this year were open-houses and house parties, Homecoming activi-

ties, participation in intramural athletics, a wonderful Halloween party, (not to mention the one at New Year's), and an all college Friday-the-thirteenth dance.

Many Saturday nights found the Zetes and their dates in the beautiful dance and recreation rooms in the basement of the fraternity house. These candle light house parties have always been a great success.

This year the Zeta Chis and the Sigma Nus got together to sing for the annual Christmas sing, and the combined group sang their way to fame.

The traditional Zeta Chi Cruise will always be remembered as the high spot of the year, and this year, like every year, the cruise was a big success.

Our present advisors are Mr. McArthur and Mr. Rollings.





Row 1: A. Blunt, B. Zander, W. Foster, R. G. Smith, B. Woodworth, F. Boker.  
Row 2: J. Manley, K. Cook, C. Bergman, J. Walsh, G. Jackson, W. Fitch, C. McManigal.  
Row 3: J. Moransee, H. Wilson, P. Boldridge, T. Smith, N. Logon, E. Stratelak, R. Stallard,  
W. Parr.

## Phi Mu Alpha Sinfonia

Phi Mu Alpha Sinfonia, National Professional Music Fraternity, is composed of students active in musical organizations on campus. All musical functions and programs find this group well represented.

During the past year, Michigan State Normal College's Delta Xi chapter was host to seven other chapters at the bi-annual province convention held on this campus.

Our activities for the year included an annual All-American Concert in the spring and a concert tour to high schools in the southeastern part of the state.

Our faculty advisor was the very reliable Dr. William D. Fitch.



Row 1: T. Mott, J. DiBiaggio.  
Row 2: Dr. Nist, Mr. Fleischauer (MSC), W. Shaw, S. Ude (MSC).

## Lambda Iota Tau

Delta chapter of Lambda Iota Tau, honorary fraternity for students of literature in English and foreign languages, was installed at M.S.N.C., February 17, 1954. The fraternity was founded at Michigan State College in December, 1953, with the aim of providing recognition for outstanding students of literature. A meeting held at East Lansing March 6, incorporated Lambda Iota Tau as the only existing national literary honorary fraternity.

Delta chapter began successfully and initiated members three times during the spring semester. Much of the success of this new honorary is the result of the planning and cooperation of Dr. John Nist, faculty moderator. If a good beginning leads to continued excellence, as the saying goes, Lambda Iota Tau will prosper at M.S.N.C.





Row 1: L. Butler, R. Hawkins, L. Lemon, P. Hubbell, E. Breyfogle, R. Towns.

## Pi Gamma Mu

Pi Gamma Mu, the national Honorary Social Science Society, is represented on this campus by the Alpha chapter. Its purpose is to improve scholarship in the social studies, and to inspire social service to humanity by an intelligent approach to the solution of problems.

The year 1953-1954 kept members busy as they saw movies, listened to speakers, and entered into discussions on the problems of our society.

The year's activities were directed by Dr. Paul Hubbell, sponsor. During the fall semester Robert Towns acted as President; Richard Oltmann, Vice-President; and Jane Knapp, Secretary-Treasurer. For the spring semester the officers were: Robert Hawkins, President; Evangeline Breyfogle, Vice-President; and Lamora Lemon, Secretary-Treasurer.



Row 1: B. Mays, D. Benton, N. Davis, J. Kelly.  
Row 2: D. Julien, K. Jacobsen, C. Callis, F. Norton.

## Pi Kappa Delta

An interesting, enlightening part of Normal's extra-curricular activities is the forensic program, headed by Mr. Grant Wessel of the Speech Department. Through these activities, membership into the largest national speech fraternity, Pi Kappa Delta, is achieved.

Pi Kap's first event of the year was the initiation of Mr. Wessel into the fraternity. Since that time the resignation of Dr. Joseph Kelly has been accepted and Mr. Wessel has become the new advisor. Much appreciation goes to Dr. Kelly, whose efforts have furthered Pi Kappa Delta during the past three years.

This small group has met frequently during the year for coffee hours, where plans were completed for the Alumni Banquet, which was held on May 1. At this time neophytes who qualified through debate, the Peace Oratory Contest, the Extempore Speaking Contest, and/or the M.I.S.L. Oratory Contest were presented to the fraternity.

Pi Kappa Delta has had a successful year and much thanks goes to the efforts of the officers and Mr. Wessel, who as a new instructor in the department realized the importance of the Forensic Fraternity and has helped to make it the culmination activity for the speech program.





Row 1: K. Hill, N. Anderson, O. Genn, V. North, T. Nutt.  
Row 2: D. Schwartz, J. Behnke, M. Samuel.

## Pi Omega Pi

Pi Omega Pi is the national honorary organization for Business Education students with a high scholastic standing.

In addition to their regular meetings, the group cooperated with the Business Club to begin its activities with the annual fall picnic in the hollow.

The officers for the year were: Oliver Genn, President; Donna Schwartz, Vice-President; Maureen Samuel, Secretary-Treasurer; and Jean Behnke, Historian. The faculty advisor was Miss Normajean Anderson.

Arrangements for the Annual Alumni Homecoming Banquet, which was held at McKenny Hall, were made by Pi Omega Pi.

Pi Omega Pi made the programs for the All-College Christmas Party.

Pi Omega Pi cooperated with the Business Club for the annual spring picnic held in May. Our last activity was the annual Senior Honors Banquet.



Row 1: B. May, A. LeDuc, D. Roberts, S. Shuler, N. Greenhoe, L. Ostrander, E. Bakhous, P. Meadows, C. Kehrer.  
 Row 2: B. Woodworth, E. Breyfogle, N. Morin, R. Miller, M. Anderson, M. Robinson, M. Bayle, A. Ensign, J. Collins.  
 Row 3: J. Chiravola, E. Meeks, J. Worthington, A. Ross, C. Evans, N. Calhoun, S. Friedly, P. Neuman, M. E. Jordan, M. Gleason, I. Brady.

## Stoic Society

The Stoic Society is an honor society which elects its new members from the members of the sophomore class who have attained a high scholastic average during their freshman year. This year twenty-two new members were elected into the society, and were honored at an informal reception on **January 13**.

The highlight of the year was the annual banquet which was held on March 19, at which time the new members were given their Stoic pins and became full-fledged members of the organization.

Other events throughout the year were the Christmas party, the White Elephant Sale, and the May Morning Breakfast, at which the officers for the following year were announced.

The officers for the past year were Marilyn Anderson, President; Susan Boyer, Vice-President; Nancy Morin, Recording Secretary; Mary Bayle, Corresponding Secretary; Richard Miller, Treasurer; Evangeline Breyfogle, Reporter.





Row 1: B. Bammel, S. Hills, E. Zoeplitz, I. Brady, J. Hansen.

Row 2: A. Ross, J. Kehrer, C. Evans, B. Baldwin, M. Gleason, J. Kavie, L. A. Innes

## Mu Phi Epsilon

Epsilon Lambda chapter of Mu Phi Epsilon, National Music Sorority, was installed in April, 1950. The purpose of Mu Phi Epsilon is "The recognition of scholarship and musicianship, and the promotion of friendship within its sisterhood."

Some of the activities of the past year included: the 50th anniversary of Mu Phi Epsilon; a Founder's Day Tea and Musicale; a trip to the opera; a Christmas carol sing; the Mu Phi-Phi Mu formal dance of January 9; and a spring concert given in April.

The officers for the past year were: Isabel Brady, President; Joanne Hansen, Vice-President; Shirleyann Hillis, Treasurer; Sally Donegan, Recording Secretary; Evelyn Zoeplitz, Corresponding Secretary; Elizabeth Evans, Alumni Secretary; Betty Brawner, Historian; Lillian Moore, Warden; Ann Ross, Chaplain; and Faythe Miller, magazine chairman.

# *Organizations*

Student Government  
Clubs  
Publication Staffs







Row 1: J. Osler, B. Foley, J. Burzyck, B. Costiglione, G. Bord, C. Leon.  
Row 2: M. Fritz, M. Bobbit, Deon Isbell, D. Flynn, J. DiBiaggio, M. Shank, S. Collins,  
W. Colboth.  
Row 3: J. Crowfrod, F. Forsythe, E. Monroe, M. Mony, J. Hayes, R. Linkletter, J. Collins, K.  
Slick, J. Koiser.

## Student Council



Row 1: J. Boker, B. Foy, A. Ston, J. Zickel, Deon Isbell.

## Student Court





Row 1: B. Carroll, J. Juracek, J. Dennison, A. Strohl, M. DeVoe.  
Row 2: B. Waters, B. Loush, R. Rabe, B. Peterson.

## Women's League Advisory Board



Row 1: L. Faulmann, T. Nutt, T. Caldwell, R. Miller, F. Lamiman, J. DiComandrea.  
Row 2: J. Mackey, J. Birnbaum, D. Ruyle, B. Rowland, P. Hawarny, R. Harter.

## Men's Union





Row 1: Dean Hill, J. Warth, C. Callis, J. Dennison, B. Ladd, Miss H. Rudin.  
 Row 2: M. Donnelly, N. Prater, P. Neuman, P. Fisher, B. Sagamang, A. Devendorf, A. LeDuc, J. Chiravola, A. Hemingway.

Row 3: N. Ford, S. Whitney, M. Bonadio, D. Ernst, J. Davidson, J. Durant, L. Thomas, B. Baer.  
 Row 4: J. Worthington, P. Mierau, S. Hendges, F. Kokinakes, E. Breyfogle, J. Warren, B. Moyer, M. Hartland.

## Women's League Executive Board

The executive board of the women's league not only regulates policies governing the activities of all women students, but also investigates the needs of the students and initiates services to fill those needs. Some of these services are: community service which helps place girls in laboratory assignments for classes, music and drama services, which purchase tickets for events in Ann Arbor and Detroit at a reduced cost and sells them to the women, and a picture service which rents prints of famous paintings to the campus girls

Many activities, new and old, were presented to the campus by the executive board this year.

The traditional green ribbon ceremony, the buzz session, the assemblies, the successful girl bid dances, "Manhattan Moonlight" and the informal frolic in the spring, the leadership clinic held at Mill Lake Camp, the all-campus picnic and the senior breakfast, all lent the feeling of gaiety, work, friendship, leadership, and planning to the campus.

Thanks also goes to JoAnn Durant and Barbara Baer for the splendid work they did in directing the plans for the Michigan State Women's League Convention to which Michigan State Normal played host.



Row 1: B. Whelan, J. Birnbaum, C. Swan, W. Bird, B. Middlekauff, M. Gleason.

## Student Social Committee

The Homecoming Dance, Orientation Week, after game dances, free movies, skating parties, and mixers are just a few of the many activities that the All College Social Committee plans each year for the students of Michigan State Normal College.

This committee is very active and well-known on our campus, and to further help them they are pleased to have as their faculty advisor, Dr. Adelyn Hollis.



# Dormitory Councils



Row 1: S. Leathers, J. Macadaeg, C. Evans, S. Husted, J. Tragge.  
 Row 2: N. Pond, Mrs. Nobles, R. Berger, Miss Coyne, P. Hebb, M. Stamy.  
 Row 3: C. Cocroft, M. Smith, M. MacDonald, C. Rikley, B. Tarr, V. Rutherford, M. Hartland, J. Armstrong.

Row 1: R. Rabe, Miss Jones, M. Anderson, J. Helm, M. Madigan, J. Kehrer, Miss Carson, S. Hedges.



Row 1: R. Francis, D. Gianelli, N. Green.  
 Row 2: Mrs. Whitney, P. Kroneck, M. L. Bonadio, C. Callis, M. Donnelly, Mrs. Trumbull.



Row 1: L. Butler, F. Colbath, R. Wilgus, F. Lamiman, J. Osler, E. Guido.  
 Row 2: D. Anding, R. Dinsmore, F. Yost, W. Spencer, G. Spencer.

Row 1: R. Fowler, B. Henderson, Mrs. Smith, D. VanWinkle, R. Diaz.  
 Row 2: B. Forbush, L. McDonald, W. Sobeski, R. Forth, R. Wasco.  
 Row 3: Mr. Green, R. Sheldon, N. Sobolewski, Mr. Manthe, S. Collins.





Row 1: J. Schlachter, N. Anderson, G. Melzow, B. Williams, L. Henderson, E. Skowneski, B. Mulvany, J. Lotz.  
Row 2: S. Bartlett, T. Geboski, J. Worden, J. McLellan, G. Hartness, B. Bailey, M. Samuel, D. Olsen, I. Williamson, R. Peterson.

## Business Club

The Business Club began its fall activities with the annual fall picnic held in the hollow. Other social activities during the year included: a Christmas party held at Dr. Lotz's home; sponsorship of a card room for the All-College Christmas Party; a field trip to J. L. Hudson's, the Stock Exchange, and the Federal Reserve; a spring picnic, and the Annual Senior Banquet which was held in May.

Officers for the year were: Lee Henderson, President; Bill Williams, Vice-President; Ed Skownski, Secretary; Connie Agnew, Treasurer; and Barbara Bailey, Reporter.





Row 1: J. Galindo, B. Nichols, E. Rodriguez, N. Key.  
Row 2: D. Velasquez, H. Borja, M. Bayle, Mr. Villegas, A. Skentzos, R. Gersten, B. Parker.  
Row 3: N. Green, A .Ramirez, A. Rodriguez, B. Ellis, L. Borjas, C. Fronklin, R. Van den Branden.

## Centro de Espanol

The Spanish Club, which became reorganized in September, 1953, and adopted the name Centro de Espanol, promises a successful future in view of its past activities.

Concerned primarily with students studying Spanish, the club, under the guidance of Mr. Villegas, has taken a great step in improving the student's conversational ability as well as furthering their knowledge of Spanish customs.

Interesting discussions on the school systems of various Latin American countries were presented by natives of those nations, and slides on the geography and the occupations of South America were shown. Spanish games and music provided entertainment.

The president for the year was Angela Skentzos, and the vice-president was Molly Bayle. Richard Gersten served as secretary-treasurer, and Hugo Borja was social chairman.



Row 1: W. Nelson, C. Nunn, C. Hartje, E. Grindstaff, J. DiBiaggio, R. Cornwell, R. Dinsmore, R. Schellinger, J. Oney.  
Row 2: M. Schalge, Mr. Clark, Mr. Sellers, A. Schalge, W. Adams, B. May, D. Hartman, Mr. Brundage, Mr. Carr, Mr. Lamkin, T. Gormley.  
Row 3: J. Arnold, K. Wilkins, J. MacDermid, J. Shadoan, J. Lepak, R. Morris, E. Mathis, M. Wasserman, B. Woodell, S. Shiraishi.

## Chemistry Club

This year marked the 44th anniversary of the Chemistry Club which was founded in 1910. At the anniversary meeting in February, Dr. Don Francke, the head pharmacist at the University Hospital in Ann Arbor, spoke to the group. He was a former member of our club.

The officers for this year were Barbara May, President; Bill Thornly, Vice-President; Bill Adams, Secretary-Treasurer. The patron is Dr. Perry S. Brundage and the advisor is Dr. Melvin Carr.





Row 1: T. Alford, L. Miller, W. Mays, W. Parker, Mr. Wessel, D. Julien.  
Row 2: D. Larsen, D. Bucksar, F. Spence, M. Larson, R. Jensen, E. White, N. Drake.

## Debate Club

The Debate Squad participated in the M.I.S.L. Discussion and Novice Debate Tournament at Albion College in February of this year. Novice debaters were : Frank Marvin, Tom Alford, Dan Larson, Mary Larson, Lamar Miller, Nardi Nance, Dick Bucksar,, Nella Drake, Ruth Jensen, Jackie Jaulus, Bernice Graham.

Bill Mays and Bill Parker acted as student judges in co-operation with the bureau of school service. Normal debaters presented demonstration debates and discussions before ten high schools to an audience of one thousand students. Bert Greene represented Normal in Peace Oratory, speaking on the topic "A Program for Peace". Tom Alford represented the school in

Peace Extemporaneous Speeches and in the Men's Division of M.I.S.L. extemporaneous speeches.

Bill Mays also represented the school in the M.I.S.L. Extemporaneous and was also selected by Albion College to participate in a discussion of "Congressional Investigation and Government Loyalty".

Mary Larson won first place in the Peace Extemporaneous Contest held at Western Michigan College of Education.

Eight Normal students participated in the M.I.S.L. Debate Tournament held at Hope College on March 5.



Row 1: G. Zimmermann, V. Levely, J. Jelacsity, H. Montgomery.  
Row 2: R. Alcini, L. Gordon, J. DiBiaggio, J. Nist, T. Mott, B. Taylor.  
Row 3: J. Robinson, S. Hyder, S. Eggleston, L. Thibideau, M. Sherfey, D. Borwick.

## English Club

The English Club sponsored a variety of presentations during the school year 1953-1954. The first meeting was held on October 7 with a reading, "The Battle of Redding Jail", by Dr. John Nist. In a later meeting, Dr. Nist read the "Ruyat of Ohmar Khayyam." One of Maxwell Anderson's plays was read by a group of the members. The Christmas Tea for the English faculty and students proved to be a big success. Closely following was the year's most interesting meeting, that of the Christmas readings done by several of the English faculty.

The object of the English Club is to stimulate an outside interest in literature. Any English major or minor is invited to be a member.

Officers for the year were: John DiBiaggio, President; Thelma Mott, Vice-President; Lillian Gordon, Secretary-Treasurer and Dr. John Nist, advisor.





Row 1: Mr. DeVries, D. Donigan, R. Graham, H. Oltmanns, R. Oltmanns, Miss Warren.  
Row 2: J. English, J. Finkbeiner, D. Barkus, F. Swenson, F. Ambrose.

## History Club

The year 1953-54 has been an active one for the History Club. Its fall activities began with a picnic in the hollow. Later during the semester, Dr. and Mrs. Fagerstrom showed slides of their summer tour of the Scandinavian countries and northern Europe. The History Club also sponsored a movie at the annual Christmas party.

The spring semester began with the celebration of George Washington's birthday. Students showed their slides of different parts of the world they had visited. The year was brought to a conclusion by the annual May picnic.

The club had a successful year under the guidance of its advisors, Miss Warren and Dr. Fagerstrom. Its officers were: George R. York and Ron Graham, Presidents; Don H. Donigan, Secretary; and Helen E. Oltmanns, Treasurer.



Row 1: J. Speas, N. Hettinger, M.L. Lemmer, M. Smith, N. Bonitero, E. White.  
Row 2: B. Berarducci, Miss Burson, L. Grosshans, Miss Kelly, B. Storey, A. Devendorf, J. Steinbeck.  
Row 3: G. Robinson, Miss Myers, M. Mertens, Miss Faris, A. Height, M. Lilja, B. Hugill, E. Beach, H. Dudley, D. Olds.

## Home Economics Club

All girls taking courses in the Home Economics Department have the opportunity to participate in the many activities sponsored by the Home Economics Club. The club, which is affiliated with the American Home Economics Association and the Michigan Home Economics Association, began this year with a picnic to welcome the new girls. Other activities of the semester included making and selling of fruit cakes, making dresses for underprivileged children, and finally the annual Christmas Dinner at which parents of the members were honored guests. Activities for the second semester included a fun night, a field trip to the Home Economics Convention at Detroit, and a farewell picnic.

Club officers are Lynn Grosshans, President; Ann Devendorf, Secretary; Barbara Beraducci, Vice-President; Joyce Steinback, Treasurer; and Belva Storey, Reporter. Miss Kelly is the club sponsor and other faculty members are Miss Susan Burson, Miss Janet Myers, Miss Eula Underbrink, and Miss Christine Faris.





Row 1: L. Rivers, D. Russell, G. Walters, R. Pier, B. Mortin.  
Row 2: L. Cochran, R. Bender, J. Wescott, G. Willoughby, R. LoBounty, N. Risk, C. Hatch.  
Row 3: D.C. Johnson, M. Korogeones, W. Trepp, K. Thompson, C. Dolhstrom, D. Soule, J. Collins, R. Sounders.

## Industrial Arts Club

The Industrial Arts Club functions as a departmental organization under the sponsorship of Mr. Willoughby, head of the department, and with the cooperation of the departmental staff. It is open to all students majoring or minoring in industrial arts.

The chief purposes of the club are to develop good fellowship and understanding among the students and faculty, to undertake desirable projects, to attend group meetings emphasizing various activities and subjects in the industrial arts field.

The club cooperates in building a float for the alumni parade, building many toys in cooperation with the Ypsilanti Goodfellows, printing invitations for the college Christmas party, and promoting a get-together with alumni and others for a social evening and exchange of ideas.

The club members, as a group, become members of professional organizations at reduced rates and become familiar with the functioning of such groups so they can profit by their activities when they enter the teaching profession.



Row 1: B. Signor, L. Niemann, E. Lee, P. Van Orden, S. Shuler, J. Fails, J. Jackson.  
 Row 2: L. Adler, D. Barkus, Miss Robinson, C. LaBrew, J. Teston.

## Library Club

The year 1953-54 was an active year for the Library Club. It was a year of reorganization that saw the club opened to any student enrolled in one of the basic library science classes. The purpose of the organization is two-fold: to build professional attitudes and to provide social activities.

Monthly meetings were held followed by refreshments and visiting sessions. Among the "at home" activities of the club were a Christmas meeting with story telling and carol singing and a welcoming of alums who told of their experiences in their own libraries. The speakers at this last meeting were Helen Cansfield, who has the high school library in Van Dyke and Marion Zink, who has charge of two elementary libraries in East Detroit. The club members also

assisted at the materials conference, "Instruction in Action", held on our campus this fall, and on May 1, 1954, were hosts to over 700 high school library assistants at the annual meeting of the Student Librarian's Assistant's Association of Michigan.

The Library Club is also a traveling group. We have attended professional and book reviewing meetings of teachers and librarians at the University Elementary School in Ann Arbor and one meeting of the Michigan Association of School Librarians held at Battle Creek.

Officers are: Phyllis Van Orden, President; Sarah Shuler, Vice-President; Betty Lee, Secretary-Treasurer. The sponsor is Miss Margaret Robinson.





Row 1: A. Bengoechea, J. Coe, D. Boye, H. Borja, R. Hotchkiss, J. Nicita, R. Miller, B. Keller.  
Row 2: M. Reske, Mr. Goings, Mr. Pate, T. Gormley, W. Beal, W. Parker, Mrs. Neville, Mr. Erikson, N. Drake.  
Row 3: J. Sterlow, M. Samuel, S. Wright, A. Estrella, S. Lambert, M. Wasserman, C. Fantow, L. Norton, D. Helm, K. Slick, D. Tzoanwos, A. Landaez.

## Mathematics Club

The Mathematics Club offers fellowship and a wide variety of activities to all those who have a special interest in mathematics. It provides an opportunity for the students and the faculty to become better acquainted. This year's activities included a fall picnic, a panel discussion on student teaching, an interesting program on Astronomy, and a meeting on Probability.

The outstanding social event of the year was the annual Christmas party at Starkweather Hall. The feature of the evening was the presentation of "The 'Weak Before Christmas'" starring Cornelia Otis Neville, Peter Lorre Pate, Charles Boyer Erikson, Chico Marx Goings, and Gene Kelly Falahee.

Guiding the club through the year's activities were Wanda Beal, President; Eill Parker, Vice-President; and Theresa Gormley, Secretary-Treasurer. The officers were assisted by Mr. Hilton Falahee, faculty sponsor.



Row 1: M. Lemmer, B. MacDonald, A. Cade, J. Watson, I. Olah, S. Moore, N. Pitts.  
 Row 2: J. Schlacter, M. Oakes, S. Burris, D. Commings, B. Walker, E. Steup, F. Rowlette, M. White, J. Calpin.

Row 3: B. Sowers, E. Fetzer, J. Snow, J. Helm, Z. Bailey, J. Jackson, L. Sayre, Miss Morris.  
 Row 4: G. Peterson, G. Robinson, D. Hollifield, M. Melanson, D. Shorter, M. Patten, L. Cosey, L. Miller.

## Modern Dance Club

Modern Dance Club is an organization which is primarily a performing group made up of men and women on the campus. The officers are as follows: President, Anne Cade; Vice President, Joan Watson; W.R.A. representative, Irma Olah. It is sponsored by the Women's Recreation Association of the Physical Education Department, and our advisor is Miss Jeannine Morris.

The group has performed in many campus and off campus programs including half time ceremonies of a football game, a dance program for the B.Y.U. Club, a community organization, the annual Faculty Christmas Party, and the annual Christmas Dance Concert. Several members danced in the student musical, "Leave Her to Hell", and also danced for the Business and Professional Women's Club of Ypsilanti. The group culminated the Annual Spring Dance Concert of which part of the proceeds were donated to the Ruth Boughner Scholarship Fund.





Row 1: J. Hazelton, A. Husband, A. Nelson, M. Albright,  
N. Davis, R. Pier, W. Haas.  
Row 2: L. Miller, W. Kingsley, B. Borgen, N. Hewitt, L.

Bowman, B. Wilcox, Mr. Work, J. Dennison.  
Row 3: J. Baunoch, D. Cummings, W. Vasher, A. Ragan,  
J. Babcock, N. Burk, G. Peterson, R. Miller.

## M.S.N.C. Players

The M.S.N.C. Players is the drama organization on campus. The club was formed by a group of students interested both in producing plays and in furthering their appreciation of theatre through discussion and through attending plays given by other groups in this area.

The M.S.N.C. Players presents a dramatic program each semester. Moss Hart's "Light Up the Sky" was produced in the spring of 1953. In the fall of the same year three short plays shared the drama bill. They were, James Barrie's "Twelve Pound Look", Julian Thompson's delightful farce "The Warrior's Husband", and Noel Coward's bitter comedy "Still Life".

Social activities, including cast-crew parties after the productions and theatre parties, are an important part of the Player's program.

The theatre offers a great variety of jobs, from scene painting to ticket selling, for all interested students.

This year, 1954, the club is taking the necessary steps to organize a national dramatics fraternity chapter here at Normal.

The officers for 1953-54 were Lois Bowman, President; Harold Ballou, Vice-President; Barbara Wilcox, Secretary; Norma Hewitt, Treasurer; and Holcomb Thurman, Historian. William Work is the faculty advisor.



Row 1: B. Hawkins, M. Scalge, C. Gonser, R. Rogg.  
 Row 2: P. Grace, Mr. Belcher, Miss Curtis, Miss Hukill,  
 Mr. Johnson, H. Gonser, J. Strayer, Mr. Loesell,  
 Mr. Giles, Mr. Grether, B. Crawford.

Row 3: D. Strayer, B. Moy, P. Miller, M. Folconer, M. Car-  
 penter, A. Carpenter, D. Donigan, M. Frownfelter,  
 K. Campbell.

## Natural Science Club

The Natural Science Club, under the sponsorship of Dr. Bert Johnson, strives to promote a greater interest in science and to encourage students to see the importance of science in both teaching and in everyday living. To carry out the goals of the club, a variety of topics are included in the activities of the year.

The first meeting of the year was concerned with getting acquainted and discussing future meetings of the club. Slides of the spring picnic were shown and these brought back happy memories. The new officers were elected for the year and serving as President was Harrison Gonser; Vice-President, James Strayer; Secretary, Mary Jo Falconer; Treasurer, Rodney Rogg; and Madeline Carpenter, Reporter. The meeting ended with refreshments of coffee and cookies.

Next on the agenda was a lecture and

demonstration by Mr. Robert Butch of the University Museums of Ann Arbor. He showed the group how to skin and stuff a bird. Further meetings of the club consisted of a joint meeting with the Chemistry Club with Mr. Fred Wagner of the Gulf Refining Company informing the group about the use of new chemical products in science, an interesting lecture by Dr. Curtis on Monomie Indians, and a final meeting with the Chemistry Club and History Club, at which time Dr. Johnson showed his slides of the Peruvian Indians.

To culminate the activities of the year, a group of the club members went to Mill Lake Camp for a weekend. All of the members agreed that this was a fine way to close an enjoyable and educational year.





Row 1: C. Cocroft, B. Tarr, M. Stamy, Mrs. Herrick, M. Jordan.  
Row 2: F. Allen, S. O'Fiaro, G. Cumming, M. Tree, E. Ouder Kirk.

## Occupational Therapy Club

The Occupational Therapy Club is open to all occupational therapy students on campus and tries to acquaint its members with the different aspects of this field. Sponsored by Mrs. Herrick and Miss Holtom, this year's officers were Marilyn Stamy, President; Barbara Tarr, Vice-President; Constance Blazer, Secretary; Phyllis Aton, Treasurer; and May Jordan, Program Chairman. The girls succeeded in planning an active year.

The first meeting in the fall was a picnic at Riverside Park to orient the students to the O. T. Club. Later in the fall the club sponsored a trip to Dearborn Veteran's Hospital where they

learned about the program which the Veteran's Administration offers occupational therapists. In December, we held the annual Bazaar and gave a Christmas play for the children at Rackham and for the patients at Ypsilanti State Hospital. In the spring many members attended the Michigan Occupational Therapy Association meeting at Ford Hospital in Detroit and the club enjoyed its annual banquet at which new officers were installed.

During the year various movies and guest speakers were featured on such topics as gardening, travel, photography, square dancing, story telling and many others.



Row 1: F. Norton, M .Honton, S. Dickerson, J. Jackson, J. Lord, J. Robinson.  
 Row 2: C. Hogle, S. Friedly, D. Hort, N. Emerson, S. Winters, B. Signor.

## Student Religious Association

The S.R.A. is an organization for students of all faiths. Its activities center about Starkweather Hall. The S.R.A. council is the guiding body of the association, consisting of two representatives from each church group and is responsible for planning the intergroup activities of a local, national, and international nature.

Its purpose is to promote better understanding and fellowship between the church groups, to encourage participation in the program of the local churches, and to sponsor student and faculty attendance at conferences.

Some of the activities sponsored this year were the Freshmen Open House, two all-college square dances, a float in the Homecoming Par-

ade, and a weekly coffee hour for faculty and students. The most noteworthy project for the year was the Religious Emphasis Week held in November.

Serving as officers are: President, Shirley Dickerson; Vice President, Natalie Davis; Secretary-Treasurer, Jean Jackson.

The Advisory Board consists of Miss Pearle Baxter, Dr. Harry De Vries, Mr. Olin Eckley, Dr. Herbert Gauerke, Dean Susan Hill, Miss Dorothy James, Dr. John Sattler, Mr. Earl Studt.

The S.R.A. owes a debt of gratitude to Mrs. Leonard Menzi and Mrs. Carl Erikson who are the Co-directors of Starkweather Hall. They are the foundation upon which it rests.





Row 1: N. Pitts, J. Jackson, M. Fritz, M. Hardin, S. Watson, B. McDnald, M. Van Patten, S. Bishop, C. Hahn.  
 Row 2: J. Simaren, J. Holden, K. Sawyer, Father Schoolmaster, N. Ford, J. Tragge, A. Hemingway, R.

Gould.  
 Row 3: D. Karstetter, R. Hansen, L. Hall, M. Tree, S. Winters, M. Carpenter, A. Hughes, K. Griffith, K. Clark.

## Canterbury Club

The Canterbury Club is an Episcopal organization for college students.

They meet every Sunday evening at St. Luke's church house for dinner and an evening prayer service. Following the services are discussions related to Christianity in terms of the college student.

We began our year with a "get acquainted" dinner which was put on by the Episcopalian faculty members. At this time we met our future

professors in a pleasant and informal manner.

In the spring there was a week-end retreat for all college students in the Diocese of Michigan at Holiday House.

Every Tuesday morning throughout the entire school year, we had a service of Holy Communion at 7 a. m. at Starkweather Hall. After communion, we went *en masse* to the Union for breakfast.

Father Richard Schoolmaster is our chaplain.



Row 1: M. Fillmore, E. Tully, D. Doetsch, J. Armstrong, L. Miller, R. Miller, J. McMillian, A. L. Lieber, N. Davis.

Row 2: J. Weyer, R. Martin, P. Wolfe, I. Petrie, J. Teston, I. Brady, D. Bilby, J. Finkbeiner, J. Castleman, J. Sutton.

## Christian Youth Fellowship

Christian Youth Fellowship is sponsored by the First Baptist and Congregational Churches of Ypsilanti. Here people of all denominations meet for Christian Fellowship under the leadership of Dick Miller, President; Gordon Jackson, Vice President; Helen Tenhopen, Secretary; Joyce Armstrong, Treasurer; with Mr. and Mrs. Ernest Van Valkenburg as advisors.

The purpose of the group is to help students retain church affiliations while in college. This is done by the Sunday evening Vesper Services held at Starkweather at seven and Friday evening recreation fellowship. The Sunday evening services present discussions and special speakers. Some topics for this year have been "Christians in Industry", "Psychology in Religion", "Bible as Literature", and a book review of "**Campus Gods**". The speakers are chosen from all walks of life.

We are planning a Spring Retreat at Kensington Metropolitan Park.





Row 1: R. Meyer, R. Heinrich, C. Rikley, P. Neuman, D. Memhardt, F. Weide, J. Kehrer, G. Zimmermann.  
Row 2: E. Bakhaus, D. Brommer, C. Blazer, S. Schomaker,

C. Millar, C. Thompson, B. Converse, V. Cushman, C. Kehrer.

## Gamma Delta

Gamma Delta is probably the newest organization on campus, for it was officially recognized in February. It is a national fraternity for Missouri Synod Lutheran students. Our group is affiliated with the Tau Chapter at the University of Michigan Lutheran Chapel. We hold our meetings once a month at Starkweather Hall and also participate in many of the social activities held by the Ann Arbor Chapter.



Row 1: B. Shanklin, A. Earick, Rev. H.C. Sipe, P. Bossia, J. Kohlhagen.  
Row 2: B. Seils, S. Friedly, L. Gordon, J. MacDermid.

## Lutheran Students Association

The Lutheran Student Association is open to all Lutheran students and those interested in the purposes and principles of this club. Its purpose is to provide spiritual and social fellowship to its members. Meetings are held bi-weekly on Wednesday evenings from 7:00 to 8:00 p. m. Of course, a primary concern of the organization is to increase membership.

During 1953-1954, Pastor Yoder from the University of Michigan led group discussions on the Book of Matthew.

The faculty adviser of the group is Mr. Arthur D. Earick. Pastor Harley Sipe of the Immanuel Lutheran Church serves as pastoral adviser. The officers in 1953-1954 were Paul Bossia, President; Shirley Friedly, S.R.A. representative; and Jane Gutenschwager, Secretary-Treasurer.





Row 1: D. Dossin, S. Hochbein, B. Schmitt, E. Andre, R. Kennedy, J. Bozymowski, J. Brown, C. Hogle, M. Duyck.

Row 2: S. Cloncy, M. O'Toole, M.A. Hommel, D. Adams, M. Monroe, T. Fagan, J. Palazzolo, D. Sinnett, M. Proton, B. Bott, J. Panowicz, J. Breniser.



Row 1: J. Murphy, J. Lomb, J. Schuch, F. Marvin, W. Sobeski.

Row 2: C. Taylor, B. Ruge, B. Schmitt, E. Andre, R. Kennedy, J. Bozymowski, J. Brown, S. Pryce, M.

Lorson, J. Levoek.

Row 3: M. Stephen, M. Manley, B. Bonneau, B. Adelholt, V. Knoblock, A. Hiller, M. Hunt, B. Foley, M.J. Liston, S. Husted, W. Beal, D. Stumm, B. Nieman.

## Newman Club

The Newman Club is the Catholic organization on this campus. Its membership has spread, however, so that it now includes many students of Cleary College.

Meetings are held bi-monthly on Tuesday evenings in the auditorium of St. John's Church

During the fall semester the club sponsored two breakfasts and a Day of Recollection. The spring semester included two more breakfasts and a dance.

Our officers for the year were Ronald Kennedy, President; John Bozymowski, Vice President; Eileen Andre, Recording Secretary; Barbara Schmitt, Corresponding secretary; and Jean Brown, Treasurer. Our chaplain was Father Krieg and our faculty advisor was Mr. Fallahee.



Row 1: B. Chapman, A. Jacobs, F. Norton, R. Appleton, B. Appleton, B. Thoresen, K. Santer, D. Hickman.  
Row 2: R. Gersten, M. Masters, P. Barns, W. Rose, B. Borgen, W. Donald, Miss Simons, L. Norton, L. Bowman, R. Atkins.  
Row 3: S. Schomaker, R. Elder, B. Crawford, S. Wright, M. Scrivens, C. Kerr, M. Hanton, S. Dickerson, E. Smith, J. Kaiser, M. Bonadio.

## Wesley Foundation

The Wesley Foundation is the Methodist organization on our campus. The purpose of the group is to provide a Christian atmosphere for interested students.

The activities of Wesley include Sunday evening co-operative dinners, worship services, discussions, movies, and service projects. Friday night is "party" night and anything from square-dancing to charades may be in order. The main service project for last year was a Christmas party for a group of underprivileged children. This party, as well as all other activities, took place at the Methodist Church and the Church House, our "home away from home".

The president for the year is Barbara Borgen. Lester Norton, Pat Barnes, and Bill Rose are the other officers. Miss Marian Simons is the Student Director.



# Aurora Staff



P. Neuman, M. Lindsay, K. Slick.

The 1954 Aurora, for the first time, is primarily a senior yearbook.



D. Johnson, Editor; T. Mott, Bus. Mgr.

Editor for the book was Doris Johnson, business manager, Thelma Mott, and activities editor, Violet Cushnack. Photography was done by Dick Oltmanns of the Audio Visual Department, Mrs. Rosemary Lawrence of Ypsilanti, and Lyndon Studios of Dexter. The yearbook was printed by the Gray Printing Company of Fostoria, Ohio.

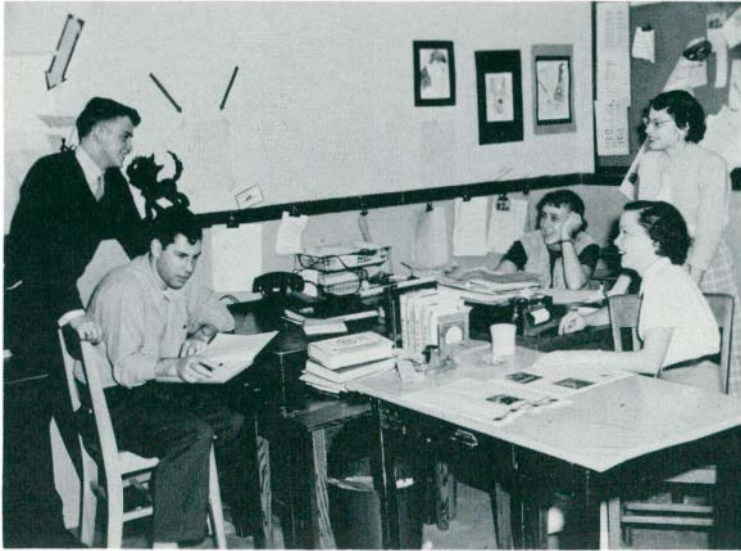


J. Roberts, J. Vander Meer, D. Picard.



F. Swenson, F. Ambrose, V. Cushnack, C. Leon.

# Normal News



D. Kleinsmith, S. Weckstein, N. Davis, B. Signor,  
B. Feldstein.

The Normal News, weekly student publication, has come out this past year with larger issues than previously distributed. Instead of an equal number of six and four page issues, this year's Normal News has extended to six, eight and ten pagers with a rare four pager.

Editor-in-chief for both spring and fall semester has been Beverly Feldstein; Business Manager was Steve Weckstein, and Assistant Editor, Natalie Davis. Don Kleinsmith was Sports Editor and Beth Signor, Advertising Manager.



M. Carpenter, S. Wright, L. Lemon, N. Ball, J.  
Thrush.



D. Alchin, L. VanOrsdale, J. Thompson, R. Jensen,  
B. Converse, F. Forsythe.



# *Seniors*

February Graduates

June Graduates





Row 1: B. Carroll, C. Fisher, J. Durant, D. Ruyle.

## Senior Class Officers

The Senior Class of 1953-1954 made great strides toward unity and cooperation through working together. The officers, Clyde Fischer, President; Joanne Durant, Vice-President; Barbara Carroll, Secretary; Dave Ruyle, Treasurer; led the class meetings, which were held in Welch Auditorium. The attendance at these meetings broke all previous records. Mr. Floyd Leib assisted the class as faculty advisor.

A resume of the activities recalls the year's highlights. "Make Southern III," the senior float won second place in the Homecoming Parade; the contribution to the Christmas Party was voice recording; 105 diplomas were presented at January graduation; the Senior Musical, "Leave Her to Hell," was a smashing success! A dye for a school ring was left as a lasting memento to Michigan State Normal. The final social function, "The Senior Ball", terminated the calendar for the graduates.



**ABERNETHY, PATRICIA**  
 2735 Waldhein Drive, Port Huron  
 Physical Education Major, B.S.  
 Sigma Nu Phi, W.R.A. Student Council,  
 Modern Dance Club.



**AYLMER, EDWARD**  
 Buzzards Bay, Mass.  
 Industrial Arts Major, B.S.  
 Industrial Arts Club, Kappa Phi  
 Alpha, Cross Country, Track.

**BAKER, JUNE**  
 140 W. Lincoln Avenue, Flint  
 Early Elementary, B. S.  
 I.V.C.F.

**BANEK, BETTY JANE**  
 1247 E. First Street, Monroe  
 Occupational Therapy, B.S.  
 I.V.C.F.



**BASILE, BARBARA**  
 210 W. Newall Street, Flint  
 Early Elementary, B.S.  
 Delta Sigma Epsilon, Newman Club,  
 Summer Choir.

**BEEBE, INEZ A.**  
 1210 Congress Street, Ypsilanti  
 Early Elementary, B.S.  
 Alpha Phi Omega (Ferris)

**BERARDUCCI, BARBARA**  
 28467 Victor, Roseville  
 Home Economics, B.S.  
 Home Economics Club, Catalina Club,  
 Newman Club, Natural Science Club.



**BEVIS, DOROTHY**  
 625 E. Liberty, Ann Arbor  
 Occupational Therapy, B.S.

**BOYE, DALE E.**  
 22131 Fresard Blvd., St. Clair Shores  
 Junior-Senior High, A.B.  
 Math Club, L.S.A., Normal News,  
 Sigma Alpha Delta.

**BUXTON, CLYDE F.**  
 1334 Magnolia, Inkster  
 A.B.  
 Chemistry Club, Math Club, Kappa  
 Delta Pi.



**CASSELBERRY, ROBERT**  
 413 Ballard Street, Ypsilanti  
 Recreation, B.S.  
 Sigma Tau Gamma, Square Dance  
 Club.

**CECCARELLI, JOSEPH R.**  
 10401 Eagle Street, Detroit  
 Later Elementary, B.S.  
 History Club, Football, Square Dance  
 Club.



**COMBS, RUTH**  
 Williamston, R. No. 2  
 State Limited  
 I.V.C.F. State Limited Club.

**COLAN, JUAN H.**  
 92 Gyou, Sullana, Peru  
 Biology, B.S.  
 Natural Science Club, Chemistry  
 Club, Newman Club, Spanish Club,  
 Sigma Alpha Delta.

**DALY, ELEANOR JEAN**  
 9373 Clio Road, Clio  
 Home Economics Club, Alpha Sigma  
 Tau.



**DAVIS, PHYLLIS**  
 Orchard Heights, Bluefield, Virginia  
 Special Education, B.S.  
 Special Education Club, Alpha Sigma  
 Tau.

**DENTON, JAYNE**  
 25660 Eureka Road, Centerline  
 Secondary Education, B.A.

**DOBRIN, LAWRENCE L.**  
 917 Cross, Ypsilanti  
 Business Administration, B.S.



**FILLMORE, RONALD J.**  
 31428 York Road, Frasier  
 Junior-Senior High, B.S.  
 Phi Delta Pi

**ELIE, VINCENT R.**  
 223 N. Normal, Ypsilanti  
 Later Elementary, B.S.  
 Alpha Gamma Upsilon, Newman Club.

**EVANS, ELIZABETH**  
 2520 Thoyer, St. Joseph  
 B.A.  
 Mu Phi Epsilon, Band, Orchestra, His-  
 tory Club, Library Club, Stoic Society.



**FRID, RUSSELL A.**  
 450 E. Main, Northville  
 Industrial Arts, B.S.  
 Industrial Arts Club, Sigma Tau  
 Gamma.

**GEYER, KENNETH**  
 Cement City, A.B.  
 Sigma Alpha Delta

**GLEASON, MABEL**  
 Saline  
 State Limited  
 Choir, Choral Union.



**GÖÖCH, JULIAN**

**26558 Palmer, Royal Oak**

Physical Education, B.S.

Physical Education Club, Phi Sigma Epsilon.



**GRAVES, HENRY J.**

**917 Brown, Ann Arbor**

Later Elementary

Teacher's Certificate

**GRICE, WILLIAM J.**

**2214 Military, Dearborn**

Business Administration, B.S.

**GRISDALE, GEORGE A.**

**610 Marlin, Royal Oak**

Business Administration, and  
Business Education, B.S.

Arm of Honor, Pi Omega Pi, Tennis.



**HALL, MARILYN JOAN**

**9311 Meyers Road, Detroit**

Early Elementary, B.S.

Alpha Sigma Tau, Square Dance Club.

**HANSEN, CAPT. PAUL M., USAF**

**Route 1, Ypsilanti**

B.S.

**HERRMAN, DONALD**

**4301 Alter Road, Detroit**

Business Administration, B.S.  
Sigma Tau Gamma



**HILLIER, EMOGENE L.**

**2975 Hermanson, Saginaw**

Later Elementary, B.S.

**HOCK, LYLE ROY**

**519 W. Second Street, Davison**

Pre-Law, B.A.

**HOOVER, JOAN E.**

**28390 Elba Drive, Grosse Ile**

Early Elementary, B.S.

Normal News, Student Court, Women's League, Kappa Mu Delta, Kappa Delta Pi.



**HOPPE, JOANN**

**9638 Broadstreet, Detroit**

Physical Education, B.S.

W.R.A., Physical Education Club,  
Modern Dance Club, Square Dance Club, Catalina Club.

**HUSBAND, AUDREY JEAN**

**4028 Eighteenth Street, Ecorse**

Junior-Senior High, B.S.  
M.S.N.C. Players.



**JOHNSON, EDNA MARGARET**  
Ironwood

Early Elementary, B.S.

**KETZLER, IRENE**  
1420 N. Center Road, Flint

Later Elementary, B.S.

**KNAPP, JANE E.**  
4260 Charles Ave., Dearborn

Early Elementary, B.S.

Pi Kappa Sigma, Pi Gamma Mu, History Club, A.C.E., Modern Dance Club.



**KNIGHT, JEANNE**  
5959 Harger, Dearborn

Junior-Senior High, B.A.

Sigma Sigma Sigma, Natural Science Club.

**KNIRK, MARIAN**  
10057 Montrose, Detroit 27

Later Elementary, B.S.

**LANE, FRANK EVERETT**  
514 W. Cross, Ypsilanti

Music Education, B. Mus. Ed.

Band, Orchestra, Zeta Chi Sigma, Phi Mu Alpha.



**LILLEY, HOWARD L.**  
23624 Fordson Drive, Dearborn

Economics, B.S.

**LUCKHAM, WILLIAM R.**  
437 Hamilton Place, Ann Arbor

A.B.

**McQUADE, PATRICIA ANN**  
764 Woodmere, Detroit 9

Library Science, B.S.

Sigma Sigma Sigma, Cheerleader, Library Club, Student Council.



**MAXEY, WILLARD J.**  
145 N. Hamilton, Ypsilanti

Social Work, B.S.

Phi Delta Pi.

**MEGIVERON, GENE ERWIN**  
719 Cross, Ypsilanti

Natural Science, B.S.

Phi Sigma Epsilon, Natural Science Club.

**MARX, FREDERICK**  
4713 Korte, Dearborn

Industrial Arts, B.S.

Phi Delta Pi, Industrial Art Club.



**MERTENS, MARILYN**  
1004 Campbell Street, Detroit

Home Economics, B.S.  
Home Economics Club, Natural Science Club, Catalina Club.

**MIX, BARBARA**  
130 Florence, Highland Park

Occupational Therapy, B.S.  
Sigma Nu Phi.

**MOORE, LILLIAN**  
1019 E. Hariwick, Willow Run

Music, B. Music Ed.  
MSNC Choir, Mu Phi Epsilon.



**NASS, MRS. KATHLEEN H.**  
260 S. Wallace Blvd., Ypsilanti

Fine Arts, B.S.  
Art Club.

**OLDS, DOLORES**  
1963 Leslie, Detroit

Home Economics, B.S.  
Home Economics Club, Alpha Sigma Tau, I.V.C.F.

**OPLAND, RUTH JENNETTE**  
80 W. Square Lake Road, Pontiac

Later Elementary, B.S.  
Choral Union Kappa Mu Delta,  
House Council, Panhellenic Council.



**PAPP, ROBERT**  
2904 E. 112th Street, Cleveland, O.

Industrial Arts, B.S.  
Phi Delta Pi, Track, Cross Country.

**PARKER, RODNEY E.**  
500 Broadway, Lake City

Business, B.S.  
Phi Sigma Epsilon, Business Club.

**PECK, GLEN R.**  
R-3 8118 Washington, Grass Lake

Junior-Senior High, B.A.  
History Club, Pi Gamma Mu.



**PHILLIPS, ELAINE ADELE**  
518 Clinton Street, Adrian

Early Elementary, B.S.

**PICKARD, NORMAJEAN FRENTNER**  
765 Ford Street, Ypsilanti

Art, A.B.  
Art Club.

**POOLE, BARBARA ANN**  
6855 Calhoun, Dearborn

State Limited, State Limited Degree  
Delta Sigma Epsilon.





**PUDNEY, RUTH**  
2710 Elsinore Drive, Pontiac  
Administration and Supervision, B.S.

**RUSSO, ANTHONY WILLIAM**  
4027 Webb, Detroit  
Junior-Senior High, B.S.

**RYAN, RICHARD**  
719 Cross, Ypsilanti  
Special Education, B.S.  
Phi Delta Pi, Men's Union, Student  
Council.



**SABBADINO, DELORES**  
6206 Clio, Flint  
Physical Education, B.S.  
Physical Education Club, I.V.C.F.,  
Canterbury Club, W.R.A.

**SAMUELSON, MARIE**  
RFD 1, Tawas City  
Later Elementary, B.S.

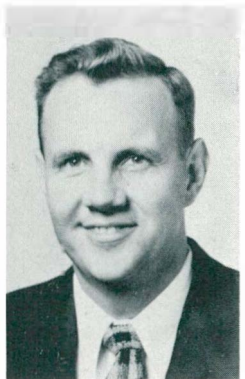
**SCHOENTHALER, LORRAINE**  
928 Oakland, Ann Arbor  
Early Elementary, B.S.



**SHER, SYDELLE**  
207 College, Holly  
Later Elementary, B.S.  
Student Council.

**SCOVILL, WINIFRED**  
1313 W. Cross, Ypsilanti  
Music, B.S.

**SEIDENSCHWARTZ, MARGARET**  
Route 1, Stuttgart, Arkansas  
Physical Education, B.S.  
W.R.A., Physical Education Club,  
L.S.A.



**SIMMONS, GLEN E.**  
39750 Expressway, Belleville  
Administration and Supervision, B.S.  
Kappa Phi Alpha.

**STEINBECK, JOYCE**

**STRANDBERG, WESLEY**  
Gowen  
Business Administration, B.S.



**STRAYER, JAMES L.**

**2811 Beut Oak, Adrian**

Junior-Senior High, B.S.

Chemistry Club, Natural Science Club.



**TAIG, VERA**

**3543 Watkins Lake, Pontiac**

Later Elementary, B.S.



**TARPINIAN, GENNY**

**303 Midway, Pontiac**

Junior-Senior High, B.S.

Delta Sigma Epsilon, Cheerleader,  
Natural Science Club, Newman Club.



**TATE, SHIRLEY**

**East Tawas**

Early Elementary, B.S.



**TEODECKI, FRANK S.**

**13350 Elmdale Ave., Detroit 13**

Pre-Law, B.S.

Sigma Tau Gamma, History Club,  
Newman Club.



**THEAKSTON, JOHN**

**13624 Warwick, Detroit**

Junior-Senior High, B.S.

Sigma Tau Gamma.



**TOWNSEND, ROSEMARY  
WILLIAMSON**

**2224 W. Kearsley, Flint**

Special Education, B.S.

Sigma Nu Phi, Special Education Club.



**TROTTER, DOLORES DARLENE**

**11369 Dequindre, Hamtramck**

Early Elementary, B.S.

Delta Sigma Theta, A.C.E., C.Y.F.,  
History Club.



**WHITFIELD, ROSEMARY K.**

**117 N. Summit, Ypsilanti**

Early Elementary, B.S.



**WODTKE, WALLY**

**21910 Elizabeth, St. Clair Shores**

Art, B.S.

Sigma Alpha Delta.



**YORK, GEORGE R.**

**6253 Ternes, Dearborn**

Junior-Senior High, B.S.

History Club, Pi Gamma Mu, Sigma  
Alpha Delta.





**ADAMS, WILMA**  
217 Observatory, Ann Arbor  
State Limited  
Stoic

**AGNEW, CONSTANCE**  
220 Hickory, Milford  
Business Administration, B.S.  
Business Club.

**ALBRIGHT, MARCIA**  
216 N. Washington, Ypsilanti  
Occupational Therapy, B.S.  
M.S.N.C. Players, C.Y.F., O. T. Club.



**ANDERSON, BARBARA**  
961 Sherman, Ypsilanti  
State Limited  
State Limited Club.

**ANDERSON, MARILYN J.**  
903 North 19th Street, Escanaba  
Later Elementary, B.S.  
Stoic, Goodison Hall, V. P.; English Club, Choral Union, L.S.A.

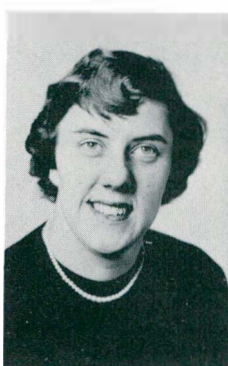
**ANDERSON, MARILYN W.**  
610 Parkview Drive, Detroit  
Early Elementary, B.S.  
Alpha Delta Pi, (U. of Miami)



**ANDORFER, PATRICIA**  
311 Esmond, Ft. Wayne, Ind.  
Art, B.S.  
History Club, Modern Dance Club, English Club, Normal News.

**APPLEYARD, ALFRED**  
1241 Calvert  
Jr.-Sr. High School, A.B.  
Arm of Honor, English Club, Interfraternity Council.

**ASATO, WALTER**  
2408 Waolani Ave., Hawaii  
Jr.-Sr. High School, B.A.  
Phi Delta Pi, Canterbury Club.



**BABCOCK, JOHN**  
413 W. Forest Ave., Ypsilanti  
Jr.-Sr. High School, B.A.  
M.S.N.C. Players, History Club.

**BAER, BARBARA**  
530 Superior, South Haven  
Early Elementary, B.S.  
Theta Lambda Sigma, Women's League Ad Board, Women's League Exec. Board, Student Council, W.R.A.

**BAILEY, BARBARA**  
15717 Collinghom Dr., Detroit  
Business Administration, B.S.  
Business Club, Normal News.



**BAKER, DONALD**  
609 W. Madison, Ann Arbor  
Business Administration, B.S.



**BALASKAS, DORTHEY**  
413 W. Forest, Ypsilanti  
Special Education, B.S.  
Choral Union, Choir, Special Education Club, Sigma Nu Phi.

**BAMMEL, BARBARA**  
501 Washtenaw, Ypsilanti  
Music, B.M.  
Alpha Sigma Tau, Choir, Choral Union, Mu Phi Epsilon.

**BANWELL, GLENNA**  
Alanson, Michigan  
Special Education, B.S.



**BARKER, EUGENE**  
306 N. Adams, Ypsilanti  
Music, B.M.  
Band, Choral Union.

**BEAN, DORIS**  
10659 Katherine, Dearborn  
Physical Education, B.S.  
Physical Education Club, W.R.A., Sigma Nu Phi, Normal News.

**BEHNKE, JEAN**  
735 Joshgn, Pontiac  
Business Club, B.S.  
Pi Omega Pi, Business Club.



**BELCHER, A. DOLORES**  
Cement City  
Early Elementary, B.S.

**BENNETT, DORIS**  
15750 Leona Dr., Detroit  
Jr.-Sr. High School, B.S.  
Alpha Sigma Tau, Science Club, Goodison Senior Counselor, Sr. Class Secretary.

**BERGER, ROSE ANN**  
Deerfield  
Later Elementary, B.S.  
W.R.A., Jones Hall Treasurer, Janes Hall President.



**BERGSTROM, HOWARD**  
Route 3, Cheboygan  
Jr.-Sr. High School, B.S.  
Pi Gamma Mu.

**BERRIDGE, EDITH**  
401 Force Rd., Attica  
Early Elementary, B.S.  
A.C.E., Alpha Sigma Tau.



**BETTIS, BARBARA**  
158 Arbor Ave., Monroe  
State Limited  
State Limited Club.

**BEZIRIUM, THEODORE**  
1121 Spring, Ann Arbor  
Later Elementary, B.S.

**BISHOP, SHIRLEY**  
629 W. 13th, Traverse City  
Early Elementary, B.S.  
Campus Sisters, W.R.A. Canterbury Club.



**BLECKMAN, DOLORES**  
1420 Geddes, Ann Arbor  
Early Elementary, B.S.

**BLUM, LaROY**  
Orchard Lake  
Art, B.S.  
Zeta Chi Sigma, I.F.C., Student Council.

**BOGETTA, DOROTHY**  
40036 Michigan Ave., Wayne  
Early Elementary, B.S.  
Sigma Nu Phi.



**BONADIO, MARY LOU**  
1106 Pearl St., Port Huron  
Later Elementary, B.S.  
Alpha Sigma Tau, Women's League Exec. Board, King Darn Council, Wesley Foundation.

**BONVALLET, NORMA JEAN**  
404 N. Huron, Ypsilanti  
Home Economics, B.S.  
Home Ec. Club.

**BORGEN, BARBARA**  
2050 Bolivia, Fenton  
Early Elementary, B.S.  
Wesley Foundation, Drama Club.



**BOWERS, ANNABELLE**  
54200 Pontiac Trail, Milford  
Later Elementary, B.S.

**BOWMAN, LOIS**  
Blissfield  
Jr.-Sr. High School, B.A.  
M.S.N.C. Players, Wesley Foundation, Freshman Counselor.

**BRADEN, JEAN**  
4910 Glenn Ave., Flint  
Early Elementary, B.S.



**BRADY, ISABEL**  
Roscommon

Music, B.M.

C.Y.F., Mu Phi Epsilon, Stoic,  
Choral Union.



**BRAMMER, DORIS**  
20645 Wahrman, New Boston  
Later Elementary, B.S.

**BRANCH, MARITA**  
1324 Wells, Ann Arbor

Recreation, B.S.  
W.R.A., Physical Education Club.

**BRAWNER, BETTY**  
6839 Theisen, Dearborn

Music, B.M.

Mu Phi Epsilon, Women's League,  
Choir, Choral Union.



**BROWN, DUANE**  
1028 E. Yale Ave.

Jr.-Sr. High School, B.S.  
Phi Sigma Epsilon.

**BROWN, MAX**  
1817 Brooklyn Ave., Ann Arbor  
B.S.

**BRUCE, LUCILLE**  
99 King St., Detroit

Music, B.S.

Choral Union.



**BUNGE, DUANE**  
318 W. Forest, Ypsilanti

Business Administration, B.A.

**BURGESS, BETTY JEAN**  
4935 VanDyke Rd., Brown City

State Limited  
I.F.C., State Limited Club.

**BURK, NANCY ROSE**  
16240 Toepper Drive, Detroit

Jr.-Sr. High School B.A.

M.S.N.C. Players, Gavel and Ros-  
trum, Newman Club.



**BURTON, EDWARD**  
4330 Inkster Rd., Inkster  
Chemistry, B.S.

**BURZYCK, JEROME**  
Saginaw

Business Administration, B.S.  
Zeta Chi Sigma, Business Club,  
Student Council, I.F.C., Normal  
News.



**BUTLER, LOCKWOOD**  
 1488 Maywood, Ann Arbor  
 Pre-Law, B.A.

Brown Dorm Council, History Club,  
 Pi Gamma Mu, Natural Science  
 Club, Human Relations Club.

**CALLIS, CHERILL**  
 311 N. W. Second St., Galva,  
 Illinois

Special Education, B.S.  
 Women's League, Delta Sigma  
 Epsilon, Kappa Delta Pi, Pi Kappa  
 Delta, Stoic, Special Education  
 Club.

**CARL, M. ANNE**  
 1905 Orchard, Ann Arbor  
 Early Elementary, B.S.



**CARPENTER, RUTH**  
 1535 Monteray, Flint  
 Natural Science, B.A.

**CARROLL, BARBARA**  
 713 Fifth Ave. So., Escanaba  
 Special Education, B.S.

Sigma Sigma Sigma, Sr. Class  
 Secretary, Newman Club, English  
 Club, Special Education Club,  
 Women's League Ad Board.

**CASS, THELMA**  
 Romulus  
 Junior High School, A.B.



**CASTELLUCCI, ANITA**  
 72121 Campground Rd., Romeo  
 Jr.-Sr. High School, B.S.

Delta Sigma Epsilon, English Club,  
 Drama Club, Dorm Ad Board.

**CASTIGLIONE, ELIZABETH**  
 2755 Commerce, Milford

Later Elementary, B.S.  
 Dorm Social Chairman, Freshman  
 Counselor, Campus Sister, Student  
 Council.

**CASTLEMAN, JAMES**  
 442 Genessee, River Rouge  
 Business Education, B.A.  
 Arm of Honor, C.Y.F., Business  
 Club.



**CATE, HELEN**  
 526 W. Huron St., Pontiac  
 Later Elementary, B.S.  
 Kappa Mu Delta.

**CHASE, PARKE**  
 6700 Penrod, Detroit  
 B.S.  
 Phi Delta Pi.

**CLEMENTS, NORMA**  
 16544 Beaverland, Detroit  
 Later Elementary, B.S.  
 Kappa Mu Delta.



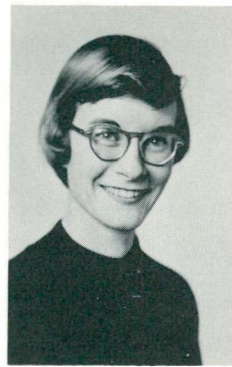
**COLLINS, SYLVESTER**  
766 Leith St., Flint

Physical Education, B.S.  
Omega Psi Phi, Student Council,  
Dorm Council, Track, Physical  
Education Club, Varsity Club.



**CONAUGHTY, BERNADINE**  
5955 Mayburn, Dearborn

Jr.-Sr. High School, A.B.  
Sigma Sigma Sigma, Panhellenic  
Council.



**COVINGTON, THELMA**  
416 S. Washington, Ypsilanti

Early Elementary, B.S.  
Delta Sigma Theta, W.R.A.

**CRAWFORD, JOYCE**  
Route No.1, Rapid River

Later Elementary, B.S.  
Student Council, Women's League  
Ad Board.



**CROWE, JERRY**  
1209 Clague Ave., Ann Arbor

Business Education, B.S.  
Alpha Sigma Tau.

**CUSTER, JERRY**  
711 Washtenaw, Ypsilanti

Jr.-Sr. High School, B.A.

**CUTLER, HELEN**  
445 Harriet St., Flint

Later Elementary, B.S.

**DAHLSTROM, CARL**  
712 Ball, Owosso

Industrial Arts, B.S.  
Sigma Tau Gamma, Industrial  
Arts Club, Student Council, Dorm  
Council.

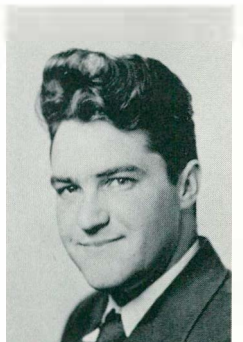
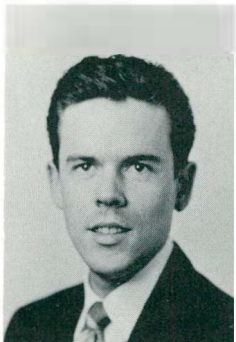


**DAVIS, LARRY**  
8626 Stony Creek Rd., Ypsilanti

Jr.-Sr. High School, A.B.  
Sigma Tau Gamma.

**DAVIS, NATALIE**  
40 Richmond St., Winchester,  
N. H.

Jr.-Sr. High School, B.A.  
Pi Kappa Delta, S.R.A., C.Y.F.,  
M.S.N.C. Players, Debate Squad,  
Normal News, English Club.



**DAVIS, RALPH**  
422 W. Forest, Ypsilanti

Art, B.S.  
Sigma Alpha Delta, English Club.

**DEAN, ALVIN**  
712 Washtenaw, Ypsilanti

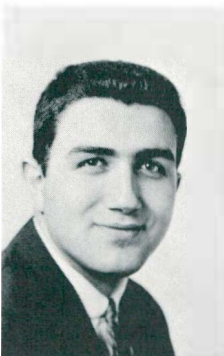
Jr.-Sr. High School, A.B.  
Sigma Tau Gamma.



**DeLAND, FLORENCE**  
13625 Manor, Detroit  
Junior High School, A.B.

**DEMPSEY, RICHARD**  
709 W. Cross, Ypsilanti  
Jr.-Sr. High School, B.S.  
Alpha Gamma Upsilon.

**DENNISON, JACQUELINE**  
1318 Wilmot St., Ann Arbor  
High School, B.S.  
Delta Sigma Epsilon, Drama Club,  
Women's League.



**DeVOE, MARY JO**  
312 N. Union, St. Louis, Mich.  
Special Education, B.S.

Sigma Nu Phi, Women's League  
Ad Board, W.R.A., King House  
Council, Special Education Club.

**DE WITT, SHIRLEY**  
121 N. Normal, Ypsilanti  
Later Elementary Certificate.

**DiBIAGGIO, JOHN**  
12191 Duchess, Detroit  
Pre-Medical, A.B.  
English Club, Student Council,  
Lambda Iota Tau.



**DICKERSON, HELEN**  
3904 16th Street, Ecorse  
Occupational Therapy, B.S.  
O.T. Club, W.R.A., Alpha Kappa  
Alpha.

**DiCOMANDREA, JOHN**  
116 N. Beacon St., Watertown,  
Mass.  
Physical Education, B.S.  
Men's Union, Physical Education  
Club, Alpha Gamma Upsilon,  
Track, Cross-Country Team.

**DOETSCH, DOROTHY**  
246 S. 2nd St., Marine City  
Early Elementary, B.S.  
C.Y.F., Choral Union.



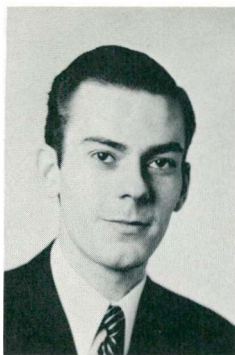
**DONIGAN, DON**  
33 Mechanic St., Pontiac  
Jr.-Sr. High School, B.S.  
Sigma Alpha Delta, History Club,  
Square Dance Club.

**DONOVAN, EVA**  
335 W. Lake, South Lyon  
Later Elementary, B.S.

**DURANT, JOANNE**  
122 Linden Court, Ypsilanti  
Early Elementary, B.A.  
Sigma Nu Phi, Women's League,  
Student Council, Senior Class Vice-  
president, All College Social Com-  
mittee.



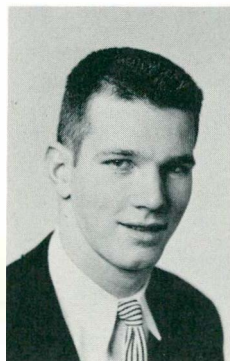
**EBERLE, JOHN**  
 117 N. Summit, Ypsilanti  
 Jr.-Sr. High School, B.S.  
 Sigma Alpha Delta.



**EBERSOLE, KEITH**  
 425 N. Adams, Ypsilanti  
 Industrial Arts, B.S.  
 Kappa Phi Alpha, Industrial Arts  
 Club, Football.

**ENGLE, ROSEMARY**  
 Route 1, Waverly, Ind.  
 State Limited.

**ERWIN, GRETCHEN**  
 522 Harriet, Ypsilanti  
 Early Elementary, B.S.



**FAGAN, TOM**  
 690 Baldwin, Detroit  
 Physical Education, A.B.  
 Alpha Gamma Upsilon, Newman  
 Club, Physical Education Club,  
 Varsity Club.

**FALCONER, MARY JO**  
 2630 Hickory Grove, Pontiac  
 Later Elementary, B.S.  
 Natural Science Club, Freshman  
 Counselor.

**FARRELL, JUDY**  
 922 S. State, Ann Arbor  
 Special Education, B.S.  
 Special Education Club, Alpha  
 Sigma Tau.



**FAULMANN LELAND**  
 33125 Utica Rd., Fraser  
 Business Education, B.S.  
 Phi Delta Pi.

**FELDSTEIN, BEVERLY**  
 423 S. 10th St., Escanaba  
 Special Education, B.S.  
 Normal News, Pi Kappa Delta,  
 Women's League, Special Educa-  
 tion Club, Gavel and Rostrum,  
 Debate.

**FILSINGER, MARY**  
 406 N. Hamilton, Ypsilanti  
 Early Elementary, B.S.  
 Sigma Nu Phi.



**FINKBEINER, HELEN**  
 315 Crest, Ann Arbor  
 Early Elementary, B.S.  
 History Club, Choral Union, A. C.  
 E., C.Y.F., Wesley Foundation.

**FISCHER, CLYDE**  
 15447 Winthrop, Detroit  
 Later Elementary, B.S.  
 Senior Class President, Kappa Phi  
 Alpha.



**FISHER, LENA**  
234 W. Liberty St., South Lyon  
Early Elementary, B.S.



**FLOOD, BIRDELLA**  
Manchester  
Early Elementary, B.S.



**FLYNN, DALE**  
3381 Clement, Flint  
Special Education, B.S.  
Phi Sigma Epsilon, Student Council.



**FOSTER, WILLIAM**  
1428 Sudbury Ct., Willow Run  
Village  
Music, B.M.  
Band, Orchestra, Choral Union,  
Phi Mu Alpha.



**FRANCIS, ROSEMARY**  
Oxford  
Later Elementary, B.S.



**FRANKS, ROSE MARIE**  
3695 Van Dyke, Detroit  
B.S.  
Alpha Kappa Alpha, Chemistry  
Club, Natural Science Club.



**FRITZ, MARILYN**  
832 Superior St., South Haven  
Special Education, B.S.  
Canterbury Club, Special Educa-  
tion Club, Student Council, Kappa  
Mu Delta, Orchestra, Panhellenic  
Council.



**FROWNFELTER, DONALD**  
Holly  
Later Elementary, B.S.  
Phi Delta Pi.



**GEMBALA, JOSEPH**  
32655 Menominee Ct., Wayne  
Later Elementary, B.S.



**GENN, OLIVER**  
5741 E. Grand River, Brighton  
Business Education, B.S.  
History Club, Pi Omega Pi, M.S.  
N.C. Players.



**GERMAIN, CAROL**  
2854 Mortenson Blvd., Berkley  
Physical Education, B.S.  
W.R.A., Physical Education Club.



**GONSER, CONSTANCE**  
215 E. Michigan Ave., Saline  
Later Elementary, B.S.  
Science Club.



**GONSER, HARRISON**  
215 E. Michigan Ave., Saline  
Jr.-Sr. High School, B.S. and  
Certificate  
Natural Science Club.

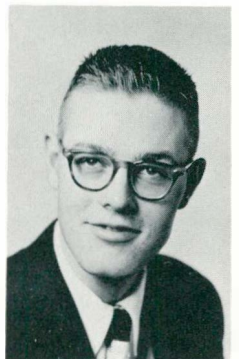


**GOODWIN, ROBERT**  
14915 Marlowe, Detroit  
Sociology, B.S.  
Normal News, Track.



**GORDON, ELIZABETH**  
2032 Clifford St., Flint  
Later Elementary, B.S. and  
Certificate  
Delta Sigma Theta, English Club,  
Science Club.

**GORSKI, LEONARD**  
29245 Dequindre, Royal Oak  
Pre-Dentistry, B.S.



**GOVAERE, MARIE**  
44425 N. Gratiot, Mt. Clements  
Early Elementary, B.S.  
Delta Sigma Epsilon.

**GRAHAM, RONALD**  
6293 Arkona, Milan  
Later Elementary, B.S.  
History Club, Sigma Alpha Delta.

**GRAY, MARJORIE**  
511 W. Forest Ave., Ypsilanti  
Early Elementary, B.S.



**GRENZ, ALEXZINE**  
Napoleon, N. D.  
Social Work, B.S.

**GROSSHANS, LYNN**  
427 Lothrop Rd., Grosse Pointe  
Home Economics, B.S.  
Home Economics Club, W.R.A.

**GROVES, LIONEL**  
2442 Fernwood Ave., East Ann  
Arbor  
Pre-Professional, B.S.  
Stoic



**GUSTAFSON, BETTYANN**  
16503 Tuller, Detroit  
Later Elementary, B.S.  
Alpha Sigma Tau.

**GUTENSCHWAGER, GERALD**  
824 Florence, Royal Oak  
Jr.-Sr. High School, B.S.  
Delta Sigma Phi.



**HAMILTON, MARILYN**  
 1018 Clovis, Mt. Morris  
 Physical Education, B.S.  
 Physical Education Club, W.R.A.

**HANTON, MARIANNE**  
 1823 Union, Port Huron  
 Early Elementary, B.S.  
 Wesley Foundation.

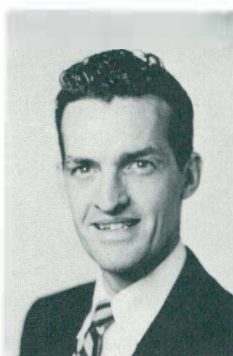
**HARDIN, MARY**  
 338 S. Fifth, Ann Arbor  
 Early Elementary, B.S.  
 Canterbury Club, S.R.A., Pi Kappa  
 Sigma, Science Club, International  
 Relations Club.



**HARDY, LAURA**  
 218 W. Thockery, Flint  
 Social Work, A.B.

**HARRELL, ALICE**  
 312 Wilton, Ann Arbor  
 Special Education, A.B.

**HARRIS, OPAL**  
 138 Hawkins, Ypsilanti  
 Jr.-Sr. High School, A.B.  
 Alpha Kappa Alpha.



**HARTLAND, MAXINE**  
 Milford  
 Early Elementary, B.S.  
 Kappa Mu Delta, W.R.A., Wom-  
 en's League, A.C.E., Dorm Coun-  
 cil.

**HATCH, CHARLES**  
 13274 10 Mile, Centerline  
 Industrial Arts, B.S.  
 Industrial Arts Club, Baseball, Phi  
 Sigma Epsilon.

**HAUSHALTER, ROBERT**  
 1672 Monson Ct., Willow Run  
 Village  
 Business Administration, B.S.



**HAVARD, BARBARA**  
 9460 McDougall, Hamtramck  
 Art, B.S.  
 Home Economics Club, Alpha  
 Koppa, Alpha.

**HELM, DONALD**  
 432 Starkweather, Plymouth  
 Jr.-Sr. High School, A.B.  
 Alpha Gamma Upsilon, Math Club,  
 Chemistry Club.

**HELMKAMP, DAN**  
 Pontiac  
 Pre-Medical, B.S.  
 Sigma Tau Gamma, Wesley  
 Foundation.



**HEWITT, NORMA**  
1805 Academy, Dearborn  
Early Elementary, B.A.  
Drama Club.



**HILL, RUDOLPH**  
7283 Orchard, Van Dyke  
Jr.-Sr. High School, B.S.  
Phi Sigma Epsilon, Physical Education Club, Varsity Club, Baseball.

**HILL, KERMIT**  
79 N. Allen, Ypsilanti  
Business Administration, B.S.  
Pi Omega Pi, Business Club.

**HILL, RUTH**  
6431 Whitewood, Detroit  
Early Elementary, B.S.  
Alpha Kappa Alpha



**HILLERY, ZELMA**  
2697 Arndt, Detroit  
Early Elementary, B.S.

**HOFFMAN, GILBERT**  
15459 Eastwood, Monroe  
Business Education, B.S.

**HOPPE, JOANN**  
404 N. Huron, Ypsilanti  
Physical Education, B.S.  
W.R.A., Catalina Club, Modern Dance Club, Square Dance Club.



**HOWARD, JAMES**  
32460 Lenawee, Wayne  
Jr.-Sr. High School, B.S.

**HOTCHKISS, RUSSELL**  
1960 Paris, Pontiac  
Jr.-Sr. High School, A.B.  
Math Club.

**HOY, PATRICIA**  
9355 Quandt, Allen Park  
Early Elementary, B.S.  
A.C.E., Pi Kappa Sigma, Panhellenic Council.



**HUNTINGTON, MARY**  
1200 S. Milford, Milford  
Later Elementary, B.S.

**ILLI, RONALD**  
428 Eberwhite, Ann Arbor  
Business Administration, B.S.  
Kappa Phi Alpha.



**INGLE, LOWELL**  
 35714 Norris, Wayne  
 Social Work, A.B.  
 Arm of Honor.

**INNES, JEANETTE**  
 Germania Rd., Snover  
 Early Elementary, B.S.  
 Choral Union.

**IRONS, JANET**  
 16651 Ardmore, Detroit  
 Jr.-Sr. High School, B.S.  
 Sigma Sigma Sigma, Newman  
 Club.



**JACKSON, GORDON**  
 Sheridan  
 Music, B.M.  
 Band, Orchestra, C.Y.F., Phi Mu  
 Alpha Sinfonia.

**JENKINS, JENNIE**  
 3791 15th, Ecorse  
 Special Education, B.S.  
 Delta Sigma Theta, Special Edu-  
 cation Club.

**JENNESS, WENDELL**  
 226 N. Huron, Ypsilanti  
 Jr.-Sr. High School, B.S.  
 Phi Sigma Epsilon, Chemistry.



**JENSEN, MARLENE**  
 118 W. McKay, Saline  
 Early Elementary, B.S.

**JOHNSON, CARLEEN**  
 1717 Copenan, Flint  
 Occupational Therapy, B.S.  
 Sigma Sigma Sigma.

**JOHNSON, DALE**  
 623 Patterson Ct., Inkster  
 Industrial Arts, B.S.  
 Industrial Arts Club.



**JULIEN, DANIEL**  
 14290 Northville, Plymouth  
 Jr.-Sr. High School, A.B.  
 Pi Kappa Delta, Gavel and Ros-  
 trum, Debate Club.

**JURACEK, JULIE**  
 15421 Iliad, Detroit  
 Later Elementary, B.A.  
 Theta Lambda Sigma, Women's  
 League Ad Board.

**KAPEEN, JOAN**  
 7676 Rushton, Brighton  
 Early Elementary, B.S.  
 A.C.E., L.S.A.



**KARAGEANES, MITCHELL**  
**9124 Joseph Campau, Hamtramck**  
 Industrial Arts, B.S.  
 Alpha Gamma Upsilon, Industrial  
 Arts Club.



**KELLER, JACK**  
**515 W. Montecello, Phoenix, Ariz.**  
 High School, Pre-Law, B.S.  
 Beta Beta Beta, Alpha Tau Omega,  
 Pi Gamma Mu.

**KELLY, JACK**  
**260 N. Elk, Sandusky**  
 Business Administration, B.A.  
 Sigma Tau Gamma, Wesley  
 Foundation.

**KELM, Jack**  
**1355 Weston Ct., Willow Run**  
 Village  
 Jr. Sr. High School, B.S.



**KEMP, CHRISTENE**  
**118 W. McKay, Saline**  
 Early Elementary, B.S.

**KERR, CAROLE**  
**116 W. Mansion, Jackson**  
 State Limited  
 Wesley Foundation, Choral Union.

**KERRIGAN, MARY**  
 Croswell  
 State Limited  
 State Limited Club, W. R. A.



**KILPATRICK, MARIAN**  
**331 Oak, Rochester**  
 Early Elementary, B.S.  
 Delta Sigma Epsilon.

**KIMBERLY, DONNA**  
**5320 Curdy Road, Howell**  
 State Limited  
 State Limited Club, I.C.F.

**KOHLHAGEN, JOYCE**  
**124 Turner, Romeo**  
 State Limited  
 State Limited Club, Lutheran  
 Students.



**KOKINAKES, EUGENIA**  
**309 Pauline, Ann Arbor**  
 Special Education, B.S.  
 Spanish Club, Special Education  
 Club, Sigma Nu Phi, Panhellenic  
 Council.

**KOKINAKES, FRANCES**  
**309 Pauline, Ann Arbor**  
 State Limited  
 English Club, Stoic Society, Sigma  
 Nu Phi, Women's League.



**KOSS, OLIVE**  
 15376 Appoline, Detroit  
 Occupational Therapy, B.S.  
 Theta Lambda Sigma, O. T. Club.

**KRUEGER, SALLY**  
 15163 University, Allen Park  
 Occupational Therapy, B.S.  
 O.T.Club, Drama Club.

**KRUETZMAN, JEAN**  
 902 Frank, Flint  
 Early Elementary



**KRUGGEL, BARBRA**  
 504 Lawrence, Ann Arbor  
 Early Elementary, B.S.  
 Pi Kappa Sigma.

**LAING, RICHARD**  
 7936 Willis, Ypsilanti  
 Art, B.S.  
 Phi Sigma Epsilon.

**LANE, BARBARA**  
 17689 Parke Lane, Grosse Ile.  
 Art, A.B.



**LEATHERS, SHARON**  
 13182 Mercier, Wyandotte  
 Jr.-Sr. High School, B.A.  
 Sigma Sigma Sigma, English Club,  
 Newman Club.

**LEPAK, ALICE**  
 29558 Cambridge, Garden City  
 Special Education, B.S.  
 Special Education Club, Sigma Nu  
 Phi, Jones Hall Vice-president.

**LEWIS, DONELDA**  
 38149 Ford, Wayne  
 State Limited  
 State Limited Club.



**LELLEVIG, DOLORES**  
 316 E. Lorain, Monroe  
 State Limited  
 State Limited Club.

**IRWIN, LILLIAN**  
 Alpena  
 Early Elementary, B.S.

**LILJA, MADGE**  
 311 E. Smith, Iron Mountain  
 Social Work, B.S.



**LINDEMAN, JOYCE**  
 6818 Robinson, Allen Park  
 Physical Education, B.S.  
 W.R.A., Physical Education Club.



**LINDSAY, MADGE**  
 19134 Littlefield, Detroit  
 Art, B.S.  
 Kappa Mu Delta, Women's League,  
 Jones House Council, Aurora Staff.

**LIPNITZ, SALLY**  
 Moran  
 State Limited



**LITTLE, EILEEN**  
 Allenton  
 State Limited

**LLOYD, MARILYN**  
 1385 Michigan  
 Later Elementary, B.S.  
 Kappa Mu Delta.

**LYNN, DONNA**  
 1028 Bement, Lansing  
 Jr.-Sr. High School, A.B.

**McALLISTER, GARTH**  
 244 Hamilton, Plymouth  
 Business Administration, B.S.  
 Alpha Gamma Upsilon.



**McCOMBS, MURIETTA**  
 1925 Bagley, Flint  
 Early Elementary, B.S.  
 I.C.F.

**McCORMICK, JOHN**  
 648 Kuehnle, Ann Arbor  
 English, B.A.  
 Sigma Alpha Delta.

**McGIVERN, PATRICIA**  
 14080 Northlawn, Detroit  
 Later Elementary, B.S.  
 Kappa Mu Delta, Stoic Society.



**McINTOSH, JOYCE**  
 218 S. Albion, Albion  
 Special Education, B.S.  
 Special Education Club, Delta Sigma  
 Theta, Choral Union.

**McKNIGHT, LOUISE**  
 226 N. Clark, Milledgeville, Ga.  
 Music, B.S.  
 Choral Union, Choir.



**McLARTY, SHIRLEY**  
617 W. Cross, Ypsilanti

Early Elementary, B.S.  
Women's League, Delta Sigma Epsilon.

**McLAUGHLIN, KATHLEEN**  
5478 Williamson, Dearborn

Early Elementary, B.S.  
Drama Club, Newman Club.

**McMANN, DIANE**  
835 Elmwood Ct., Dearborn

Later Elementary, B.S.  
Theta Lambda Sigma, Kappa Delta Pi, Goodison House Council, Senior Counselor.



**McMULLEN, HARRIET**  
48900 Denton, Belleville

Special Education, B.S.

**MAASS, PHYLLIS**  
1657 Fix, Monroe

State Limited

**McNALLY, GERALD**  
1314 Nottingham, Grosse Pointe Park

Pre-Law, A.B.  
Alpha Gamma Upsilon.



**MacDONALD, CHRISSIE**  
2849 Fourth, Trenton

Later Elementary, B.S.  
Theta Lambda Sigma, Stoic Society.

**MacDONALD, MAXINE**  
2315 Borth, Flint

Early Elementary, B.S.  
Sigma Sigma Sigma, English Club, Newman Club.

**MARTIN, DORIS**  
310 Raeburn, Pontiac

Early Elementary, B.S.  
A.C.E.



**MARTIS, PAUL**  
7358 Roland, Detroit

Later Elementary, B.S.

**MAYFIELD, JEAN**  
6508 Beechwood, Detroit

Early Elementary, B.S.  
Debate Club, Pi Kappa Delta, Alpha Kappa Alpha.

**MAYS, WILLIAM**  
R. F. D. 3, Milan

Speech, B.S.  
Phi Kappa Delta, Student Council, Debate.



**MEHARG, HOBART**  
202 Fraser, Yale

Business Administration, B.S.  
Kappa Phi Alpha.

**MELZOW, GEORGE**  
413 E. 7th, Royal Oak

Physical Education, B.S.  
Phi Sigma Epsilon, Business Club,  
Student Council, Physical Educa-  
tion Club.

**MESSIMER, JUDITH**  
71 Great Lakes, River Rouge

State Limited  
Choral Union.



**MIERAU, PATRICIA**  
13113 Wilfred, Detroit

Early Elementary, B.S.  
Women's League, Sigma Nu Phi,  
Dorm House Council.

**MILLER, LAMAR**  
26833 Penn, Inkster

Jr.-Sr. High School, B.A.  
M.S.N.C. Players, Debate, Kappa  
Alpha Psi, Pi Kappa Delta, Track.

**MILLER, MARGARET**  
435 Mill, Lincoln Park

Later Elementary, B.S.  
Natural Science.



**MILLER, RHEMA**  
25725 Hanover, Dearborn

High School, A.B.

**MILLER, RICHARD**  
232 E. Lake, South Lyon

Jr.-Sr. High School, B.S.  
Men's Union, Stoic Society, Phi  
Delta Pi, Math Club, Drama Club,  
C.Y.F.

**MILLS, DONNA**  
138 W. Newall, Flint

Special Education, B.S.  
Special Education Club.



**MONTGOMERY, VEDA**  
214 Heistermon, Bad Axe

Music, A.M.

**MORANSEE, JESS**  
4085 Moore, Inkster

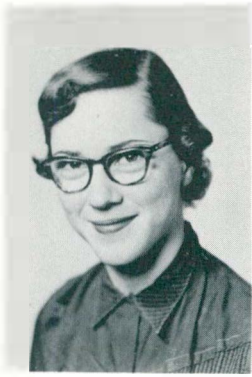
Music, B.M.

Band, Orchestra, Choral Union,  
Phi Mu Alpha Sinfonia, Kappa  
Alpha Psi.

**MORGAN, PATRICIA**  
6277 Davison, Davison

Special Education, B.S.  
Special Education Club.





**MOTT, THELMA**  
35005 Glenwood, Wayne

Early Elementary, B.S.  
Delta Sigma Epsilon, English Club,  
Bus. Mgr. Aurora, Lambda Iota  
Tau, Orchestra.

**MOUCH, DOLORES**  
9203 Mandale

Early Elementary, B.S.

**MOYER, BETTY**  
343 S. 4th, Ann Arbor

Early Elementary, B.S.  
Sigma Nu Phi, Women's League.



**MUIR, RICHARD**  
1501 Military, Port Huron

Moth, A.B.  
Sigma Alpha Delta.

**MURPHY, BEVERLY**  
2201 Pioneer Dr., Jackson

Early Elementary, B.S.  
Theta Lambda Sigma.

**MURPHY, WANITA**  
411 Olive, Ypsilanti

Physical Education, B.S.  
Modern Dance Club.



**NEWLIN, RUBY**  
1478 Helen, Inkster

Early Elementary, B.S.

**NICHOLAS, DOROTHY**  
16210 Patton, Detroit

Early Elementary, B.S.  
Theta Lambda Sigma.

**NIEMANN, LAVONNA**  
400 Perrin, Ypsilanti

Library Science, B.S.



**NOBLET, ANN**  
402 Emerald, Houghton

Later Elementary, B.S.  
Theta Lambda Sigma, Dorm  
Council.

**NORTON LESTER**  
2321 Devonshire, Lansing

Jr.-Sr. High School, A.B.  
S.R.A., Moth Club, Spanish Club,  
Wesley Foundation.

**NOWLAND, RICHARD**  
1505 Westfield, Ann Arbor

Special Education, B.S.  
Special Education Club.



**ODGERS, PATRICIA**  
**16766 Archdale, Detroit**  
 Physical Education, B.S.  
 W.R.A. Physical Education Club.



**OESTRIKE, RON**  
**28510 Sheeks, Flat Rock**  
 Physical Education, B.S.  
 Kappa Phi Alpha, Men's Union,  
 Physical Education Club.

**O'FARRELL, NILA**  
**15491 Traester, Detroit**  
 Music, B.S.  
 Delta Sigma Epsilon, Choral Union,  
 Chair.



**O'FIARO, SHIRLEY**  
**Clinton**  
 Occupational Therapy, B.S.  
 O.T. Club, Kappa Mu Delta, Normal News.

**OLTMANNS, HELEN**  
**556 Towner Ypsilanti**  
 Early Elementary, B.S.  
 History Club, O.T. Club, Stoic Society,  
 Canterbury Club.

**OLTMANNS, RICHARD**  
**556 Towner, Ypsilanti**  
 Jr.-Sr. High School, B.S.  
 History Club, Pi Gamma Mu.

**ONAGO, VIRGINIA**  
**2857 Parkard, Ypsilanti**  
 State Limited  
 Orchestra, State Limited Club,  
 C.Y.F.



**OSGOOD, EMMA**  
**Ida**  
 Later Elementary, B.S.

**OSHIRO, EDNA**  
**Box 225, Halaula, Hawaii**  
 Later Elementary, B.S.

**OSLER, JEROME**  
**332 W. Rankin, Flint**  
 Pre-Medical, B.S.  
 Dorm President, Student Council,  
 Cheerleader, Delta Sigma Phi,  
 Chemistry Club, Natural Science Club.



**PARKER, RODNEY**  
**500 Broadway, Lake City**  
 Business, B.S.  
 Phi Sigma Epsilon, Business Club.

**PARKER, WILLIAM**  
**1505 Stone, Flint**  
 Jr.-Sr. High School, A.B.  
 Debate Club, Math Club, Spanish Club.



**PELL, MARGARET**  
**15776 Fielding, Detroit**  
 Early Elementary, B.S.  
 Theta Lambda Sigma, Dorm House  
 Council.

**PENN, DAVID**  
**9120 Byron, Detroit**  
 Jr.-Sr. High School, A.B.  
 Omega Psi Phi.

**PETERS, SUZANNE**  
**220 Ann Arbor, Manchester**  
 Early Elementary, B.S.



**PETERSON, RALPH**  
**18131 Cornell, Detroit**  
 Business Administration, B.S.  
 Business Club, Arm of Honor.

**PHENIX, WILLIAM**  
**10204 Nardin, Detroit**  
 Jr.-Sr. High School, B.S.  
 Delta Sigma Phi.

**PIER, RAYMOND**  
**216 First, Evart**  
 Industrial Arts, B.S.  
 Industrial Arts Club, History Club,  
 Natural Science Club, Drama  
 Club, C.Y.F.



**PLACE, CHARLES**  
**2591 S. State, Ann Arbor**  
 Natural Science, B.S.

**POTTER, JAMES**  
**Willis**  
 Jr.-Sr. High School, B.S.  
 Phi Sigma Epsilon.

**RAGAN, ANNE**  
**126 College Place, Ypsilanti**  
 A.B.  
 M.S.N.C. Players.



**RAKESTRAW, LILLIAN**  
**51410 W. 8 Mile, Northville**  
 Later Elementary, B.S.

**RATHBUN, MARY**  
**Box 53, Weston**  
 Early Elementary, B.S.  
 I.C.F.

**REDICK, IRENE**  
**10900 Willow, Willis**  
 Early Elementary, State Limited



**REIFEL, WILHELMINA**  
1908 Austin, Ann Arbor  
Early Elementary, B.S.  
Kappa Mu Delta.



**REIMAN, DONALD**  
608 Hibbard, Jackson  
Later Elementary, B.S.



**RIVERS, LEON**  
4021 St. Clair, Ypsilanti  
Industrial Arts, B.S.  
Omega Psi Phi, Industrial Arts  
Club.

**ROBERTSON, MARIE**  
10147 Central, Romulus  
Later Elementary, B.S.



**ROCK, JOHN**  
5654 Kingsbury, Dearborn  
Jr.-Sr. High School, B.A.  
Baseball, Pi Gamma Mu.



**ROEDER, ALICE**  
115 E. 8th, Monroe  
Early Elementary, B.S.



**ROGG, RODNEY**  
Pontiac  
Jr.-Sr. High School, A.B.  
Natural Science Club.



**ROLFE, BARBARA**  
1505 W. Poterson, Flint  
Early Elementary, B.S.



**ROWE, DONNA**  
619 W. Maplehurst, Ferndale  
Physical Education, B.S.  
W.R.A., Physical Education Club.



**RUYLE, DAVID**  
5596 Springfield, Detroit  
Later Elementary, B.S.  
Kappa Phi Alpha  
Senior Class Treasurer, Men's  
Union.



**SAMUEL, MAUREEN**  
Davisburg  
Business Education, B.S.  
Pi Omega Pi, Business Club, Math  
Club, Choral Union, King House  
Council, W.R.A.



**SAVAGE, DAVID**  
Arkona Rd., Milan  
Social Work, B.S.





**SCHAFFER, DALE**  
 208 Woodward, Ypsilanti  
 Physical Education, B.S.  
 Physical Education Club, Kappa  
 Phi Alpha.

**SCHALGE, ALVIN**  
 Akron, N. Y.  
 A.B.  
 Stoic Society, Chemistry Club, Bas-  
 ketball, Kappa Phi Alpha.

**SCHALGE, MARILYN**  
 4455 Warren, Flushing  
 Jr.-Sr. High School, B.S.  
 Theta Lambda Sigma, Natural  
 Science Club, Stoic Society.



**SHELLINGER, RICHARD**  
 405 Ainsworth Circle, Ypsilanti  
 Pre-Medical, B.S.

**SCHLOFF, CHARLES**  
 336 S. Melborn, Dearborn  
 Later Elementary, B.S.  
 Drama Club, Sigma Alpha Delta.

**SCHMITT, IRMA**  
 Jamestown, N. D.  
 Special Education, B. S.



**SCHULER, LUAN**  
 660 Strawberry, Dundee  
 Early Elementary, B.S.  
 Lutheran Students.

**SCHWARTZ, DONNA**  
 348 Eighth, Ann Arbor  
 Business Education, B.S.  
 Pi Omega Pi, Alpha Sigma Tau.

**SEALS, JAMES**  
 9 N. River, Ypsilanti  
 Jr.-Sr. High School, A.B.  
 Phi Delta Pi.



**SEVEY, DONALD**  
 1212 N. Congress, Ypsilanti  
 Jr.-Sr. High School, B.S.  
 Sigma Alpha Delta, Math Club,  
 Band, I.F.C.

**SHAW, WILLIAM**  
 Ypsilanti  
 A.B.  
 C.Y.F., M.S.N.C. Players, English  
 Club, Natural Science Club.

**SHELLEY, BARBARA**  
 18630 Hanna, Melvindale  
 Special Education, B.S.  
 Theta Lambda Sigma, Special Ed-  
 ucation Club.



**SHULER, SARAH**  
Detroit

Library Science, B.S.  
English Club, Drama Club, Stoic  
Society, Choir, Sigma Sigma  
Sigma.

**SLICK, CATHERINE**  
16177 Baylis, Detroit

Jr.-Sr. High School, A.B.  
Women's League, Student Council,  
Aurora, Math Club.

**SLIVA, RAYMOND**  
Detroit

Jr.-Sr. High School, A.B.  
Sigma Alpha Delta, I.F.C., Choral  
Union.



**SMITH, ANN**  
100 Clarence, Belleville  
Early Elementary, B.S.  
English Club.

**SMITH, DONALD**  
7810 Neckel, Dearborn

Industrial Arts, B.S.  
Delta Sigma Phi, Industrial Arts,  
Track Manager.

**SMITH, LAWRENCE**  
100 Clarence, Belleville  
Later Elementary, B.S.



**SMITH, GRANT**  
2837 Wynes, Saginaw

Music, B.M.  
Band, Orchestra, Choir, Choral  
Union, Phi Mu Alpha Sinfonia,  
Alpha Gamma Upsilon.

**SMITH, SHARON**  
1330 Congress, San Bernardino,  
Calif.

Early Elementary, B.A.  
Newman Club.

**SMITH, WAYNE**  
336 Washington, Dundee  
Social Work, B.S.  
Phi Sigma Epsilon.



**SNYDER, ELEANOR**  
4200 W. Buena Vista, Detroit  
Physical Education, B.S., W.R.A.,  
Physical Education Club, Women's  
League, Student Council.

**SOCALL, HERBERT**  
22368 Outer Drive, Dearborn  
Business Administration, B.S.  
Business Club.

**SOLE, MIKE**  
59357 Main, Richmond  
Business Administration, B.S.  
Sigma Tau Gamma, I.F.C., Men's  
Union.





**SOULE, DAVID**  
 460 E. Breckenridge, Ferndale  
 Industrial Arts, B.S.  
 Phi Sigma Epsilon, Industrial Arts  
 Club.

**SOULE, EVELYN**  
 Tyre  
 State Limited  
 State Limited Club, W.R.A.

**STAMY, MARILYN**  
 1323 Northlawn, Birmingham  
 Occupational Therapy, B.S.  
 Kappa Mu Delta, O.T. Club, Jones  
 Dorm Treasurer.



**STAN, AURELIA**  
 1821 Miller, Dearborn  
 Early Elementary, B.S.  
 Cheerleader, Student Court, Aur-  
 ora (1952), Newmon Club.

**STEVENS, BERTIE**  
 320 Normal, Ypsilanti  
 Physical Education, B.S.  
 Physical Education Club, W.R.A.

**STEWART, MARIAN**  
 Fairgrove  
 Later Elementary, B.S.  
 One World Club.



**STUMM, DONNA**  
 516 W. Witherbee, Flint  
 Early Elementary, B.S.  
 Newman Club.

**TAMBLIN, MARTHA**  
 13130 Cloverlawn, Detroit  
 State Limited  
 State Limited Club, Choral Union,  
 Alpha Sigma Tau.

**TAMPPARI, RAY**  
 211 Stone, Ishpeming  
 Natural Science, B.S.  
 Phi Sigma Epsilon, Stoic Society.



**TARR, BARBARA**  
 33 Florenton, Rochester, N. Y.  
 Occupational Therapy, B.S.  
 O.T. Club, Theta Lambda Sigma.

**TAUBITZ, ANNE**  
 Greenbush  
 Art, B.S.

**TAYLOR, BILL**  
 3018 Elizabeth, Wayne  
 Business Administration, B.S.



**TEMPLE, PAUL**  
2568 Carson, Detroit

Physical Education, B.S.  
Kappi Phi Alpha, Men's Union,  
Physical Education Club.



**TERRY, BILLIE**  
1380 Erving, Willow Run Village  
Later Elementary, B.S.

**TESKE, SHIRLEY**  
208 N. Democratic, Tecumseh

Early Elementary, B.S.  
Sigma Nu Phi, W.R.A., King  
House Council.

**THAYER, KATHRYN**  
310 Unadella, Pinckney

Early Elementary

**THIELEN, ROBERT**  
7264 Davison, Davison

Business Education, B.S.  
Phi Delta Pi.



**THOMPSON, DIANE**  
117 Summit, Ypsilanti

Early Elementary, B.S.  
Kappa Mu Delta, W.R.A.

**THOMPSON, KENNETH**  
117 N. Summit, Ypsilanti

Industrial Arts, B.S.  
Zeta Chi Sigma, Industrial Arts  
Club.



**TILLMAN, VIVIAN**  
11007 Craft, Detroit

Occupational Therapy, B.S.  
O.T. Club, I.C.F.

**TOWER, LYMAN**  
32509 Livingston Ct., Wayne

Pre-Medical, A.B.  
Kappa Phi Alpha, Natural Science  
Club, Chemistry Club.

**TOWNS, ROBERT**  
2314 Cumings, Flint

Jr.-Sr. High School, A.B.  
History Club, Pi Gamma Mu.

**TOWNSEND, VARD**  
755 Highland, Lincoln Park

Social Work, B.S.  
Alpha Gamma Upsilon, Wesley  
Foundation.



**TREPP, WALLACE**  
320 N. Normal, Ypsilanti

Industrial Arts, B.S.  
Industrial Arts Club.



**TROJAN, BARBARA**  
14922 Philomene, Allen Park  
Early Elementary, B.S.

**TROTHEN, MARGOT**  
1100 Elmwood Ave, Jackson  
State Limited

**TSCHIRHART, CARL**  
178 E. Main, Milan  
Business Administration, B.S.  
Phi Sigma Epsilon, Basketball.



**VALAIKA, JANICE**  
765 Pine, Plymouth  
Early Elementary, B.A.  
Theta Lambda Sigma, English  
Club, Newman Club.

**VALLANCE, JAMES**  
4042 Saline, Ann Arbor  
Business Administration, B.S.  
Zeta Psi (U. of M.)

**VanLENTE, DONNA**  
484 N. State, St. Joseph  
Later Elementary, B.S.  
Stoic Society, Student Council,  
Delta Sigma Epsilon, Band, Normal  
News.



**VanORDEN, PHYLLIS**  
818 Maumee, Adrian  
Early Elementary, B.S.  
Pi Kappa Sigma, A.C.E., Natural  
Science Club, Library Club.

**VanPATTEN, MURIEL**  
34935 Ash, Wayne  
Art, B.S.  
Sigma Nu Phi, Canterbury Club,  
Panhellenic, Orchestra.

**WALDECKER, AVIS**  
391 Joy, Plymouth  
Later Elementary, B.S.



**WALKER, BARBARA**  
333 Mulholland, Ann Arbor  
Physical Education, B.S.  
Dance Club, Physical Education  
Club, Cheerleader.

**WALKER, DOUGLAS**  
509 E. Liberty, Ann Arbor  
Recreation, B.S.  
Phi Sigma Epsilon, Student Council.

**WALTER, GERALDINE**  
6347 Coleman, Dearborn  
Early Elementary, B.S.  
Catalina Club.



**WARTH, JULIE**  
 1507 Roseland Ave., Royal Oak  
 Early Elementary, B.S.  
 Theta Lambda Sigma, Women's  
 League Exec. Board, Jones Hall  
 Ad Board.



**WATERMAN, LOUVA**  
 43493 Reservoir, Plymouth  
 Loter Elementary, B.S.

**WATSON, JOAN**  
 40 E. State, Coldwater  
 Physical Education, B.S.  
 W.R.A., Physical Education Club.

**WECKSTEIN, STEPHEN**  
 204 25th, Canton, Ohio  
 Business Administration, B.S.  
 Normal News, Business Club.



**WESTPHAL, JUANITA**  
 2085 Vivian, Monroe  
 Early Elementary, B.S.

**WESTROPE, ARDETH**  
 1687 Darien Ct., Willow Run  
 Village  
 Occupational Therapy, B.S.

**WHALEY, RUTH**  
 16115 Westbrook, Detroit  
 State Limited



**WHITE, PATRICIA**  
 428 S. Grove, Ypsilanti  
 Art

**WHYTE, LOIS**  
 18453 Sorrento, Detroit  
 Early Elementary, B.S.  
 Koppa Mu Delta, A.C.E.

**WILCOX BARBARA**  
 519 Fairview Circle, Lincoln Park  
 Jr.-Sr. High School, B.S.  
 M.S.N.C. Players.



**WILLES, ELLEN**  
 514 E. Kingsley, Ann Arbor  
 Loter Elementary, A.B.

**WILLET, EDSSEL**  
 24427 Winona, Dearborn  
 Business Administration, B.A.

**WILLIAMS, ARTHUR**  
**511 Merrill, Birmingham**  
 Business Administration, B.S.  
 Business Club.



**WILLIAMS, CHARLES**  
**109 Ferris, Ypsilanti**  
 Business Administration, B.S.



**WILSON, WALTER**  
**639 Dubie, Ypsilanti**  
 Jr.-Sr. High School, B.S.  
 Chemistry Club.



**WISCHER, RONALD**  
**7117 Lisbon, Detroit**  
 Physical Education, B.S.  
 Physical Education Club, Koppa  
 Phi Alpha, I.F.C.



**WOODHOUSE, ARTHUR**  
**31634 Eckstein, Warren**  
 Physical Education, B.S.  
 Football, Phi Delta Pi.



**WOOMER, SARAH**  
**1780 Allard, Grosse Pointe Woods**  
 Early Elementary, B.S.



**WRIGHT, SHIRLEY**  
**16467 Manning, Detroit**  
 Early Elementary, B.A.



**WUESTNICK, EARL**  
**364 S. Wing, Northville**  
 Later Elementary, B.S.



**ZANDER, DOROTHY**  
**1923 Marlowe, Plymouth**  
 Music, B.M.  
 Bond, Orchestra, Choral Union.



**SENIORS WHOSE PICTURES DO NOT APPEAR:**

**MASON, STEWART**  
**1799 Parker, Detroit**  
 Business Education, B.S.

**WILES, ERNEST**  
**21719 Olmstead, Dearborn**  
 Junior-Senior High, B.S.  
 Koppa Phi Alpha, History Club.

**BUBY, ELAINE**  
**27105 Palmer, Royal Oak**  
 Junior-Senior High, B.A.  
 English Club, History Club.

**KRATZMILLER, RUTH**  
**113 N. Ingalls, Ann Arbor**  
 Later Elementary, B.S.

**NANCE, NARDI**  
**1208 McIntosh, Flint**  
 Junior-Senior High, B.A.  
 Choir

**INNES, JEANETTE**  
**Snover**  
 Early Elementary

**CRAIG, ELIZABETH**  
**114 Church, Milan**  
 Later Elementary, B.S.

**STROBEL, DOROTHY**  
**406 N. Lane, Blissfield**  
 Occupational Therapy, B.S.  
 O.T. Club.

**BOYD, ROBERT**  
**224 N. Summit, Ypsilanti**  
 Physical Education, B.S.  
 Koppa Phi Alpha, Phys. Ed. Club,  
 Football Team (Captain).

**KOZA, DONALD**  
**34865 Goddard, Romulus**  
 Business Administration, B.S.  
 Debate, Normal News, Pi Koppa  
 Delta, Delta Sigma Phi, Pi Gamma  
 Mu.



# *Activities*

Homecoming

Christmas Party

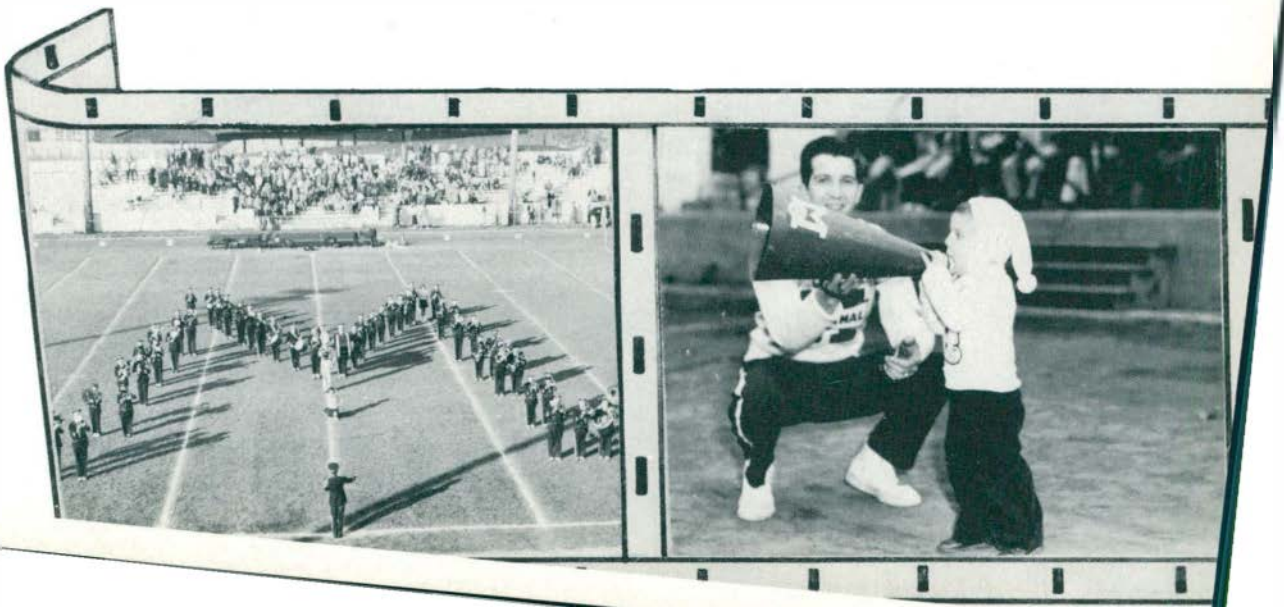
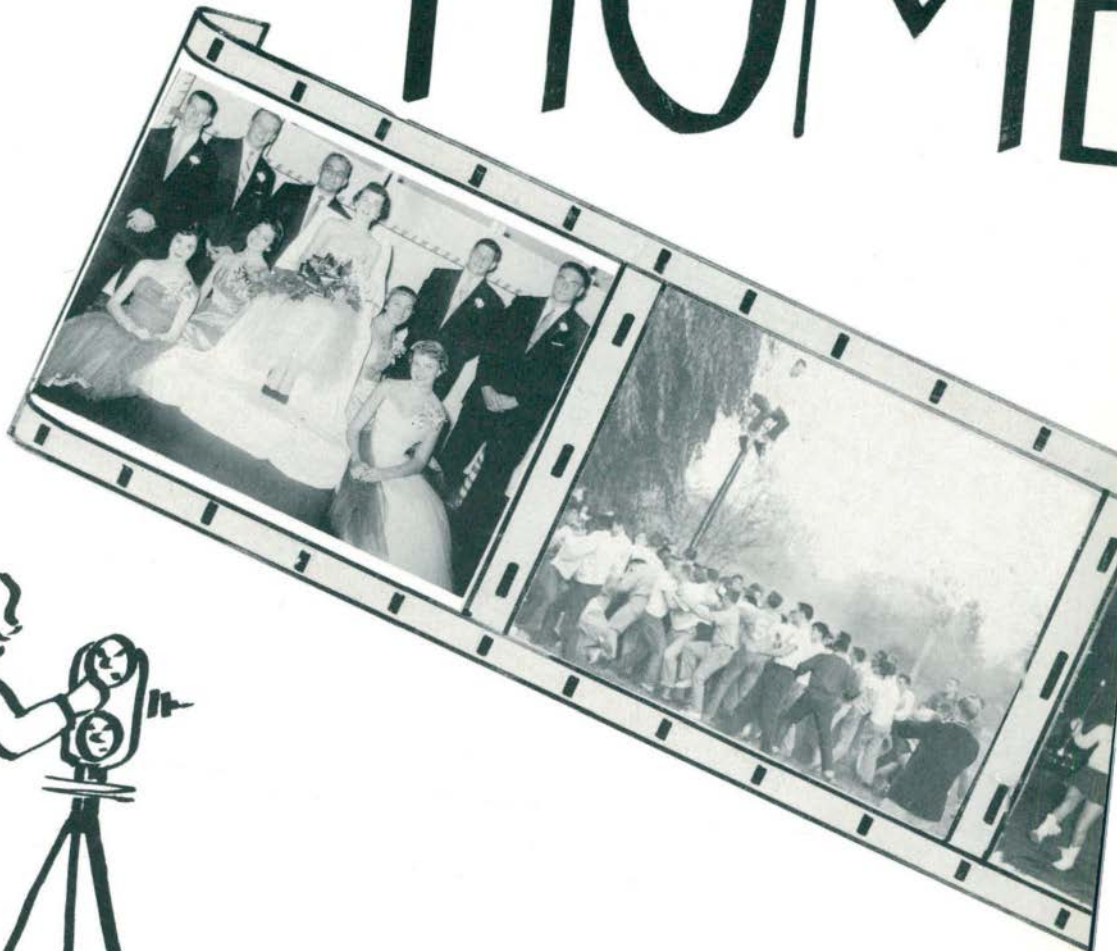
Dorm Activities

J-Hop

Commnity Service



# HOME





# COMING 1953



# NORMALL





**Party!**

**Party!**

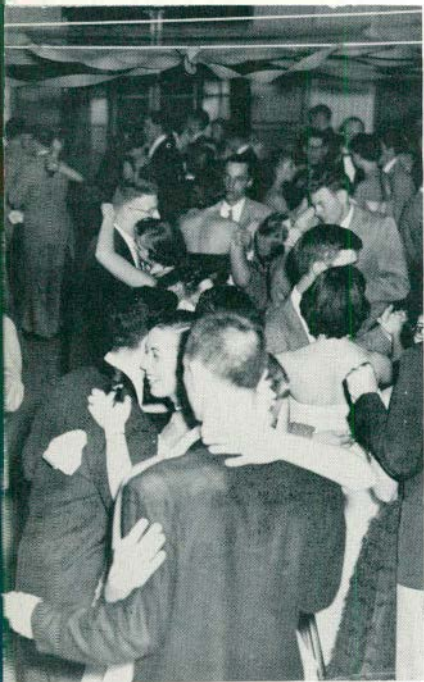
**Party!**

It seems that activities in the girls' dorms this year centered around their costume parties, open houses and formal dances. However, it seems to be agreed by many of the girls that the bring-your-own-cup-and-food-and-come-down-to-our-room affairs were the most fun of all.









H



O



P



**C  
O  
M  
M  
U  
N  
I  
T  
Y  
  
S  
E  
R  
V  
I  
C  
E**



The Women's League Community Service program offers students opportunities for pre-student teaching laboratory experiences in schools and community agencies in Ypsilanti.

