

1955

AURORA

The 63rd. Edition

Published by the student body
of Michigan State Normal College

Phyllis Neuman, Editor
Violet Cushnack, Business Manager
Jane VanderMeer, Activities Editor
Shirley Sole, Art Editor

*Photography by Rosemary Lawrence
and the Audio-Visual Department*



CONTENTS

Dormitories.....	9
Pierce.....	15
Science Building.....	25
Arts Building.....	29
Pease.....	35
Welch.....	41
Library.....	49
Rackham.....	53
Roosevelt and Lincoln Schools.....	57
Starkweather.....	61
Gymnasium.....	73
Field House.....	82
McKenny Hall.....	93
Homecoming.....	137
Seniors.....	143
Index.....	175

WE DEDICATE



Dr. Adelyn Hollis

This year we are proud to dedicate the 1955 Aurora to you, Dr. Adelyn Hollis for the fine job you are doing as social activities director on our campus. You share the successes of our social events because it is on you we depend for much of the know how of organizing them. For this we wish to show our appreciation.

We want you to come to think of this book as much a part of you as a part of us because you have participated in so many of the activities which it depicts.

So sit back, relax . . .and remember 1954-55 with us. We hope you enjoy it.



The 1955 Aurora is much more than an accumulation of printed pages and pictures. Into its publication have gone the hopes and aspirations of the students.

It will serve as a continuing reminder of the great and lasting traditions which center about college life. In the years to come it will be a source of valuable information. It will keep alive the happy memories of today. Time is stopped through the miracle of pen and camera.

We are proud of the fine achievement of the Aurora staff. Each one is deserving of commendation for a task successfully completed.

Eugene B. Elliott, President



The warm smile of Dean Susan B. Hill welcomes the many women who go to her office each day to seek timely advice for their problems.

"Bingo" Brown, Dean of Men, is one of the most beloved figures on our campus. He has such an enthusiastic school spirit and unlimited faith in our "alma mater" that it cannot help but rub off on the rest of us.





Students who need advice on class programs keep our Dean of Administration, E. R. Isbell, very busy.



Dean of Professional Education, Earl Mosier, is a man one should get to know well, especially if one is entering the teaching field.

Our Pledge

Ypsi, sacred Alma Mater, to your name we shall be true,
Ever marching on to victory, we'll stand by to see you thru.
Softly floating on the breeze, verdant green with white of snow,
This our banner we will carry in our hearts wher'er we go.

Huron's Fight Song

Hurons, Hurons, Hats off to thee!
Fight! Fight! Fight for M.S.N.C.
Shout to the sky the Huron's War-cry
The bravest we'll defy!
Hold that line for old green and white!
Loyal sons come show your might.
Fight! Fight! for M.S.N.C. and VICTORY!



dorms

Dorm Councils



Brown

ROW 1: L. Cunningham, G. Griffin, B. Dinsmore (secretary), D. Kleinsmith (vice-president), E. Guido (president), E. Bossenberry, and Mr. F. Lamiman (Head resident).
ROW 2: G. Wolfe, J. Brown, G. Conachen, F. Rivkin, J. Lepak, G. Zitny, D. Sloan.



Goodison

ROW 1: E. Bakhaus, D. Karstetter, J. Chadbourne, L. Ostrander, J. Robinson, J. LaCrosse, and T. Scott.
ROW 2: M. Stelzer, C. Floyd, J. Chiravola, N. Greenhoe (president), D. Noffsinger, K. Clark, G. Potts, P. Breuninger, S. Smith.
ROW 3: B. Haynes, A. Fahey, V. Williams, A. Irish, S. Hillis, L. Marley, Miss Carson (Head resident), Miss Jones (Head resident), C. Fantow, B. Waldorf, J. Hays, B. Peterson.



Jones

ROW 1: S. Sutton, J. Armstrong, S. Husted, J. Tragge, M. Roe, J. Blackford.
ROW 2: J. Zimmerman, J. Ford, J. Blashill, Mrs. Nobles (Head resident), C. Evans (president), Miss Hyde (Head resident), P. Fisher, J. Roeser, and R. King.
ROW 3: D. Rosenbusch, P. Eslinger, J. Thomson, M. Hloffman, P. Jones, G. Verhoeven, B. McDonald, B. Geils, E. Andre, and B. Waters.



King

ROW 1: E. Butler, G. Annas, J. Scherer, M. Masters, D. Gianelli.
ROW 2: L. McKay, M. Hixon, W. Beal (president), C. Mocerri, N. Greene.
ROW 3: Mrs. Whitney (Head resident), G. Schlabit, L. Perry, S. Thomas, M. Wischow, Mrs. Trumbull (Head resident).



Munson

ROW 1: F. Marvin, Mrs. Smith (Head resident), T. Shara, Mrs. Kelley (Head resident), and R. Valentine.
ROW 2: R. Diaz, K. Cogar, G. Yates, W. Sobeski, M. Lichtenstein, W. Moore, R. Forth, R. Hagelstein, C. Michael.
INSERTS: C. Jewett, C. Irwin.



A Dormitory contributes to Homecoming

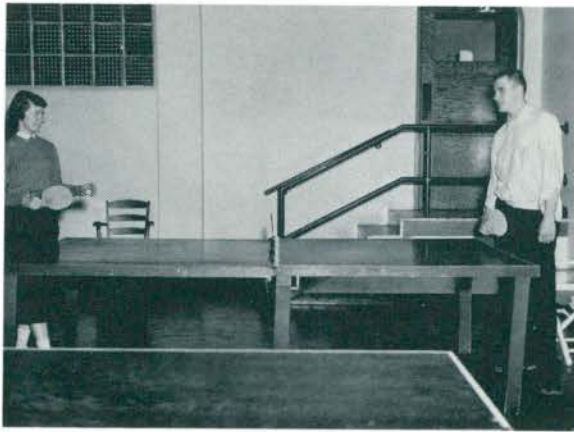


After all the work is done there's still time for dancing and dining. To the left a little dancing after a successful program during Open House.

Any thing can happen! To the right, an early pre-Christmas breakfast catches the dormitory darlings letting their hair down—or shall we say keeping it up.



What would dormitory life be like without a date? Better yet, what is dormitory life like when Betty-Coed does have a date with her favorite Joe College! ! !



There's time for a little fun.



After ping-pong a little television.



And of course, there's time to study.

Date Life



Time out for a coke!



And then "Good-bye"

In the Dormitory



That is—a kiss "good-bye"



Life in the dormitory isn't complete without the thrill of working together.

Tree trimming at Munson

Open houses and entertainment in the dormitories.



All during the year teas, open houses, and parties add to the life of Joe College and Betty Co-ed.

An abstract graphic design featuring several thick, black, hand-drawn lines and shapes on a light blue background. The lines are irregular and intersect to form various geometric and organic forms. A prominent vertical line runs down the right side, while other lines create a sense of depth and movement. The overall style is minimalist and expressive.

ierce



ROW 1: N. Drake (Secretary-Treasurer), H. Falahee, C. Williamson (President), E. Goings, R. Pate.
ROW 2: J. Au, T. Mansour, L. Pritchard, W. Beal, C. Fantow, A. Burris, S. Gleiser.

Mathematics Club

The Mathematics Club is open to anyone with a special interest in mathematics. Its purpose is to broaden the students' knowledge of mathematics and to provide fellowship with others of similar interests. It also offers an opportunity for the student to become better acquainted with the faculty.

This year's activities included a panel discussion on student teaching, a discussion of probability, a discussion of the calendar system, reports by students of famous mathematical problems, and the annual party.

The officers for the year were Chuck Williamson, President; Theresa Gormley, Vice President; Nella Drake, Secretary-Treasurer; and Claire Fantow, program chairman. The officers were assisted by Mr. Hilton Falahee, the club sponsor.



ROW 1: I. Stanton, J. Wolter, J. McIlrath, D. Benton, S. Kurowicki.
 ROW 2: J. Malin, N. Drake, D. Larsen, G. Wessel (Faculty Sponsor), E. Tyrrell, J. Dwyer, R. Jensen.
 ROW 3: B. Greene, D. Davis, R. Arlen, W. Mead, R. Robertson, T. Alford, R. Savich, N. Basile, F. Taft.

Forensic Organization

The Debate Squad participated in the M.I.S.L. Novice Debate Tournament at Albion College in November. Novice debaters were: B. Caputo, S. Kurowicki, J. Malin, and D. Wenk. They debated on the college topic: "Resolved: That the United States should extend diplomatic recognition to the Communist Government of China."

M. Larson and W. Mead represented Normal in the M.I.S.L. Extempore Speaking Contest at Calvin College in December. M. Larson ranked first in the preliminary round of the contest.

D. Benton, M. Donley, N. Drake, S. Kurowicki, E. Love, and J. McIlrath represented Normal at the M.I.S.L. Discussion Festival held at Wayne University in January. They discussed the college topic: "How Can Our Educational System Best Meet The Needs Of Our Society."

W. Mead, placed third in the State Peace Extempore Speaking Contest at Alma College in February. D. Davis, B. Greene, D. Arlin, and J. Wolter represented Normal in the M.I.S.L. Debate Tournament held at M.S.C. in February. J. Wolter and B. Greene were ranked excellent.

Normal debaters, working in conjunction with the Bureau of Social Services, have presented demonstration debates and discussions in five high schools to an audience of over a thousand.



ROW 1: S. Haddix, M. O'Toole, C. Kahlhagen (Vice-President), M. Bade, M. LaLonde, M. Popp.
 ROW 2: G. Fama, A. Proctor, K. B. Hester (Advisor), R. Chowen (President), M. Wilson (Secretary), R. McCulloch (Treasurer), J. West, R. Chowen.
 ROW 3: P. Tisch, B. McDonald, A. Westfall, A. McSherry, J. Lake, G. Robinson, M. Broge, K. Rooke.

State Limited Club

The State Limited Club had a successful year which included special meetings, guest speakers, and friendly get-togethers. The club has been under the guidance of a new sponsor, Miss Kathleen B. Hester, who assisted the officers for the year—RoseMary Chowen, president; Carol Kohlhagen, vice-president; Marlene Wilson, secretary; and Ruth McCulloch, treasurer.

The traditional activities in which the club engaged were: the fall picnic at which time the new members were welcomed, the Christmas party, the spring picnic, and the last event of the year, the State Limited tea honoring those graduates of the two-year course.



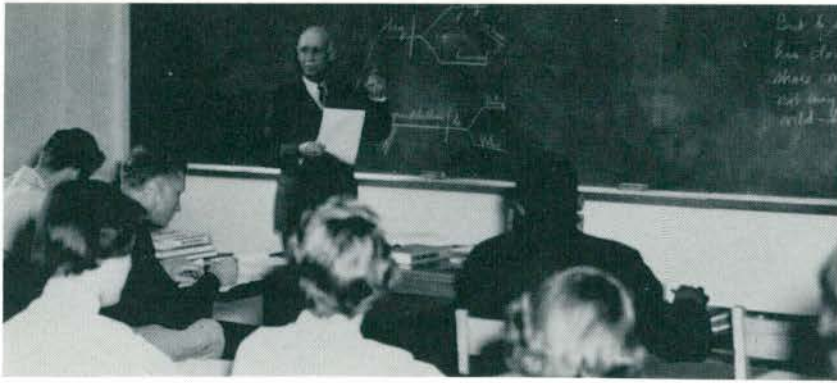
ROW 1: B. Vandecar, T. Durhesneau, G. Zimmermann, S. Pryce, M. Fillmore.
 ROW 2: C. Conklin, M. Foster (Advisor), L. Marley (Pres.), J. Chiravola, A. LeDuc, M. Con-
 stas, E. Beach.
 ROW 3: L. Kalitta, C. Rufus, D. Ethridge, L. Kinsey, L. Thibideau, S. Rosebrough, G. Turner.

English Club

The purpose of the English Club is to provide a medium for establishing a closer relationship between the students and faculty in English, as well as those interested in English language and literature. These interests are enlivened through discussions, outings, lectures, and creative writing.

The outings of this semester included trips into Detroit and Ann Arbor. They were supplemented by follow-up meetings and reviews. Entertainment in the form of folk songs and ballads and music of Shakespeare's time by the Music Department and the English faculty, was enjoyed.

Officers for the 1954-55 season were: Lillian Marley, President; Joan Chiravola, Vice President; Arlene LeDuc, Secretary-Treasurer. Dr. Milton Foster is the club sponsor and advisor.



Let's diagram an easy sentence.



*Counseling guides
our ambitions*



Even the pros relax!



Guess who's next?



E. Meeks, Dr. Nist, N. Greenhoe, J. Chiravola, P. Neuman, B. Madson.

Lambda Iota Tau

The Delta Chapter of Lambda Iota Tau, national honorary fraternity for students of English and foreign literatures, has been active on the M. S. N. C. campus for a year and a half.

At the spring initiation the chapter received Dr. Marion Magoon of M. S. N. C. and Dr. Austin Warren of U. of M. as honorary members.

The Delta chapter acted as host to the National Convention which was held at M. S. N. C. on May 14. Most chapters of the Tri-State region were present at the meeting presided over by Dr. John Nist, faculty moderator of the Delta Chapter.



ROW 1: Mr. Grant Wessel (Faculty Advisor), T. Alford, D. Larsen.
ROW 2: D. Davis, D. Benton, N. Drake, R. Jensen, R. Arlen.

Pi Kappa Delta

The purpose of Pi Kappa Delta is to encourage public speaking in colleges by extending formal recognition to those students who achieve unusual excellence in intercollegiate contests. The students who become proficient in intercollegiate debate, oratory or extemporaneous speaking may become candidates for membership. The chapter at M.S.N.C. is active in stimulating and sponsoring many campus speech activities.

The officers for this year were: Thomas Alford, president; Ruth Jensen, secretary; Daniel Larsen, treasurer; and Grant H. Wessel, faculty advisor.



ROW 1: P. Neuman, D. Danford, D. Wenzel, C. Peters.
ROW 2: C. Evans, W. Beal, A. Fruin.

Kappa Delta Pi

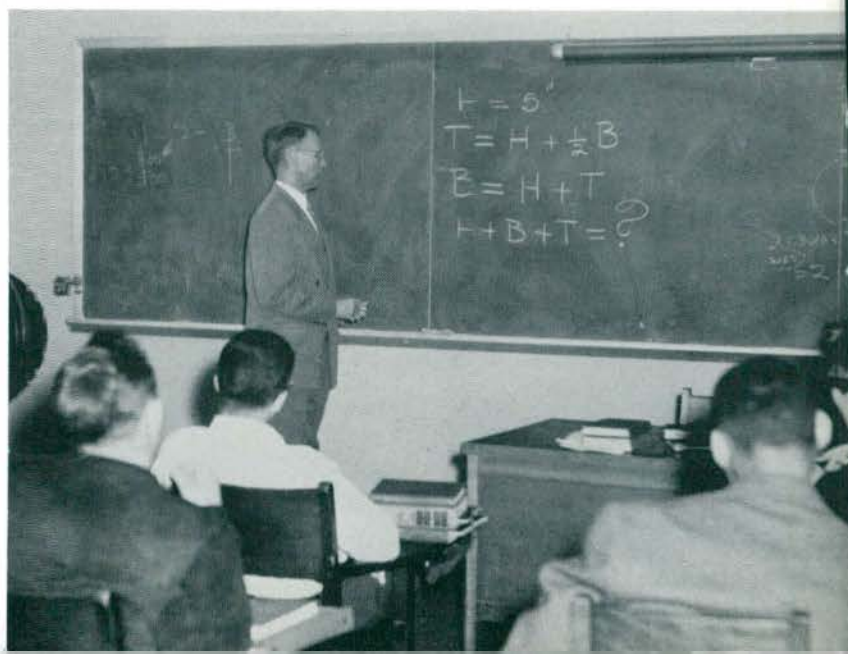
A signal honor to an upperclassman is election to Kappa Delta Pi, second largest honorary society in the world. Initiative, scholarship, and leadership are the criteria used in choosing its members. For nearly thirty-four years, Pi Chapter has been active on the campus seeking to encourage in its members a higher degree of devotion to social service and achievement in educational work.

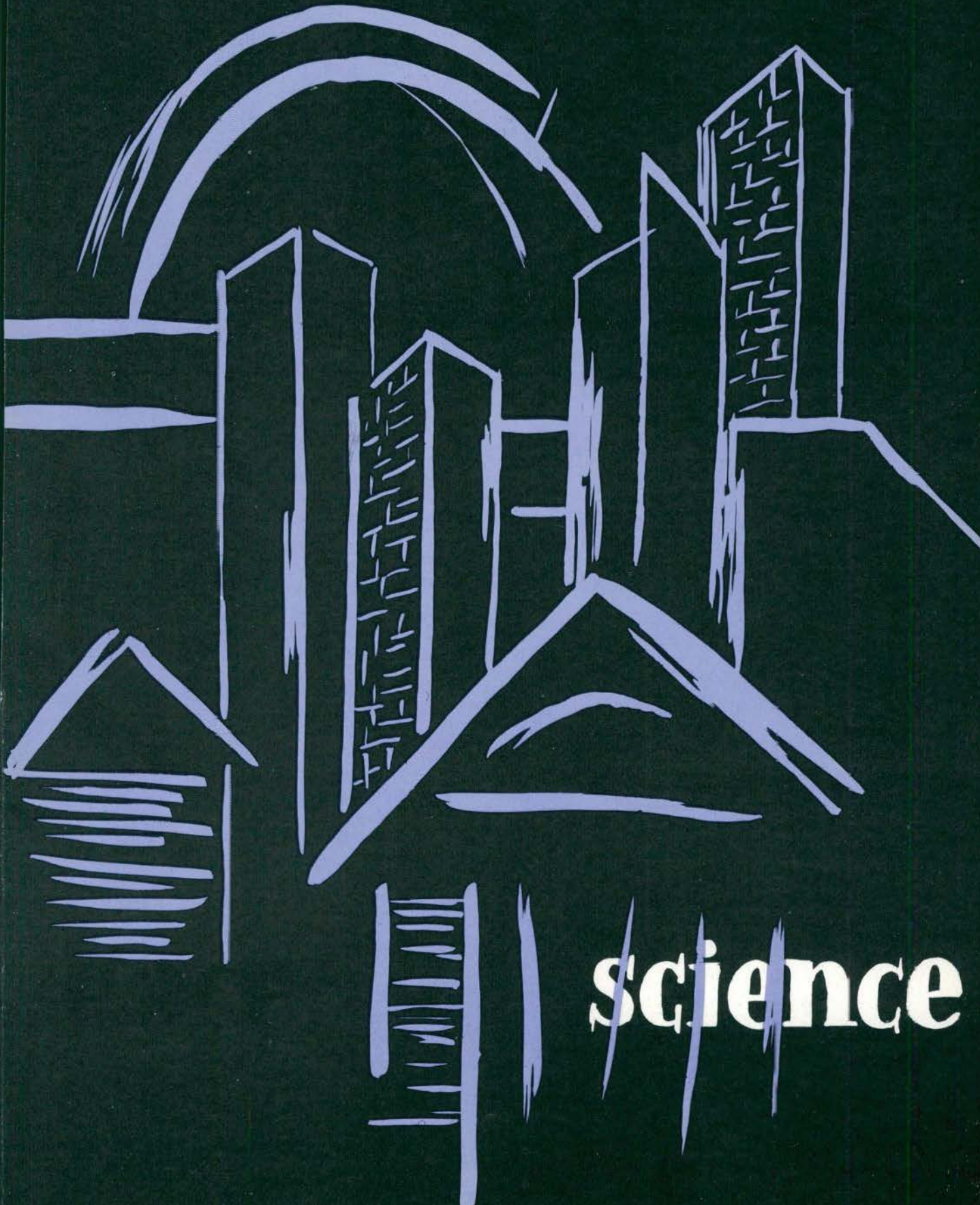
The officers for the year were: Donald Danford, president; David Wenzel, vice-president; Phyllis Neuman, secretary; Leona Ostrander, treasurer.

Math department figuring the lunch bill.



Three way love affair $H + B + T = ?$





science



ROW 1: W. Stanley, B. May, M. Sinden, A. Eshaki, B. Watts, V. Easterling, J. Ellis, J. Armstrong.
ROW 2: W. Stiles, P. Brundage, M. Carr, P. Clark, T. Gormley, C. Hartje, D. Hartman, W. Cole, J. Sellers, E. Lamkin, R. Loam.
ROW 3: D. Tzoannos, H. Soo, D. Simonds, A. Burris, A. Eaglin, J. Mills, C. Rufus, B. Smith, E. Berkich, T. Rutila, J. Holzimmer, H. Pattenuade.

Chemistry Club

The Chemistry Club, this year, as in the past, has taken an active part in campus life. It has participated in such all-college functions as the Christmas Party and the Leadership Clinic.

Besides guest speakers at the meetings, the Chemistry club holds many discussion groups. It also has an annual dinner in January and an Alumni Dinner in April.

The president of the club this year was Carolyn Hartje. Dr. Carr was the Faculty Advisor.



SOMETHING must be interesting!



What should we cut up today?



Can you give me a hint?



ROW 1: B. May, M. Cook, C. Kohlhaben, P. Lang, M. Carpenter, D. Picard.
ROW 2: B. Appleton, B. Eppler, D. Watson, D. Ernst, P. Milliman, B. Crawford.
ROW 3: P. Ernst, M. Hukill, Dr. Loesell, Mr. Grether, Dr. Johnson, Dr. Wallace, Dr. Curtis, W. Appleton.

Natural Science Club

The Natural Science Club, under the sponsorship of Mr. David Grether, strives to promote a greater interest in science and to encourage students to see the importance of science in both teaching and everyday living. The club carried these goals out through a variety of topics and activities. These activities have included discussions, slides, and field trips. This year was opened with an annual Science Club Outing at Kensington Park.

The officers for this year are: President, Bob Hawkins; Vice-President, Barbara May; Secretary, Bill Laubengayer; and Treasurer, Barbara Crawford.



arts

The

1

9

5

5

Aurora Staff



Phyllis Neuman
Editor



Violet Cushman
Business Manager



Shirley Sole
Art Editor



Doreen Picard
Clubs and Honoraries
Editor



Jane VanderMeer
Activities
Editor



Mary Lou Lemmer
Sorority Editor



Earl Steinhart
Fraternity Editor



Lee Ostrander
Co-Senior Editor



Rick Wilgus
Co-Senior Editor



Florence Ambrose
Academic Editor



Zanola Bailey
Social Editor



Jerry Zitny
Sports Editor



Kathy Northrup
Typist



Lorraine Defer
Typist

Make sure you rule those exactly right.

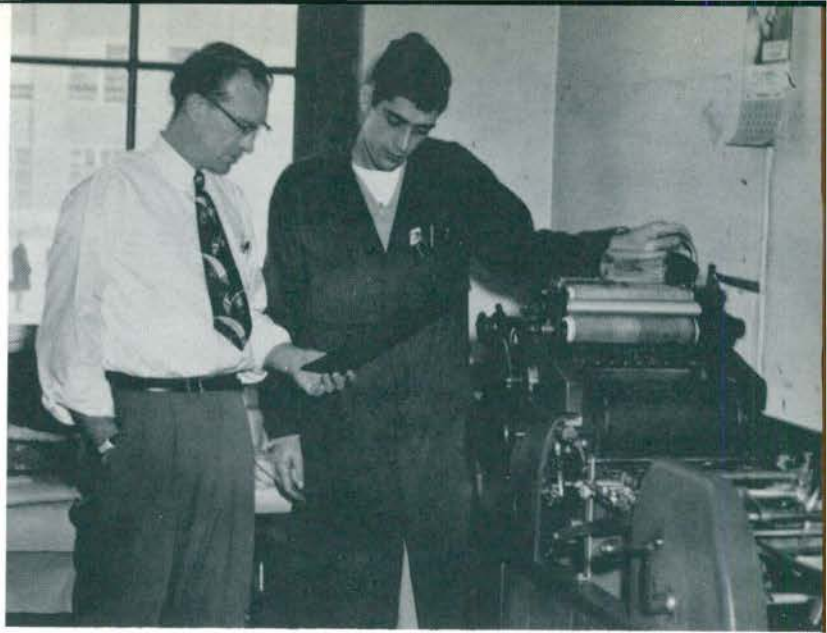


I know I put that girl's receipt somewhere!

Busy, busy, busy day!



Well, what do you think?



Modeling?



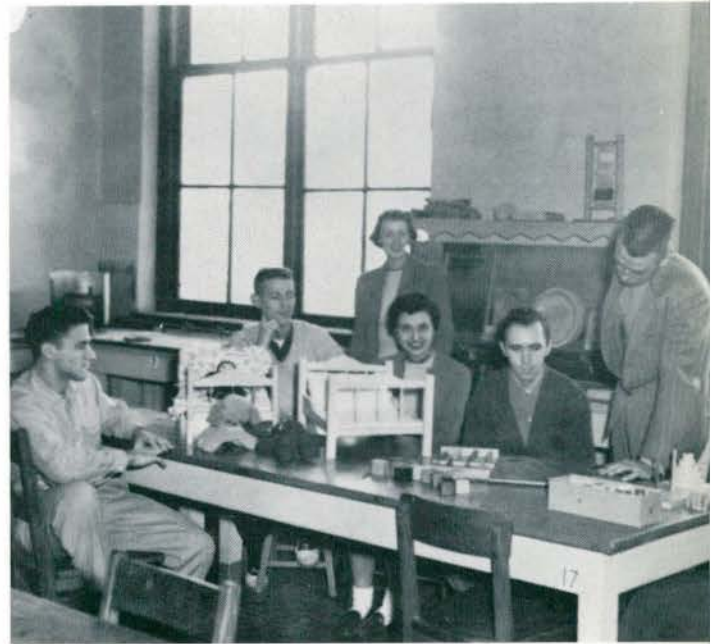
Turn it back to here.



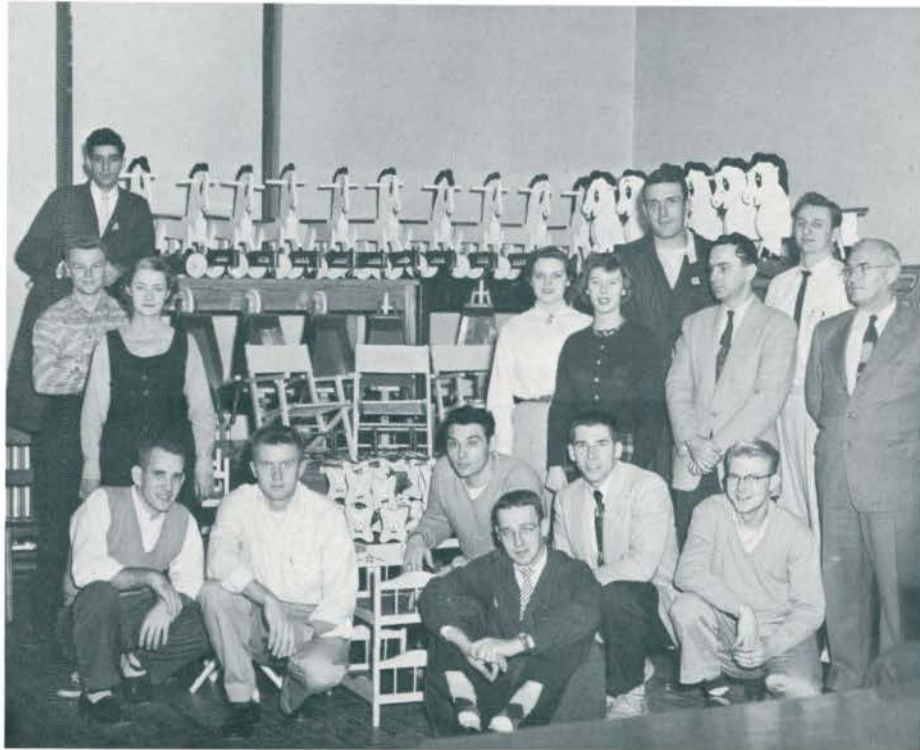
May I suggest?



A fundamental form



All work, no play



Industrial Arts







M.S.N.C. Marching Band



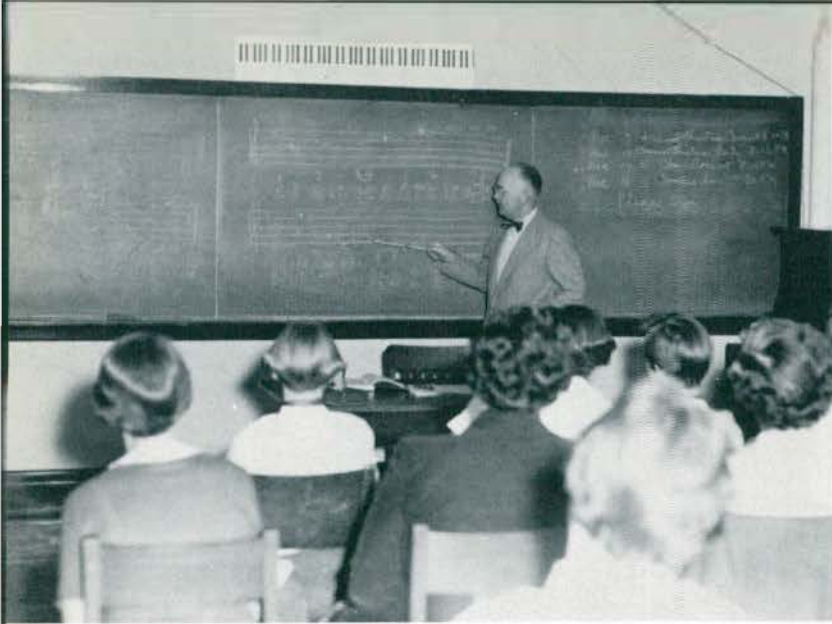
S. Brown, J. Holden, C. McManigal, A. I Harrison, B. Heckmann.



Choral Union and Choir



College-Civic Orchestra



Do, re, mi, fa



Music! Music! Music!





ROW 1: M. Gilliland, P. White, J. Hansen, E. Zoeplitz, S. Campbell, M. Geiger.
ROW 2: M. Constas, L. Janicki, B. Magary, J. Kavie, F. Baughan, S. Donegan.

Mu Phi Epsilon

Epsilon Lambda Chapter of Mu Phi Epsilon, National Music Sorority, was established in the spring of 1950. The purpose of Mu Phi Epsilon is "The recognition of scholarship and musicianship, and the promotion of friendship within its sisterhood".

Some of the activities of the year included: Entertaining the Ann Arbor Alumni group; participation in a district conference in Toledo, Ohio; singing at a meeting of the Garden Club of Ypsilanti; a Birthday Tea celebrating the fifth birthday of the sorority; and an All American concert on March 20, 1955.

The officers for the past year were, Joanne Hansen, president; Shirley Ann Campbell, vice president; Phyllis White, recording secretary; Joann Kehrer, corresponding sec.; Evelyn Zoeplitz, treasurer; Saieb Miller, historian; Peggy Geiger, chorister; Evelyn Pyle, warden; Lois Ann Innes, chaplain; and faculty advisor, Miss Dorothy James.



ROW 1: H. Wilson, J. Purcell, B. Zander, F. Thompson, C. Dittmar.

ROW 2: C. McManigal (secretary), Mr. Riley (advisor), J. Manley (treasurer), B. Woodworth (president), A. Blunt (vice-president), R. Stallard, R. Blank.

ROW 3: P. Baldrige, C. Bergman, J. Parr, T. Smith, N. Logan, R. Cook, E. Stratelak.

Phi Mu Alpha Sinfonia

Phi Mu Alpha, National Professional Music Fraternity, is composed of students active in musical organizations on campus.

The past year found the group busy as usual with a variety of activities, including participation in the Christmas Sing, the annual All-American Concert in Roosevelt Auditorium and a concert tour to several high schools in the out-lying areas. A program was also presented at the Ann Arbor Veterans' Hospital.

Our social functions included our annual dance and a spring picnic.

Our faculty advisor for the year is Dr. Maurice W. Riley.



welch



ROW 1: R. Cuny, B. Gaylord, B. Robinson, A. Meyer, S. Moilanen, E. Weldon.
ROW 2: J. Zizzi, W. Cox, P. Callahan, T. Geboski, J. Meyers, Mr. Lotz (Advisor), N. Stenko, K. Leacox, J. Maenza.
ROW 3: T. Fox, J. Linklater, N. Tucker, G. Payne, B. Mulvany, N. Anderson, J. Schlachter, R. Peake, G. St. James, R. Morrow, L. Haas.

Business Club and Pi Omega Pi

The Business Club began its activities during the first week of the semester with their annual fall picnic. It also took charge of the card games at the All-College Christmas Party.

Our other activities have been field trips and club parties. We were visited at meetings by speakers who gave ideas about the business future of college graduates.

Spring activities included the Spring Banquet and election of new officers.



ROW 1: J. Eschenburg, M. Manley, K. Quigley, J. Speas, N. Hettinger, N. Passfield, M. Smith .
ROW 2: Miss Kelly, E. White, Miss Burson, A. Devendorf, A. Height, M. L. Lemmer, Miss Underbrink.
ROW 3: C. Briggs, B. Pierce, M. Milne, D. Hollifield, B. Royse, H. Dudley, G. Robinson, B. Storey, M. Bowen.

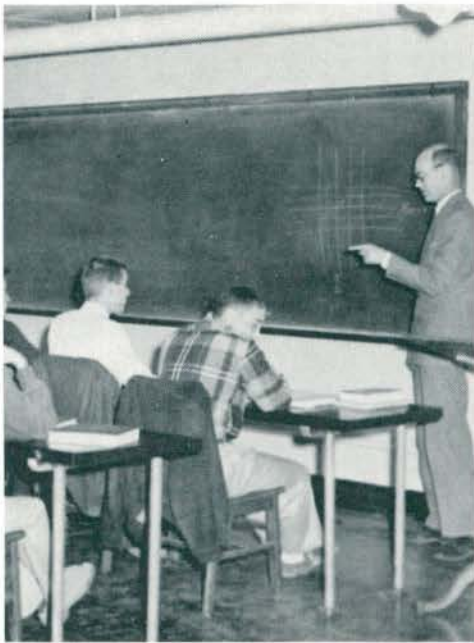
Home Economics Club

All girls taking courses in the Home Economics Department have the opportunity to participate in the many activities sponsored by the Home Economics Club. The club, which is affiliated with the American Home Economics Association and the Michigan Home Economics Association, began this year with a picnic to welcome the new girls. Other activities of the semester included making and selling fruit cakes, making dresses for underprivileged children, and finally, the annual Christmas Dinner at which parents of the members were honored guests. Activities for the second semester included a fun night, a trip to the Michigan Home Economics Association Convention in Grand Rapids, and a farewell party for graduating seniors.

Club officers are Ann Devendorf, President; Antionette Height, Vice-President; Mary Lou Lemmer, Secretary-Treasurer; Eva White, Reporter; Beverly Hugill, State Project Chairman.



Speed test coming up?



*Now this is the way
the land was divided.*



Once upon a time—



Setting the patterns for fashions



ROW 1: T. McKenny, D. Ferguson, J. Levack, C. Wilbanks, J. Hurbis, D. Dunham.
 ROW 2: R. Smoker, A. Donnelly, B. Laubengayer, P. Schneider, R. Bridge, D. Babcock,
 K. Kraus, J. Birnbaum, C. Purcell.
 ROW 3: G. Griffin, J. Greenleaf, R. Wyer, G. Culver.

R. O. T. C.

The ROTC at Normal is now three years old. The corps this year numbers over 400 cadets. September saw the start of the first advanced class, twenty-six juniors who were selected from sophomore candidates. Upon completion of their senior year they will receive commissions in the Officers Reserve Corps. This June the juniors will go to Fort Campbell, Kentucky for six weeks extensive training at summer camp.

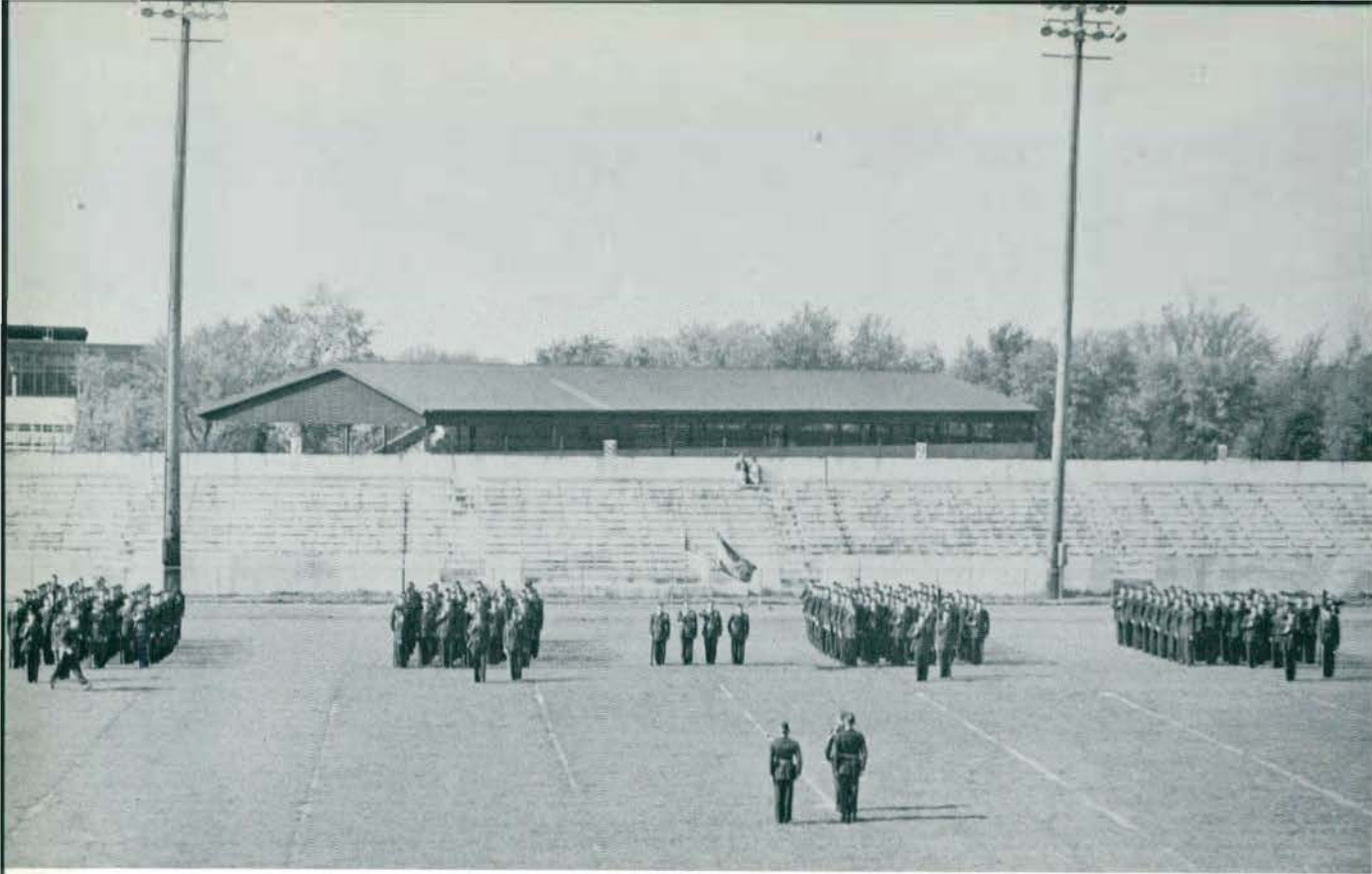
Major Eugene M. Perry Jr. assumed the duties of acting Professor of Military Science and Tactics in September, until the arrival of Lt. Col. William C. Bryan in January. Col. Bryan had just completed a tour of duty in Germany.

Social highlights of the year were again the annual Military Ball and the annual Federal Inspection in May, which was followed this year with a tea dance in McKenny Hall.

The drill team continued its fine work, appearing at Homecoming, the Military Ball, and several competitive matches and parades. The rifle team continued to progress and the ROTC Marching Band was organized.



The Drill Team



The Corps at its best.

The Annual Military Ball.





Federal
Inspection





ROW 1: C. Mastori, F. Shimada, D. Vaughn, E. Kamigaki, L. Cosey, J. Davis.
ROW 2: T. Olmedo, F. Allen, L. Borjas, B. Atkins, E. Love, R. Robertson.

Human Relations Club

The objectives of this organization are to promote better understanding between different groups on the campus of Michigan State Normal College as well as to increase self and social insights through free discussion in an informal, democratic atmosphere. All students enrolled at Michigan State Normal College are eligible for membership.



library



ROW 1: B. Haynes (Secretary-Treasurer), L. Adler (President), C. LaBrew (Vice-president).
ROW 2: D. Emens, S. Romanow, Miss Robinson (Sponsor), B. Lee, M. Staplin.

Library Club

A Book Fair, dinner for the alums, trips to libraries, book reviews, and professional meetings—this is the range of activities sponsored by the Library Club in 1954-55.

The Library Club worked in cooperation with the members of the Roosevelt P.T.A. to present a Book Fair in November at the Roosevelt School. Books for this project were selected and displayed to satisfy reader interest from the pre-school to adult ages.

Traveling activities of the Club included a tour of new schools in the Detroit area, where the newest innovations in libraries were observed, and a trip to the Detroit meeting of the Library Section of the M.E.A. at which authors Marguerite de Angli and Herbert Zims reviewed their latest books. The spring meeting of the Michigan Association of School Librarians held in Jackson was also attended by the group as well as a visit to the State Library in Lansing.

The outstanding social event of the year was a dinner given for the alums February 15. This proved so successful that it was voted to establish the custom of entertaining the alumni at a dinner annually.

The objective of the Library Club is to provide social activities and develop professional attitudes toward future library work. It is open to any student enrolled in one of the basic library science courses.

Members of the Club whose pictures are not included above are: J. Teston, D. Barkus, B. Rumph, A. Hackigan, B. Signor, C. Dickson, J. Dickerson, B. Watts, and D. Osgood.



ROW 1: E. Rodriguez, P. Jesiek, A. Rodrigues, A. Ramirez, N. Orantes.

ROW 2: J. Rima, R. Ruche, Mr. Villegas, B. Nichols, B. Ellis, I. Restrapo, A. Nolan, B. Ostrander.

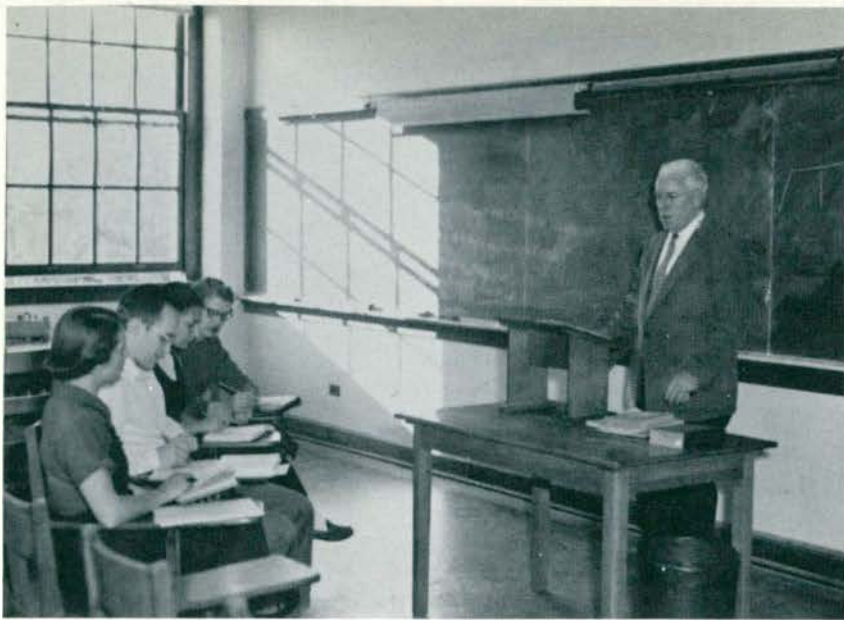
ROW 3: F. Martinez, A. Cortes, R. Cunningham, O. Hidalgo, J. Parra, R. Mayorga, M. Orantes, J. Romero, T. Olmedo.

Centro de Espanol

The Spanish Club, or Centro de Espanol, is composed of students studying Spanish as well as Latin American students enrolled at M.S:N.C. The organization, under the guidance of Mr. Villegas, strives to improve the conversational ability of the students and to further their knowledge of Spanish customs.

A variety of films, several guest speakers, skits, music, and games in both Spanish and English provided entertainment for the bi-weekly meetings.

The president for the year was Barbara Nichols, and the vice-president, Hector Guido. The secretary-treasurer, Barry Ellis, also planned the major part of the social activities which contributed greatly to the success of the year.



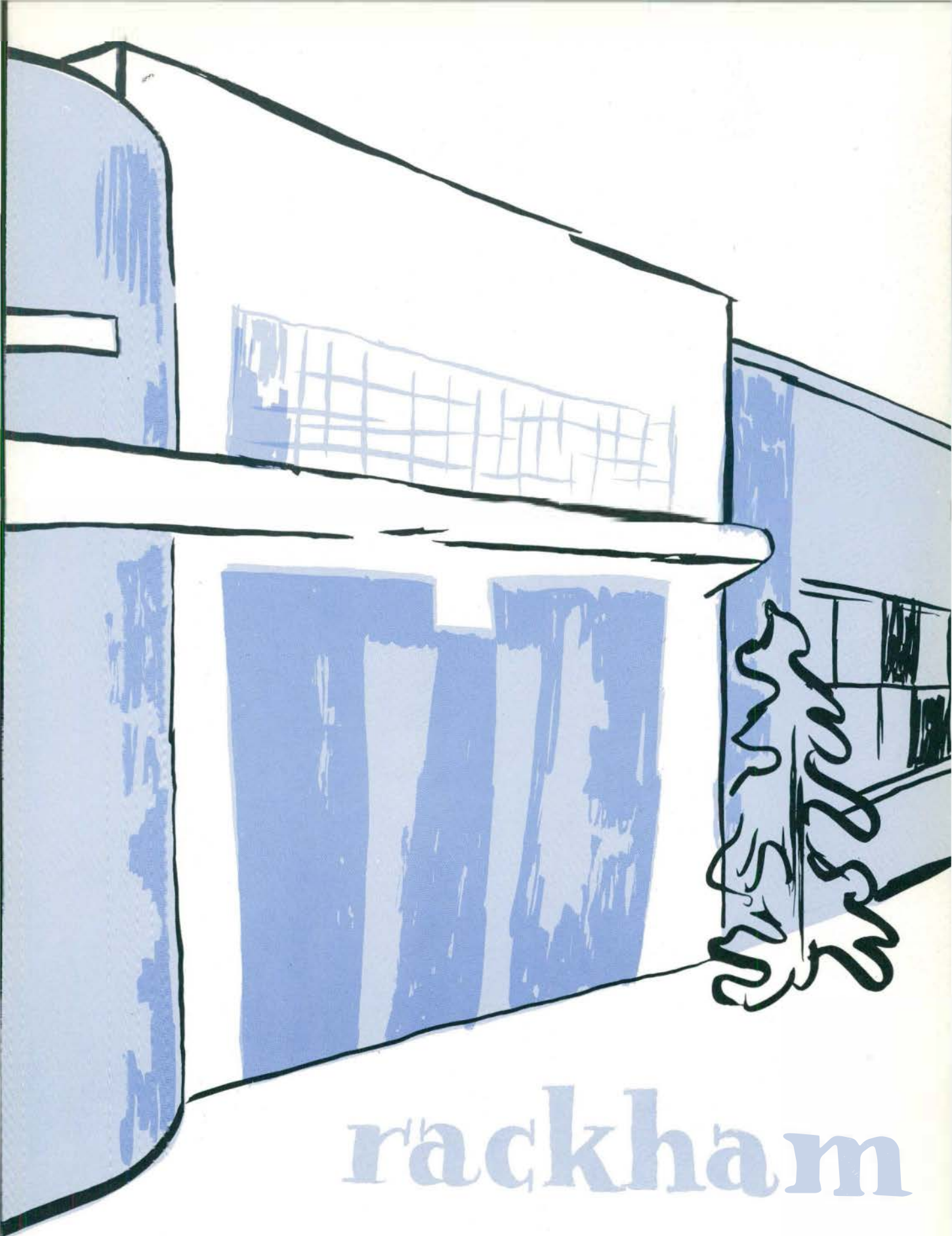
*Le professeur et
les 'etudiantes*



*Deep
in
Study*

Term paper due?





rackham



ROW 1: J. VanderMeer, J. Wasserberger, S. Levine, J. Petzold, C. Blazer, M. Haas, M. Shonk, K. Warnemuende.

ROW 2: L. Shupbach, J. Sato, Miss Holtom (Advisor), D. Smith, P. Meadows (Treasurer), P. Aton (President), G. Stralnic, Mrs. Herrick (Advisor), L. Larson, M. Chase.

ROW 3: P. Hobbs, H. Tanabe, D. Karstetter, B. Lirette, A. Sheetz, N. Tribilcock, J. Smith, C. Reed, A. Hacskaylo.

ROW 4: A. Weintraub, M. Fisher, F. Rosenbusch, P. Lutz, N. Morin, C. Pliska, C. Cocroft, A. Radike, N. Wright, P. Bernhardt.

Occupational Therapy Club

The O.T. Club has had a very active season. The year was opened with a picnic to orient the students to the O.T. Club and their functions. At our bi-weekly meetings we have had speakers telling of O.T., crafts, and other fields related to O.T. At Christmas we gave a program for the children at Rackham and for the patients at Ypsilanti State Hospital.

We had an Easter Bazaar and the profit from this Bazaar enabled us to go to Dearborn V.A. Hospital. We also had a Spring Banquet in honor of our newly elected officers.





Rackham School houses the department of Special Education and Occupational Therapy. Here treatment for the handicapped child is provided, as well as experience for the college students who are majoring in these fields.



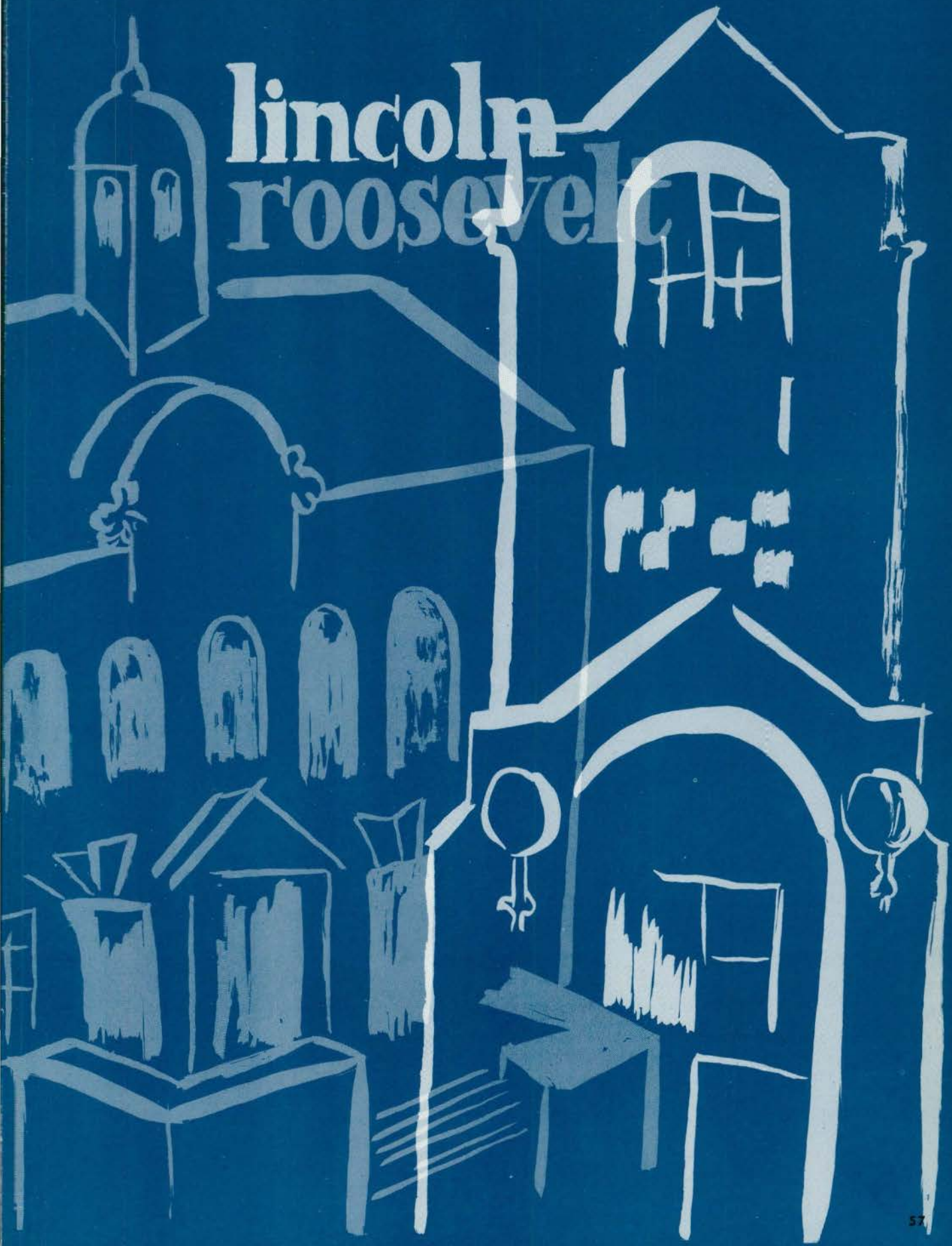
ROW 1: Mrs. Radtke, S. Dell, J. Dwyer, T. Scott, K. Clark, B. Caputo, L. Tyrell, H. Hershey.
ROW 2: S. Ward, M. Moran, J. Raabe, J. Sventko, Mrs. Bentley, Unidentified, R. Tarbutton,
L. Adams.
ROW 3: J. Ethridge, S. Kubicki, B. Wade, D. Larsen, B. Nelson, F. Parker, H. Gregerson.

The Special Education Club

The Special Education Club met once a month during the school year in room 201 in Rackham School. The faculty advisor was Mrs. Bentley. Membership was open to majors and minors in special education.

The club had a very full schedule this year. Some of the members attended the regional convention of the International Council for Exceptional Children at Grand Rapids in November. Members of the club also helped at the state convention of the International Council of Exceptional Children, which was held in Ann Arbor the weekend of March 18 and 19. Another major activity for the club was coordinating the annual Easter Egg Hunt held for the children of Rackham School. Club members took the children of Rackham School to visit the Willow Run Airport. Other activities included filling envelopes for the Easter Seal drive and informal get-togethers.

lincoln roosevelt



R
O
O
S
E
V
E
L
T



Mr. Leonard Menzi
Principal of Roosevelt



Some new found friends.



Dr. Bruce Nelson
Superintendent at Lincoln



Helping to create.

L
I
N
C
O
L
N



ROW 1: W. Hawes, C. Cooper, D. Karstetter, B. Crawford, C. Orr, P. Mann, S. Brodbeck, S. Waterman.
 ROW 2: A. Nelson, D. Bailey (Treasurer), Mr. Work (Advisor), H. Ballou (President), G. Peterson (Vice-president), J. Hazelton, M. Chase.
 ROW 3: J. Geisendorfer, A. Eardley, B. Foley, J. Wittig, M. Fisher, J. Anderson, D. Hayes, J. Simpson, F. Bernhardt, T. Boggs, T. Cousins, J. Greenwood.

M.S.N.C. Players

The school year of 1954-55 marks the M.S.N.C. Players' third season. Membership in the club is open to all students who are interested in any of the many phases of theatre production.

The principle activities of the organization center around the production of plays. Ferenc Molnar's *LILIOM* was presented in Roosevelt auditorium in the spring of 1954. Joe Baunoch appeared in the title role and the other leading parts were taken by Anne Ragen, Donna Cummings, Jacqueline Stein, and Dave Meneghal.

In the fall of 1955 the Players held a highly successful open house in Starkweather Hall. The evening's program included a skit, color slides of past productions, and a summary of the nature and purposes of the club.

Shortly after the open-house the Players presented their fall production of one-act plays. Bill Hawes directed Alice Gerstenberg's *OVERTONES*; Gary Peterson directed William Saroyan's *THE HUNGERERS*; and Noel Coward's *RED PEPPERS* was directed by Joe Baunoch. The three plays provided roles for some fifteen members, and stage-manager Ted Boggs superintended a large backstage crew.

The season of 1954-55 marks the first year of affiliation for the Players with the national honorary dramatics fraternity, Alpha Psi Omega. The M.S.N.C. chapter of this organization has been designated as Pi Omega. The Charter members initiated in the spring included Harold Ballou, Gary Peterson, Arlene Nelson, Dick Bailey, Jack Hazelton, and Bill Hawes.



starkweather



ROW 1: A. Eardley, K. Anderson, R. Atkins, C. Hogle, A. Westfall.
ROW 2: C. Watsen, E. Lentz, K. Santer.

Student Religious Association

The Student Religious Association is an organization for students of all faiths. Its activities center about Starkweather Hall, the campus home of the student religious organizations. The S. R. A. Council is the guiding body of the association consisting of two representatives from each group and is responsible for planning the inter-group activities of a local, national, and international nature.

Its purpose is to promote better understanding and fellowship between the church groups and to encourage participation in the program of the local churches and to sponsor student and faculty attendance at conferences.

Among the activities sponsored was a float in the Homecoming Parade, and an intergroup Christmas Program. Besides this, a weekly coffee hour was held for students and faculty. These took place each Wednesday from 3 to 5 o'clock. During the spring semester the group sponsored a program for a World Day of Prayer. A Square Dance was also held.

The President for the year was Robert Atkins; Mrs. Gladys Erikson and Mrs. Margaret Menzi were the Faculty Advisors.



ROW 1: C. Bates, J. Dickerson, N. Hettinger, W. Bailey, S. Seyferth, M. Slossom.
 ROW 2: B. Atkins, L. Lentz, L. Lipka, R. Hart, D. Myers, C. Hartje, M. MacLennan, A. Foster.
 ROW 3: G. Crowell, J. Nichols, M. Nelson, L. Swartz, B. Watts, M. Ries, M. Fillmore, S. Rosebrough, C. Dittmar.

Inter-Varsity Christian Fellowship

The Inter-Varsity Christian Fellowship is an inter-denominational group open to anyone on the campus.

The general activities throughout the year are Monday evening meetings, prayer meetings, Bible studies, and socials.

This past year the group has had such outstanding speakers as Mr. Gordon Van Wylen from Ann Arbor and Rev. Donald H. Mac Lennan from Hamilton, Ontario. Besides speakers, the group has had panel discussions, a "singspiration", and a film, "Campus in the Woods". The socials of the year have included a hotdog roast, a Thanksgiving Dinner, a bowling party, and others.

The officers for this year were: Danny Myers, president; Ray Banks, vice-president; Dorothy Hart, secretary; and Ralph Hart, treasurer. The advisor is Mr. Grant Wessel.



ROW 1: K. Reske, J. Gilliam, A. Meyer, I. Grunewald, E. Darago, J. Jasper, S. Howath.
 ROW 2: P. Neuman, M. Wischow, Pastor Scheips, D. Memhardt, V. Cushnack, F. Weide, S. Schomaker, S. Eichbrecht.
 ROW 3: D. Wenzel, M. Bluhm, C. Watson, C. Rikley, G. Zimmermann, P. Wolfe, M. Reske, J. Haman, C. Kehrler, G. Schelke, C. Bartz, F. Miron, K. Willnan.

Gamma Delta



*Our
 Christmas
 Party*

Will the meeting please come to order?





ROW 1: A. Westfall, M. Tank, E. Bird, M. Kreft.
ROW 2: Mr. Arthur Earick, J. Gutenschwager, Pastor Yoder, P. Brossia.
ROW 3: S. Friedley, B. Shanklin, B. Grebe, J. Dwyer, B. Seils.

Lutheran Student Association

The Lutheran Student Association is an organization of Lutheran Students (N. L. C.) and friends who are interested in the aims of the group.

Activities for the year included semi-weekly Bible study and discussions led by Pastor H. Yoder, a Christmas party, and group attendance of the Lenten services at Emmanuel Lutheran Church. Several members also attended the retreat at St. Mary's, Ohio.

This year's officers were: president, Paul Brossia; secretary, Shirley Friedly; and Treasurer Jayne Gutenschwager. Mr. Arthur Earick and the Rev. Harley Sipe, pastor of Emmanuel Lutheran Church, advised the group.



ROW 1: D. Jackson, E. Smith, R. Jackson (Advisor), J. Sowers, J. Miller, J. Jackson.
ROW 2: J. McMillan, D. Bilby, E. Tully, A. Burris, Y. Chung, J. Sutton.

Christian Youth Fellowship

Christian Youth Fellowship is a group of Baptist and Congregational students organized for the purpose of promoting Christian Fellowship and spiritual enrichment.

Mr. Robert Jackson has been our sponsor and Jack Miller our president for the past year. Our program centers around weekly Sunday evening vesper services where we meet together to worship, discuss problems of practical, cultural and spiritual significance to young people, hear outstanding speakers, or participate in S.R.A. group programs. Spring semester we devoted several weeks to discussing Religion in the curriculum.

We often have parties or other just-for-fun activities on Friday evenings. Missing from the photo are: W. Shaw, I. Shaw, S. Feters, P. Jackson, J. Armstrong, L. Takequchi, K. Quigley, C. Webb, J. Teston.



ROW 1: E. Rodriquez, S. Pryce, M. O'Toole, N. Ball, J. Kilmark, M. Diegel, K. Krckker, A. Rodriquez.
 ROW 2: L. Toth, J. Bovaire, J. Bozymoski, R. Kennedy, Father Jerome Krieg, B. Schmitt, E. Andre, J. Dubay.
 ROW 3: Y. Rima, P. Pennala, M. Oakes, T. Deucheneu, M. Ausum, M. Munro, J. Dulnaige, B. North, J. Ried, M. Lemmer, S. Husted, E. Kettenstock, J. Breaugh.

Newman Club



ROW 1 D. Sennit, E. Ballor, M. Alice, J. Kavie, J. Breniser, M. Manley, J. Jones, P. Barwinski, S. Haddix.
 ROW 2 B. Fitzgerald, F. Martinez, C. Hogle, C. Dickinson, H. Capriata, T. Gebowski, T. Marshall, M. Kay, S. Leidholdt, J. Mills.
 ROW 3 A. Angelucci, M. Donelly, D. Dossin, G. Coscarrelly, B. Longre, L. Defer, P. Jablonske, J. Johnson, J. Murphy, A. McSherry, N. Orantes, A. Ranirez, A. Bergergoechea.



ROW 1: N. Ford, Rev. Schoolmaster, M. Moran.
ROW 2: Dr. Foster, F. Thompson, B. Gould, C. Hahn.

Canterbury Club

The planning board, using suggestions of its members and of other Canterbury students, plans the meetings and other events sponsored by the Canterbury Club.

The Canterbury Club has regular Sunday night meetings at 7:00 P. M. in McKenny Hall. Also it has a weekly communion service, followed by a breakfast, at 7:00 each Tuesday morning in Starkweather Hall. Any student is invited to attend any one, or all, of these meetings.

Another event, held bi-annually, is the student-faculty dinner, held in the dining room of St. Luke's church.



ROW 1: D. Benson, B. Johnson, L. Ostrander, S. Mills.
ROW 2: R. Fraser, D. Payne, B. Ostrander, D. Kleinsmith.
ROW 3: K. Anderson, L. Prichard, M. Johnson, A. Eardley, T. Smith.

Christian Science

Taking its place among the religious groups on the campus this year is the newly formed Christian Science Organization. Authority for its formation is given under Article XXIII, Section 8 of the Manual of The First Church of Christ, Scientist, Boston, Massachusetts. Such Christian Science Organizations are a part of campus activity in many colleges in the United States and in other countries.

Their purpose is to promote spiritual fellowship among students of this faith, and to provide a time and place where experiences may be exchanged. All students interested in learning about the teachings of Christian Science are welcomed at meetings.

Officers for the year were: Don Kleinsmith, President; Lee Ostrander, Vice-President; Dorothy Payne, Secretary-Treasurer; Keitha Anderson and Amy Eardley, S. R. A. Representatives.



ROW 1: R. Harring, J. Speas, J. Townsend, C. Bates, A. Hendra, A. Jacobs.
ROW 2: R. Atkins, S. Wright, Mr. W. Clyde Donald (Advisor), P. Barns, M. Simons (Faculty Advisor), B. Crawford, W. Rose.
ROW 3: T. McCallum, D. Brown, H. Kelly, J. Schickler, M. Scrivens, J. Steiner, R. Flowerday, G. Alexander, W. Appleton, R. Appleton, K. Santer.

Wesley Foundation

The purpose of the Wesley Foundation is to provide a Christian atmosphere in which young men and women may find opportunities for religious leadership and possibilities for wholesome recreation and fellowship.

The activities of the group include Sunday evening worship services and discussions, study groups, service projects, and Friday evening parties. This spring, prayers and discussions of the United Nations and peace were given. The center of activities is at the Methodist Church and Church House.

The president for the year is Patricia Barns and the faculty advisor is Marion Simons.



ROW 1: J. Dickerson, N. Greenhoe, T. Scott, G. Annos, P. Neuman, J. Valencourt, A. LeDuc.
ROW 2: W. Jamieson, L. Huebler, E. Meeks, B. May, C. Kehrer, L. Ostrander, R. O'Donnell, J. Collins.
ROW 3: R. Eppler, A. Estrella, D. Hartman, B. Lee, Miss Robinson (Sponsor), C. Agre, T. Gormley, S. Friedly, C. Conklin, W. Sobeski.

Stoics

Highlights this year for the Stoics were the Christmas party with Dr. Nist reading poetry, and the annual alumni banquet. The guest speaker at the banquet was Dr. Leland Jacobs from Columbia University.

The Advisor for the society is Miss Margaret Robinson. The officers are: President, Barbara May; Vice-President, Lee Ostrander; Treasurer, Carole Kehrer; Secretary, Edith Meeks; Recording secretary, Bill Woodworth; and Reporter, Elaine Bakhaus.

S
T
A
R
K
W
E
A
T
H
E
R



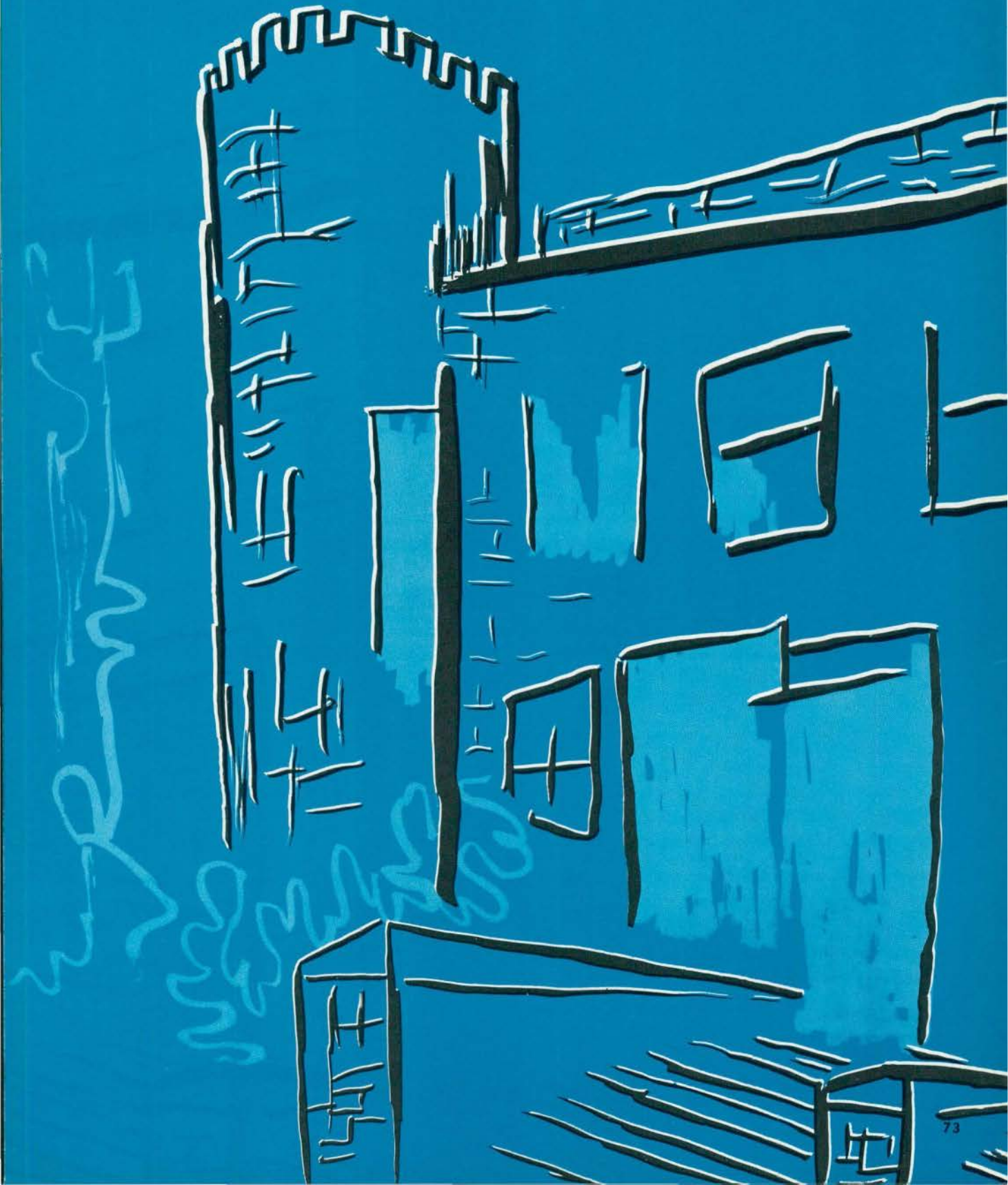
Just a chance to relax and chat for a while, plus the added incentive of free coffee brings many to the weekly SRA coffee hours.

(Above) SRA Council meets.

(Below) Gamma Delta members (Missouri Synod Lutheran Students) keep the coffee and food supply going during an SRA coffee hour.



gymnasium





ROW 1: J. Chadbourne, L. Wesner, D. McIntyre, N. Greenhoe, A. Huges, L. MacDonald, C. Kehrer.

ROW 2: C. Esmen, P. Seavey, J. Anderson (Recorder), D. Coville (V. Pres.), Miss Verda (Advisor), D. Gianelli (Pres.), E. Dennison (Sec.), J. Petzold.

ROW 3: J. Basset, P. Eslinger, B. Nelson, J. Dulmage, B. Sowers, J. Kosky, F. Dimas, S. Kaczorowski, M. Donnelly, A. Hosie, A. Irish, M. J. Benson, J. Helm.

Women's Recreation Association

Women's Recreation Association, one of the most active organizations on campus, had a very successful year in 1954-55. In the fall the group journeyed to Clear Lake Camp for the Athletic Federation of Michigan College Women Convention. In the spring Ellen Dennison and Ann Hosie were elected as delegates to represent the organization at the National Athletic Federation of College Women convention held in Massachusetts.

The club float, with the theme "Farewell all Hallow'n Summer," won third place in the club floats in the Homecoming Parade.

During the Christmas season the club sponsored "House of Skill" where many tried their ability at the all campus Christmas Party. Next came the caroling at Rackham, and Beyer Hospital. At the All-College Christmas Sing, the group chose to sing "Mary's Lullaby".

Spring semester began with the ever popular Co-educational nights. In March came the long awaited Water Show, with advisor Dr. Smith, and in April the graceful Modern Dance Show, with advisor Miss Morris.

In May came two big events, the week-end camp at Mill Lake and the annual W.R.A. banquet where emblems and awards were given out.

In addition to the special activities, W.R.A. also offered team sports, individual sports, playdays and square dance club.

Thanks to the co-operation of Miss Martha Verda, advisor, Dolores Gianelli, president, Diane Coville, vice-president, Ellen Dennison, secretary, Joan Anderson, recorder and the other board members, the W.R.A. has had a very successful year.

W. R. A. at Play



The ocean was never like this.

Wheew—that was close!

Just like shaking hands.





ROW 1: M. Lemmer (Vice-president), Z. Bailey (President), S. Mills.
 ROW 2: S. Seyferth, S. Zimmerman, V. Manning, L. Cosey, M. Liston (Reporter), R. Edwards.
 ROW 3: Miss J. Morris (Advisor), M. Taylor, A. Hughes (Secretary and WRA Representative),
 J. Warren, J. Wasserberger, and C. Glover.

Modern Dance Club

Activities for the Fall Semester included a recital at the Faculty Christmas Party and the Christmas Sing. Other equally important events were participation in the Christmas Dance Concert and a demonstration for the Twenty Club Banquet.

Planned for the rest of the year were a prospective television appearance, several tours for demonstration performances and possibly an informal presentation in the gym. In place of the Annual Spring Concert, was participation in the all-campus musical sponsored by the English Department.





ROW 1: C. Eseman, J. VanGilder, M. Taylor, B. Howell, K. Craig, S. Kaczorowski, J. Chadbourne, R. Huebler.
 ROW 2: L. McDonald, J. Morris, B. Borusch, H. Smith, A. Harris, C. Wixon, G. Montgomery, M. Verda, D. Daly.
 ROW 3: L. Olds, G. Marshall, M. Hershey, J. McCulloch, E. Rynearson, F. Trosko, J. Skala, P. Yanoschik.

Physical Education and Recreation Club



ROW 1: P. Cartlidge, K. Max, S. Davis, P. Ernst, J. Galpin, J. Holden, D. McIntyre, J. Helm, M. Smith.
 ROW 2: J. Anderson, J. Dulmage, D. Coville, S. Zibell, C. Wedding, P. Seavey, P. Kroneck, B. Morris, M. Benson.
 ROW 3: J. Czanko, L. Cunningham, L. Slepski, R. Vanni, R. Tonks, R. Smoker, M. Bluhm, D. Root, H. Goodhue, D. Wenzel.



ROW 1: G. Ostby, E. Bakhaus, D. Schwade, T. Lavoie, E. Lynch, J. Kundrick, D. Vervill.
 ROW 2: P. Curry, L. Tomassini, I. Williamson, M. Janter, D. Bolser, D. Gianelli, B. Bond, P. Deno, L. MacDonald.
 ROW 3: D. Alchin, G. Davidson, H. Minor, W. Graham, G. Coscarelly, R. Gould, R. Becker, R. Pogliano, R. Mittlestat, R. Hagelstein.

Intramural Sports

The Intramural Department this year sponsored an overall sports program for men which included football, softball, tennis, swimming, ping pong, volleyball, badminton, and cross country.

The sports program was divided into two divisions; the fraternities in one division and Brown, Munson, McKenny Hall and the Independents in the other division. The Arm of Honor and Brown IV are the overall sports leaders in their respective divisions this year.

The hard work of the student directors, student managers, Tom Lavoie, Bob Smoker, and Dr. Lloyd Olds produced widespread participation and a program of intensive activity.



It's anybody's ball now.



Tension reigns in a fraternity basketball game — will he or won't he sink it?

Fight! Team, Fight!



ROW 1: J. Helm, P. Ernst, J. Dedoes, M. Cashman, L. Cheek.
ROW 2: B. Hollifield, E. Erickson.

YEA HURONS, FIGHT!

Yes, Hurons—Fight!

Yea Hurons—Fight! Fight!

Yea Hurons—Fight! Fight! Fight!

F-I-G-H-T!

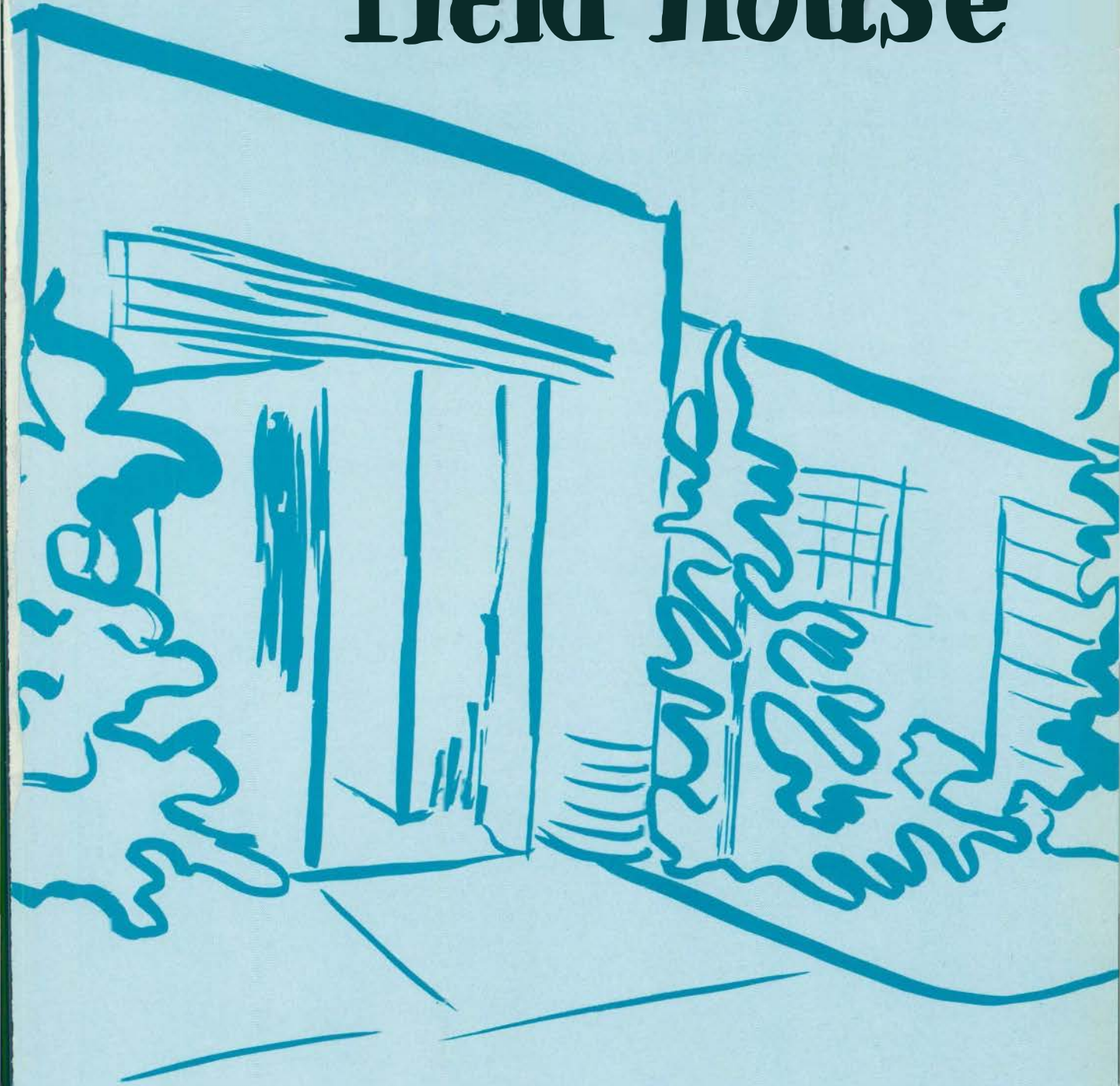
You gotta F-I-G-H-T

You gotta F-I-G-H-T

You gotta F-I-G-H-T

FIGHT! NORMAL, FIGHT!

field house





ROW 1: Line Coach Yanoschik, Campbell, Barnes, Bunce, McCormick, Price, Ritter, Wilkins, Miller, Comfort, Carroll, Daly, Head Coach Trosko.

ROW 2: Keating, Wigner, Washington, Middlekauff, Broad, Captain Manych, Williams, Mosley, G. Brown, Windom, Zizzi, B. Brown, Middlestat.

ROW 3: Basel, McCollough, Pinkowski, Becker, Park, Dickson, Beselnak, Foley, Biddle, Corbett, Nyhus, Vanek, Mawby.



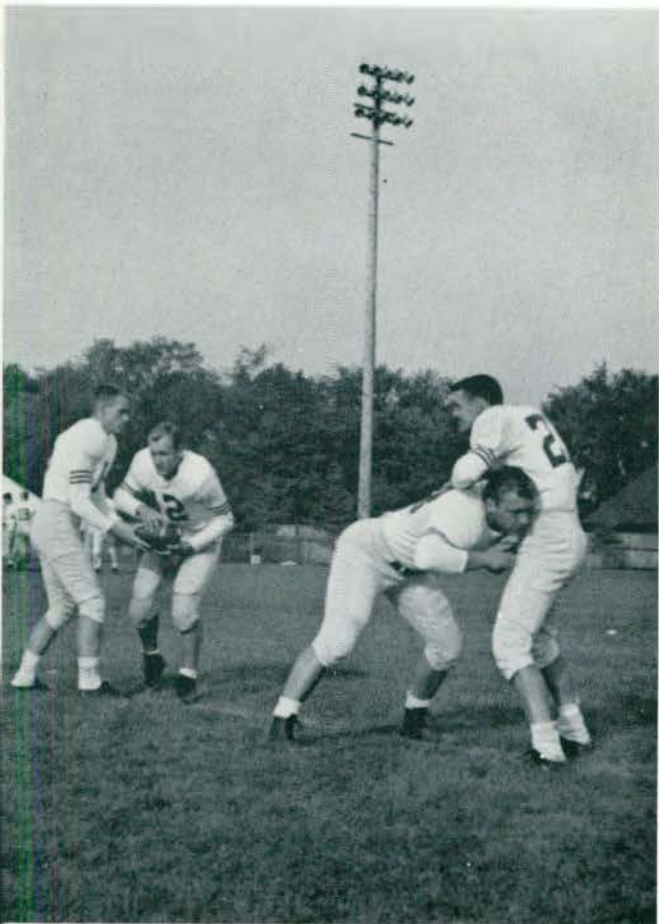
Football

1954 was the most successful football season in over a decade at Michigan Normal. The best team that Coach Trosko has turned out in his three years as head football coach took the field. The Huron eleven finished the season with an 8-1 mark to reign as Conference Co-Champions for the first time. The team finished with a 5-1 conference record and had to settle with a tie for first with their arch-rivals, Central Michigan.

Five Huron players were picked on the All-Conference team. Quarterback, Bob Middlekauff; end, Dick Mosley; and tackle, Barry Basel made first team selections. Halfback Virgil Windom and end Nick Manych made the second eleven. Besides making All-Conference at quarterback, Bob Middlekauff also was named quarterback on the first team of the little All-American selections. Bob received the most valuable player award on the Huron team as well as the IIAC's most valuable player award.

In the past three years the Huron eleven under the coaching of Fred Trosko have compiled an outstanding record of 20 wins, 5 losses, and 2 ties. They have finished third, fifth, and first in the IIAC.

Captain, Nick Manych



M.S.N.C.	19	Hope	0
M.S.N.C.	32	Hillsdale	13
M.S.N.C.	7	Wayne	0
M.S.N.C.	33	Eastern Ill.	0
M.S.N.C.	34	Northern Ill.	0
M.S.N.C.	20	Southern Ill.	0
M.S.N.C.	33	Western Ill.	19
M.S.N.C.	25	Illinois Normal	7
M.S.N.C.	7	Central Mich.	28



Manager John DiCmmandrea, Ken Santer, Dick Wendt, Dave Hissey, Gerald Zitny, Ernie Bennetts, Bob Gould, Captain Bob Rowland, Dave Schultz, and Coach George Marshall. In front of the team are the trophies awarded to the team for their accomplishments; the National Junior AAU trophy is on the left, the IAC trophy is in the center, and the Michigan AAU award is on the right.



Cross Country

This past year Michigan Normal enjoyed the greatest cross country season in a score of years. Although they were forced to settle with a 2-2 season in dual meet competition, the Normal harriers went on to win the Michigan AAU Championship, the Interstate Intercollegiate Athletic Conference Championship, and the National Junior AAU Championship. Coach Marshall calls this year's team "the best I ever coached", and "one of the finest teams Normal has ever produced."

Detroit area athletes made up the bulk of Marshall's winning combination. The team consisted of Captain Bob Rowland of Lincoln Park, Gerald Zitny of Dearborn, Ernie Bennetts of Hazel Park, Dick Wendt of Walled Lake, Bob Gould of Ann Arbor, Dave Schultz of Wyandotte, Ken Santer of Detroit, and Dave Hissey of Detroit.

Since 1929 the Huron harriers have compiled an outstanding record, winning seventy-seven meets while losing only eleven. In addition they have won seven Michigan AAU Championships, four State Intercollegiate Championships, two Central Collegiate towns, and a pair of National AAU Junior Championships, besides their string of four straight IAC victories.

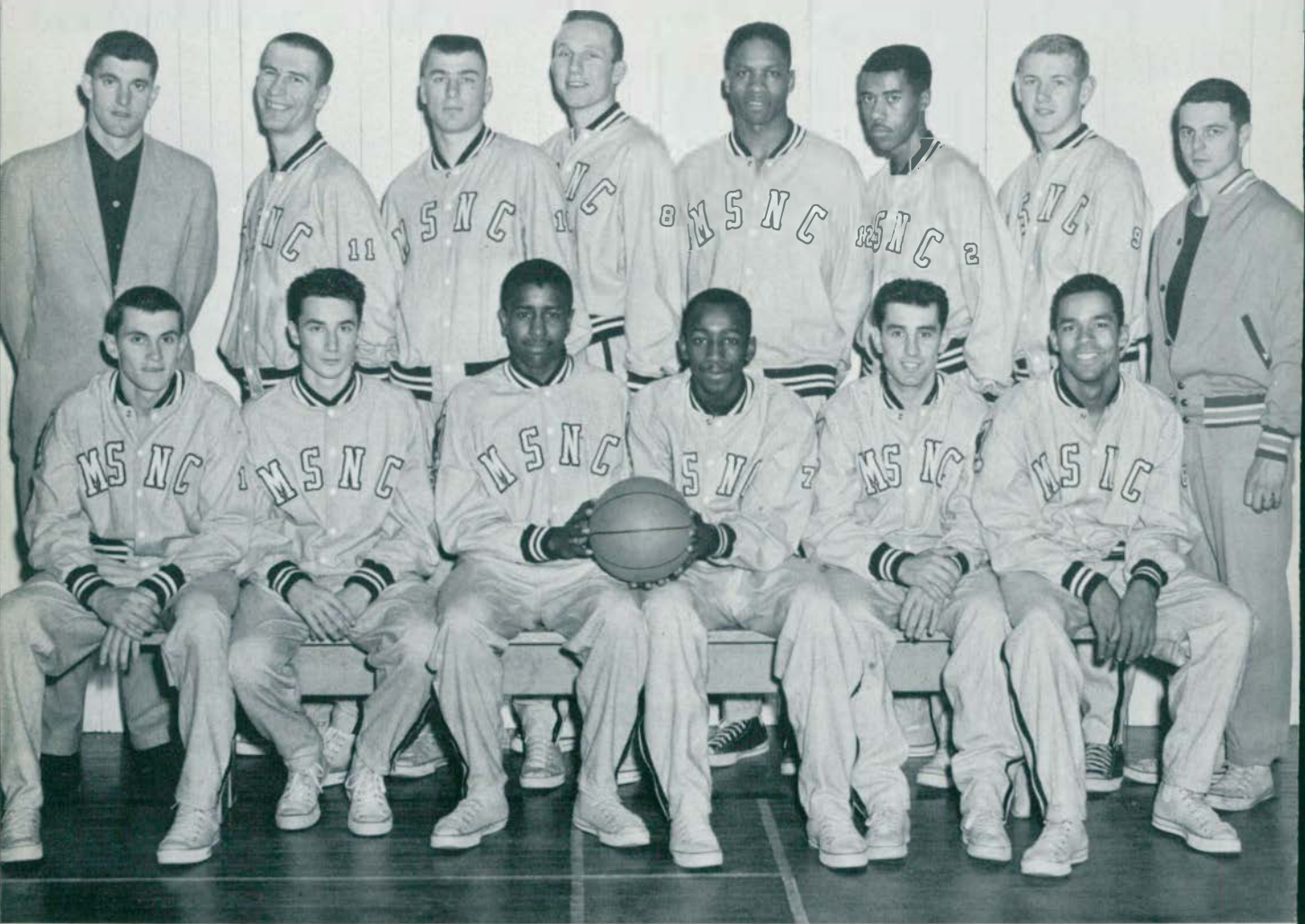
Captain Bob Rowland

Baseball

The Huron baseball team under Coach Bill Crouch finished third in a strong I.I.A.C. conference in '54. Led by pitcher Paul Temple; infielders Earl Bossenberry and Dick Moseley; outfielders Nick Manych and Jim Zickel the team was a tough contender in every game.

As we write this Coach Crouch has eight lettermen returning. Captain Dick Moseley, Jerry Griffin, Joe Lepak and Larry McDonald will take over the infield; while Nick Manych, Cleon Gilliam, Larry Cunningham, and Jim Zickel handle the outfield. Returning pitchers are Hal Goodhue and Jack Lamb.

Many new freshman prospects helped to brighten the picture.



ROW 1: B. Becker, R. Pogliano, C. Gilliam, W. Kirksey, N. Papadakis, C. Jewett, Coach Dave Walerzak.

ROW 2: Coach Jim Scala, J. Czanko, N. Manych, D. Parks, A. Shepard, C. Teaberry, J. Pinkowski.

The M.S.N.C. basketball squad finished one of their most successful seasons in many years. The Hurons finished with an over-all record of 14-8 and came in second in the conference behind a strong Western Illinois team. This was the first year as head coach for Jim Scala.

Outstanding players were co-captains Webster Kirksey, Cleon Gilliam and Nick Manych. Andy Shepard, freshman center, set a new season scoring record.



ROW 1: 11. Carrol, E. Printup, R. Tucker.

ROW 2: B. Perry, B. Middlestat, B. Birkle, J. Pinkowski, M. Groves, Coach Walerzak.

Reserve Basketball





ROW 1: J. Puchey, D. Root, D. Habersham, G. Crowell, M. Blum, G. Davis, J. Birnbaum, M. Pierce, D. Wendt, D. Alchin, E. Bennetts, L. Murry.

ROW 2: P. Yanoschik (Asst. Coach), R. McCall, B. Stranger, D. Hessay, T. Hall, J. Allan, G. Goforth, G. Zitny, F. Tschirhart, J. Francis, G. Marshall (Coach).

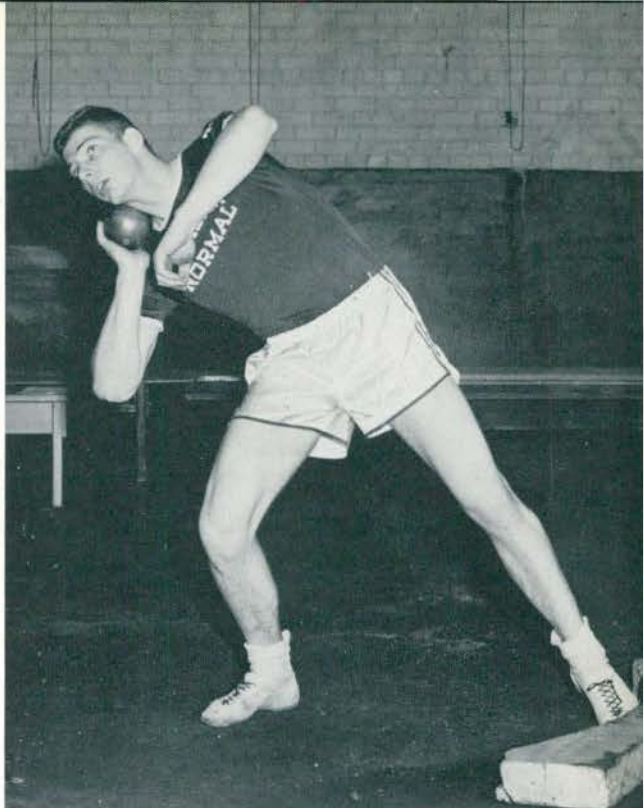
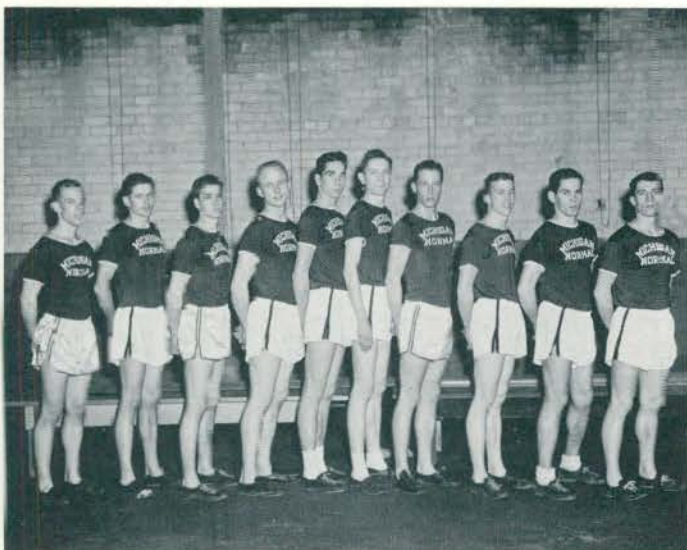
ROW 3: K. Keating, G. Koch, D. Sloan, K. Santer, L. Holly, V. Windom, L. Harding, B. Gould, L. Hughes, D. Schultz, J. Buck.

Track

Conference Champions (since 1949) is the name most fitting for this year's Huron trackmen. Led by Captain Glenn Davis, the cindermen will seek their sixth consecutive conference title. The Hurons have the distinction of winning every conference title since being in the I.I.A.C.

This year the thinclads ran against such nationally famous track powers as Michigan, Notre Dame, Indiana, and Michigan State. Besides these duel meets the trackmen participated in the Drake Relays, Cleveland Relays, Central Collegiates, N.C.A.A., Ohio Relays, Dennison Relays, and the National A.A.U. track and field meet.

Although greatly handicapped by not having proper indoor facilities, coach George Marshall still always manages to turn out a good track team. His record here at Normal has given him the reputation of being one of the best track coaches in the country.

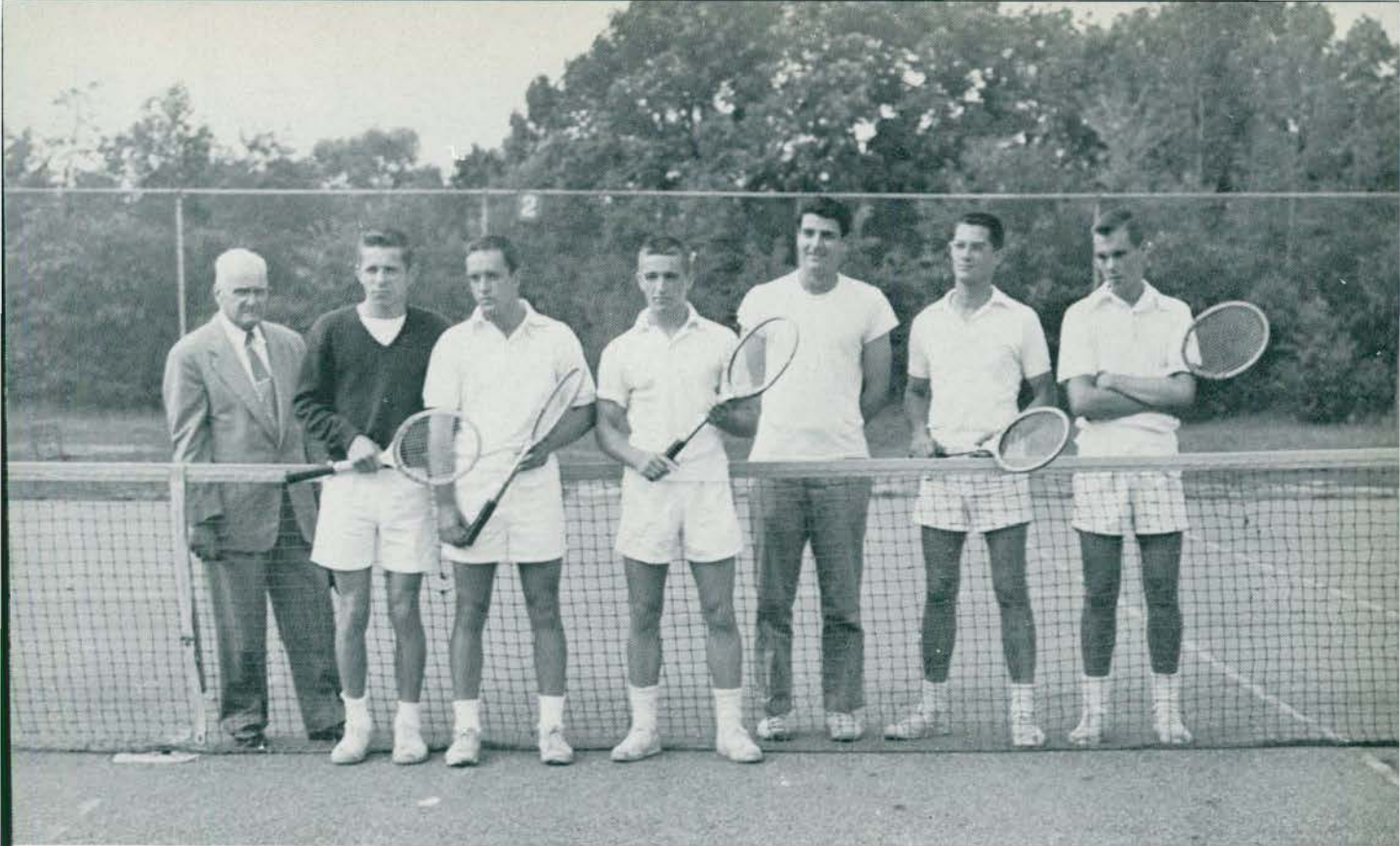


- January 29 Michigan A.A.U. Ann Arbor
- February 5 Michigan State East Lansing
- February 12 Open
- February 18 Indiana Bloomington, Ind.
- February 26 Michigan Ann Arbor
- March 5 Central Collegiates Notre Dame
- March 12 Central Michigan Mt. Pleasant
- March 19 Dennison Relays Granville, Ohio
- March 25 Cleveland Relays Cleveland, O.

Golf

With Major Eugene Perry of the R.O.T.C. as head coach, the linksmen managed to take fourth place in the I.I.A.C. Conference in 1954. Don Wendling, Joe Frauenheim, Paul Callahan, Dick Daly, and Bud Carson were the returning lettermen.

The Hurons had matches against Bowling Green State University, Toledo University, Central Michigan College, and Hillsdale College. They also took part in the Conference meet.

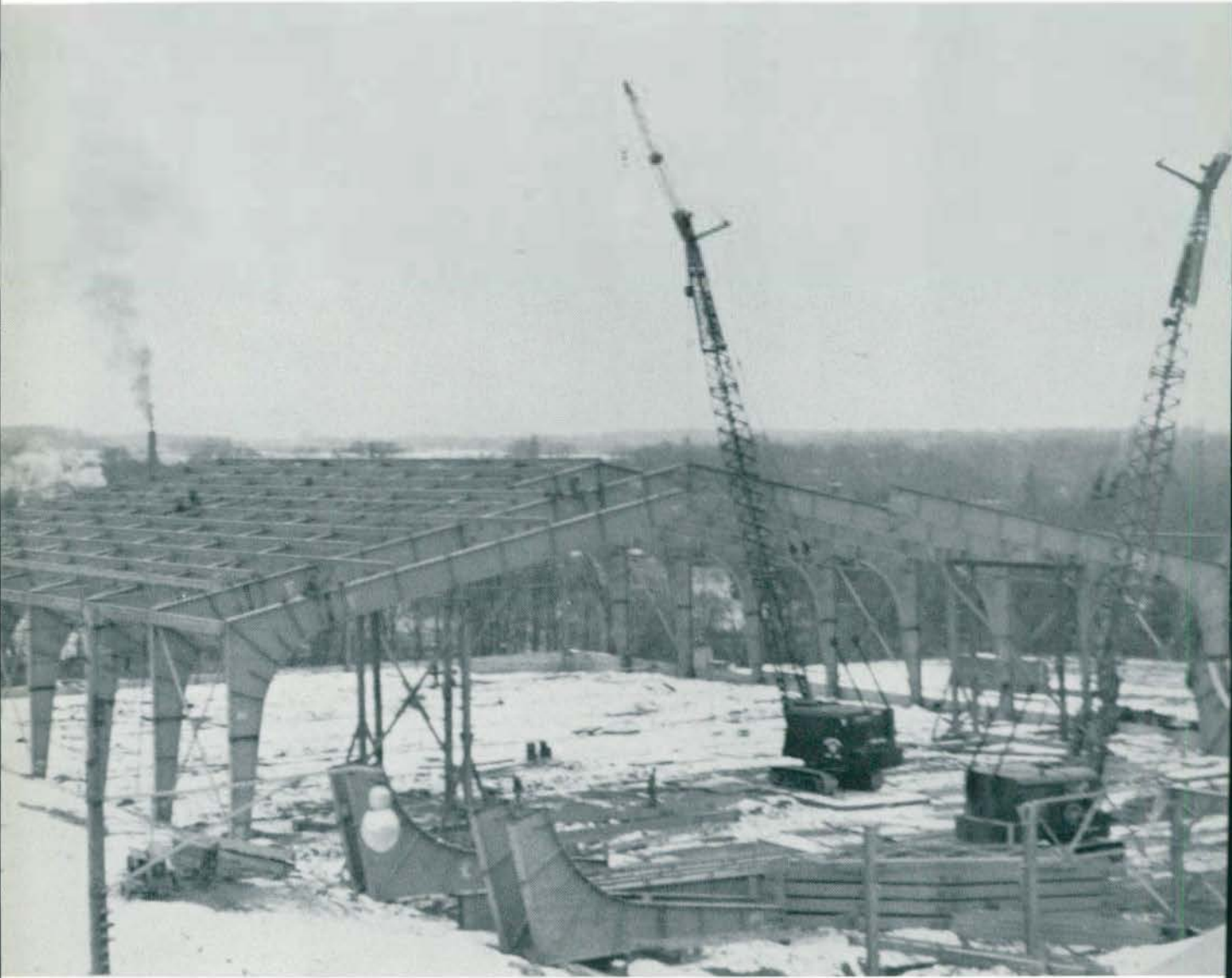


Coach McCulloch, Capt. Krause, Stevens, Wilbanks, Bunce, Raabe, Clark.

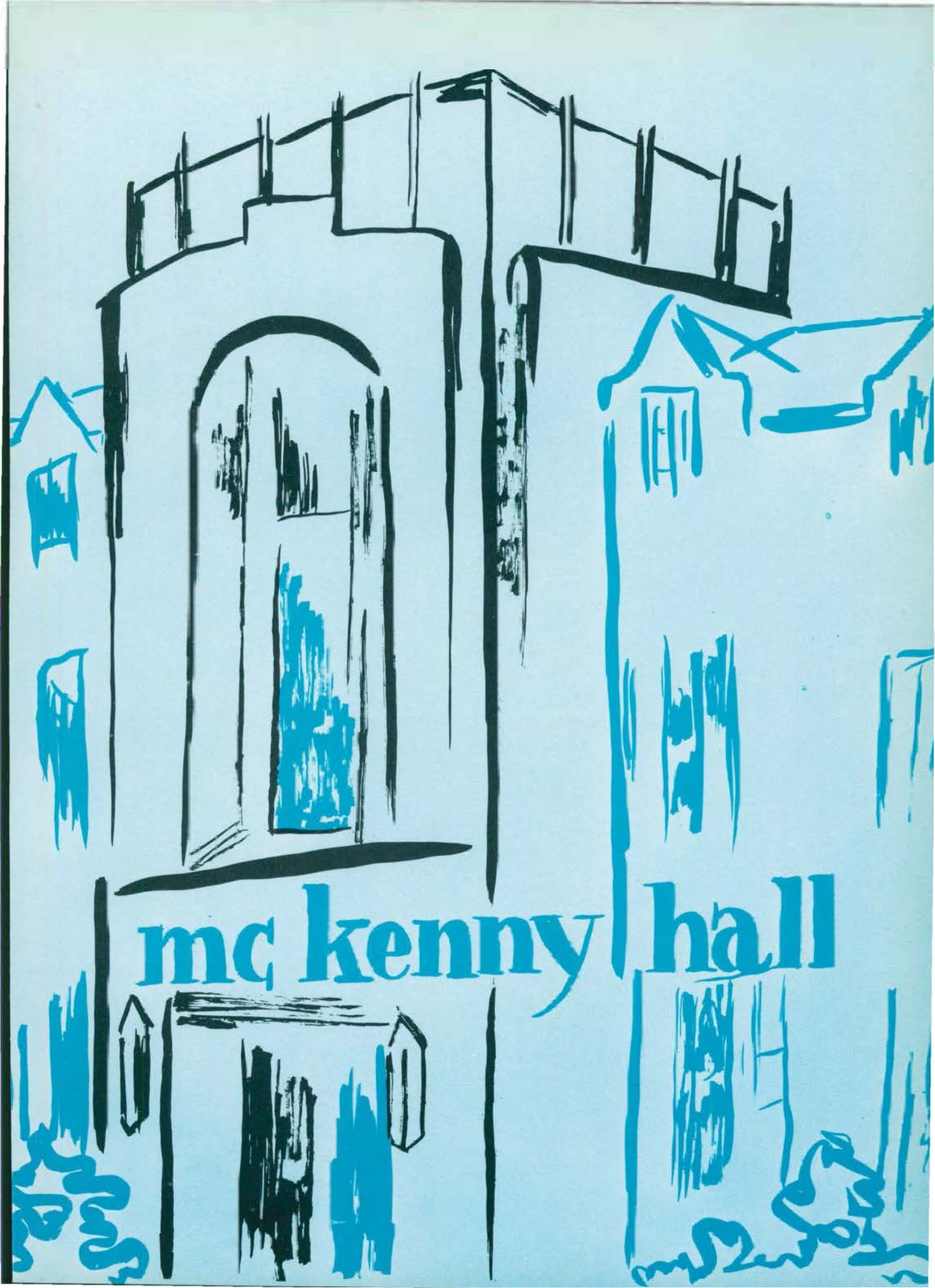
Tennis

"Doc" McCulloch's 1954 tennis squad had its most successful season in four years. The final record stood at ten victories against three defeats. Normal came in second in the I.I.A.C. conference meet at Carbondale, Illinois behind a strong Illinois Normal team. The squad was composed of Captain Keith Krause, Bob Clark, Dale Bunce, Claude Wilbanks, Jim Stevens, and Dick Raabe.

Normal's team started slowly by dividing their first six matches, but came back strong, winning their last seven in a row. Central Michigan, University of Detroit, Toledo, and Bowling Green each fell twice to the strong netmen of Normal. In the conference meet Krause was the runnerup in the first division of singles, then teamed up with Clark to take second in doubles. Bunce won the singles in the third division and teamed with Wilbanks to take runnerup in the second division of the doubles.



At Last . . . A Dream Takes Shape . . .



mc kenny hall



ROW 1: B. Haynes, K. Trepp, S. Sutton, N. Prater, G. Annis.
 ROW 2: R. Diaz, Dean Isbell (advisor), B. Waldorf, B. Middlekauff, R. Acini, J. English,
 J. Tagge, B. Perry.
 ROW 3: N. Basile, B. Waters, J. Worthington, P. Kennedy, M. Sherfy, J. Ecker, G. Zitzky,
 T. Svara.

Student Council



L. Toffoli, J. Davis, R. Kennedy, M. Staplin, P. Fisher, B. Taylor.

Student Court



ROW 1: L. Lemon, L. Adler, J. Davis, S. Kaczorowski, R. King, M. Wischow, E. Lentz, J. Bilky, J. Robinson.
 ROW 2: F. Davidson, J. Bates, B. Peterson, Dean Hill, N. Pond, M. Donnelly, B. Ladd, Dean Rudin, N. Bailey, A. Hosie.
 ROW 3: L. Cornwall, D. Karstetter, K. Northrup, J. Petzold, V. Jackson, L. Ostrander, A. LeDuc, E. Kimura, J. Chirvola, B. Hugill, E. Butler.

Women's League Executive Board



ROW 1: B. Walters, I. Olah, B. Ladd, C. Evans, B. Wade, C. Leon.
 ROW 2: G. Schlabitz, B. Brown, S. McPherson, S. Lambert.

Women's League Advisory Board

Women's League at Work and at Play



To the left—the students vote for Women's League candidates.

Women's League members decorate tree for Christmas Party.



The Harvest Hop sponsored by Women's League.



ROW 1: K. Seng, B. Dinsmore, E. Guido, W. Spencer, B. Sayers.
ROW 2: L. McDonald, B. Rowland, Mr. Lamiman, R. Bridge, J. Birnbaum.
ROW 3: D. Dunham, H. Minor, R. Peake, B. Dank, T. Nutt, T. Caldwell, D. Sloan.

Men's Union

The Men's Union is the organization of all college men. Each man upon registering, becomes a member of the Men's Union.

Each spring semester an all-sports banquet is given honoring the school's athletic teams. This banquet along with the annual winter dance, "Yule Log Drag" is sponsored by the Men's Union.

Another project sponsored by the Union, is the awarding of sweaters to the members of the college marching band each year.



R. Bochenek, M. Campbell, D. Dunham, Dean Hollis (Advisor), R. Zumstein, and K. Seng

Student Social Committee

Normal students owe their thanks to the All-College Student Social Committee for the many social events held on the campus. This group works with the Social Director, Miss Adelyn Hollis, in preparing the activities calendar and sponsoring All-College programs.

This year the group has sponsored the Kresge dances, the Homecoming dance, and the many mixers. In addition, the class parties during Orientation Week and the ever popular Christmas Party were presented by this committee.

Class Officers



Freshman Class

Left to right:
G. Koch, Vice-president
K. Frazer, Secretary-treasurer
B. Lewis, President



Sophomore Class

Left to right:
N. Bailey, Secretary
J. Thompson, President
J. Lepak, Vice-president
J. Bates, Treasurer

Junior Class

Left to right:
J. Blashill, Secretary
J. Roeser, Treasurer
L. McDonald, President
J. Hurbis, Vice-president





ROW 1: J. Blackford, F. Davidson, C. Leon (Secretary), P. Brown (President), G. Trotter (Treasurer), E. Weldon, B. Brown.

ROW 2: L. Howe, J. Bilkey, S. Friedly, A. Truesdell, B. Bunten, M. Shonk, S. Husted, M. Davidson.

Panhellenic Council

The Panhellenic Association is composed of two representatives from each of the nine member sororities at Michigan State Normal College. The purposes of this association are in keeping with the National Panhellenic Conference and governed by the policies established by the Student Activities Committee of Michigan State Normal College. These purposes are five-fold: to maintain on a high plane fraternity life and interfraternity relationships; to further intellectual accomplishments and scholarships; to maintain high social standards; to discuss questions of interest in the college and the fraternity world; to compile rules governing rushing, pledging, and initiation. Dean Hill is advisor to the Panhellenic Association.



Crazy mixed up party!



Don't you EVER show me another napkin!

KA KA

RCW 1: B. Wright, D. Henderson, A. Height, C. Cocroft, S. Robertson, A. Bryant.

RCW 2: Miss Baxter (Advisor), C. Collier (Treas.), H. Dickinson, D. Smith (C. Sec.), G. Turner (Pres.), M. Smith, E. Weldon (Sec.), J. Warren, I. Stephens.

RCW 3: J. Davis, W. Brazill, M. Moore, B. Parran, N. Porter, J. Cox.





ROW 1: J. Chiravola, C. Millar, B. Bates, K. Northrup, Y. Huey, E. Kimura, I. Williamson,
 H. Lympersis, S. Davis, N. McRae, J. Lewis.
 ROW 2: B. McDonald, J. Bilkey, S. Sole (Vice Pres.), M. Tamblyn (Sec.), Mrs. Bates (Faculty
 Advisor), D. Burke (Pres.), C. Fantow (Treas.), P. Wolfe, J. Townsend.
 ROW 3: L. Howe, S. Flessland, C. Floyd, D. Renwick, J. Stepp, T. Gormley, A. Gayer, P. Lang,
 D. Rice, W. Cox, L. Furay, P. Boussoulas, J. Norton.

Initiation Dinner



Week-End

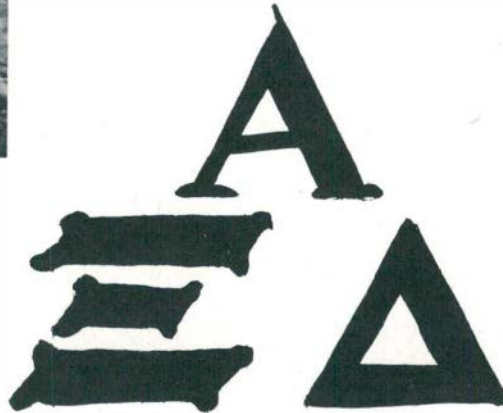




Homecoming Float—'54



Lost Weekend



ROW 1: N. Borsvald, M. Gambill, M. Campbell, C. Ward, J. Jordan, A. Nelson, C. Conklin, M. Sherfey.

ROW 2: S. Husted, J. Scherer, Mrs. La Bounty, M. Fisher, C. Mocerri (Sec.), J. Stamos (Pres.), N. Prater (Vice Pres.), B. Stamos, M. Liston (Treas.), A. Hasler, R. Alcini.

ROW 3: I. Olah, A. Strohl, B. Waldorf, M. Schickler, E. Andre, J. Wittig, E. Steup, I. Trinkle, J. McHenry, M. Harrison, L. Weinert, L. Cluchey, J. Bates, M. Manley.





ROW 1: B. Poole, E. Higgins, C. Thompson, M. Searles, S. Davis, J. Peters, M. Lemmer, M. Wischow, J. Greenwood, B. Waters, M. Hunt.

ROW 2: J. Schlacter, P. Fisher, P. Neuman, B. Wade (Vice Pres.), C. Leon (Pres.), S. McPherson, H. Reid, C. Evans (Treas.), J. Gutenschwager (R. Sec.), P. Sullivan, Mrs. Nagel.

ROW 3: J. Robinson, J. Helm, C. Broughm, J. Raabe, J. Kehrer, M. Haas, J. Morrissey, D. Assum, M. Shonk, M. Rowe, G. Merstick.



Young at Heart



DSE Floats Into First





Football Fever



Foot Loose & Fancy Free



ROW 1: M. Davidson, R. Wilson, E. Butler, L. Davis.
 ROW 2: Miss N. Anderson (Faculty Advisor), G. Trotter (Vice Pres.), B. Johnson (Treas.),
 V. Covington (Pres.), V. Kelly (Sec.), T. McCullum (Grad. Advisor).
 ROW 3: T. Hancock, J. Moore, A. Williams, L. Cade, V. Rutherford, Z. Bailey.





ROW 1: M. Baker, P. Kennedy, N. Milligan, C. Puls, V. Cushnack.

ROW 2: J. Locke, E. Meeks (R. Sec.), J. Roeser (Vice Pres.), Mrs. J. Kelly (Advisor), V. MacDonald (Pres.), B. Mulvany (Treas.), S. Dickerson (Corres. Sec.), C. Shepherd.

ROW 3: J. Blashill, L. Thackham, P. Hobbs, D. Potter, R. King, B. Kiessel, J. Smith, J. Brockman, P. Brown, J. Ford.

K M Δ

"In the Still" of the Night



"Deliver Us"





"All Aboard"



"Time Out For Tea"

II KΣ

ROW 1: M. Williams, B. Vandecar, J. Blackford.

ROW 2: S. Sutton (Corres. Sec.), A. Close (R. Sec.), B. Signor (Vice Pres.), Mrs. Stuart Wilson (Faculty Advisor), E. Kettenstock (Pres.), V. Murphy (Treas.).

ROW 3: M. Scrivens, S. Friedly, J. Kaiser, L. Podbielski.





ROW 1: C. Wolf, W. Beal, H. Mouganis, L. McKay, D. Haynes, J. Hood, A. Hadr, A. Truesdale.
 ROW 2: K. Trepp, S. Hedges, A. Wheeler, M. Rank, A. Fruin, Mrs. Langman, J. Staplin,
 G. Baldwin, P. Hathaway, R. Batalucco, L. Hazzard, B. Wallace.
 ROW 3: F. Davidson, M. Wood, S. Watson, H. Wigent, J. LaCrosse, D. Memhardt, J. Worthington,
 G. Potts, K. Sawyer, S. Thomas, J. Duberville, C. Rickley, L. Salles, M. Larson, B. Bell.

Motor Trouble for the SN's.



Σ NΦ

The Way to a Woman's Heart.

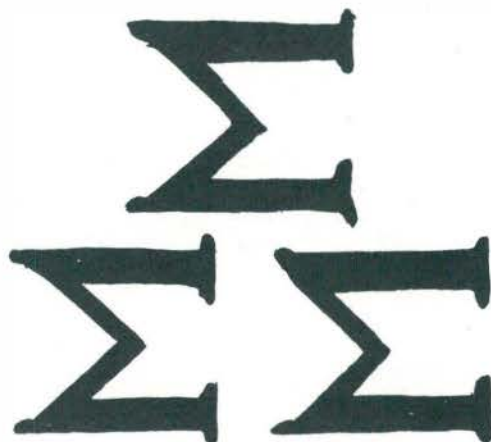




Sigmas at the Sea.



A Toast to National.



ROW 1: B. Taylor, M. Young (R. Sec.), N. Pinkerton, J. Tragge, V. McEnany, N. Calhoun, B. Borka, L. Toffoli, M. Larson.

ROW 2: G. Jersey, L. Cheek, L. Parker, B. Sagamang, B. Bunten, Mrs. Speckhard (Advisor), B. Curtis, M. Beal, G. Schlabitz, L. Adams.

ROW 3: G. Zimmerman, I. Gruenwald, K. Pond (Vice Pres.), B. Foley, B. Brown (Pres.), R. Zumstein, A. Brant, S. Poling, S. Lambert (Treas.), E. Irwin, B. Logie, A. Helmkamp, A. Dawson.





ROW 1: E. Watkins, D. Schlindler, J. Hurbis, T. Alford.

ROW 2: G. Conachen, R. Bridge, J. Nicita, J. Kitson, J. Manly, A. Blunt.

ROW 3: W. Moore, J. Thompson, D. Dunham, C. Pardon, R. Morrow, J. Moore, R. Wilgus, C. Gilliam.

Interfraternity Council

The purpose of the Interfraternity Council is to foster a closer relationship and a better understanding among the fraternities; to promote such activities as will further this end; and to initiate such legislation in connection with these as will further the best interests of the fraternities as a group. The Council regulates rushing and pledging each year.

The officers of the year have been J. Nicita, president; R. Bridge, vice-president; D. Babcock, secretary; G. Kasselemus, treasurer; and J. Kitson, corresponding secretary.

Activities of the Interfraternity Council have been a dance, co-sponsored with the Panhellenic Council, to advertise fraternities and sororities; the annual Shamrock Swirl; and the banquet held in honor of the Interfraternity Council representatives.



"Homecoming Float"



"Home, Sweet Home"

A Γ Υ

ROW 1: W. Laubengayer, D. Barkus, M. Pritchard, V. Elie, D. Schindler, J. Schuck, H. Hasenclever, D. Sinnett, J. MacDermid, T. Wilson, R. Kennedy.

ROW 2: D. Fairbanks, T. Fagan, B. Albert, Dr. Williams, Mr. Monahan, I. Watkins (Vice Pres.), R. Adams (Pres.), Dr. Virtue, Dr. Gex, Dr. Lotz, R. Dehnke, F. Paone (Treas.), J. Di-Commandrea.

ROW 3: B. Halle, W. Kessler, F. Kuhn, Joe Harris, J. Bozymowski, M. Ward, S. Milliman, G. Hall, J. Fredericks, D. Bryne, D. Dawkins, G. Peterson.





ROW 1: V. Badalow, L. Huebler, J. Ellis (Scribe), H. Batalucco (Lord High), D. Moseley (Commander), T. Laurain (Vice Commander), L. Haas (Treas.), J. Monk, T. Gevoski.
 ROW 2: H. Hershey, H. VanWagner, H. Kirschke, G. Kaselemis, B. Whittaker, B. Dueweke, D. Tarbutton, M. Jones, B. Earle, M. Johnson.

A OF H

The Greeks

Time out for a group picture

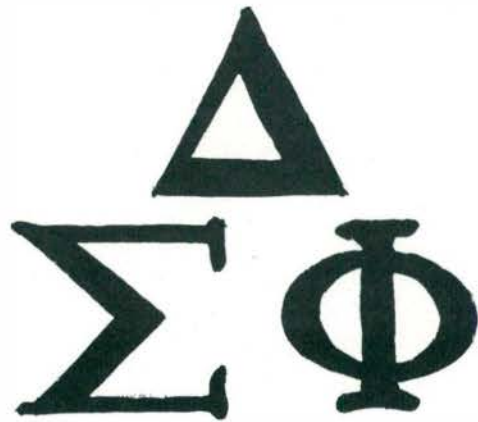




Sailors Ball at Central Michigan



Central Bus Trip



ROW 1: J. Tibbs, C. Evangelides, D. Bartholomy, K. Kraus, D. Carkeek, P. Calldhon, J. Lepax, B. Perry, G. McKenny, D. Larson.

ROW 2: R. Pasko, R. Wilgus, B. Ince, J. Zickel (Pres.), Dr. Kelly (Faculty Advisor), J. Zizzi (Vice Pres.), F. Cerneant (Treas.), D. Babcock, F. Martaniz.

ROW 3: R. Harter, D. Tienvari, G. Salo, K. Fenton, B. Medley, L. Bostwick, B. McCullugh, J. Moore, B. Linklater, D. Brown, B. Gould, J. Baker.





ROW 1: R. Pogliano, J. Lamb, B. Grahm, D. Kleinsmith (Corr. Gamma).
 ROW 2: H. Minor, T. Caldwell, (Gamma) K. Seng, (Delta) B. Chapelle, (Alpha) Mr. J. Brown-
 wigg, (Patron) R. Peake, (Beta) D. Root, V. Filsinger, D. Dunham.
 ROW 3: B. Mittlestat, B. Kukovich, D. Wenzel, M. Bluhm, J. Czanko, R. Jonks, H. Goodhue,
 R. Illi, J. Greenleaf.

K Φ A

Home Sweet Home



Fall Pledges

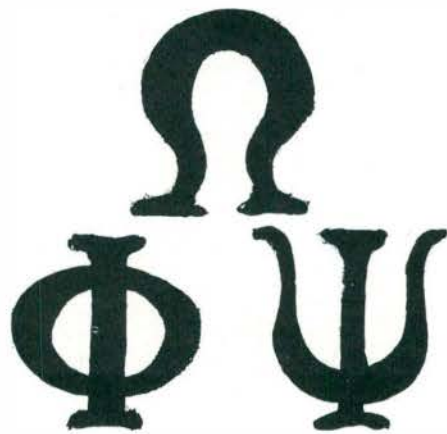




Men of Action



The Best



RCW I: L. Rivers, C. Washington, C. Dixon, (Pres.) C. Gilliam, V. Windom, T. Alford.





ROW 1: L. Bassett, D. Wilkins, J. Hurbis, B. Keller, Sig. J. Stevens (Rec. Sec.), G. Gokey, T. Lavoie, F. Weide (Corr. Sec.), J. Levack (Treas.).

ROW 2: J. Green, A. Oakes, Mr. William Wilcox (Advisor), P. Latham (Pres.), R. Vanek (Vice Pres.), T. Bradley, C. Jacobsen (Social Chairman), L. Holley.

ROW 3: C. Pardon, F. Tschirart, R. Biddle, C. Irwin, B. Middlekauff, N. Manych, R. Vanni, R. Wasco, G. Zitny, G. Albright.

Φ Σ E

Our Pajama Party

Pop, Women, and Song





Our annual alumni banquet



The winning fraternity float



RCW 1: R. Diaz, B. Rose, E. Dreiman, B. Henry, D. Diech, G. Yates, G. Garlick, P. Hawarny, B. St. Germaine, D. Helmkamp, D. Wood, B. Lakin, B. Appleton.

RCW 2: N. Powers, T. Davis, D. Dart, B. Eppler, B. Carson (Sec.), Mr. Schriber (Advisor), J. Nicita (Pres.), E. Steinhart (Vice Pres.), Dr. Erickson (Patron), C. Wiseman (Treas.), B. Backcock, M. Lichtenstein, B. Appleton.

RCW 3: G. Coscarelly, G. Wolfe, B. Halle, A. McKibbon, D. Wendt, M. Sarchilli, D. O'Donnell, M. Newton, B. Sobeski, R. Forth, F. Dean, B. Weymouth, F. Marvin, K. Santer, J. Kelly, D. Sample, H. Hoasch, T. Shara, J. Kitson.





ROW 1: C. Pursell, R. Babits, G. Smith, K. Wilkins, R. Hagopian, R. Dinsmore, W. Spencer, D. Burrell, J. Pickell.

ROW 2: R. Becker, P. Barnes, J. Austin, D. McClain, L. McDonald, E. Guido (Sec.), T. Nutt (Pres.), C. Hood (Patron), E. Kuca (Vice Pres.), R. Dank (Treas.), R. Mack, R. Daly, J. Duby.

ROW 3: R. Digon, R. Ehrbright, G. Davidson, L. Henderson, R. Bochener, D. Parks, D. Wendling, G. Birnbaum, J. Thompson, R. Wyer, J. Wise, J. Taylor, G. Myers, R. Bridge.

TKE

"Our Homecoming Float"



"After A Meeting"





The Open House

T Σ X

ROW 1: R. Harris, W. Moore (Patron), W. Work (Advisor), J. English (Pres.), J. Nist (Advisor), D. Rinkey (Vice Pres.), D. Boye.
 ROW 2: H. Wilkenson, R. Morrow (Sec.-Treas.), C. Taylor, J. Droste, T. Boggs, L. Boggs, E. Ritz.





ROW 1: C. McManigal, D. Jackson, S. Sottlie, D. Watson, (Pres.) J. Manley, (Vice Pres.) W. Palmer, (Sec.) J. Becker, D. Saunders, D. Russell, T. Russell.
 ROW 2: J. Walsh, W. Hunter, V. Easterling, Mrs. Koch, Mr. Koch (House Parents), D. Bailey, R. Wolford, D. Robb.
 ROW 3: N. Basile, B. Rowe, T. Smith, M. Bousamra, B. Greiner, J. Collins, A. Cornell, G. Conachen, D. Stallard, W. Parr, J. Walters.

Z X Σ

Can anybody see a place for my Q?



The old stamping grounds





ROW 1: Don Kleinsmith, Janet Thrush, Jim English, John Hurbis.
ROW 2: Ralph Morrow, Joe Levack.

Normal News

This year a new look was given the Normal News with an almost entirely new staff. The only veteran staff member was the Sports Editor.

Heading the paper this year as editor-in-chief was Jim English, assisted by Janet Thrush as assistant editor, Don Kleinsmith as sports editor, John Hurbis as business manager and Joe Levack and Ralph Morrow as advertising managers.

The Wearin'

O' The Green



This ribbon is guaranteed: to get you in trouble with the upper class girls . . . to get you dates with upperclass men . . . and to be completely wilted by Homecoming.

A beanie for a buck!





A green ribbon will do it every time!



The Freshman Mixer—a dance where upperclassmen look over the new-crop of girls.



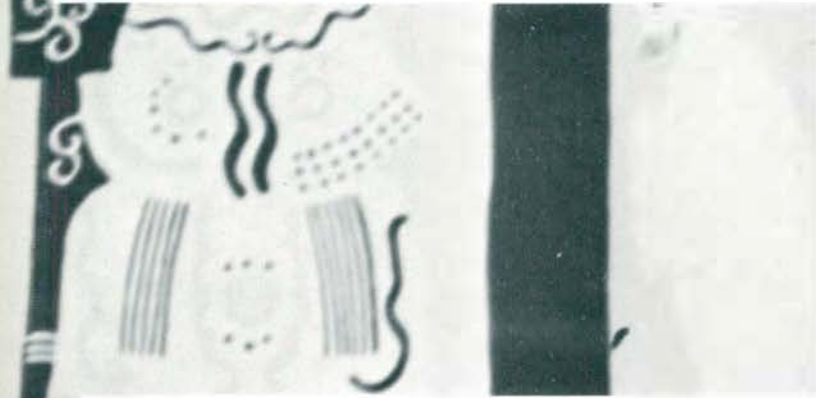
The J-Hop committee with a product of their many hours of hard work.



JADE HOP



Hey, there! Don't forget to get a program in favor.

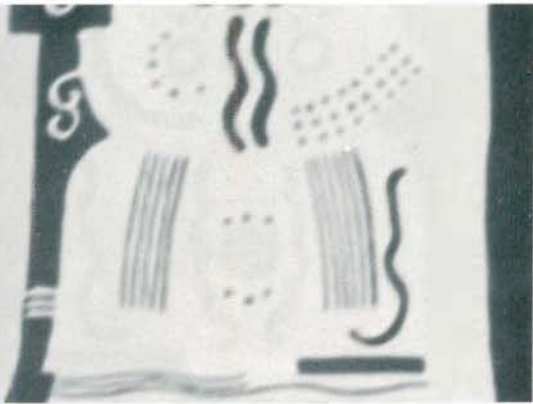


Below the J-Hop committee take time out and pose with their dates.





Many couples enjoyed themselves dancing to the music of Clyde Trask.



The committee and faculty greet JADE HOP guests.

Jade Hop Highlights





One of the most looked forward to events of the season—The Senior Musical. A great deal of enthusiasm, talent and hard work contribute to the success of this senior event. Here the cast takes time out to pose between rehearsals.

Senior Musical





Of equal importance—Jones Hall contributes their share to annual Dormitory Open Houses.



SOPHOMORE SWIRL—one of the highlights in the month of March.



A Scene from the one-act Plays presented at Roosevelt.



Summer school seniors also add their contributions to the field of Drama.

Drama On Campus



The Play's the thing!

Scenes from the One-Act Plays held in Roosevelt Auditorium. (below) The Annual Choral Union Christmas Concert.



Plays and Performances



Hail the Conquering Heros

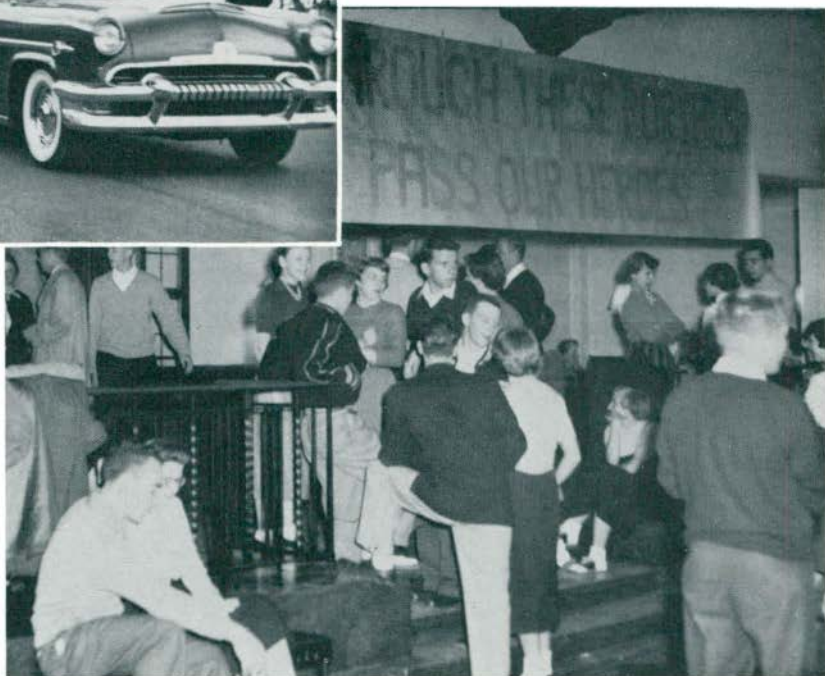


Coach Trosko waves farewell before the Central Game.



A parade for our victors.

To the victor—the spoils.





Michigan State Normal Cheerleaders keep school spirit alive on the field and off.

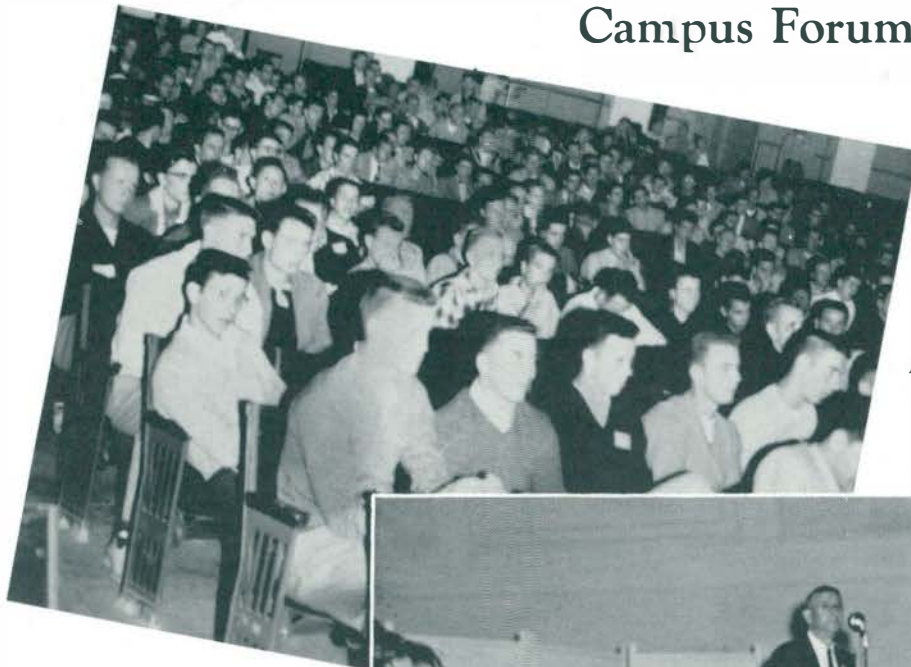
What would our games be without the wonderful spirit of the cheerleaders.





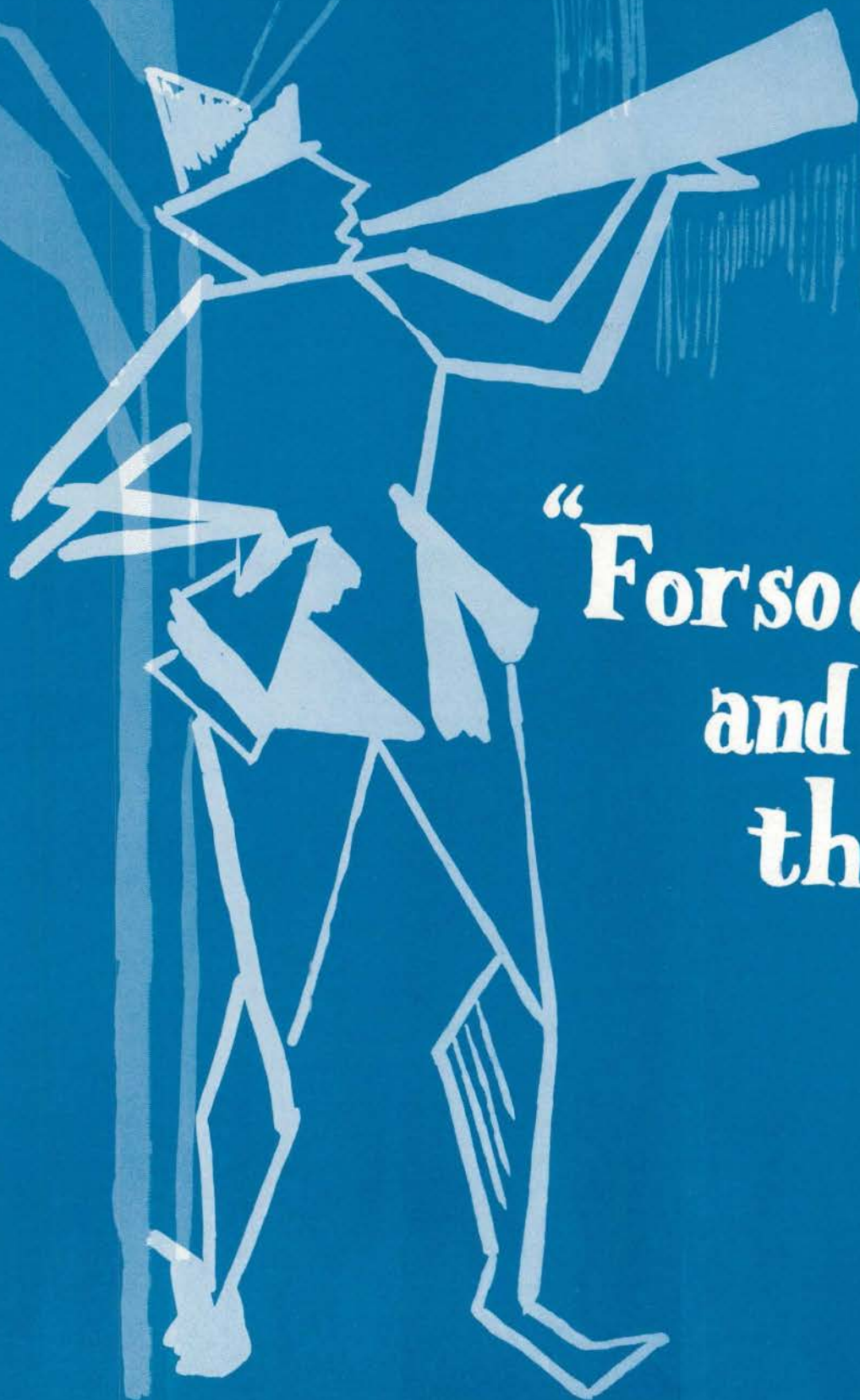
Campus Forum, a session of varying attitudes and expression.

Campus Forum and Assembly



Eyes and attention focus on Dean Brown during an assembly.





“Forsooth
and all
that...”





Floats add to the beauty of Homecoming

The winning dormitory float



The Homecoming Queen and her Court for 1955

To the left, our Queen Bee Shanklin





*Some of the trials and tribulations
before Homecoming*



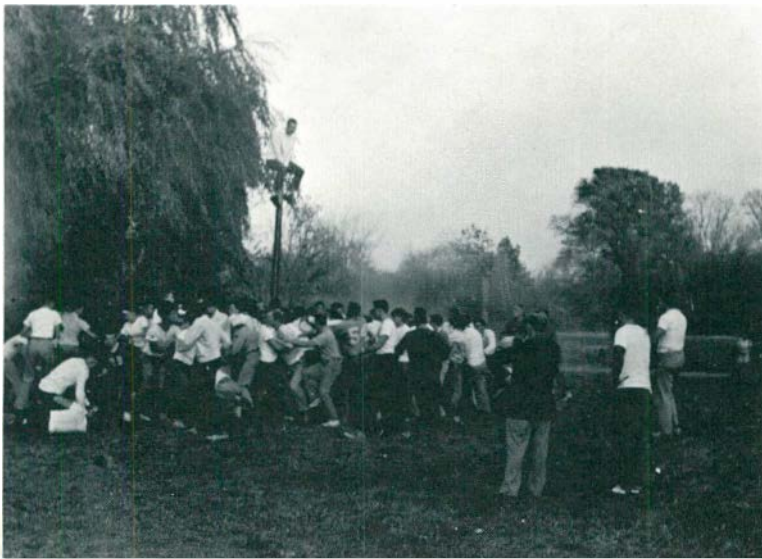
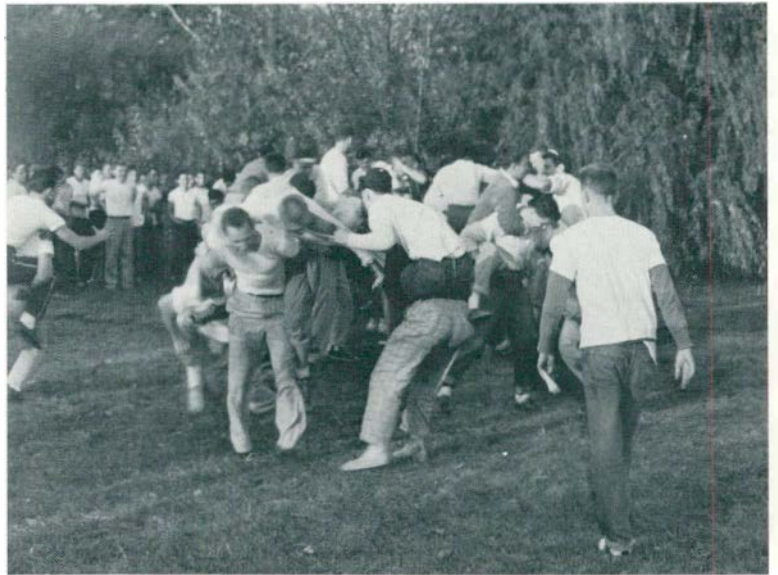
Homecoming Planning Committee

*Homecoming festive activities take
a great deal of planning and
preparation*





After all the planning is over there is still time for a demonstration of Homecoming spirit—a bonfire and Freshman class games add to the excitement.





*Reunion of Alumni
of 1892 during
homecoming week*



A Presentation of Flowers to our Queen

*ROTC Drill team
during the
Homecoming parade*



senior's





Baylor, Muggie A.
Inkster
Early Elementary



Barr, William D.
Willow Run
Business Admin.



Beach, Elsie M.
Grand Blanc
High School
English Club, History
Club



Beal, Mary Ellen
Flint
Junior-Senior High
Sigma Sigma Sigma



Benson, Paul
Ann Arbor
Pre Medicine

Blaine, Shirley Anne
Ypsilanti
Junior-Senior High
Brown, Jean A.
Reed City



Bossenberry, Earl
Clayton
Highland Park
Business Admin.
Baseball Capt. (2),
Basketball (2), New-
man Club, Business
Club, Varsity Club,
Dorm (Brown) Council



Bucklen, Dolores A.
Detroit
Physical Education
Physical Education
Club, Modern Dance
Club

Bradley, Thalia
Detroit
Business Education
Delta Sigma Theta
Sorority



Burd, Elliott Euan
Ann Arbor
Lambda Chi Alpha
Basketball, Football,
Baseball (intramural)

Breyfogle, Evangeline, J.
Three Rivers
Junior-Senior High
Stoic Society, Pi Gam-
ma Mu, Kappa Delta
Pi, Human Relations
Organization, Natural
Science Club, Women's
League, Executive
Board



Campbell, Rena M.
Early Elementary
Choral Union

Brougham, Carol M.
Highland Park
Early Elementary
Delta Sigma Epsilon,
Association of Child-
hood Education



Calhoun, Nancy A.
Pontiac
State Limited
Sigma Sigma Sigma,
State Limited Club



Carpenter, Madeline D.
Ypsilanti
Early Elementary
Natural Science Club,
Canterbury Club, Normal News Reporter



Corpolongo, Ned
Dearborn
Later Elementary



Cuny, Rita M.
Detroit
Business Admin.
Business Club, Newman Club



Dart, Richard E.
Media, Pennsylvania
Physical Education
Sigma Tau Gamma,
Canterbury Club,
Physical Education Club



Davis, Tom A.

Dean, Alvin F.
Dearborn
Junior-Senior High
Sigma Tau Gamma

Dumbrigue, Bertha H.
Drayton Plains
Occupational Therapy
Occupational Therapy Club, Choral Union

Dickerson, Shirley J.
Detroit
Later Elementary
Kappa Mu Delta Sorority, Wesley Foundation

Fagan, Thomas E.
Detroit
Physical Education
Alpha Gamma Upsilon, Physical Education Club, Newman Club, Football (varsity) 2, 3, 4, Football (Freshmen) 1.

DiComandrea, John Anthony
Watertown, Mass.
Junior-Senior High
Alpha Gamma Upsilon, Manager Cross Country Team '54, Cross Country (1, 2, 3), Indoor and Outdoor Track (1, 2, 3, 4), All America Track '53, Nat. 15 Kilo Champ '52, Nat. 25 Kilo Champ '53, Track Captain '54, Men's Union

Fasing, Richard A.
Later Elementary

Dimas, Fay A.
Detroit
Physical Education
Physical Education Club, Manager of W. R. A. Archery and Badminton, Women's Recreation Association Board, Catalina Club, Jones Hall House Council, Freshman Advisor, Student Council

Fitzgerald, Glenn T.
Detroit
Later Elementary
History Club, English Club, Newman Club

Drue, Jimmy G.
Dearborn
Junior Senior High
Phi Delta Pi

Flessland, Susan Boyer
Pontiac
Special Education
Alpha Sigma Tau, Stoics, Kappa Delta Pi





Gale, Richard W.
Industrial Arts

Gamboe, Helen G.
Early Elementary

Gansen, William J.
Dearborn
Junior-Senior High

**Garlick, Gordon
William**
Tecumseh
Business Admin.
Sigma Tau Gamma.
Vice Pres. (1)

Gibbs, Olga E.
Early Elementary
Delta Sigma Theta

Gillespie, Allesia M.
Pontiac

Goudy, Genevieve A.
Wayne
Later Elementary
Kappa Mu Delta

Graham, Clayton R.
Northville
Business Education

Handke, Winifred A.
Dearborn
Early Elementary

Harter, Ray L.
Detroit
Business Admin.
Delta Sigma Phi.
Men's Union

Hawes, William K.
Speech and English
Lamda Iota Tau, One
Act Play, Tusitala,
National Recording
Secretary Lamda Iota
Tau, Director One-
Act Play (3, 4)

**Helmkamp,
Daniel J.**
Sigma Tau Gamma,
Wesley Foundation

Henderson, W. Lee
Flint
Economics
Phi Delta Pi, Business
Club, Veteran's Club

Hedges, Shirley A.
Jackson
Early Elementary
Sigma Nu Phi, Wom-
en's League Executive
Board, Dorm Council
Panhellenic Council

Hesselgrave, Max E.
Jackson
Later Elementary
Alpha Gamma Upsilon,
Kappa Delta Pi, Choral
Union, Men's Chorus





Hurley, George William
Detroit
Physical Education

Innes, Lois Ann Snover
Later Elementary
Mu Phi Epsilon, Choir,
Choral Union, Inter-
Varsity

Johnston, James R.
Business Admin.
Arm of Honor, Foot-
ball Varsity (2, 3).
Varsity Club Treasurer

Jones, Zenobia Romulus
State Limited

Leerkamp, Shirley A.
Ann Arbor
Special Education
Special Education Club

Kehrer, Joann Joyce
Wyandotte
Early Elementary
Delta Sigma Epsilon,
Kappa Delta Pi, Mu
Phi Epsilon, Corre-
sponding Secretary,
Orchestra, Gamma
Delta, Choral Union,
Treasurer—Goodison
Hall

Koper, Mildred B.
Ypsilanti
Early Elementary

Lang, Patricia H.
Dearborn
Junior-Senior High
Alpha Sigma Tau,
Editor for AST, Chem-
istry Club, History
Club, Natural Science
Club, Newman Club

Laurain, Theodore J.
Business Admin.
Arm of Honor

Jordan, Jeraldine Joyce
Saline
Early Elementary

Leslie, Frank C.
Willow Run
Junior-Senior High

Less, Diane
Detroit
Early Elementary
King Dorm Advisory
Board, Choral Union

McHaney, Jean A.
Flint
Early Elementary
Alpha Xi Delta, Nor-
mal News

Maas, Marion A.
Lincoln Park
Early Elementary
Catalina Club

Madigan, Margaret Ann
Grosse Pointe Woods
Later Elementary
Kappa Mu Delta
Women's League
Board, Goodison Hall,
Sec. Leadership Work-
shop, Chairman, W.
R.A.





Martin, Benjamin
 Flint
 Industrial Arts
 Phi Delta Pi, Industrial Arts Club, Varsity Baseball

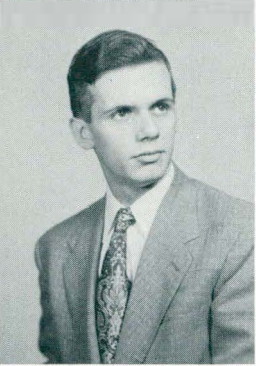
Rice, Dorothy
 Ann Arbor
 Alpha Sigma Tau,
 Business Club Sec.

Rivers, Leon
 Detroit
 Omega Psi Phi, Industrial Arts Club



Meitzner, Jean A.
 Detroit
 State Limited
 Gamma Delta, Normal News staff, State Limited Club

Royce, Adele J.
 Business Admin.
Skowneski, Edward
 Physical Education
 Phi Sigma Epsilon,
 Football (3), Freshman Coach, Freshman Baseball, Physical Education Club, Business Education Club



Nelson, Thomas J.
 Dearborn
 Special Education
 Special Education Club, Newman Club

Stewart, Marian Ruth
 Fairgrove
 Later Elementary

Stringer, Douglas
 Ypsilanti
 Physical Education
 Phi Sigma Epsilon,
 Track (1, 2, 3, 4),
 Coaching Cross Country



Palmer, William Louis
 Columbiaville
 Pre-Law
 Zeta Chi Sigma

Taylor, Barbara J.
 Detroit
 Junior-Senior High
 Sigma Sigma Sigma,
 Kappa Delta Pi,
 Lambda Iota Tau,
 Student Court

Thompson, Corine V.
 Early Elementary
 Delta Sigma Epsilon,
 Gamma Delta, Association of Childhood Education, Student Religious Ass'n.



Perry, Lillian M.
 Pontiac
 Junior-Senior High
 Dormitory House
 Council

Touse, Lucille D.
 Belleville
 Early Elementary

Vasher, Wayne F.
 Wyandotte
 Later Elementary
 Sigma Alpha Delta,
 M.S.N.C. Players





Vogt, Richard R.
Trenton
Later Elementary
Delta Gamma Tau at
Alma

Whited, Alvin
Williams, Alice D.
Detroit
Social Work
Delta Sigma Theta,
Choral Union



Walker, Douglas H.
Ann Arbor
Recreation
Phi Sigma Epsilon,
Student Council

Williams, William C.
Highland Park
Business Education
Phi Sigma Epsilon,
Business Club, Foot-
ball (2, 3, 4), Baseball
(3, 4)



Williamson, Gretchen
Junior-Senior High
English Club, Pi
Kappa Delta, Student
Council



Wallace, Beverly J.
Art Education
Sigma Nu Phi

Wood, David
Taylor Center
Junior-Senior High
Sigma Tau Gamma

Young, Ward E.
Ypsilanti
Physical Education
Sigma Tau Gamma



Walsh, Jerry V.
Clarkston
Music
Zeta Chi Sigma, Phi
Mu Alpha Sinfonia



Weinert, Elinor C.
Detroit
Later Elementary
Alpha Xi Delta, Stoic
Society, Jones Hall
Advisory Board



J. Zizzi (Vice-president), J. Baker (President), A. Fruin (Secretary), R. Vanek (Treasurer).

Senior Class Officers



Adams, Lee J.
Birmingham
Special Education
Sigma Sigma Sigma,
Special Education Club

Anderson, Robert E.
Ypsilanti
Junior-Senior High
Pi Gamma Mu

Arnold, Thais F.
Flint
Later Elementary

Austin, John J.
Willow Run

Badalow, Vaskin
Detroit
Industrial Arts
Arm of Honor, Pres.
of Varsity Club, In-
dustrial Arts Club

Baker, John Charles
Monior
Education—Art
Delta Sigma Phi, Sen-
ior Class President,
Student Court, Senior
Musical, League Serv-
ice Com., Special Edu-
cation Club, Art Club,
Newman Club, Sopho-
more Varieties, J-Hop
Com., Dance Club,
Homecoming Com.

Bareis, Mary
Chelsea
Early Elementary
Newman Club

Batalucco, Harold L.
Belleville
Industrial Arts
Arm of Honor, Indus-
trial Arts Club

Baughan, C. Fae
Ypsilanti
Music
Mu Phi Epsilon, Dorm
Chorus Director, Nor-
mal College Choir,
Choral Union, King
Hall Social Com.

**Baunoch, Joseph
William**
Wyandotte
Secondary Education
Sigma Tau Gamma,
M.S.N.C. Players

Beal, Wanda L.
Algonac
Junior-Senior High
Sigma Nu Phi, Kappa
Delta Pi, King Hall
President

Becker, John W.
Detroit
Social Work
Zeta Chi Sigma (Vice
Pres.), Newman Club,
Varsity Football, Stud-
ent Council, Inter-Fra-
ternity Council

Beebe, Albert A.
Willow Run
Junior-Senior High
Alpha Gamma Upsilon

**Bergman,
Clarence, L.**
Lake Orion
Music Education
Phi Mu Alpha Sinfonia
College Choir, Band,
Choral Union

Bergman, George R.
Ann Arbor
Social Science and
Religion





Bilby, Doris Elaine
Tecumseh
Early Elementary
C.Y.F.

Boggs, Teddy
Ypsilanti
Speech
Sigma Alpha Delta,
Inter-Fraternity
Council

Bombyk, George
Junior-Senior High
M.S.N.C. Players.
Football, Debate



Blackford, Janet L.
Early Elementary
Pi Kappa Sigma, Pan-
hellenic Council

Borka, Beverly M.
Flint
Early Elementary
Sigma Sigma Sigma

Boussoulas, Penelope
Physical Education
Alpha Sigma Tau,
W.R.A. Board, Educa-
tion Club, M.S.N.C.
Players



Blair, George
Centerline
Junior-Senior High

Bradley, Thomas M.
Ypsilanti
Phi Sigma Epsilon,
Business Club

Brant, Arlene J.
Pittsburgh, Pa.
Early Elementary
Sigma Sigma Sigma



Bluhm, Marland E.
Detroit
Physical Education
Kappa Phi Alpha, Var-
sity Track

Breniser, Joyce R.
Gregory
Early Elementary
Newman Club, State
Limited Club

Brockman, Judith A.
Highland Park
Early Elementary
Kappa Mu Delta



Boggs, Louis G.
Ypsilanti
Industrial Arts
Sigma Alpha Delta,
Industrial Arts Club

Brown, Betty J.
Youngstown, Ohio
Occupational Therapy
Sigma Sigma Sigma,
O.T. Club, Women's
Ad-Board, League
Panhellenic, Dorm
House Council

Brown, Peggy J.
Wyandotte
Later Elementary
Kappa Mu Delta, Mu
Phi Epsilon, Choral
Union, Choir, Fresh-
men Girls Ensemble,
Intersivity, Pres. of
Panhellenic



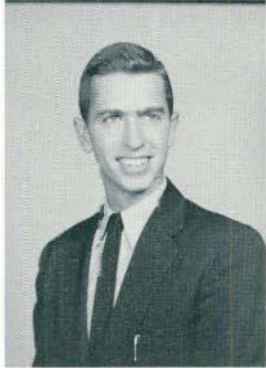


Brune, William
Edward
Dearborn
Math

Caldwell, Thomas E.
Samaria
Special Education
Kappa Phi Alpha,
Freshman Class Pres.,
Vice Pres. Men's
Union

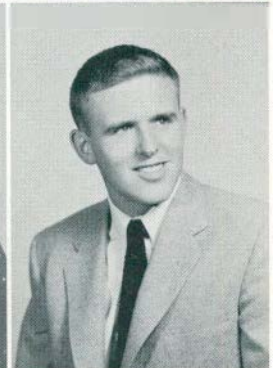


Campbell, Shirleyan
Ypsilanti
Music Education
Mu Phi Epsilon, Band,
Orchestra,
Choral Union



Burd, Elliott

Cantrell, Mary
Judith
Ypsilanti
Junior-Senior High

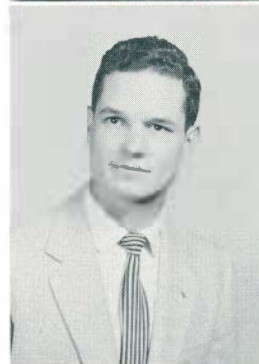


Carson, Howard C.
Ypsilanti
Later Elementary
Sigma Tau Gamma,
History Club, Newman
Club, Varsity Golf



Burk, Delores N.
East Lansing
Alpha Sigma Tau
(Pres.)

Chapelle, Robert
Wager
Ypsilanti
Business Admin.
Kappa Phi Alpha

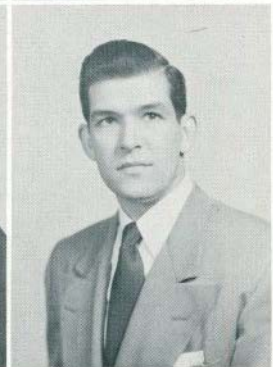


Chowen, Roberta
Walled Lake
State Limited
Choral Union, State
Limited Club



Butler, Lockwood
John
Ann Arbor
Pre-Law
Pi Gamma Mu, His-
tory Club, Natural
Science Club, Gavel
and Rostrum, Speech
Club, Brown Hall
Council, Human Rela-
tions Club

Chowen, Rose Mary
Ann
Walled Lake
State Limited
Choral Union, State
Limited Club



Cook, Kenneth R.
Ann Arbor
Junior-Senior High
Sigma Tau Gamma,
Orchestra, Band, Phi
Mu Alpha Sinfonia



Cade, Lucy Ann
Detroit
Physical Education
Delta Sigma Theta,
Modern Dance Club
(Pres.), English Club,
House Council in Jones,
Freshman Counselor
King, Swim Club

Corey, Miriam Joan
Litchfield
State Limited
C.Y.F., State Limited
Club



Corio, Joseph R.
Dearborn
Special Education



Covert, Jack S.
Pontiac

Covington, Vivian L.
Monroe
Later Elementary
Delta Sigma Theta
(Pres.), W.R.A., Eng-
lish Club

**Cox, Wilma
Jacqueline**
Nilea
Business Education
Alpha Sigma Tau,
Business Club

Craig, Sandra J.
Milan
Early Elementary

Davenport, Angus
Industrial Arts

**Davidson, George
Richard**
Port Sanilac
Teaching
Phi Delta Pi

Davis, Glenn H.
Physical Education
Phi Sigma Epsilon,
Sigma Delta Psi, Track

Davis, Joan E.
Ypsilanti
Early Elementary
Sigma Sigma Sigma,
Student Court

Davis, John D.
Dexter
Junior-Senior High

Davis, Lola M.
Grand Rapids
Later Elementary
Delta Sigma Theta

**Degrazia, Aurora
Frances**
Dearborn
Early Elementary
Natural Science Club,
English Club

Dell, Shirley V.
Flint
Special Education

DeMeritt, Bruce
Music Education
Band, Choir

Deierlein, Gail E.
Detroit
Early Elementary
Goodison Counselor,
Choir, Choral Union

DeGuis, L. Joan
Pontiac
Physical Education
Catalina Club, W.R.A.,
Physical Education
Club, Dance Club





DeWolfe, Barbara J.
Ann Arbor
Early Elementary
English Club

Dickinson, Colleen
Early Elementary
Newman Club, M.S.
N.C. Players

Dieck, Donald E.
Willow Run
Physical Education
Sigma Tau Gamma

Donegan, Sally Ann
Ann Arbor
Music Education
Mu Phi Epsilon, Choral Union, M.S.N.C. Choir, Sophomore Variety Show, Senior Musical

D'Pulos Theodore
Physical Education
Arm of Honor Fraternity

Dudley, Helen V.
Ypsilanti
Home Economics
Home Economics Club

Dueweke, Robert F.
Industrial Arts
Arm of Honor Fraternity, Industrial Arts Club

Dupont, Fred E.
Business Admin.

Drue, Jim C.

Eary, William Hunter
Ann Arbor
Junior-Senior High

Edwards, Mary E.
Detroit
Early Elementary

Egbert, Beth D.
South Lyon
Early Elementary
King Hall Social Com.

Eisele, Lois A.
Chelsea
Early Elementary

Ellis, Barry L.
Later Elementary
German Club, Spanish Club, Newman Club

English, James L.
Hazel Park
Junior-Senior High
Sigma Alpha Delta,
Editor of Normal News, Student Council (Vice Pres.)





Ericson, Edward L.
Willow Run
Recreation
Zeta Chi Sigma, Square
Dance Club, Cheer
Leader, Exhibition
Dance Group

Fetters, Shirley A.
Ypsilanti
Art Education
Delta Sigma Epsilon,
C. Y. F., M. S. N. C.
Players' Club, English
Club

Filsinger, Vaughn E.
Ypsilanti
Industrial Arts
Kappa Phi Alpha, In-
dustrial Arts Club, In-
ter-Fraternity Council



Ernst, Dorothy
Milan
Early Elementary
S. R. A., Natural Science
Club, Choral Union

Fisher, Patricia M.
Occupational Therapy
Delta Sigma Epsilon,
Kappa Delta Pi, Jones
Hall (Vice Pres.), Stud-
ent Court, O. T. Club,
Woman's League Exec.
Board

Floyd Carol Ann
Dearborn
Early Elementary
Alpha Sigma Tau,
Goodison Hall House
Council



Evans, Carolyn C.
St. Joseph
Later Elementary
Delta Sigma Epsilon,
Stoic, Mu Phi Epsilon,
Kappa Delta Pi, Pres-
ident of Jones Hall,
Campus Advisory
Board, Band, Orches-
tra.

Forward, Beatrice B.
Dearborn
Business Education

Frierson, Reba Jean
Ypsilanti
Later Elementary
Alpha Kappa Alpha



Fairbanks, David N.
Business Admin.
Alpha Gamma Upsilon,
Band

Fruin, L. Anne
Early Elementary
Sigma Nu Phi (Pres.),
Kappa Delta Pi, Sen-
ior Class Secretary,
Pan-Hellenic Council,
Freshman Counselor,
Advisory Board King
Hall

Furay, Mary Lynn
Corinne
Detroit
Early Education
Alpha Sigma Tau



Fama, Gina
Wayne
State Limited

Geiger, Margaret
Gleason
Saline
Music Education
Mu Phi Epsilon, Stoics,
Choir, Choral Union,
Women's League, Col-
lege Social Committee,
Goodison Counsellor

Gianelli, Delores J.
Belleville
Physical Education
W. R. A. (Pres.), Dorm
Treasurer, House
Council, Physical Edu-
cation Club





Gilliam, Cleon
River Rouge
Omega Psi Phi, Basketball, Baseball

Gregerson, Harvey H.
Special Education
Greiner, Robert W.
Wyandotte
Pre-Medicine
Zeta Chi Sigma, Newman Club



Gilliand, Maryellen
Dearborn
Music Education
Mu Phi Epsilon, Choir, Choral Union, IntersVarsity, Goodison Counselor

Griffitts, Roy William
Junior-Senior High
Kappa Phi Alpha
Grindstaff, Edith M.
Ann Arbor
Pre-Dental Hygienist
Chemistry Club



Green, Naomi
Detroit
Junior-Senior High
Delta Sigma Theta, Vice Pres. King Hall, House Ad. Board, Spanish Club, Evaluation Committee

Guck, Edgar A.
Willow Run
Junior-Senior High
Guido, Eugene J.
Dearborn
Business Education
Phi Delta Pi, Sec. Dorm Council, Men's Union, Homecoming Committee



Greene, Bert Ira
Tecumseh
Junior-Senior High
Pi Gamma Mu, Pi Kappa Delta

Gurk, Donald F.
Ann Arbor
Industrial Arts Club
Gutenschwager, Jayne A.
Royal Oak
Early Elementary
Delta Sigma Epsilon, Lutheran Students



Greenhoe, Nancy Kathleen
Bay City
Junior-Senior High
Kappa Delta Pi, Stoic, W.R.A., Dormitory Pres. Goodison, Newman Club

Haas, Louis
Business Admin.
Arm of Honor, Business Club, Inter-Fraternity Council
Hagemeister, Barbara L.
Early Elementary





Halle, Bruce T.
Willow Run
Business Admin.
Alpha Gamma Upsilon

Hamilton, Theophilus E.
Willow Run
Music
Kappa Alpha Psi.
Band, Orchestra

Hansen, Joanne J.
Milford
Music Education
Mu Phi Epsilon, Choral Union, Freshmen Girls Ensemble

Harris, Ronald E.
Ypsilanti
Industrial Arts
Industrial Arts Club

Harrison, Mary A.
Ferndale
Special Education
Alpha Xi Delta

Hartwig, Marie E.
Livonia
State Limited

Hathaway, Persis
Later Elementary
Sigma Nu Phi

Hazzard, Laura R.
Special Education
Sigma Nu Phi

Hedlesky, Mertie B.
Early Elementary

Heffinger Edward
McKinley
Lincoln Park
Junior-Senior High
Pi Gamma Mu

Helm, Jane A.
Dearborn
Physical Education
Delta Sigma Epsilon
Dormitory President,
W.R.A., Cheerleader

Higgins, Francis A.
Junior-Senior High
Phi Delta Pi, Frama
Rho, History Club

Hileman, Robert Lee
Lincoln Park
Junior-Senior High

Hixson, Mary Anna
Romeo
Art Education
Normal News, W.R.A.,
Art Club

Hoffman, Marlene E.
Dearborn
Early Elementary
College Choir and
Choral Union, M.S.
N.C., Player's, Jones
House Council





Hunt, Ruth Ann
Lake Odessa
State Limited

**Jacobsen, Clyde
Kimbal**
Saline
Junior-Senior High
Phi Sigma Epsilon

Jersey, Virginia A.
Romeo
Junior-Senior High
Sigma Sigma Sigma

Johnson, Barbara M.
River Rouge
Occupational Therapy
O.T. Club. C.Y.F.

**Jones, Michael
Hutchinson**
Detroit
Industrial Arts.
Arm of Honor

Kaiser, R. Jo Anne
Pontiac
Early Elementary
Pi Kappa Sigma,
Freshman Counselor

Kellar, Louise Mae
Crosswell
Junior-Senior High

Kelly, Jack A.
Sandusky
Business Admin.
Sigma Tau Gamma

**Kettenstock,
Evelyn I.**
Lincoln Park
Early Elementary
Pi Kappa Sigma
(Pres.), Newman Club,
Jones Hall Advisory
Board

Kousaris, Bessie
Flint
Early Elementary

Kozarek, Donald
Chester
Muskeegan
Economics

Kroneck, Pauline M.
Van Dyke
Physical Education
W.R.A., King Dormi-
tory House Council,
Physical Education
Club

Krzyz, Frances K.
Ypsilanti

Kuca, Edward G.
Detroit
Junior-Senior High
Phi Delta Pi

Kunze, Jane M.
Marysville
Early Elementary





LaBrew, Charlotte V.
Detroit



Ladd, Betty F.
Hazel Park
Early Elementary
Kappa Mu Delta,
Stoic Society, Women's
League Executive Board, Women's
League Advisory Board



Lambert, Sally L.
Port Huron
Junior-Senior High
Sigma Sigma Sigma,
Treasurer Women's
League Advisory Board



Latham, Paul E.
Mt. Clemens
Business Education
Phi Sigma Epsilon
(Vice Pres.)



Lavoie, Thomas Paul
Alpena
Recreation
Phi Sigma Epsilon,
Manager of Intramural Athletics

Leon, Caryl A.
Detroit
Early Elementary
Delta Sigma Epsilon,
Panhellenic, Student
Council, Goodison
Hall House Council,
Women's League Advisory Board, Aurora,
J-Hop Com., Homecoming Com.

Mank, John M.
St. Clair Shores
Physical Education
Arm of Honor, Physical Education Club,
Political Science Club

Logan, Norman H.
Dearborn
Music
Phi Mu Alpha Sinfonia, Instrumental
Director of Sinfonia,
Band, Choral Union

Manley, James F.
Goodells
Music
Zeta Chi Sigma, Phi Mu Alpha Sinfonia,
Band Choral Union,
Choir

Lozano, Mary M.
Secondary Education

Manyck, Nick
Flint
Industrial Arts
Phi Sigma Epsilon,
Industrial Art Club,
Varsity Club, Football,
Basketball, Baseball

MacDermid, John E.
Romulus
Alpha Gamma Upsilon

Marriott, Albert G.
Wayne
Secondary Education

MacDonald, Virginia
Lou
Detroit
Later Elementary
Kappa Mu Delta

Martin, JoAnn
Duberville
Lake Orion
Early Elementary
Sigma Nu Phi, Early
Elementary Club





Martin, Shirley L.
Grosse Pointe
Early Elementary



May, Barbara L.
Pontiac
Junior-Senior High
Stoic Society, Chem-
istry Club, Natural
Science Club



McClain, Dahryl L.
Highland Park
Junior-Senior High
Phi Delta Pi, History
Club, Homecoming
Com., Fraternity Ath-
letics, Student Council,
Dorm Council, Proctor



McCulloch, Ruth A.
Pontiac
State Limited
State Limited Club,
Treasurer



**McEnany,
Virginia, H.**
Wyandotte
Early Elementary
Sigma Sigma Sigma,
Newman Club

**McManigal,
Charles W.**
St. Clair
Music Education
Zeta Chi Sigma, Phi
Mu Alpha, Band Or-
chestra, Choral Union,
Choir, Drum-Major

Michael, Millard E.
Willow Run
Industrial Arts
Industrial Arts Club

Meanza, John J.
Detroit
Economics
Delta Chi, Business
Club, Baseball

Minkoff, Louis
Ypsilanti
Business Admin.

Medley, William C.
Grosse Pointe
Delta Sigma Phi, Foot-
ball, English Club,
History Club

Miotto, Donald A.
Wyandotte

Medlin, James L.
Willow Run
Later Elementary

Moceri, Concetta R.
Detroit
Later Elementary
Alpha Xi Delta, Treas-
urer of King Dorm

Meyers, Mary L.
Detroit
Secondary Education

Montgomery, Helen
Lincoln Park
Early Elementary
Catalina Club, Eng-
lish Club, Choral
Union





Montgomery, Lorraine
Dearborn
Special Education

Moore, Jeane V.
Detroit
Early Elementary
Delta Sigma Theta,
W.R.A.

Morin, Nancy S.
Ontonagon
Occupational Therapy
Stoic Society, Occupa-
tional Therapy Club

Morrissey, Jane F.
Ypsilanti
Early Elementary
Delta Sigma Epsilon

Moseley, Richard T.
Detroit
Physical Education
Arm of Honor, Phys-
ical Education Club,
Varsity Club (Pres.),
Varsity Baseball, Foot-
ball, Basketball

Natelli, Margaret F.
Belleville
Early Elementary

Natelli, Nicholar W.
Belleville
Junior-Senior High

Nelson, Betty J.
Allen Park
Special Education
Choral Union

Nelson, Marilyn
Occupational Therapy
Sigma Nu Phi, Normal
News, Catalina Club,
W.R.A.

Neuman, Phyllis J.
Detroit
Early Elementary
Delta Sigma Epsilon,
Kappa Delta Pi, Stoics,
Lambda, Iota Tau,
Aurora—Editor, Vice
Pres. of Sophomore
Class, Gamma Delta,
Women's League Eng-
lish Club, J-Hop Com.,
Senior Ball Com., Soph
Swirl—Chairman

Nicita, Joe
Taylor Center
Junior-Senior High
Sigma Tau Gamma,
Inter-Fraternity Council,
Math Club

Nutt, Thomas J.
Royal Oak
Business Education
Phi Delta Pi, Pi Omega
Pi, Newman Club,
Men's Union, Business
Club, Basketball, Fra-
ternity Athletics,
Homecoming Com.

Ostrander, Leona J.
Mt. Morris
Early Elementary
Kappa Delta Pi
(Treas.), Stoic (Vice
Pres.), Aurora, Good-
ison Hall Social Chair-
man

O'Toole, Pat D.
Business Admin.
Kappa Phi Alpha

Paone, Frank
Detroit
Business Education
Alpha Gamma Upsilon,
Newman Club, Busi-
ness Club, Men's Union





Parr, John W.
 Music Education
 Zeta Chi Sigma, Phi
 Mu Alpha, Band,
 Choir, Choral Union

Perry, William D.
 Harbor Springs
 Physical Education
 Delta Sigma Phi, Cross
 Country, Track

Peters, Christine H.
 Mt. Clemens
 Early Elementary
 Kappa Delta Pi

Peterson, Annette S.
 Detroit
 Art Education
 Homecoming Com.,
 Student Council

Peterson, Betty J.
 Chicago, Illinois
 Early Elementary
 Student Council, Wom-
 en's League Advisory
 Board, W.R.A. Social
 Chairman, Women's
 League Social Chair-
 man, Homecoming
 Queen (1952), Dormi-
 tory Counselor

Peterson, Gary H.
 Traverse City
 Alpha Gamma Upsilon,
 M.S.N.C. Players

Pivarcik, Robert C.
 Ypsilanti
 Later Elementary
 Phi Gamma Mu, New-
 man Club

Plousos, Mary Diane
 Pontiac
 Early Elementary

Pogliano, Ray
 Highland Park
 Physical Education
 Kappa Phi Alpha,
 Basketball

Pond, Norma J.
 Pontiac
 Early Elementary
 Sigma Sigma Sigma
 (V. Pres.), Class Sec-
 retary (3 yrs.), Dorm
 Secretary, Women's
 League (Treas.)

Potter, Dolores Ann
 Willis
 Occupational Therapy
 Kappa Mu Delta

Powers, Neal F.
 Ann Arbor
 Natural Science
 Sigma Tau Gamma

Priestaf, Carol A.
 Detroit
 Early Elementary
 W.R.A. Tennis, Lu-
 theran Students Asso-
 ciation

Prichard, Mary J.
 Britton
 Later Elementary

**Pyle, Evelyn
 Macdowell**
 Ypsilanti
 Music Education
 Mu Phi Epsilon





Raabe, Janice A.
Morenci
Special Education
Delta Sigma Epsilon,
Special Education
Club, English Club

Reid, Helen Marie
Emmett
Early Elementary
Delta Sigma Epsilon,
Newman Club, Eng-
lish Club

Roberts, Walter F.
History



Rabe, Ruth V.
Dearborn
Art
Social Chairman—
Goodison Hall, Wom-
en's League Advisory
Board

Reinicke, Robert
Eugene
Horton
Junior-Senior High

Robinson, Georgann
Davison
State Limited
Home Economics Club,
State Limited Club,
Modern Dance Club



Radike, Ardith J.
Occupational Therapy
Occupational Therapy
Club

Reiser, Thomas C.
Carleton
Retailing
Kappa Phi Alpha

Roe, Mae Josephine
Iron River
State Limited
Delta Sigma Epsilon,
Newman Club, Libra-
ry Chairman of Jones
Hall



Radtke, Hilda H.
South Haven
Special Education
English Club, Luther-
an Gamma Delta, Li-
brary Club

Reske, Martha M.
Junior-Senior High
Math Club, W.R.A.,
Lutheran Students
Association

Rowland, Robert E.
Allan Park
Recreation
Phi Sigma Epsilon,
Sigma Delta Psi,
Track, Cross Country,
Pres. of Junior Class,
Sec. of Varsity Club,
Sec. of Physical Ed.
and Recreation, Pres.
of Men's Union



Ranck, Merry L.
Stockridge
Early Elementary
Sigma Nu Phi, O.T.
Club, Wesley, Modern
Dance Club, Freshman
Counselor, Campus
Sister

Rice, George L.
Ypsilanti

Ruge, Elizabeth J.
Lake Orion
Early Elementary
Choral Union, New-
man Club





Russell, Nancie J.
Junior-Senior High

Scherer, Joan L.
Grosse Pointe
Early Elementary
Alpha Xi Delta, Dormitory
Advisory Board, Sophomore
Class Treasurer

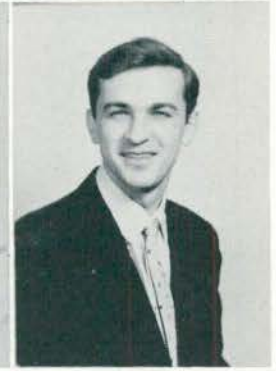
Schultz Ruth Evelyn
Freeland
State Limited



Rutherford, Verne G.
Detroit
Early Elementary
Delta Sigma Theta,
Women's League, Dormitory
Advisory Board, Dormitory
House Council

Skubik, Chester
Detroit
Junior-Senior High
Phi Delta Pi

Scott, James Carl
Dearborn
Business Admin.



Salles, Lucy A.
Ann Arbor
Special Education
Sigma Nu Phi, Freshman
Councilor, Special Education
Club, I.C. E.C.

Smith, Daniel W.
Occupational Therapy
OT Club

Smith, Dolores E.
Snover
Special Education
Special Education
Club, Inter-National
Council of Exceptional
Children (ICEC)



Saunders, Richard J.
Ypsilanti
Industrial Arts
Zeta Chi Sigma, Track
(1), Industrial Arts
Club, Wesley Founda-
tion

Smith, Donnie Jr.
Ann Arbor
Special Education

Smith, Edwino
Farmington
State Limited
C.Y.F.



**Sawyer, Mary
Katherine**
Port Huron
State Limited
Sigma Nu Phi, Canter-
bury Club, English
Club, State Limited
Club

Smith, Louis W.
Grayling
Business Education

Smith, Mae M.
East Moline, Illinois
Occupational Therapy
Alpha Kappa Alpha





Smith, Margaret
Battle Creek
Early Elementary

Smith, Sara L.
Grayling
Art

Smith, YvonneJoyce
Flint
Junior-Senior High
Modern Dance Club

Snider, Mary L.
Ann Arbor
Later Elementary
Gamma Delta, M.S.
N.C., Band

Sonoc, Kathleen
Kenney
Willow Run
Later Elementary
Newman Club, Gavel
and Rostrum

Sole, Shirley
Whitney
Art
Alpha Sigma Tau (V.
Pres.), Women's
League, Aurora, Stud-
ent Organization Com.

Southgate, Robert S.
Ypsilanti
Junior-Senior High

Sowers, BarbaraJean
Livonia
Physical Education
W.R.A., Bowling Man-
ager, Physical Educa-
tion Club

Sowers, Janet S.
Farmington
Early Elementary
C.Y.F.

Spade, Charles Ivon
Ypsilanti
Fine Arts

Spring, Herbert J.
Ann Arbor
Industrial Arts

Stallard, Richard W.
Ypsilanti
Special Education
Zeta Chi Sigma, Phi
Mu Alpha, Special Ed-
ucation Club, Choral
Union

Staplin, Marvin
Glenn
Ypsilanti
Recreation
Physical Education,
Recreation Club(Pres.)
Student Court, Band,
Arm of Honor

Stevens, James H.
Social Work
Phi Sigma Epsilon,
Catalina Club, Roose-
velt Swimming Coach,
Tennis

St. Germaine, Robert J.
Detroit
Special Education
Sigma Tau Gamma,
Student Veteran's Or-
ganization, Special
Education Club, His-
tory Club





St. James, Gerald L.
Ludington
Business Education
Pi Omega Pi

Stralnic, Gustave G.
Milan
Occupational Therapy
OT Club (V. Pres.),
MSNC Band

Strohl, Aloyce M.
Later Elementary
Alpha Xi Delta, Women's
League Advisory
Board, Jones House
Council

Struble, Merlyn K.
Industrial Arts
Sigma Alpha Delta,
Industrial Arts Club

Sventko, Joe
Flint
Special Education
Phi Delta Pi, Inter-
Fraternity Council
(Sec.)

**Swarson, Patricia
Ann**
Saline

**Swartz, Lois Jean
Ida**
State Limited
Inter-Varsity Christian
Fellowship, State
Limited Club

Takara, Kenji
Ann Arbor
Mathematics
Math Club

Thomkins, Jane C.
Special Education
Kappa Mu Delta,
Stoic

**Thompson, Ann
Fahey**
Detroit
Early Elementary
Newman Club, Good-
ison House Council

Trotter, Geraldine
Hamtramck
Occupational Therapy
Delta Sigma Theta,
W.R.A., Panhellenic,
Newman Club

Turner, Garvella
Detroit
Secondary Education
Alpha Kappa Alpha,
English Club, Gavel
and Rostrum

Tysse, Dora V.
Holland
Early Elementary

Valencourt, Jo Ann
Bear Lake
State Limited
Inter-Varsity, State
Limited Club

**Van Wagoner,
Janet L.**
Early Elementary





Van Winkle, David L.
Trenton
History



Vaughn, Della R.
Later Elementary
Alpha Kappa Alpha
(Corr. Sec.)



Verhoeven, Gertrude
Monroe
State Limited
Newman Club



Waara, Eino William
Detroit
History



Wade, Barbara J.
Detroit
Special Education
Delta Sigma Epsilon
(V. Pres.), Women's
League Executive
Board, Women's
League Advisory
Board, Special Educa-
tion Club, Dorm House
Council, Freshman
Class Chairman, Stud-
ent Council, M.S.N.C.
Players

Wahl, Shirley Mae
Auburn Hts.
State Limited

Wallace, W. Donald
Mathematics
Kappa Delta Pi,
Mathematics Club



Wasco, Robert V.
Saginaw
Business Admin.
Phi Sigma Epsilon,
Business Administra-
tion Club

Watson, Darrel G.
Ypsilanti
Junior-Senior High
Zeta Chi Sigma, Na-
tural Science Club



Weldon, Eva C.
Ecorse
Business Education
Alpha Kappa Alpha,
Business Club, Pan-
hellenic Council (Corr.
Sec.)

Wendling, Donald H.
Lexington
Business Administra-
tion & Education
Phi Delta Pi, Business
Club, Varsity Club



Wendt, Richard W.
Wixom
Industrial Arts
Sigma Tau Gamma,
Industrial Arts Club,
Cross Country, Track

Weeks, Marilyn A.
Dearborn
Special Education
Delta Psi Omega, Spe-
cial Education Club



Weide, Franklin R.
Bay City
Business Admin.
Phi Sigma Epsilon,
Gamma Delta, Busi-
ness Club, Intramural,
Inter-Fraternity sports

West, E. JoAnne
Webberville
State Limited
State Limited Club
Players





Weyer, Judith
Dearborn
Art
Christian Youth Fellowship, W.R.A.



Wheeler, Ann A.
Muskegon
Early Elementary
Sigma Nu Phi



White, Phyllis Baldwin
Wyandotte
Music Education
Stoics, Mu Phi Epsilon, Choral Union



White, Thomas
Wyandotte
Junior-Senior High
History Club, Football



Wilgus, Carl R.
Lansing
Industrial Arts
Delta Sigma Phi, Industrial Arts Club, English Club, History Club, M.S.N.C. Players, Brown Dorm (V. Pres.), Orientation Com., Homecoming Com., Senior Musicals

Williams, Dale L.
Concord
Pre-Medical
German Club, Chemistry Club, Natural Science Club

Williams, Mary Yvonne
Port Sonilac
State Limited
Pi Kappa Sigma



Wilson, Harlous B.
Music Education
Phi Mu Alpha Sinfonia, Normal Choir

Wilson, Ruth B.
Flint
Early Elementary
Delta Sigma Theta



Winter, Francis Eugene
Pittsburgh, Penna.
Later Elementary
Newman Club, International Relations Club

Wood, Marlene Eleanor
Dafer
Junior-Senior High
Freshman Class Secretary



Woodworth, Bill Harry
Muir
Music
Phi Mu Alpha, Sinfonia, Band, Orchestra, Stoics

Woodruff, Esther
Leora
Ypsilanti
State Limited
State Limited Club



Wright, Grantland, P.
Fenton
Junior-Senior High
Tau Kappa Epsilon, Alpha Phi Omega, Junior Chamber of Commerce

Young, Mary Bayle
Special Education
Sigma Sigma Sigma (Sec.), Stoics, Kappa Delta Pi, Spanish Club, Special Education Club





Zickel, James P.
Economics
Delta Sigma Phi
(Pres.), Student Court,
Baseball

**Zimmerman,
Frank R.**
Business Admin.
Business Club

Zizzi, Joseph P.
Business Admin.
Delta Sigma Phi, Var-
sity Football, J. Class
(V. Pres.), Sr. Class
(V. Pres.)

Zoeplitz, Evelyn C.
Mt. Clemens
Music Education
Mu Phi Epsilon, Chor-
al Union, Freshman
Ensemble, College
Choir, Operetta, Music
Co-chairman of King
Dorm, Senior Musicals

Camera Shy

Andrews, Marion E.
Averill, Bernice
Babcock, Flora N.
Blair, George
Blank, Jessie C.
Boelter, DeEtti
Boots, Chester O.
Broad, Barrett J.
Brune, William
Cornell, Grant A.
DeRose, Dominic
Dickerson, Helen L.
Downey, Dona
Dragoo, Donald
Ethrige, James
Ford, Jean S.
Geiermann, Mary Alia
Golezynski, Eleanor V.
Goodwin, Robert S.
Hafer, Robert B.
Hamilton, Henry
Hamilton, Theresa
Harrison, Myrtle J. (Mrs.)
Hartwig, Marie E.
Height, Antoinette L.
Higgins, Hazel M.
Holmes, John C.
Hunt, Joan M.
Illi, Ronald J.
Jacquin, Don G.

Judson, Helen G.
Keith, David G.
Kent, Mary S.
Kirksey, Daniel W.
Lirette, Beverly A.
Luce, Harry J.
Maas, Marion
Many, Martha
McCrum, Bernadette
McMullan, Lorraine
Middlekauff, Robert K.
Miller, Dorothy T.
Nowland, Richard
Orve, Jim C.
Pearson, Cecyl
Petrie, Iris M.
Pierce, Shirley L.
Ranger, Helen L.
Robb, David J.
Rooke, Karen J.
Russell, Dean A.
Schuler, Virginia C.
Shirley, Wanda B.
Sisson, Jerry K.
Tisch, Patricia K.
Todd, Robert J.
Vanek, Richard S.
Walsh, Agnes G.
Wilcox, William D.
Wills, Edward R.

Index

Alpha Gamma Upsilon	111	Math Club	16
Alpha Kappa Alpha	101	Men's Union	97
Alpha Sigma Tau	102	Modern Dance Club	76
Alpha Xi Delta	103	M.S.N.C. Players	60
Arm of Honor	112	Mu Phi Epsilon	39
Aurora Staff	30	Natural Science Club	28
Band	37	Newman Club	67
Basketball Team	86	Normal News	121
Baseball Team	92	Occupational Therapy Club	54
Business Club	43	Omega Phi Psi	115
Canterbury Club	68	Orchestra	37
Centro de Espanol	51	Panhellenic Council	100
Cheerleaders	80	Phi Mu Alpha Sinfonia	40
Chemistry Club	26	Phi Sigma Epsilon	116
Choral Union and Choir	36	Physical Education Club	77
Christian Science Organization	69	Pi Kappa Delta	22
Christian Youth Fellowship	66	Pi Kappa Sigma	107
Cross Country Team	84	R.O.T.C.	46
Debate Club	17	Senior Class Officers	146
Delta Sigma Epsilon	104	Sigma Nu Phi	108
Delta Sigma Phi	113	Sigma Sigma Sigma	109
Delta Sigma Theta	105	Sophomore Class Officers	99
English Club	19	Special Education Club	55
Football Team	86	State Limited Club	18
Freshman Class Officers	99	Stoics	71
Gamma Delta	64	Student Activities Committee	98
Golf Team	90	Student Council	94
Home Economics Club	45	Student Court	94
Human Relations Club	48	Student Religious Association	62
Industrial Arts Club	34	Tau Kappa Epsilon	118
Interfraternity Council	110	Tau Sigma Chi	119
Inter-Varsity Club	63	Tennis Team	91
Junior Class Officers	99	Track Team	88
Kappa Delta Pi	23	Wesley Foundation	70
Kappa Mu Delta	106	Women's League Executive Board	95
Kappa Phi Alpha	114	Women's League Advisory Board	95
Lambda Iota Tau	21	Women's Recreation Association	74
Library Club	50	Zeta Chi Sigma	120
Lutheran Students Association	65		

