

The

1956

Aurora

The 64th Edition

Published by the student body
of Michigan State Normal College.

Jane VanderMeerEditor

Violet CushnackBusiness Manager

Florence AmbroseActivities Editor

Claudette PittonArt Editor

Photography by Rosemary Lawrence, the Audio-Visual Department and
McClure's Studio.



MICHIGAN STATE
NORMAL COLLEGE



FOUNDED 1849

PRESENTED BY
CLASSES OF
1949-1950-51



Charles McKenny Hall

CONTENTS

Campus Impressions	4
Administration	13
Student Government	19
Clubs and Organizations	31
Honorary, Professional, and Service Fraternities	63
Social Fraternities	69
Athletics	95
Homecoming	117
Features	121
Classes	125
Seniors	131
In the Future	157
Index	171



Pierce Hall



Pierce Hall is situated centrally on campus and forms one of the three buildings around the Mall. Pierce houses the offices of President Elliott, the Deans, the administrative officers, and their staffs.

It is also the home of the English, speech, mathematics, and education departments. Few students will go through Normal without spending many hours in this building.

The insert: a Pierce class meets outdoors.

The Arts building is opposite Pierce Hall and is the second of three central buildings. It houses the fine arts department; which, besides classes, sponsors many exhibits in the gallery.

The industrial arts department is also situated here along with the duplicating office and the Audio-Visual Aids Department.

The insert is a picture of an advanced sculpture class.



The Library

The library is the third building in this group. The library, science and foreign language departments are located in this building.

The Library co-operates with all departments by providing students with the information needed to complete their assignments.

The insert is illustrating the use of reference material in the library.



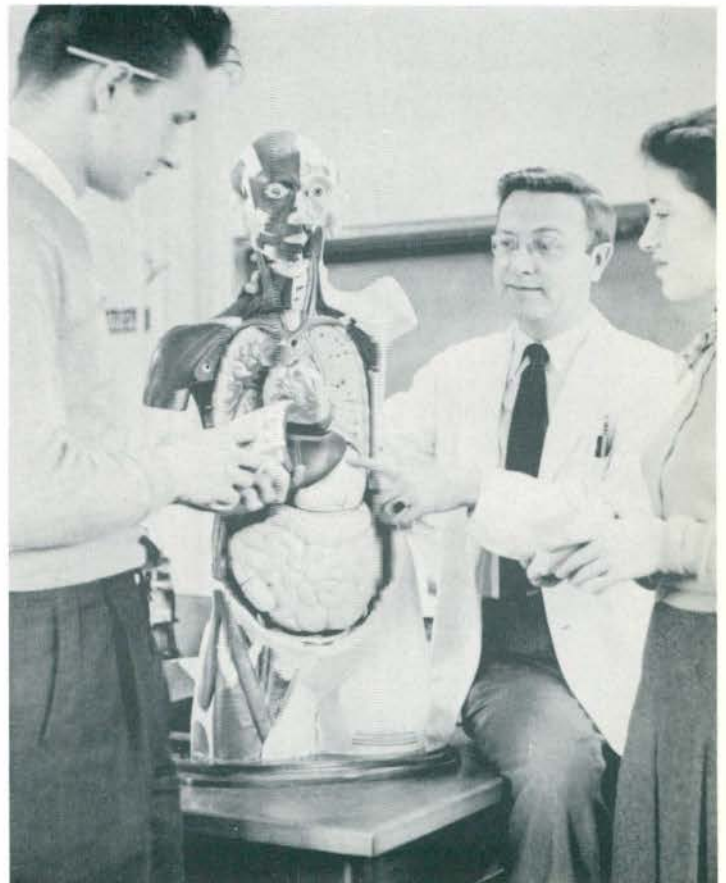
The Arts Building



The Science Building

The Science Building is one of the oldest structures on campus. It is in this building that the natural science, chemistry, and physics Departments are located. Astronomy is also offered and students can do much here to satisfy their scientific curiosity.

Dr. Johnson of the Natural Science Department, is illustrating a phase of human anatomy to two of his students.





Hover

Hover and the adjoining greenhouse offer many opportunities to study plant life and to apply the student's knowledge.

Roosevelt and many art classes use these buildings for art sketches and research work.

Welch Hall is perhaps the busiest of all the buildings. Here, the departments of history, sociology, political science, military science, business education, and home economics are located. The auditorium is also used during orientation and small assemblies.

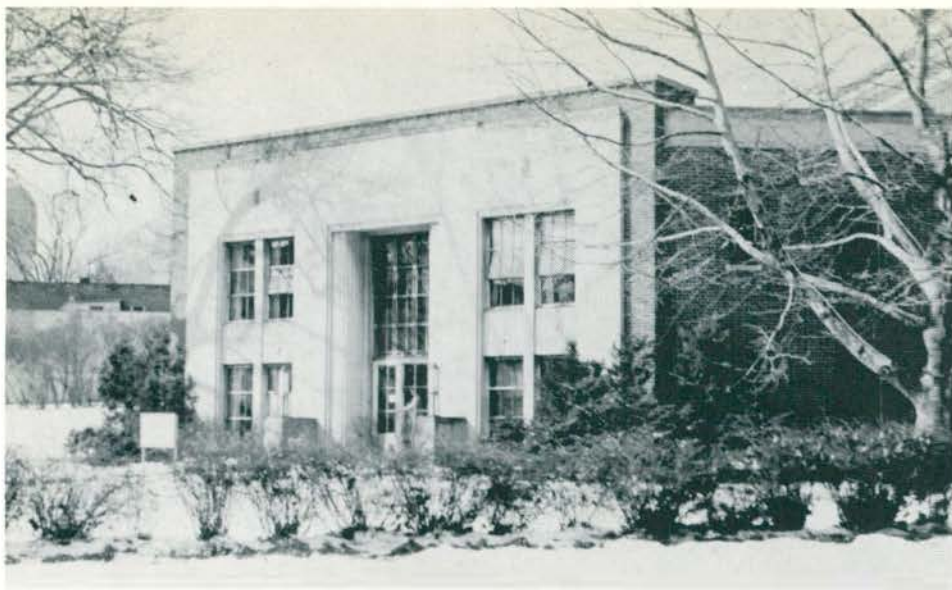
The insert is a picture of the home management house, where all students of home economics must spend one semester.



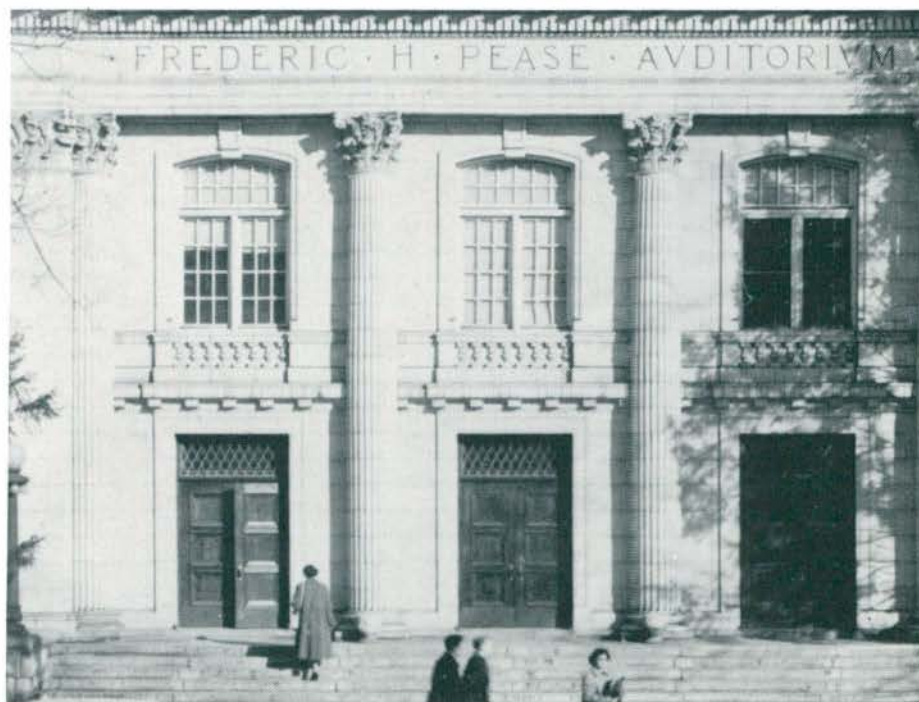
Welch Hall



The home management house.



The Health Residence.



Pease auditorium.

Pease auditorium is the home of the music department. Practice rooms are provided for students of both vocal and instrumetal music.

Pease also serves the school by having concerts and assemblies throughout the year.



The Gym

The gymnasium provides facilities for the physical education department and recreational equipment for all students on campus.

The Walter O. Briggs fieldhouse provides training area and locker space for the football team. Situated next to the stadium, Brigg's fieldhouse is one of the more familiar buildings on campus.



Briggs Field House

Bowen Field House

Dedication of the Wilber P. Bowen Field house was held on Saturday, the third of December.

This fieldhouse is one of the largest buildings of its kind in the country and one of the most heavily used. It provides facilities for intercollegiate competition in basketball and indoor track. Practice for these two sports and baseball can be carried on simultaneously in the structure.

The arena measures 315 feet long and 180 feet wide. The removable basketball floor is laid crosswise in the arena. Permanent seating for 1500 is provided and movable bleachers for another 6,000 can be raised.

There are eight laps to a mile on its indoor track. Included in its facilities are a lounge, a physical therapy treatment room, a lecture hall, a projection room, locker rooms, and offices for the coaches.

The dedication ceremonies consisted of an open house, a formal dedication, a dinner, and then a basketball game. We played Ball State Teacher's College and lost by the close score of 77 to 61.



An exterior view of Bowen.



President Elliott accepting the fieldhouse on behalf of the college.



A view of the speaker's platform from the stands.



Discussing the dedication ceremonies are: (left to right) Milo F. Ohr a representative of Giffels and Valler-Rosetti Associates, Dr. Olds, State Representative Warner, and James E. Green, Assistant to the President.



Ball State taking a "free throw" during the game.



We dedicate



In dedicating the 1956 Aurora to Professor Egbert R. Isbell, the editors of the Aurora wish to mark down and recognize his many years of dedicated service to the students of Michigan State Normal College. It seems fitting that this year when the college stands on the threshold of an era of expansion and growth that we should recognize a man in whose person so many of the virtues of the college are summed up, and by whose thoughts and accomplishments so much of the groundwork for future growth has been laid.



President Elliott

Dr. Eugene B. Elliott first assumed his duties of President of Michigan State Normal College in July of 1948.



Dean Lawrence

Dr. William Lawrence was appointed to the position of Dean of Student Affairs effective January 1, 1956. Under this post are the Offices of the Dean of Men, Dean of Women, the Registrar and Director of Admissions, Placement, the College Health Service, and the Testing and Counselling Services of the college.



Dean of Instruction, Bruce K. Nelson, advising a student.



Dean Brown

A familiar and much loved person on the campus is Dean of Men, James "Bingo" Brown. The devotion to the college and to his "boys" will long be remembered by those who have attended this institution.



Dean Hill

The women of Michigan State Normal College have a great friend in their Dean, Susan B. Hill. She is sincerely concerned with the women on campus and is always willing to help anyone with their problems.

g-o-v-e-r-n-m-e-n-t
s-t-u-d-e-n-t



Student Council



The receiving line at one of the student council functions.



Besides being the government body the student council also contributes to the campus social life as well.



ROW 1: D. Ferguson, E. White, M. O'Toole, B. Rose, J. Zitny, T. Metzdorf, G. Yates, J. Bowen, J. Malin, B. Fates.

ROW 2: J. Thompson, M. Lemmer, D. Root, (Treas.), M. Gambill (Sec.), R. Bridge, (Pres.), J. Hurbis (Vice Pres.) W. Spencer, M. Cheatle.

Student Social Committee

Made up of representatives from Student Council, Men's Union and Women's League, this important committee helps to plan and coordinate student social life on the campus.



SEATED: D. Larsen, D. Burrell, D. Borwick, E. Kitson.
STANDING: Dean Hollis (Advisor), M. Sherfer, C. Conklin.



Student Court

SEATED left to right: R. Diaz, J. Whitney, I. Trinkle, D. Tarbuton, H. Price.

Women's League Advisory Board



SEATED: P. Mann, A. Hosie (chairman), E. Brown, J. VanderMeer.
STANDING: J. Whitney, S. Haddix, A. Arlen, D. Picard, and E. Tyrrell.

The Women's League of MSNC was organized in 1919. It is an organization to which all women students belong upon registration in the College. Its purposes are to provide a means by which women students may participate in student government; to provide an opportunity for membership in group activities; to work with fellow students and faculty in maintaining high standards in college life; and to provide opportunities to practice techniques of friendliness, leadership, cooperation and democracy.

Women's League Representatives



ROW 1: M. Taylor, M. Constat, B. Rydholm, J. Petzold, L. McKay, I. Olah, J. Pike, L. Toffoli.
ROW 2: L. Spicuzza, A. Nolan, A. Hosie, Dean Hill, Dean Ruder, S. Davis, J. Werner, M. Searles.
ROW 3: J. Wilson, J. Lindeman, P. Breuninger, P. Ernst, D. Karsetter, K. Northrup, M. MacDonald,
B. Lowey, E. Lentz, J. Bates.

The Men's Union

The Men's Union is an organization comprised of all the men students at MSNC. The 17 man executive board meets every other Wednesday evening to discuss and promote ways to help better college life.

The 1955-56 Union enjoyed another successful year. The Union's main functions; the Class Games, the Yule Log Drag, and the All-Sports Banquet were attended and enjoyed by everyone. Other minor projects were also planned and carried out by the Men's Union.

Dean of Men, James M. Brown and Assistant Dean of Men Floyd Lamiman are advisors to the organization. President for the year was Don Kleinsmith with Wayne Spencer serving as vice-president. Don Sample and Bill Graham were secretary and treasurer, respectively.



ROW 1: B. Graham, D. Kleinsmith, W. Spencer, D. Sample.

ROW 2: Mr. Lamiman, J. Thompson, D. Sloan, J. Kropfeld, J. Kitson, D. Larson, L. Marco, P. Jablonski, B. Rose, P. Brossia, and T. Metzdorf.

MISSING: E. Kleinsmith.

Festive Activities on Campus



Santa's got a gift for everyone.



The gala Yule Log Drag sponsored by the Men's Union host the student body.



A moment to remember.

A cheery greeting to all from the Man himself.

The Women's League annual Campus Social.





HOUSE COUNCIL

ROW 1: F. Donamacker, R. Eppler, W. Rose, Mr. Lamiman, W. Spencer, D. Burrell.
ROW 2: D. Sloan, R. Appleton, M. Groves, B. Forc, P. Jablonski, D. Sample, K. Kelly, T. Anderson, D. Kleinsmith.



Wayne Spencer and Ray Mackey—scholarship winners, are congratulated by Mr. Brownrigg, and Mr. Currie.



Dorm Dance



HOUSE COUNCIL

ROW 1: J. Sachs, J. McIlrath, C. Condle, A. Jenki, P. Jesiek, L. Parker.
 ROW 2: R. Chowen, L. Thackham, Miss M. Herrick, Mrs. C. Wigle, M. Bowe, A. Leslie.
 ROW 3: M. L. Ranspach, D. Poet, J. Malin, G. Hamilton, J. Wagner, V. Krobloek, J. Greenwood, J. Marx.



GODDARD'S SENIORS

ROW 1: K. Sugiyama, E. Kamigaki, Mrs. Wigle, Miss Herrick, E. Kimura, C. Cocroft
 ROW 2: B. Saqamang, B. Poole, J. Ford, C. Collier.



Goddard's Float.



HOUSE COUNCIL

ROW 1: A. Hasler, K. Griffith, M. L. Lemmer, M. Stelzer, M. J. Searles, E. Brown, S. Clancy.
 ROW 2: E. Addis, L. Toth, Miss Carson, P. Breuning, Sec.; K. Clark, V. Pres.; J. Chadbourne, Pres.; B. Nelson, Treas.; F Shimada, Miss Jones, M. Broge.
 ROW 3: M. O'Toole, J. Chiravola, J. Jelacsity, H. Thompson, D. Osgood, L. Tyrrell, J. Dulmage, P. Craver, L. Janicki, J. Dwyer, M. Taylor, L. Rehberg, C. Hallgren.



Gold Diggers

Open House





HOUSE COUNCIL

ROW 1: V. Leverton, N. Wangberg, S. Haddix, S. Lillis.
 ROW 2: B. Hyde, P. Eslinger, N. Nobles, G. Mrystik.
 ROW 3: B. Bates, J. Malin, I. Docherty, N. Flanders, A. Weintraub, L. Davenport, J. Mader, J. Wilson.

Time Out For a Song



K
I
N
G

R
E
S
I
D
E
N
C
E



ROW 1: D. Temple, I. Trinkle, B. Stamos, J. Anderson, J. Sanderson.
 ROW 2: P. Lutz, J. Hood, B. Gaylord, L. McKay, J. Werner, L. Parker, P. Spehar.
 ROW 3: M. Whitney, A. Rice, E. Lentz, M. Janter, M. Drake, H. Millar, J. Kirk, E. Trumbull.

Halloween Party



Toni Triplets





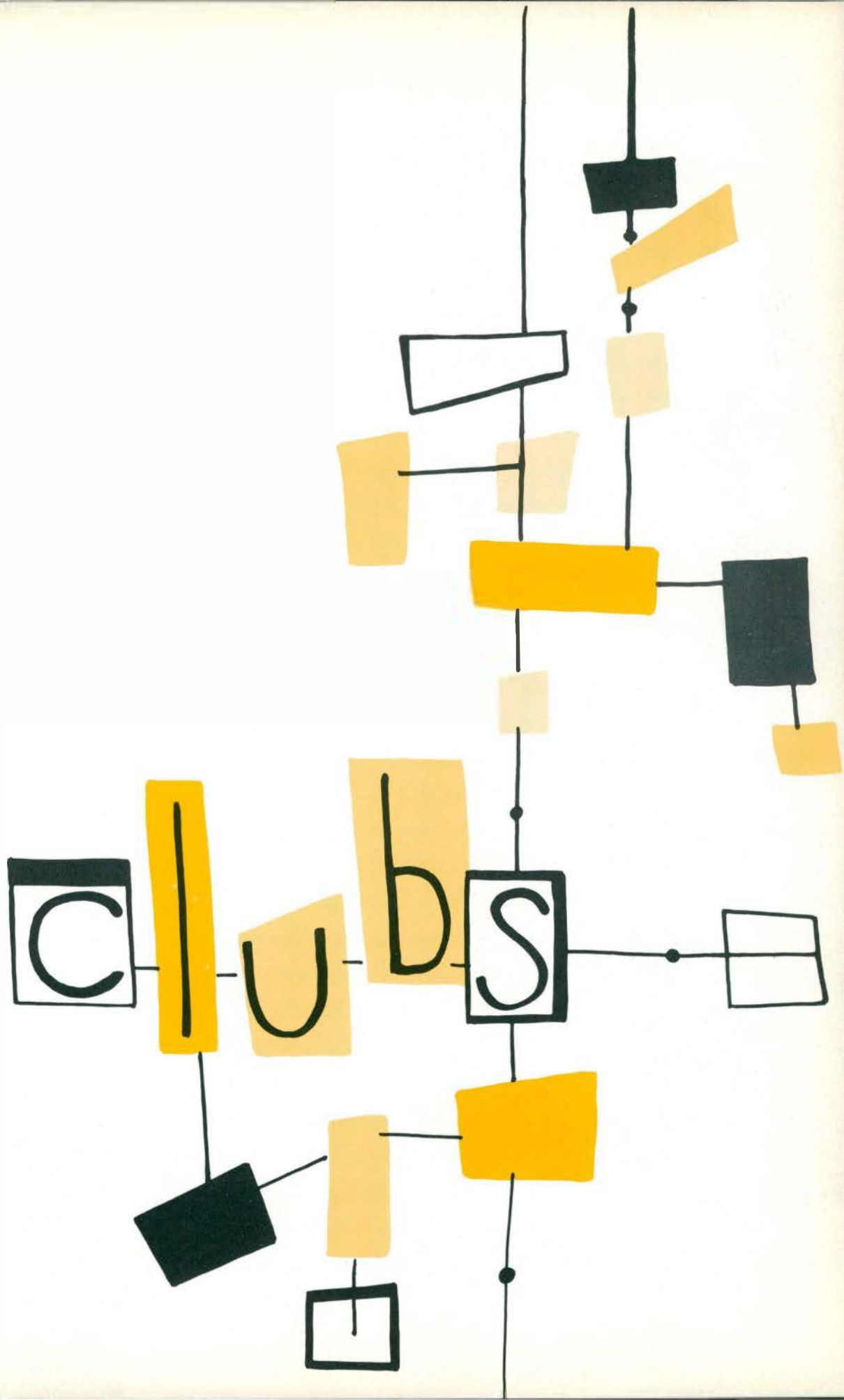
HOUSE COUNCIL

ROW 1 L. Deibel, L. Johnson, J. Whelan, T. Alford, N. Sobolewski
 ROW 2 J. Thompson, J. Margitan, M. Lichtenstein, D. Roe, R. Mackay
 ROW 3 R. Diaz, R. Brewer, G. Yates, J. Pickell, E. Smith, F. Wyer, F. Piccinni, T. Walker.



Munson Brown Scholarship Dinner







Art Guild



Centro de Espanol



Chemistry Club

ROW 1: C. Stoneking, L. Endahl, E. Andre, E. Begola, A. Hill, B. Stamos, C. Pitton.

ROW 2: H. Decker, J. Tyson, A. Witt, R. Batalucco, R. Berger.

ROW 3: R. George, R. Warren, J. Everard, Q. Tyler, P. Lumetta.

The Art Guild, a new student organization, was formed in the fall semester, 1955, for all art majors. The meetings are held bi-monthly on Wednesday evening.

The Guild's activities have been an exhibit of students' work in Zwergel's window, the "coffee corner" in the gallery of the Arts Building, and the painting of flats used by the Catalina Club for their water show.

The officers are: Eileen Andre, President; Hilton Decker, Vice-president; Larry Everard, Treasurer; Roseanne Batalucco, Secretary.

ROW 1: Y. Rima, R. Puche, F. Villegas, H. Beuschlein.

ROW 2: J. Roberts, T. Olmedo, R. Ortez, B. Nichols, M. Murcia, N. Gordon, O. Tones, H. Treuino, M. Montenegro, D. Hart.

ROW 3: E. Signoret, J. Robbins, J. Cortes, S. Knutson, P. Davis, M. Orantes, J. Reines.

The Spanish Club, or Centro de Espanol, is composed of students studying Spanish, as well as Latin American students enrolled at M.S.N.C. The organization, under the guidance of Mr. Villegas, strives to improve the conversational ability of the students and to further their knowledge of Spanish customs.

A variety of films, several guest speakers, skits, music, and games in both Spanish and English provided entertainment for the bi-weekly meetings.

The president for the year was Roy Beuschlein; vice-president, Roberto Puche. The office of secretary-treasurer was filled by Yamal Rima.

ROW 1: J. Bogoyan, B. Watts, D. Moreau, A. Eraybar, A. Alchalabi, I. Hallaq, D. Hartman, G. Kassabian.

ROW 2: C. Anderson, V. Anderson, P. Brundage, J. Holzimmer, T. Gormely, J. Armstrong, P. Clark, E. Lamkin, J. Sellers, C. Canizales.

ROW 3: H. Nass, J. Salow, W. Walanis, J. Winkley, J. Rowe, S. Mohamed, C. Welle, R. Eppler, W. Jamieson, M. Minick, J. Dina.

This year marked the 46th anniversary of the Chemistry Club which was held in January of this year. Dr. Walter Whitehaus of the University of Michigan spoke at this meeting on Radiology.

The officers for the year were Theresa Gormley, President; Jerry Holzimmer, Vice-president; Joyce Armstrong, Secretary-treasurer. The patron is Dr. Perry S. Brundage and the advisor is Dr. Melvin Carr.



Der Deutsche Verein



English Club



Future Business Leaders of America

ROW 1: C. Taylor, C. Stiles, C. Sauter, E. Mendelsohn, R. Barrow, P. Bennet.
ROW 2: J. McIlrath, D. Hartman, J. Winkley, L. Ackerman, C. Irwin, M. Schiefer, R. Liebenthal, J. Bates.
ROW 3: B. Kaiser, A. Eardley, A. Neering, S. Brown, T. Wright, C. Welle, J. Robbins, L. Curtis, B. Gretzinger, H. Babbitt, M. Smirnovs.

ROW 1: M. Ryan, C. Mastori, C. King, J. Smith, R. Valentine, J. Chiravola, M. L. Richards, V. Curtindale.
ROW 2: M. Foster, T. Jacobsen, M. Clark, K. Frye, M. Barden, E. Livingway, M. Fundukian, M. Coutilides.

ROW 1: A. Donnelly, D. Mandt, S. Davis, J. Baughman, M. White, D. Payne, A. Sparks, T. Courtright.
ROW 2: B. McDonald, D. Tenney, R. Leck, N. Tucker, K. E. Lucas, P. Peters, G. Johnson.
ROW 3: D. Duttle, G. Culver, H. Surtman, D. O'Hara, G. Pelaez, B. Heck, K. Furton.

The German Club, a newly organized club on campus this year is open to all students interested in the study of the German language and culture. Meetings are informal, where guest speakers are often present, relating their experiences, by film and conversation, on their trips to Germany. The club has a wide variety of functions, mainly to get students interested in the ways of other peoples across the seas, their modes and customs.

Dr. Herbert J. Gauerke, the club's advisor, contributed much to the formation of the German group.

The English Club is dedicated to establishing a closer relationship between the students and faculty. This is accomplished, in part, through the media of discussions, outings, and lectures which are designed to be entertaining as well as intellectually challenging.

Programs this semester included trips to Ann Arbor, a reading of a contemporary radio play by present and former students, a concert of folk ballads by Nardi Nance, and a concert of Elizabethan music by the Music Department and the English Faculty.

The Future Business Leaders of America is an organization which is open to all students majoring or minoring in business education and business administration. The purpose of the group is to promote a professional interest in business and to foster friendship among the students. Meetings are held monthly and the programs under the leadership of student committees are varied to include social and business activities.

The officers for this year were: Noble Tucker, president; Ted Penny, vice-president; Pat Peters, secretary; and Ken Pennebaker, treasurer.



Future Teachers of America



History Club

ROW 1: C. Skinner, V. Stevenson, S. Petros, W. McQueen, M. Hutchinson, M. Velky, P. Sederlund, J. Sinift, M. Kawamoto, M. Smirnovs, H. Surtman.
ROW 2: L. Sewell, J. Roberts, P. Oxender, A. Sparks, E. Innes, J. Kuhl, E. Darago, N. Gamble, S. Poling, M. Munro, H. Grice, J. Marcetti, R. Steward.

Since this is the first year on campus, the club is proud of its high membership. Dr. Robert Fisher, the advisor, has been extremely helpful in the club's organization and activities.

Through F.T.A., students who plan to be teachers have an opportunity to meet together, discuss, and learn more about their field of study.

The officers for the year are: Shirley Eichbrecht, President; Shirley Hawkins, Vice-president; Marilyn Howell, Secretary; Gene Gulish, Treasurer; and Juanita Sinift, Historian.

ROW 1: L. Fokens, T. Peliotes, J. Volcheck, S. Snell, J. Rippetoe.
ROW 2: P. Beale, R. Mason, B. Tresh, S. Hawkins, S. Eichbrecht, M. Howell, E. Gulish, M. Dunn, D. Whitson.
ROW 3: D. Tenney, R. Boyce, M. Kellogg, J. Koppin, D. Rupp, C. Perugi, S. Seyferth, P. Jesiek, N. Dunbar, E. Faust, M. Miller, O. Benesh, U. Striebel, M. Taylor.

The year 1955-56 has been an active one for the History Club. Its fall activities began with the annual picnic in the hollow. During the semester, a guest speaker, Mrs. Sylvia Eiteman, from the University of Michigan, showed slides of the Far East and spoke of her interesting adventures while living in Ceylon. The History Club sponsored the movie of the 1949 Centennial at M.S.N.C. at the annual all-campus Christmas party.

The spring semester started with Miss Elizabeth Warren, club sponsor, showing slides of her summer tour of the New England states. Movies of South America and a debate over the guaranteed annual wage were also on the agenda. The highlight of the spring activities was the trip to the Archeology Museum at the University of Michigan. Election of officers to carry on in 1956-57 was accomplished at the final picnic in May which marked the end of the club's meetings for the year.

A successful year was achieved by the History Club under the guidance of its sponsor, Miss Elizabeth Warren, and its officers: Marvin Lichtenstein, president; Graham Provan, vice-president; and Maurine Fillmore, secretary-treasurer.

ROW 1: V. Schultz, L. Lambert, L. Sewell, V. Baker.
ROW 2: J. Marcetti, G. Provan, F. Warren, M. Lichtenstein, M. Fillmore, E. Warren, M. Weissert.
ROW 3: J. Holst, A. Nolan, D. Whitson, W. Durham, D. Ouellette, B. Rogers, R. Mason, D. Busksar.



Home Economics Club



Library Club



Math Club

All girls taking courses in the Home Economics Department have the opportunity to participate in the many activities sponsored by the Home Economics Club. The club, which is affiliated with the American Home Economics Association and the Michigan Home Economics Association, began this year with a picnic to welcome the new girls. Other activities of the semester included making and selling fruitcakes, a special dinner followed by showing of slides and narration by one of the girls who traveled abroad during the summer, and the annual Christmas Dinner at which parents of the members were honored guests. Activities for the second semester included a fun night, a trip to the Michigan Home Economics Association Convention in Saginaw, and a farewell party for graduating seniors.

Club officers are Belva Storey, president; Beverly Hugill, vice-president; Nancy Passfield, treasurer; Connie Briggs, secretary; Mary Lou Lemmer, reporter.

The Library Club of about 25 members offers a wide variety of activities for all those who have a special interest in the field of library service. The purpose of the organization is twofold: to build professional attitudes and to provide social activities. Highlighting activities this year was an exhibit, "Spotlighting the School Library," which presented materials illustrating the training of a librarian, and her role in elementary and secondary school life. Other activities for this school year included a Christmas party, an alumni dinner, talks on poetry and the art of story telling, and field trips to professional meetings of teachers and librarians and to various school libraries in the state.

Officers are: Stella Romanow, president; Alice Hachigian, vice-president; Beth Signor, secretary-treasurer. Miss Margaret Robinson is the sponsor.

The Mathematics Club this year had a wide variety of activities for students interested in math. It improves student relationships and gives the students and faculty a better chance to become acquainted. Activities this year included a fall picnic, discussions on the duodecimal system, numerical systems, high speed computators and algebra with 5 numbers.

The highlight of the year was the annual Christmas Party.

The officers at the helm for the year were: Nella Drake, President; Larry Prichard, Vice-President; and Dick Moreau, Secretary-Treasurer. Of able assistance serving as faculty sponsor was Mr. Hilton Falahee.

ROW 1: M. Chattman, N. Hettinger, M. Smith, A. Devendorf, M. Cunningham, P. Stinson, J. Sinift, S. Brown.

ROW 2: C. Kelly, M. L. Lemmer, C. Briggs, B. Storey, B. Hugill, N. Passfield, R. Wanty.

ROW 3: M. A. Moynes, S. Schroeder, L. Walker, J. Eschenburg, C. Hill, L. Leutheuser, D. Hollifield, M. Bowen, D. Harris, M. Milne, A. Height, M. Schuler.

ROW 1: B. Signor, S. Romanow, A. Hachigian.

ROW 2: F. Hoffman, M. Smirnovs, C. Perugi, M. Robinson, M. Clark, D. Osgood.

ROW 1: A. Eraybar, S. Mohamed, R. Pate, N. Drake, R. Moreau.

ROW 2: J. Eichhorn, A. Alchalabi, H. Falahee, L. Deimen, E. Mathis, E. Goings.



Modern Dance Club



Natural Science Club



Occupational Therapy Club

ROW 1: G. Schaffer, J. Dodge, J. Baughman, P. Lidgard, D. Shorter, V. Josey, S. Seyferth, L. Lambert.

ROW 2: J. Sinitz, M. Burkin, E. Butler, E. Vinsang, B. McDonald, D. Freeman.

ROW 3: J. Galetti, J. Simmons, B. Mills, Z. Jones, S. Vincent, S. Burris, J. Master-ton, I. Karp, M. Hoffman, J. Dedoes, T. Peliotes, M. Crane.

ROW 4: M. L. Lemmer, L. Dunlap, A. Fromm, P. Pocklington, J. Black, D. Hallfield, J. Whitney, Z. Bailey, L. Cosey, A. Neering.

ROW 1: P. Brossia, L. Curtis, C. Taylor.

ROW 2: M. Popp, B. Crawford, B. Johnson, M. Hutchinson, M. Tarlow, M. Velky, D. Grether, R. Giles, R. Belcher.

ROW 3: M. Curtis, M. Hukill, D. Prichard, M. Bade, M. MacLennan, E. Darago, R. Appleton, G. Alexander, A. Dittmar, R. Schauer, W. Walainis.

The Modern Dance Club is an organization sponsored by the Womens' Recreation Department. The officers are as follows: Dolores Shorter, president; Virginia Josey, vice-president; Sharon Seyferth, secretary-treasurer.

The club is primarily a performing group. They presented a Christmas Concert and a Spring Concert. Aside from these activities they have danced for several community groups.

Some of the members participated in the musical comedy, "Finians Rainbow." Mrs. Jeannine Galetti is the advisor for the group.

The Natural Science Club, under the sponsorship of Mr. David Grether, strives to promote a greater interest in science in both teaching and everyday living. The club carried these goals out through a variety of activities. These activities have included guest speakers, discussions, slides, field trips and a picnic. All the club meetings ended with a happy note—refreshments of coffee and cookies being served.

The officers for this year are: Martin Tarlow, president; Barbara Crawford, vice-president; Marietta Velky, secretary; Janet Dodge, treasurer.

The O. T. Club has had a very active season. The year was opened with a picnic to orient the students to the O. T. club and their functions. At our bi-weekly meetings we have had speakers telling of O. T., crafts, and other fields related to O. T. At Christmas we gave a program for the children at Rackham and for the patients at Ypsilanti State Hospital.

We had a Christmas Craft sale and the profit from this sale enabled us to visit the art department at Cranbrook.

The officers for this year were: Joan LaCrosse, president; Joyce Petzold, vice-president; Marcia Chase, secretary; Nancy Praeter, treasurer; Patt Hobbs, social chairman.

ROW 1: P. Aton, K. Warnemuende, P. Bennett, J. Shaw, S. Johnson, P. Meadows.

ROW 2: G. Hellum, M. Holtom, J. Moore, N. Prater, J. LaCrosse, J. Petzold, D. Rosenbusch, F. Herrick.

ROW 3: M. Bovee, D. Karstetter, J. VanderMeer, L. Larson, C. Blazer, G. Ostby, M. A. Shonk, C. Hallgren, C. Horton, P. Ryder.



Physical Education and Recreation Club



ROW 1: K. Craig, L. Tomassini, B. Bond, J. Chadbourne, L. Parker, M. Burkin, E. Scott, B. Register, J. Wiles, E. Gordon, C. Cindle.
ROW 2: Mr. Hershey, Miss Montgomery, L. Clayton, N. Komenaga, C. Eseman, P. Deno, M. Drake, M. Peters, E. Dennison, Mrs. Borusch.
ROW 3: D. Daly, R. Tonks, C. Crickmore, B. Becker, L. Slepsky, R. Gould, A. E. Antisdell, J. Black, P. Pocklington, S. Davis, S. Kaczorowski.

The Physical Education and Recreation Club is a professional organization for all physical education and recreation majors. The club brings to its members outstanding speakers who are interested in physical education, recreation, and their related subjects. This is done to encourage professional interest among its members.

The governing body of this organization consists of the executive board, president Kay Craig, vice-president Carol Eseman, secretary Marilyn Peters, and treasurer Dick Daly. Assisting the executive board is a general board consisting of two class representatives, two

representatives from the Recreation Department and a reporter. The advisors are Miss Gertrude Montgomery and Mr. Merrill Hershey.

The group sponsors one social and one professional function each year. Our professional function was held in February, when Mr. Frank Manley, director of the Mott Foundation in Flint, talked to the group on the community school project. The social event of the year was held during the first semester when the club sponsored a Hobo Party.

The club welcomes all physical education and recreation majors.

ROW 1: L. Ruggles, S. Goodrich, K. Newlin, B. Jackson, G. Opie, C. Carpenter, E. Nowak, I. Kukla, C. Jays, E. Mayra, N. Pappadakis.
ROW: 2: M. Bradbury, J. Anderson, P. Ernst, M. Janter, B. Morris, J. Van Gilder, K. Max, L. MacDonald, D. McIntyre, D. Coville, M. Clark.
ROW 3: P. Hawarny, G. Coscarelly, C. Cook, M. J. Benson, B. Howell, J. Dulmage, H. Grice, J. Nelson, R. Vanni, D. Alchin, J. Schultz, D. Parks.

Special Education Club



ROW 1: M. Taylor, M. Chamberlain, B. Hummel, E. Bird, N. Homeister, F. Mackes, P. Borgstadt, J. Jordan.

ROW 2: D. Lavoie, M. J. Miller, R. M. Gustafson, B. Love, J. Dwyer, S. Ward, J. Steiner.

ROW 3: S. Trabue, E. Tyrrell, S. Clancy, M. Moran, S. Wagh.

ROW 4: W. Furstenberg, J. Bradley, B. Treado, G. Kaselemis, M. L. Bentley.

The Special Education Club met once a month during the school year in room 203 of Rackham School. Membership is open to majors and minors in special education.

The club planned various activities throughout the year. One major activity was the Christmas party for the children at Rackham School. Throughout the year many members of our club enjoyed films and informal get-togethers. In April, some of the members went to the national convention of the International Council for Exceptional Children which was held in Minneapolis, Minnesota.

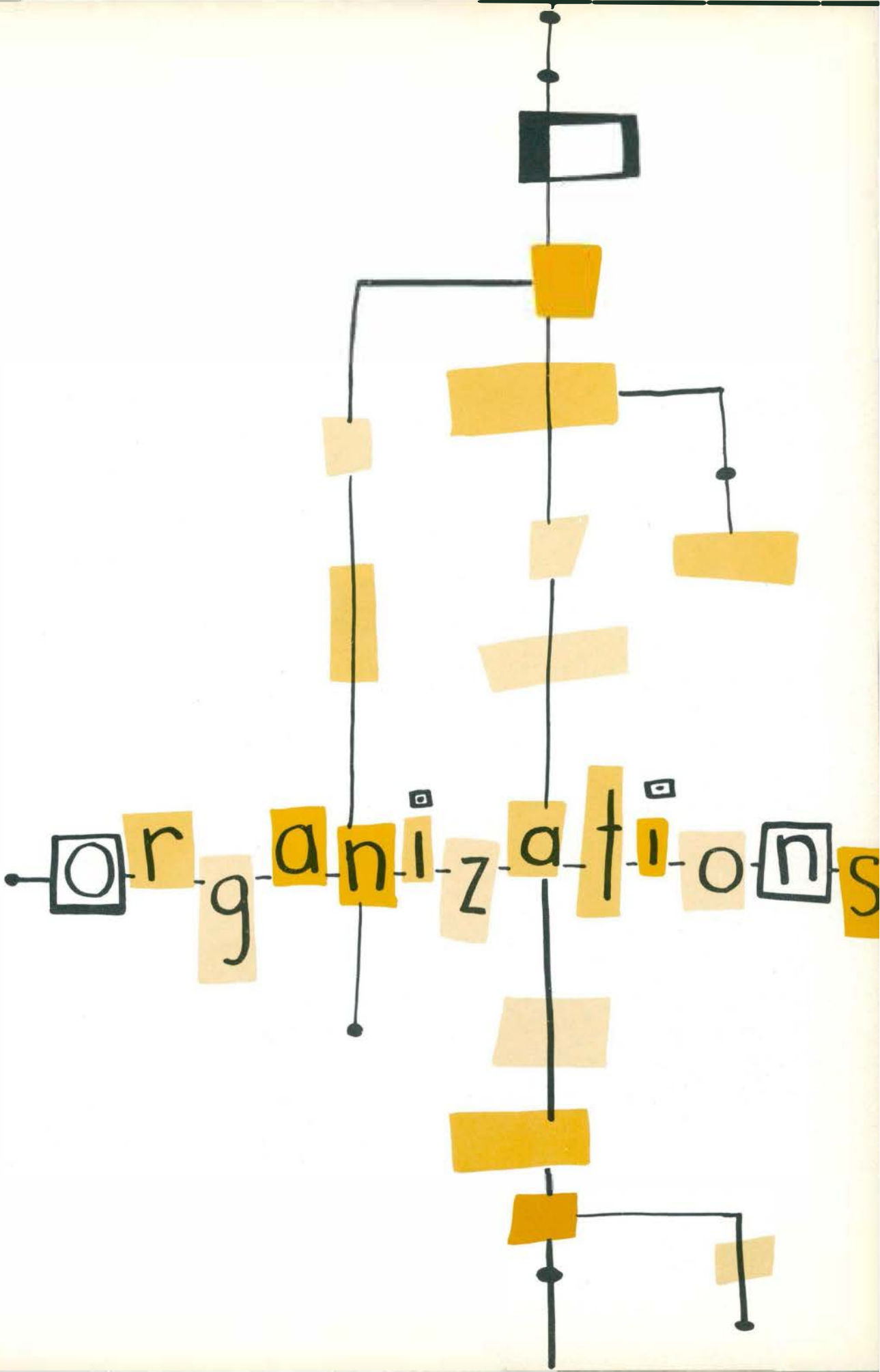
Forensic, the Debate Squad



ROW 1: R. Arlen, W. Mead, R. Bucksar, E. Love, F. Chincuk, R. Robertson.

ROW 2: G. Wessel, Sponsor; T. Alford, W. Furstenberg, G. Smith, M. Obermeyer, K. Mix.

ROW 3: S. Kurowicki, J. Wolter, K. Petersen, P. Wrobel, J. Malin, J. Marcetti, N. Pekuri, L. Toth, N. Drake, D. Benton, M. Kelly, L. Aleks, M. Chamberlain.





ROW 1: K. Thompson, B. Crawford, P. Mann, P. Thompson, Mr. Work, C. Orr, R. Dehnke, D. Pierson, R. Fox, L. Bates.
 ROW 2: G. Webb, C. Rose, D. Peck, N. Hague, R. Reed, K. Townsend, J. Wagle, S. Poling, L. Dunlap, S. Burris, I. R. Stanton, D. Bucksar, R. Mikesell.



The **M.S.N.C. PLAYERS**, the local social dramatic group provides a varied agenda of activities for its members which includes open houses, practical experience in working with the production of plays, group theatre trips, informal get-togeth-

ers, and cast parties. The group also participated in the Homecoming activities in 1955 which was the second consecutive year that "Players" has won first place in the club division of the Homecoming parade. "Players" holds bi-monthly meetings at which any person interested in drama is welcome. "Players" also has just welcomed a new advisory member to its roll. Mr. Bird of the Speech Department.

The officers for the year were Ted Boggs, president; Carolyn Orr, vice-president; Peggy Thompson, secretary; Ron Dehnke, treasurer, Diane Pierson, Historian. The club is sponsored by Mr. Work.

R. O. T. C.

THE OFFICERS

ROW 1: T. McKenny, D. Ferguson, J. Levack, C. Wilbanks, J. Hurbis, D. Dunham.
ROW 2: R. Smoker, A. Donnelly, B. Laubengayer, P. Schneider, R. Bridge, D. Babcock, K. Kraus, J. Birnbaum, C. Purcell.
ROW 3: G. Griffen, J. Greenleaf, R. Wyer, G. Culver.



The Drill Team



Instructor.

The Sweethearts of the Annual Military Ball with their escorts.



A girl's drill team was organized in the fall, and regular practice sessions are held.



Veteran's Association



Women's Recreation Association

ROW 1: T. Santer, J. Hooper, F. Leib,
W. Stiles, C. Pettis, R. Patterson.
ROW 2: J. Walters, D. Johnston, R.
Park, T. Cosgro, R. Arlen.

The Veterans Association has grown out of the old Student Veterans Organization (Vets Club) which was organized right after World War II. At present there are about 700 veterans on campus. Routine affairs of the Veterans Association are carried out by the Veteran's Council which is elected from the membership of the Association each spring.

ROW 1: P. Ernst, M. Janter, C. Ohsowski, J. Dulmage, P. Deno, J. Kosky, E. Dennison, D. Coville, M. Clark, I. Docherty, M. Drake, M. Peters.
ROW 2: V. Josey, J. Van Glider, B. Howell, J. Anderson, M. Verda, S. Kaczorowski, M. Bensen, S. Rando, M. Verhoeven.
ROW 3: P. Spehar, L. Parker, J. Chadbourne, J. Whitman, M. Smith, D. Poet, D. McIntyre, C. Eseman.

The Women's Recreation Association is open to all women students on campus. It sponsors intramural sports and activities for women students as well as co-recreational evenings sponsored once a month. W.R.A. sponsors a fall and spring camp open to all students.

The executive board officers are elected annually. All women students may vote. Any woman with a cumulative "C" average is eligible to serve on the W.R.A. general board which is chosen by the incoming and outgoing executive board members.



Kathy Northrup



Mary Jane Miller



Dolores Karstetter



Jerry Zitny



Doris Terry

Aurora



Jane VanderMeer
Editor



Karen Keller



Miriam Stelzer



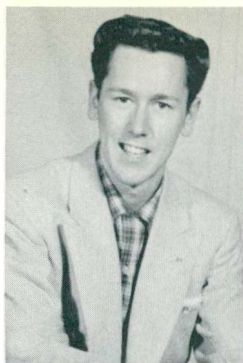
Betsy Lowey



Dick Fulton



Lillian Marley



Roy Pellerin



JoAnne Parks



Florence Ambrose



Fern Swenson

Staff



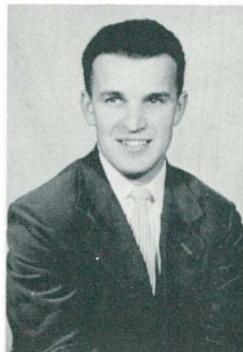
Violet Cushman
Business Manager



Claudette Pitton



Mary Lou Lemmer



Bob Halle



Zanola Bailey



Doreen Picard



Ralph Morrow



Bob Docking

Normal News



Janet Thrush
Editor





Larry Wilson



Jack Walker

Staff



John Hurbis
Business Manager





Richard Judson



Chryssi Mastori

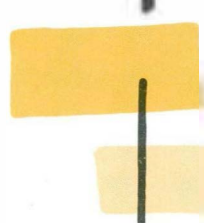
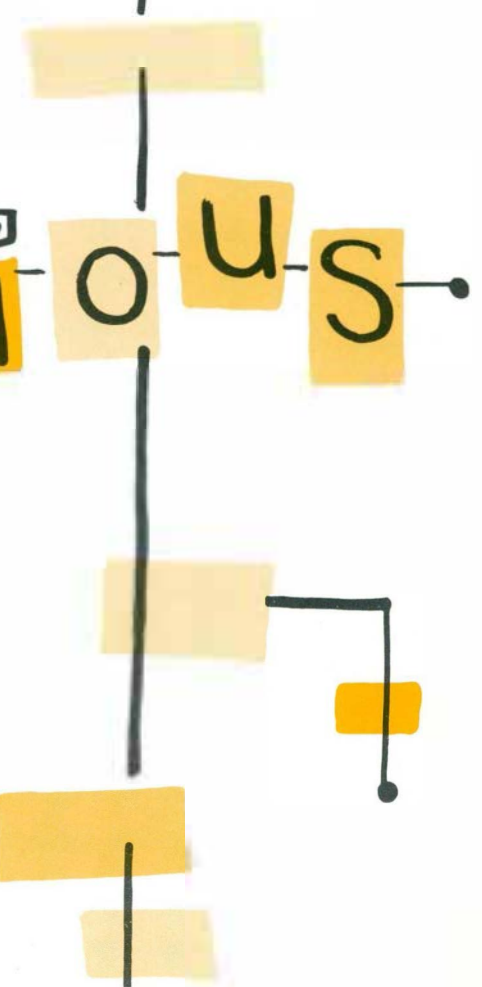
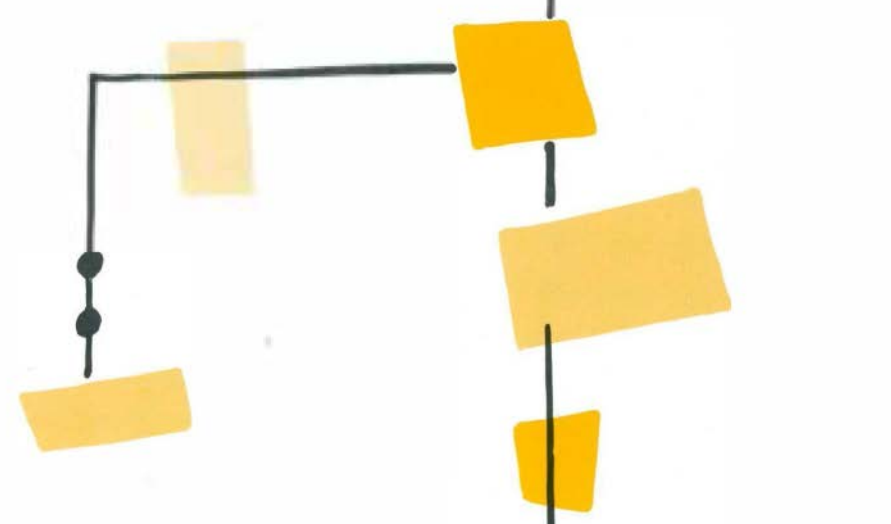
Concepts



Staff



r e l i g i o u s .





Starkweather Hall

The religious organizations on the campus of Michigan State Normal College are many and varied. Besides the denominational groups, the Student Religious Association and the Inter-varsity Christian Fellowship are inter-denominational in organization.

On the dormitory bulletin boards can be found the time of the various organizations' meetings. Also posted there are posters and leaflets publicizing the activities sponsored by the groups throughout the year.

Starkweather hall is the campus home of the student religious organizations. It is here that many of the groups hold their meetings. Here also, is the location of the coffee hour which is popular with the students. The coffee hour, sponsored by the Student Religious Association, welcomes all students every Wednesday afternoon from 3 to 5 o'clock. Movies and selected speakers accompany the afternoon of religion and relaxation.

Religion should be a part of every student's life:

"Take fast hold of instruction; let her not go: keep her; for she is thus life."

Proverbs 4:13.

Canterbury Club



ROW 1: J. Anderson, M. Campbell, A. H. Schoolmaster, M. Moran, G. E. Hamilton, N. Ford.
ROW 2: K. Northrup, B. Lowey, A. Hill, H. Grice, J. Roberts, G. Dzendzel.

Christian Science



ROW 1: D. Benton, J. Wilson, D. Burger, A. Johnson.
ROW 2: D. Payne, R. Fraser, A. Eardley, B. Johnson, D. Arlen.
ROW 3: L. Prichard, D. Kleinsmith, S. Knutson, E. Kleinsmith, R. Moore, D. Dondero.

Christian Youth Fellowship



ROW 1: M. Chamberlain, C. Geelhood, L. Thompson, P. Jackson, J. Sutton, G. Hunger.
ROW 2: E. Boyd, L. Barker, R. Mikesell, B. Jenkins, J. Wadsworth, V. Curtindale, A. Burris.

Inter-Varsity Christian Fellowship



ROW 1: G. Price, B. Watts, C. Schuler, R. Schuler, W. Murphy, R. Mancell, T. Hovermale.
ROW 2: M. Fillmore, M. Chamberlain, G. Holzimmer, M. Nelson, M. Miller, M. MacLennan, E. Innes, M. Montooth, M. Doty.

Lutheran Students Association



ROW 1: P. Brossia, S. Friedly, Rev. H. C. Sipe, B. Grebe, D. Pounds, D. Bolser, M. Bradow.
ROW 2: C. Welle, G. Fischer, A. Brehmer, B. Seils, M. Zick, M. J. Tank, A. Westfall, J. Thompson.

Wesley Foundation



ROW 1: S. Wright, M. Simons, W. Donald, C. Horton, K. Bennett.
ROW 2: H. Kelly, S. Johnson, R. Appleton, T. Trevino, L. Hughes.



ROW 1: S. Brown, S. Pryce, J. Mader, D. Lukaszewski, B. Tresh, C. Cardinal, A. Cantelmo.
ROW 2: G. Davis, T. Duchesneau, K. Furton, G. Cascarelly, M. Diegel, S. Clancy, C. Hallgren, M. L. Ware.
ROW 3: M. Swoish, G. Weber, F. Stott, J. Orlando, Fr. J. L. Krieg, B. Heck, T. Courtright, M. O'Toole, J. Marcetti, J. Gabrys.

Newman Club

Gamma Delta (Mo. Synod.)



ROW 1: L. Novak, N. Imo, S. Horvath, J. Haman, K. Reske, J. Papke.
ROW 2: S. Schomaker, Pastor Scheips, Mrs. Scheips, S. Eichbrecht, V. Cushnack, J. Jasper, C. Watson, A. McBroom.
ROW 3: L. Sewell, P. Wolfe, G. Schelke, L. Kalitta, D. Memhardt, E. Darago, D. Dieter, S. Schwartz, J. Cole, R. Kirchoff.

Student Religious Association

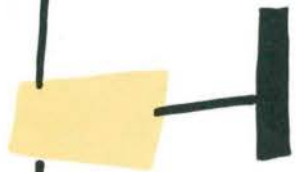


ROW 1: E. Lentz, L. Barker, K. Bennett, B. Watts, M. Moran.
ROW 2: L. Hughes, J. Haman, C. Watson, N. Ford.



h-o-n-o-r-a-r-y.

f-r-a-t-e-r-n-i-t-i-e-s



Honoraries, Professional and Service Fraternities:

Three distinctive organization classifications on campus are the Honor, Professional and Service Fraternities. Kappa Delta Pi, national honor society in education, aims to further develop scholarship, to encourage research and to promote fellowship. Lambda Iota Tau is the national honorary society for students of English and foreign literature. Pi Gamma Nu is a National Social Science honor society. All of these fraternal organizations have a common aim of promoting better scholarship, fellowship and attitudes here on campus.

Pi Kappa Delta encourages public speaking and is open to students proficient in intercollegiate debate, oratory or extemporaneous speaking. The Stoic Society is an honor society for sophomore students who have maintained a "B" average or higher. Its purpose is to encourage high ideals of scholarship and service.

Epsilon Lambda, the local chapter of Mu Phi Epsilon National Music Sorority, is open to women students who show proficiency in music. Delta Xi is the local chapter of Phi Mu Alpha Sinfonia, National Professional Music Fraternity. Open to those men students who excel in music, this organization has as its aim advancement of music.

Pi Omega Pi is a national honorary fraternity for business education students. The American Education Association is devoted to the advancement of education. Phi Omega has as its motto: The service you give is the rent you pay for the space you use in the world today.

KAPPA DELTA PI

KAT



ROW 1: E. Marshal (advisor), M. Shonk (sec'y), C. Kehrer (Pres.) B. Summers (Treas.), C. Williamson.

ROW 2: B. Schoenals, C. Agre, J. Chiravola, P. Meadows, B. Signor.

LAMBDA IOTA TAU

ΛIT



ROW 1: E. White, L. Kalitta, J. Chiravola.
ROW 2: C. Conklin, B. Signor, J. Jubenville, B. Madson, D. Rollins (Advisor).

PI KAPPA DELTA

ΠΚΔ



ROW 1: W. Meade, E. Love, R. Arlen, R. Robertson, G. Wessel (Advisor), T. Alford.
ROW 2: S. Weber, J. Wolter, D. Benton, N. Drake, J. Malin.

S T O I C S



ROW 1: P. Zabara, P. Meadows, S. Friedley, T. Gormley, M. Robinson (advisor), C. Blazer, C. Mastori, F. Shimada, D. Bebeau.
 ROW 2: W. Stiles, E. Breyfogle, M. Young, C. Agre, C. Conklin, A. Hosie, M. Miechiels, J. Petzold, D. Hidenfeller, M. Popp, J. Arnos, S. Gleiser, J. Forc.



AMERICAN CHILDHOOD EDUCATION

ROW 1 (left to right): J. Boye, N. Gamble, A. Hasler, S. Weber, H. Rice, V. Hutton, B. Drom, B. Lcre.
 ROW 2: M. Odum, L. Cosey, P. Menoutes, M. Shoop (Vice Pres.), R. Halle (Treas.), A. Jaccbs (Pres.), T. Monahan (Co-Advisor), V. Deneski (Sec'y), B. Simon, J. Volcheck, M. Kreft
 ROW 3: M. Kolander, E. Odell, G. Fischer, M. Miller, B. Menefee, J. Fickell, J. Lord, J. Mayberry, K. Krokker, V. Cushnack, S. Snell, L. Wright.

MU PHI EPSILON

MΦE



ROW 1: N. Emerick, B. Magary, L. Janicki (Pres.), J. Kavie, G. Grissel.
ROW 2: M. Constas, N. Tompkins, R. Elder, M. Gould, M. Ausum, M. Greenfield.

PHI MU ALPHA SINFONIA

ΦΜΑ

Sinfonia



ROW 1: A. Blunt, M. Riley (Advisor), T. Smith, B. Zander, C. Dittmar, R. Blank.
ROW 2: L. Farcus, D. Hanson, P. Baldrige, G. Marriott, P. Jackson.
MISSING: J. Purcell, S. King, E. Starnal, E. Stratelak, C. Ewell.

PI OMEGA PI

ΠΛΠ



ROW 1: T. Atkinson, D. Payne, N. Tucker (Pres.), N. Anderson, Advisor, J. Sciarini.
ROW 2: R. Peake, J. McMath, J. Schlacter, B. Robinson, D. Simon.

PHI OMEGA



ROW 1: A. Burris, T. Butts, H. K. Soo, D. Kleinsmith.
ROW 2: L. Profit (Advisor), E. Kleinsmith, R. Wetherell, W. Mead, D. Ferguson, R. Arlen, N. Freund (Advisor)
ROW 3: J. Bozoyan, P. Niehaus, R. Fullerton, L. Wilson, M. Bloomer, W. Fitzpatrick, R. Bucksar, G. Kassabian, R. Morrow.

Φ Ω Π

Social
fraternities



FCW 1: F. Davidson, J. Davis, Dean Hill, M. Shonk, M. Davidson, S. Ramsey, J. Pike, D. Hollifield.
 FCW 2: B. Bates, B. Waters, J. Wittig, S. Friedly, A. Arlan, B. Kiessel, M. Duyck, J. Higgins, J. Jelenczy, N. Porter.

PANHELLENIC





The Panhellenic Association is composed of two representatives from each of the nine member sororities at Michigan State Normal College. The purposes of this Association are in keeping with those of the National Panhellenic Conference and governed by the policies established by the Student Activities Committee of Michigan State Normal College. These purposes are five-fold: to maintain on a high plane fraternity life and interfraternity relationships; to further intellectual accomplishment and scholarship; to maintain high social standards; to discuss questions of interest in the college and the fraternity world; to compile rules governing rushing, pledging, and initiation. Dean Hill is advisor to the Panhellenic Association.

This year Panhellenic has fully lived up to its purposes. The Association has worked hard and faithfully on a more effective rushing system and finally developed one just in time for spring rush. Panhellenic also supported an annual workshop, a Panhellenic sing and the presentation of the Panhellenic Scholarship to the sorority with the highest academic standing.

The Xi chapter of



ROW 1: D. Sharter, L. Driskell, W. Brazil, Y. Cosey.
ROW 2: A. Height, A. Bryant, B. Wright, I. Stephens, Mrs. Francoise, J. Davis.
ROW 3: L. Cosey, V. Stephenson, C. Cocroft, N. Porter, C. Collier, A. Sparks, V. Josey.

***** ALPHA KAPPA ALPHA

Date Founded: 1908
Local Date Founded: 1949
Flower: Tea Rose
Colors: Salmon Pink and Apple Green



Prize-winning float



On planet AKA XL
"Rush Party"

AKA

The Alpha chapter of



ROW 1: P. Ainsley, N. Inklovitch, J. Haman, B. Toonder.
 ROW 2: E. Kimura, H. Lymperis, Y. Fisher, I. Williamson, D. Renwick, Mrs. Bates, T. Gormley, G. Johnson, B. Bates, B. McDonald.
 ROW 3: J. Jubenville, P. Wolfe, L. Marley, S. Davis, A. Hughes, K. Northrup, C. Fantow, J. Griffiths, J. Chirvola, M. Tamblyn.



Some Fun!



A social hour



ALPHA SIGMA TAU

Date Founded: 1899
 Local Date Founded: 1899
 Flower: Yellow Rose
 Colors: Emerald Green and Gold

AΣΤ

"Aloha"

The Gamma Zeta chapter of



ROW 1: S. Pepper, L. Gainsley, B. Martin, J. Bates, J. Kidle, A. Murphy, J. Wagner.
 ROW 2: A. Hasler, M. Sherfey, R. Alcini, M. Fisher, B. Summers, Mrs. Addison, I. Olah, I. Trinkle, M. Gambill, D. Osgood, C. Conklin, J. Jordan, M. Stephen.
 ROW 3: D. Garbrecht, M. O'Toole, J. Wittig, A. Nelson, M. Liston, C. Kisella, P. Borgstadt, J. Petzold, J. Kirschke, B. Stamos, M. Schickler, N. Prater, S. Ramsey, E. Andre.

ALPHA XI DELTA

Date Founded: 1893
 Local Chapter Founded: 1954
 Flower: Pink Killarney Rose
 Colors: Double Blue and Yellow



By the sea, by the sea, by the beautiful sea . . .

The Eta chapter of



ROW 1: J. Wilson, C. Briggs, J. Eshenburg, C. Hill, M. Taylor, C. Hamilton, P. Mann, P. Barwinski, M. Verhoeven, D. Peterson.
 ROW 2: S. Davis, M. Lemmer, J. Schlachter, M. Searles, G. Ostby, M. Hunt, S. Clancy, J. Stack.
 ROW 3: M. Munro, M. Shonk, M. Fuller, J. Jasper, M. Stelzer, B. Poole, D. Ausum, J. Bates, B. Waters, C. Orr, E. Brown, G. Mrstik.

DELTA SIGMA EPSILON

Date Founded: 1914
 Local Date Founded: 1921
 Flower: Tea Rose
 Colors: Olive Green and Cream



"Congratulations Jackie"



Homecoming float



The Stork Club
 This was entertainment?



The Delta Beta chapter of



ROW 1: Miss Anderson V. Kelly, T. Hancock, Z. Bailey, M. Davidson, E. Butler, D. Hollifield.
ROW 2: P. Winbish, S. Rosebrough, M. Chattman, C. Asper, A. Frazier, D. Baird.

DELTA SIGMA THETA

Date Founded: 1913
Local Date Founded: 1949
Flower: Violet
Colors: Crimson and Cream



One of the annual teas when
Deltas get together.



Entry in the Homecoming festivities

The Gamma Sigma chapter of



ROW 1: C. Thomas, E. Savage, J. Gratoski, B. Rydholm, G. Maher, R. Chowen, M. Cashman.
 ROW 2: V. Leverton, M. Janter, B. Kiessel, J. Ford, Mrs. Kelley, P. Hobbs, J. McKibbon, C. Shepherd, J. VanderMeer.
 ROW 3: L. Thackham, P. Kennedy, T. Cousens, D. Rosenbusch, D. Picard, C. Puls, M. Hadley, B. Binns, P. Seavey, R. King, V. Cushnack, M. Duyck, B. Morris.



"Dream Man"



"Queen"



"Delta Dance"

DELTA ZETA

Date Founded: 1902
 Local Chapter Founded: 1955
 Flower: Pink Killarney Rose
 Colors: Old Rose and Vieux Green



The Alpha chapter of



ROW 1: Mrs. Anderson, S. Friedly, V. Murphy, B. Signor, M. Scrivens, M. Williams, Mrs. Wilson.
ROW 2: A. Close, P. Oxender, B. Vandercar, H. Higgins, P. Pierce, M. Mannise, L. Kalitta.

ΠΚΣ

PI KAPPA SIGMA



Beth receives the Georgia Fox Brown Scholarship

Date Founded: 1894
Local Date Founded: 1894
Flower: Forget-Me-Not and Jonquil
Colors: Turquoise Blue and Gold



Part of the Gang has a conference



Pledges at work

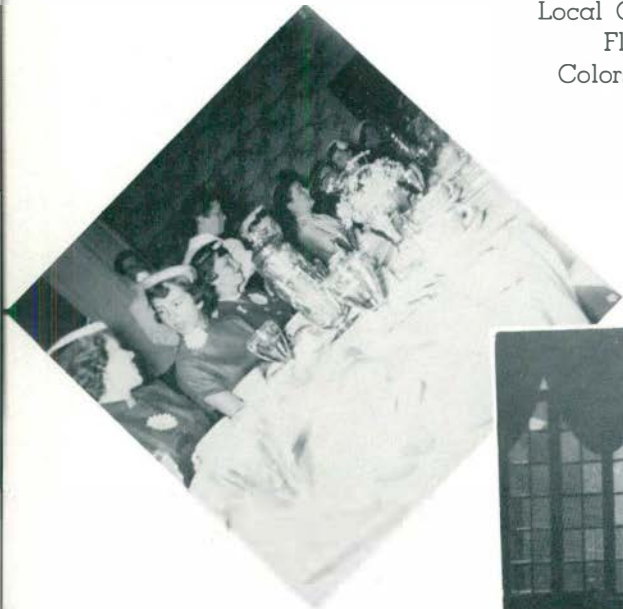
The Alpha chapter of



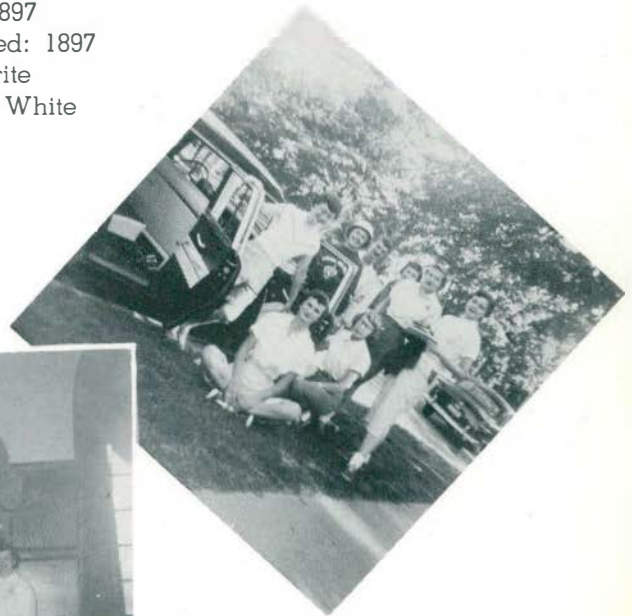
ROW 1: M. Masters, A. Sokarda, R. Reed, K. Pastor, P. Broderick, P. Swidan, G. Potts, J. Dwyer, L. Ackerman, H. Mouganis, C. Sauter, M. Hathaway.
 ROW 2: C. Wolfe, K. Babcock, Mrs. Grimm, L. Janicki, B. Bell, S. Thomas, J. LaCrosse, R. Batalucco, Mrs. Langman, S. Watson, J. Hood, M. Miechiels.
 ROW 3: F. Kokinakes, F. Davidson, M. Chase, A. Rice, M. White, L. McKay, D. Memhardt, D. Haynes, A. Hosie, H. Thompson, J. Whitney, B. Butler, M. Slosson, E. Tyrrell, H. Wingent, I. Stanton, A. Arlen, A. Hadr.

SIGMA NU PHI

Date Founded: 1897
 Local Chapter Founded: 1897
 Flower: Marguerite
 Colors: Yellow and White



In style at Dearborn Inn



Off for a weekend of fun! fun! fun!



A kitty for a Carousel

ΣΝΦ

The Omicron chapter of



ROW 1: M. Cheatle, B. Megahan, M. Smith, J. Hurt, J. Fenzel, S. Stinson, M. Marco, J. Sanderson, S. Symington.
 ROW 2: Mrs. Speckhard, G. Zimmermann, B. Sagamang, M. Walker, J. Jelascity, P. Lidgard, D. Nisbet, N. Pinkerton, J. Tragge, L. Cheek, R. Schynecki, M. Larsen, J. Pike.
 ROW 3: L. Taffoli, H. Millar, L. Parker, B. Logie, A. Dawson, R. Zumstein, D. Temple, B. Foley, B. Curtis, S. Poling, G. Schlabit, C. Cooper M. Dreher.

. SIGMA SIGMA SIGMA

Date Founded: 1898
 Local Chapter Founded: 1917
 Flower: Violet
 Colors: Purple and White

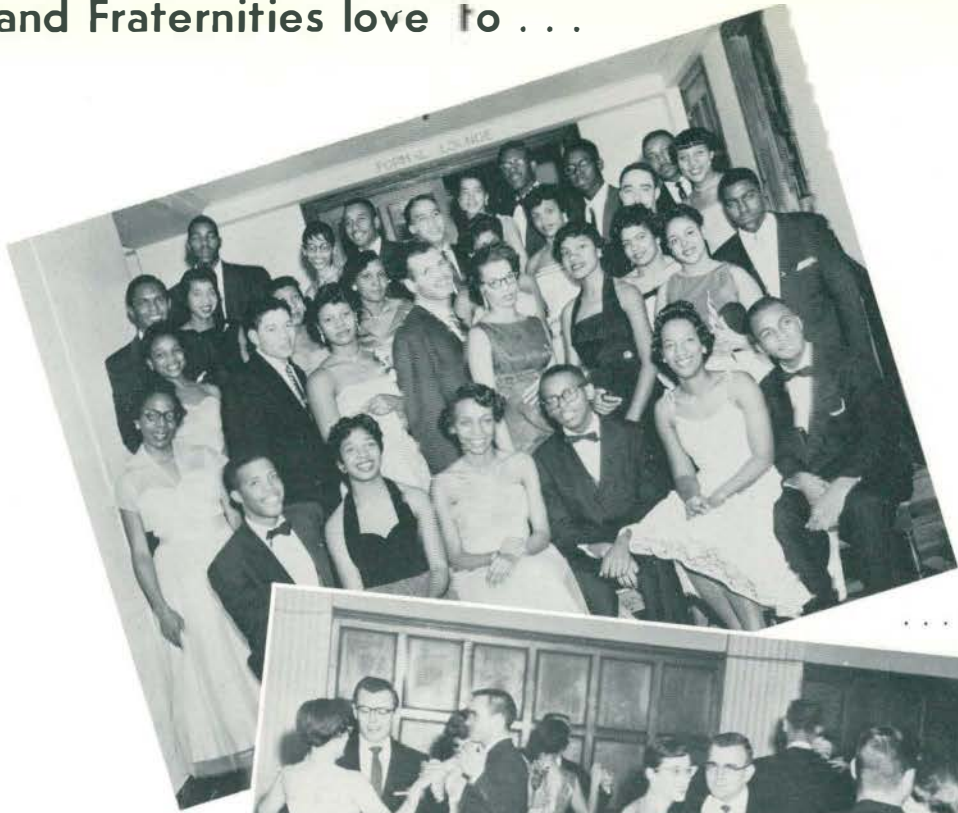


Six dwarfs of "Sigma Land"



Sigma Smoker

Sororities and Fraternities love to . . .



. . . dance . . .



. . . and dance . . .



. . . and dance.



ROW 1: L. Brisholm, J. Gural, J. Kitson, D. Babcock, D. Larsen, M. Borden, I. Watson.
ROW 2: R. Patterson, R. Tonks, H. Hasenclever, D. Burrell, R. Weymouth, C. Taylor, T. Alford.

Interfraternity Council

The Interfraternity Council is composed of two men from each recognized fraternity. The purpose of this council is to develop a closer relationship and a better understanding among the fraternities and to promote activities that will aim toward this goal. It is the Interfraternity Council that legislates the pledging rules and directs the pledge activities of the fraternities.

The Independent chapter of



ROW 1: B. O'Brien, T. Atkinson, W. Tyus, L. Wilson, A. Burris, B. Schauer.
 ROW 2: D. Rinckney, W. Work, R. Morrow, P. Niehaus, C. Taylor, W. Moore, T. Boggs.
 ROW 3: B. Fitzpatrick, P. Risdon, E. Pioch, W. Mead, D. Boye, D. Arlen, E. Rafferty, D. Wiseman, F. Rafferty, J. Walker.

.TAU SIGMA CHI

TEX

Date Founded: 1948
 Local Date Founded: 1949
 Flower: Red carnation
 Colors: Gold, black and scarlet



The annual Presentation of the Tau Sigma Chi Queen's Trophy



Tar Southern



Music,
 Music,
 Music.

The Independent chapter of



ROW 1: V. Eastedirg, J. Conachen, G. Bernbaum, E. Hemingway, J. Gural, R. Wolford.
 ROW 2: H. Walters, A. Fogle, J. Stewart, L. Niendorf, B. Menefee, J. McGill, T. Hixson, R. Sumner.
 ROW 3: L. Briskorn, D. Adler, J. Kropfeld, D. Mead, R. Jackson, J. Collins, W. Hunter, T. Rutila, D. Wood, D. Roe.
 ROW 4: S. Satile, J. Becker, R. Gray, T. Smith, R. Miron, N. Basile, M. Piccinni, A. Schober, R. Robb, J. Powers, R. Fulton, L. Kinsey, D. Russell.

ZETA CHI SIGMA

Date Founded: 1928
 Local Chapter Founded: 1928
 Flower: Yellow Narcissus
 Colors: Maroon and Gold

ZXΣ



Halloween Party



Christmas Party



Fraternities have their formal affairs . . .



. . . their fun . . .



. . . and their formal functions.

The Iota chapter of



ROW 1: D. O'Connell, D. Simonds, S. Barkus, D. Dawkins, H. Hasenclever, R. Lawson, B. Treado.
 ROW 2: D. Navarra, J. Breaugh, E. Watkins, Dr. Virtue, S. Kubicki, G. Evans, Dr. Loz, D. Grinenko.
 ROW 3: B. Gouin, J. Harris, P. Lowney, R. Saam, J. Firestone, N. Konezal, J. Bozymowski, T. Wilson,
 P. Feamster, R. Kennedy, T. Cosgro.

***** ALPHA GAMMA UPSILON

Date founded: 1922
 Local date founded: 1948
 Flower: Pink Tea Rose
 Colors: Black and Old Gold



Pledge Class



An Alph Gam warrior



Homecoming customs

AGU

The Independent chapter of



ROW 1: A. Pacioni, R. Nalleandian, H. Price, J. Steen, L. Peruski.
 ROW 2: H. Harding, G. Ramsey, R. Learmont, H. Hershey, C. Kaselemis, J. Mank, T. Geboski,
 M. Borden, L. Fertell.
 ROW 3: E. Pacioni, B. Earle, J. Hardin, B. Stanley, J. Schlichting, W. Lewelling, J. Close, D.
 Tarbutton, C. Christie, J. Velis.

ARM OF HONOR

Date Founded: 1895
 Local Date Founded: 1895
 Flower: Red Carnation
 Colors: Red and Black



"The Ball of Honor"

A OF H



The Arm's contribution to the Homecoming Parade

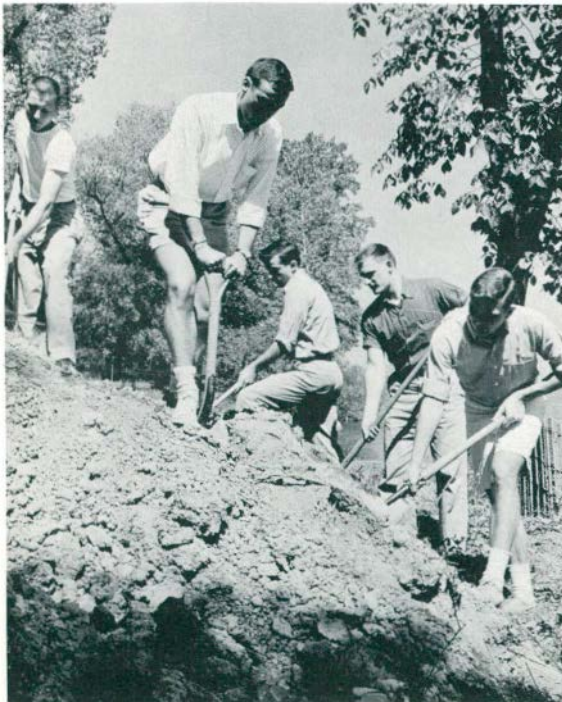
The Gamma Tau chapter of * * * *



ROW 1: J. Cox, D. Nicholas, K. Jenings, J. Eichhorn, L. Marco, R. Henry, B. Medley, D. Larsen, T. Santer.
 ROW 2: G. Papp, F. Cernant, E. Sala, K. Kraus, J. Lepak, L. Boswick, B. Robertson, J. Spangler.
 ROW 3: M. Furay, B. Turner, T. Hancock, K. Fenton, B. Linkletter, B. Gould, B. McCullough, J. Moore, E. Sala, B. Stinger, D. Turner.

* * * * DELTA SIGMA PHI

Date Founded: 1899
 International Fraternity
 Local Date Founded: 1952
 Flower: White Carnation
 Colors: Nile Green and White



The Del Sigs cleaning up Free Press Fresh Air Camp



Annual Sailor's Ball



The Delta Nu chapter of



ROW 1: J. Chennault, A. Blount, R. Holifield, W. Green, L. Clark.
 ROW 2: B. Bryant, J. Thomas, R. Williams, R. Patterson, R. Robertson.

..... KAPPA ALPHA PSI

Date founded: 1911
 Local date founded: 1955
 Flower: Red Carnation
 Colors: Crimson and Cream

KΑΨ



Congratulations!



They sing for Kappa Alpha Psi



Some Fun

The Alpha chapter of



ROW 1: D. Tucker, E. Berkich, R. Ostermyer, D. French, J. Murdock, J. Schandavel, E. Dean, J. Lamb, F. Stutcher, D. Kleinsmith, K. Kelley, N. Madias.
 ROW 2: B. Smoker, T. Metzdorf, D. Dunham, Mr. Brownrigg—Patron, K. Seng, B. Graham, R. Tonks, D. Root, R. Pecke.
 ROW 3: J. Frauenheim, R. Keller, R. Lingle, B. Jamieson, J. Honchell, F. Stilwell, H. Minor, D. Alchin, H. Goodhue, J. Tecmire, E. Lynch, L. Bloch.

. KAPPA PHI ALPHA



Pride and Joy

Date Founded: 1902
 Local Chapter Founded: 1902
 Flower: American Beauty Rose
 Colors: Royal Purple and Gold



A handsome brother at Open House



The Gang

ΚΦΑ

The Theta Gamme chapter of



ROW 1: C. Dixon, T. Alford, C. Washington.
 ROW 2: W. Brown, V. Windom, D. Hobson, H. Carroll.

..... OMEGA PSI PHI

Date Founded: 1914
 Local Date Founded: 1952
 Color: Purple and Gold



Omega's contribution



Alumni

The Lambda chapter of



ROW 1: T. Turnbull, D. Fitzgibbon, R. Hart, T. Schomaker, J. Schmauch, J. Rowe, E. Bailer.
 ROW 2: G. Albright, D. Park, F. Piccinni, A. Oakes, J. Hurbis, Mr. W. Wilcox—Advisor, Mr. H. Falahee—Advisor, G. Davis, L. Holley.
 ROW 3: B. Keller, G. Gokey, D. Wilkins, R. Bales, R. Vanni, R. Bohn, W. Strohl, W. McLarty, D. Andrews, G. Zitny, C. Irwin.

PHI SIGMA EPSILON

Date Founded: 1910
 Local Date Founded: 1934
 Flower: White Tea Rose
 Colors: Cardinal Red and Gray



Opening the meeting

ΦΣΕ



Party



Antics in front of the "Old Phi Sig House"

The Alpha Theta chapter of . * * *



ROW 1: L. Johnson, B. Docking, B. Weymouth, C. Kitzpatrick, L. Deibel, E. Kleinsmith, N. Soboleski, P. Jablonski, J. Smith.
 ROW 2: J. Kitson, K. Santer, B. Halle, J. Rose, L. Rafein, B. Appleton, B. Austin, J. Walker, K. Bennett, V. Cook, C. Rufies.
 ROW 3: C. Wiseman E. Dreiman, R. Diaz, D. Sample, P. Hawarny, B. Eppler, A. McKibbon.
 ROW 4: B. Rose, B. Lakin, D. Pray, M. Brado, J. Wolfe, T. Shara, Mr. Goings, M. Lichenstein, G. Yates, B. Henry, P. Kruger, J. Coscarelly, B. Babcock, D. Elgie.

* * * SIGMA TAU GAMMA

Date Founded: 1920
 Local Date Founded: 1948
 Flower: White Rose
 Colors: Blue and White



Picnic! Picnic! Picnic!



ΣΤΓ

The Delta Phi chapter of



ROW 1: J. Holden, R. Hicks, D. Burrell, D. Smith, R. Mackey, G. Buck.
 ROW 2: N. Pappadakis, B. Koss, R. Staley, P. Shulstad, J. Pickell, C. Purcell, R. Bridge, W. Spencer,
 R. Hagopian, J. Thompson, K. Keating, R. Daley, D. Sloan.
 ROW 3: R. Becker, J. Brown, M. Groves, P. Spitale, D. Wendling, J. Allen, D. Parks, P. Straub, R.
 Egner, R. Wyer, C. Williams, R. Sanders.



Father and Son Day Picnic

. . . . TAU KAPPA EPSILON

Date Founded: 1899
 Local Date Founded: 1955
 Flower: Red Carnation
 Colors: Cherry and Grey

TKE



Annual Banquet



The Big Basketball Team





ROW 1: D. Vidosh, C. James, B. Mirer, C. Scrafano, J. Miller, B. Basel, D. Wahl, D. Wilkins, L. Mawby, H. Carroll, B. Dank.
 ROW 2: D. Matthews, J. Perona, C. Dixon, D. Daly, G. Thompson, J. Wedge, G. Brown, D. Nicholas, V. Windom, K. Keating, E. Comfort, L. Wigner.
 ROW 3: Coach Trosko, D. Parks, L. Stoelton, D. Maer, J. Christensen, D. Tutich, B. McCullough, J. Haywood, C. Elliott, J. Allen, D. Wintrode, Coach Yanoschik.

Football

The Huron eleven finished the 1955 season with a 7 win—2 loss mark, to reign as co-champions of the IIAC with Central Michigan and Southern Illinois.

Early in the season after posting a strong 25-6 win over Hope, the Hurons were handed their first defeat by a powerful Hillsdale squad by score of 20 to 6. The Hurons wasted no time getting back on the victory trail with wins over Baldwin 25-0, Western Illinois 6-2 and Illinois State 25-6.

Homecoming this year was a complete success with the Normal eleven handing Southern a 7-2 defeat. Halfback Virgil Windom scored the Huron's only tally of the game.

The 14-6 win the next week over Eastern Illinois was attributed to the defensive playing of guard Dick Marr who twice grabbed blocked kicks and carried them over for touchdowns.

Our traditional battle this year with Central Michigan over the Totem Pole was lost by a score of 20-27, with Windom, McCormick and Keating scoring. This being their second loss, the Huron's came back hard in the last game of the season to beat Northern Illinois by a score of 13-6, to win a share of the IIAC crown.

Doug Wilkins off on a long gain against Illinois Normal.



Virgil Windom leads the way as Jerry Miller breaks through the Central line for a short gain.



Kerry Keating 46 getting upended by an unidentified Hope player as Tom McCormick 22 leads play.

Virgil Windom falls in end zone for his third touchdown of game against Normal Illinois.





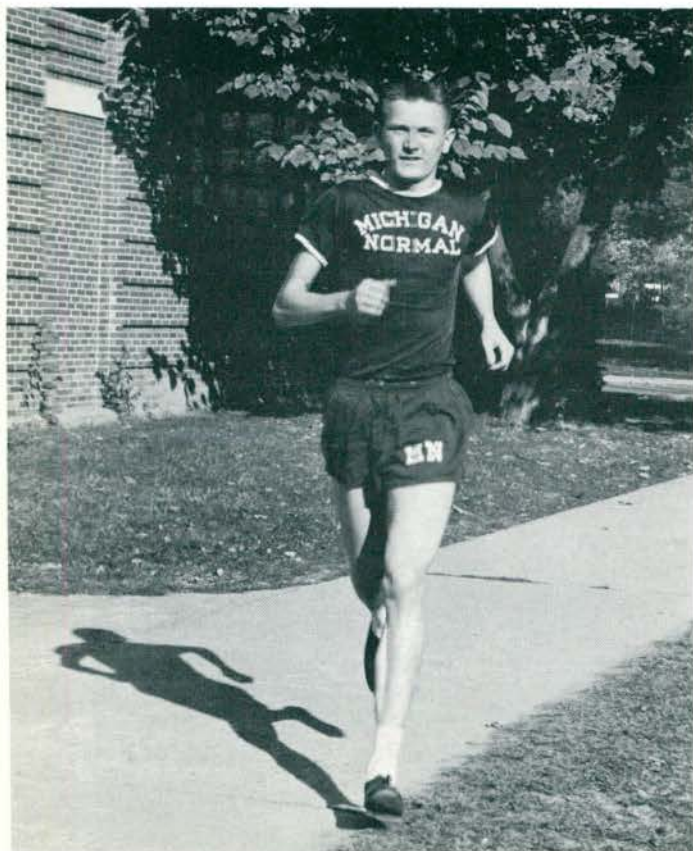
Line Coach Phil Yamoschik, Head Coach Fred Trosko, Captain Barry Basel, Backfield Coach Jim Scala.

Normal Halfback Doug Wilkins stopped on the one yard line by the center of the Central Michigan line.





ROW 1: B. Patrick, J. Buck, D. Pounds, D. Schultz, Captain J. Zitny, K. Santer, B. Scheffler, R. Santer, G. Davis
 ROW 2: F. Roberts, J. Nedean, H. Reindel, B. Stenger, G. Beach, B. Gould, Coach George Marshall.



Captain Jerry Zitny

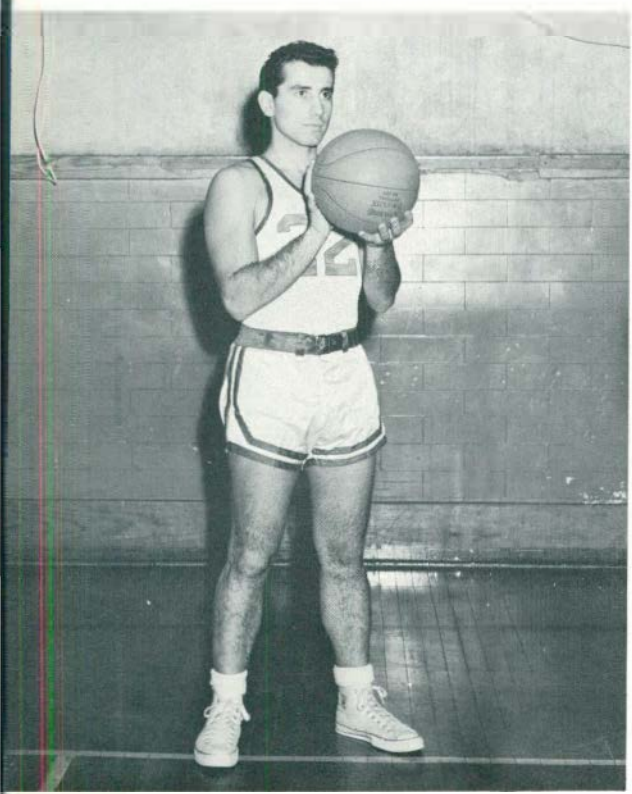
Cross Country

The 1955 Huron Cross Country team went again on their winning ways by winning the conference title for the sixth consecutive year. The Harriers, coached by George Marshall finished the season with a 2-1 record. They defeated Bowling Green University and Central Michigan before losing to a powerful Miami U. seven.

Led by Captain Jerry Zitny, junior, the Hurons will have their complete team returning next year. Ken Santer, Dave Schultz, Bob Sheffler, Don Pounds, Bob Patrick, Roy Pellerin, Howard Reindel, and Jerry Buck are all expected to carry the green and white colors next year.



LEFT TO RIGHT: Cpt. N. Pappadakis, B. Becker, C. Crickmore, J. Czanko, P. Spitale, D. Parks, E. Greener, F. Ireland, D. Mack, J. Stevens, F. Manley, J. McIntyre.
Coach Skala in front.



Captain Nick Pappadakis.

Basketball

The Normal basketball team had a disappointing season this year. They finished the season with a 4-14 record and ended up last in the I.L.A.C., winning only one conference game. Lack of experienced players and "tall men" proved to be the Huron's downfall this year.

The outstanding players were: Dave Parks, Nick Pappadakis, and John McIntyre. The Huron team was made up primarily of freshmen with Jim Stevens, Chuck Crickmore, and Don Mack doing a fine job. Coach Jim Skala can look forward to next year as he is losing only two men by graduation.

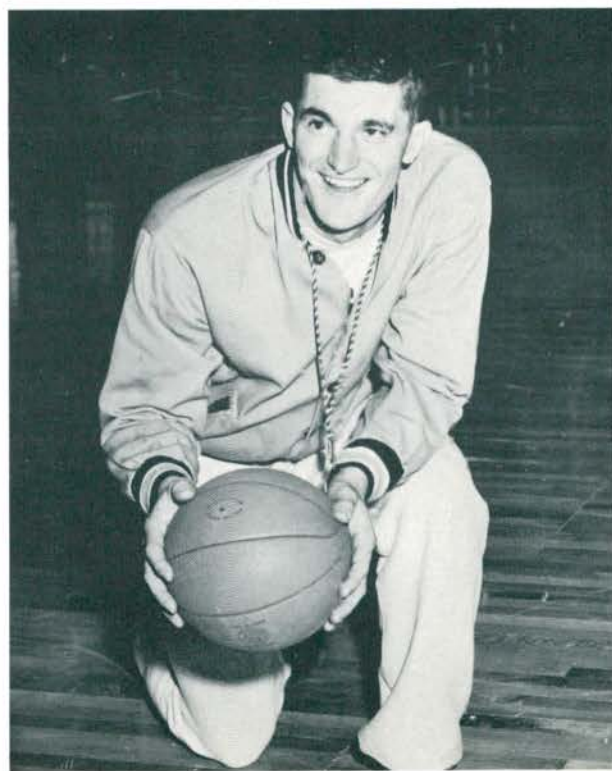


Coach C. Page, J. Schultz, D. Mathews, R. Williams, D. Vidosh, D. Stellers, G. Paliaro, J. Walsh.

Reserve Team



Coach Jim Scala



Reserve Coach Charles Faige.



Top --- up -- and in!

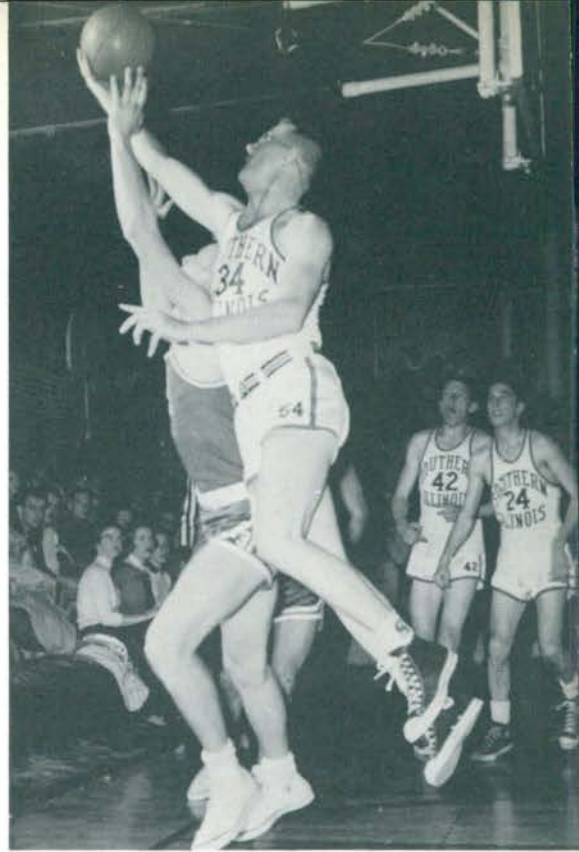
Dave Parks drives in for two points as M.S.MC defeats Hope College.

Jim Stevens fights for the ball as Dave Parks 31 and Nick Pappiakis 22 look on.



Get that ball!

Two Southern Illinois players look on as Dave Parks (31) fights for the ball.



The big stretch.

Normal's Jim Czanko (27) and Fred Marberry (6) leap for a rebound in Normal's loss to Illinois State University.

Watch out!

Normal's Jim Stevens (23) surrounded by Northern Illinois players.





ROW 1: D. Wilkins, G. Crowell, J. Lamb, D. Root, D. Parks, G. Davis, D. Daly, J. Buck, J. Miller, L. Holley.
 ROW 2: T. McCormick, D. Marr, G. Thompson, D. Schultz, J. Wedge, H. Price, J. Schandevél, L. Mawby, D. Alchin, R. Taylor, D. Tutich.
 ROW 3: Major Perry, Sponsor; J. Grotewohl, J. Zitny, J. Haywood, B. McCullough, K. Keating, K. Santer, J. Czanko, J. Allen, R. Lawson, J. Frauenheim.

The Varsity Club

The Cheerleaders



ROW 1: L. Cheek, M. J. Cashman, P. Ernst, T. Pelotes, J. Dedoes, S. Brown.
 ROW 2: B. Toth, L. Dunlap, R. Rollet, B. Hollifield, D. Wetherell, B. Traum, S. Cooper.



ROW 1: J. Buck, J. Birnbaum, D. Sloan, J. Amhad, D. Alchin, D. Root, L. Simpson, R. Pellerin, R. Douglas, D. Schultz, B. Stevens, G. Marshall, Coach.
 ROW 2: A. Day, R. Campbell, B. Patrick, R. Thorneberry, R. Santer, D. Gay, J. Robinson, Unidentified, C. Wright, K. Santer, C. Kreiger, B. Stenger.
 ROW 3: P. Yanoshik, Asst. Coach; G. Bergman, P. Sobol, H. Reindel, M. Tabris, R. Douglas, G. Beach, P. Patterson, J. Allen, J. Graff.



Captain Duane Root

Track

The 1956 M.S.N.C. track team led by star captain Duane Root met formidable opponents this year. Indiana, Michigan, and Michigan State were just a few of the powerhouses which visited Bowen Field House.

Under the direction of George Marshall and his able assistant, Phil Yanoshik, the team was built around a nucleus of eight lettermen: sprinters Don Alchin and Dean Sloan, hurdlers Duane Root and Jerry Birnbaum, weightman Jim Allen, distancemen Jerry Zitny, Ken Santer, and Dave Schultz.

Among the newcomers wearing the green and white are: Roy Pellerin, Levi Simpson, Bob Douglas, Bob Patrick, James Robinson, and Carl Krieger to name a few. These freshmen helped to fill in the vacancies left by last year's graduating seniors.

Since being in the I.I.A.C., the Hurons have compiled an enviable record. They have won the conference five years in a row and finished a close second last year. This year they are co-favorites along with Central Michigan to capture the conference crown.



They're off!

Normal's Jerry Zitny, Roy Pellerin, and Jerry Buck take off on the mile run with Indiana. Zitny finished first with Rcy Pellerin third.

He's over.

Jim Robinson, freshman pole vaulter, clears 13 feet for the third time in three meets.





Normal's crack mile relay team.

LEFT TO RIGHT: Don Alchin, Kerry Keating Carl Krieger and Levi Simpson.

Just big "Moose" Allen
throwing his weight
around for a new school
record of 51 feet and 4
inches.



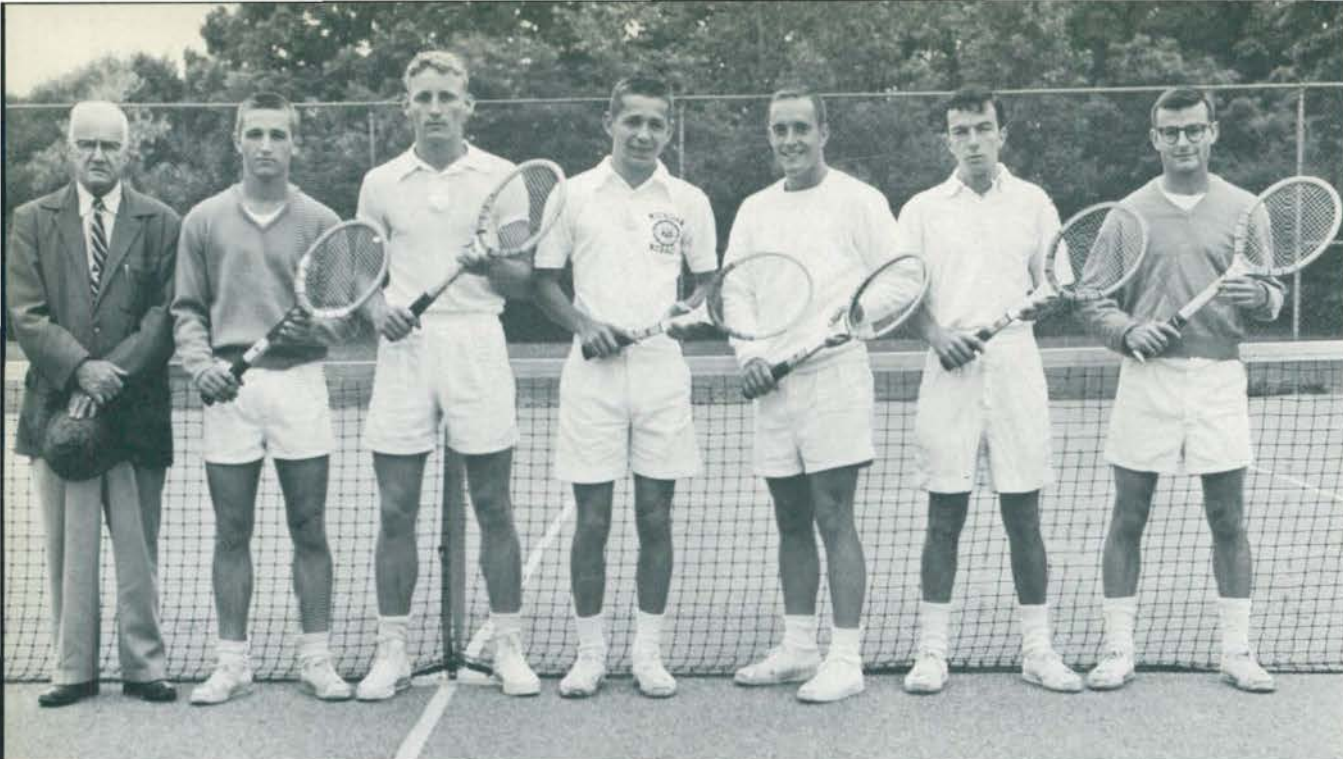


Normal's two mile relay team.

LEFT TO RIGHT: Jerry Zitny, Roy Pellerin, Bob Patrick, and Ken Santer.



Robert "6 foot" Douglas clears six feet with ease in a practice meet with M.S.U.



Tennis coach Dr. McCulloch, C. Wilbanks, D. Perry, K. Krause, J. Stevens, J. Herkert, R. Valentine.

Tennis and Golf



ROW 1: P. Callahan, R. Taylor, B. Carson.
 ROW 2: Golf coach Maj. Perry, J. Frauenheim, R. Lawson, D. Wendling, D. Zickel.



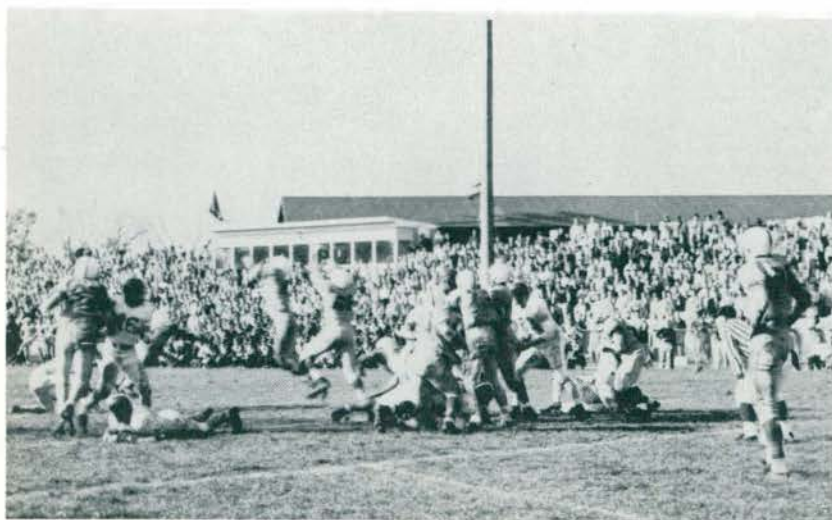
Before . . .

Bowen Field House

. . . After



Action, Action, Action . . .





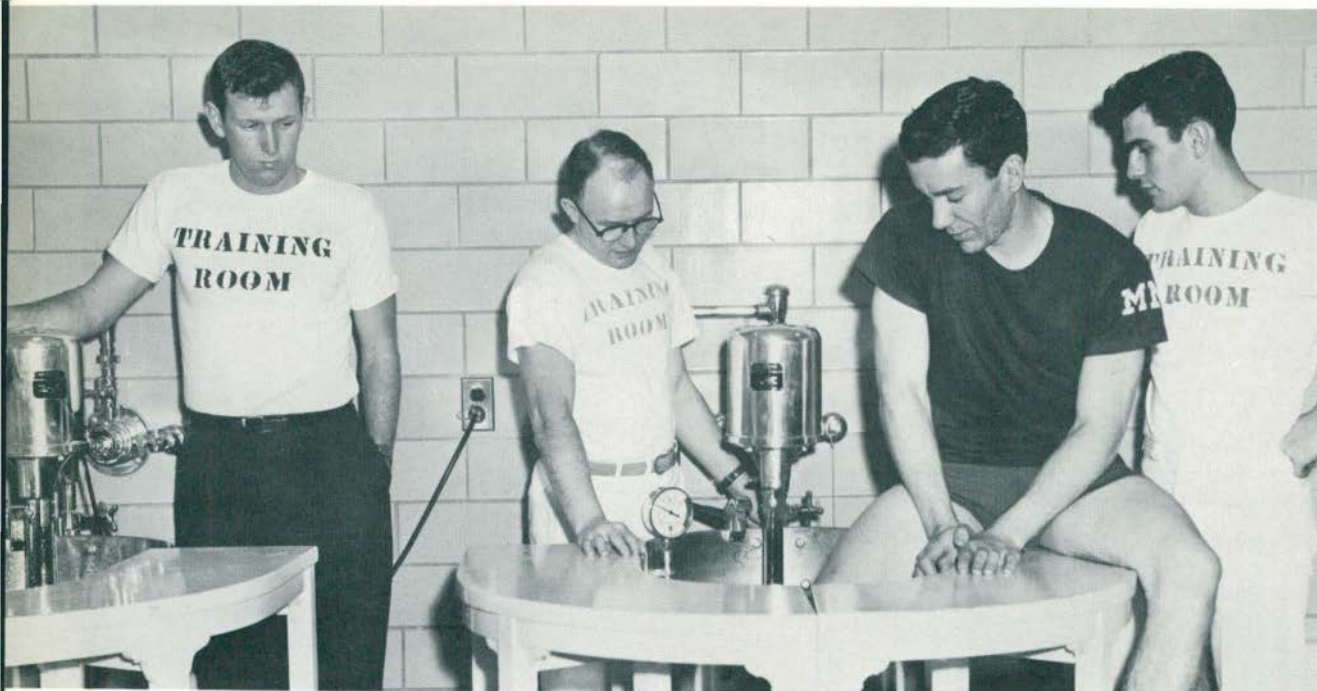
Aren't they having fun?

Intramural

The Michigan Normal Intramural Department has been a source of athletic activities for men for many years. It sponsors leagues for both fraternity and dorm men. The games begin in the fall with football and soccer. During the winter bowling, basketball, swimming, table tennis, and volleyball take place. Then, in the spring, softball and horseshoes are the athletic events.

A program of this type with over 1,500 men participating would be too much for one man. Under Floyd Olds' supervision, there are two I.M. managers, over 30 officials, and 50 dorm or fraternity managers.

Athletic Therapy



John Kromick, left, and Bob Vanni, right, watch as Merrill Hershey gives a demonstration of heat by using the hydrotherapy equipment.



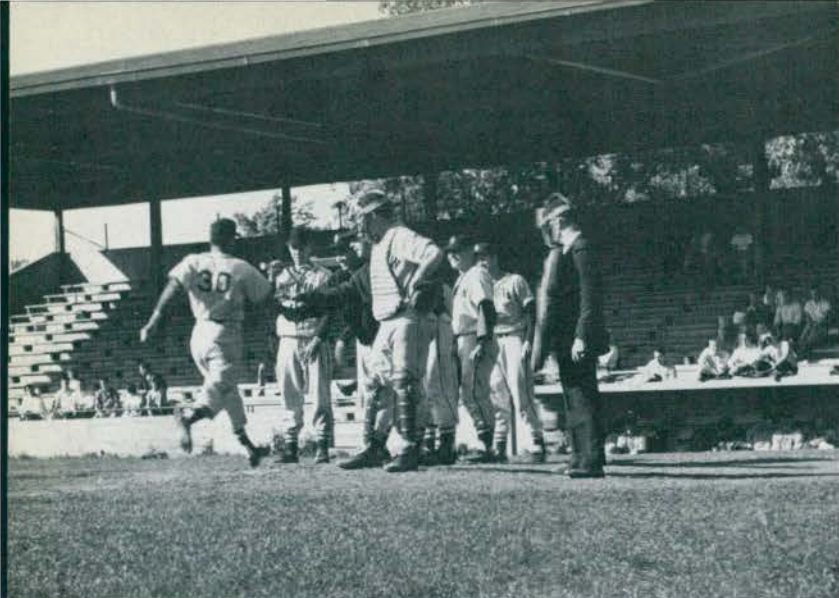
Merrill Hershey demonstrates to his assistants taping and strapping techniques.



ROW 1: R. Herring, M. Jones, E. Berkich, J. Lamb, L. McDonald, D. Searle, H. Goodhue, E. Berger, B. Birkle.
ROW 2: D. Rinckley, L. Cunningham, J. Wedge, B. Miller, J. Lepak, B. Mittlestat, B. Lewis.
ROW 3: J. Zickel, J. Czanko, C. Paige, J. Schandavel, N. Manych, D. Didon, L. Slepsky, D. Moseley, Coach Crouch.

Baseball

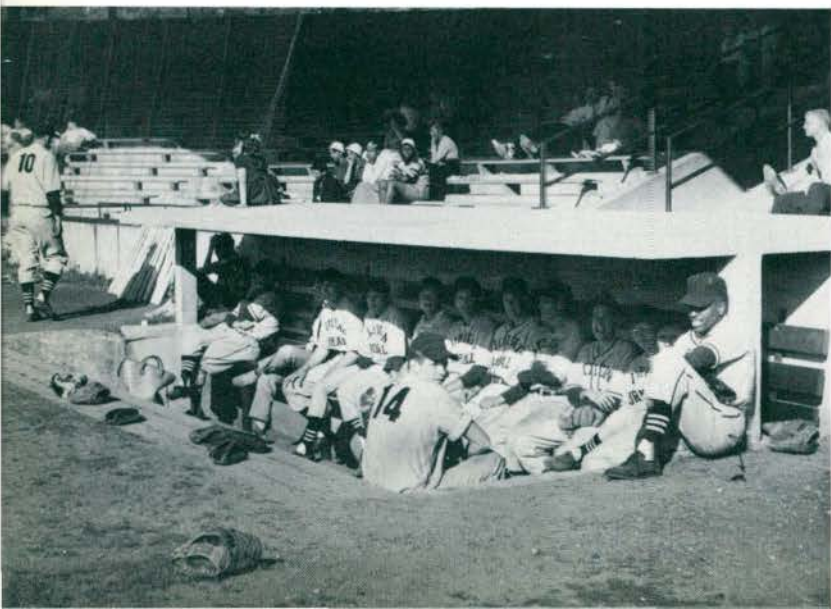
As this is written, the 1956 baseball season is being patiently awaited by Coach Bill Crouch. Although losing stars Dick Moseley, Nick Manych, and Jim Zickel via graduation, he still has many returning lettermen. Infielders Larry MacDonald, Jerry Wedge, and Joe Lepak will form an experienced group. Since two star infielders have graduated, Coach Crouch will have to find able men from his host of newcomers. An average pitching and catching staff is expected.



And the score goes up another notch.



The bull pen.



Home team at bat.

h o m e c o m i n g



HOMECOMING 1955



Homecoming Court at Assembly

Gwen Johnson escorted by Bob McCullough

Mary Cashman escorted by Bob Becker

Queen Valerie Leverton escorted by Barry Basel

Mercedes Marco escorted by Jim Haywood

Peg Borgstadt escorted by Bob Dank





Pillow Fight



Pole Rush



Dean Brown greets "Uncle Bob"—Class of '92



Best bearded men with the Queen

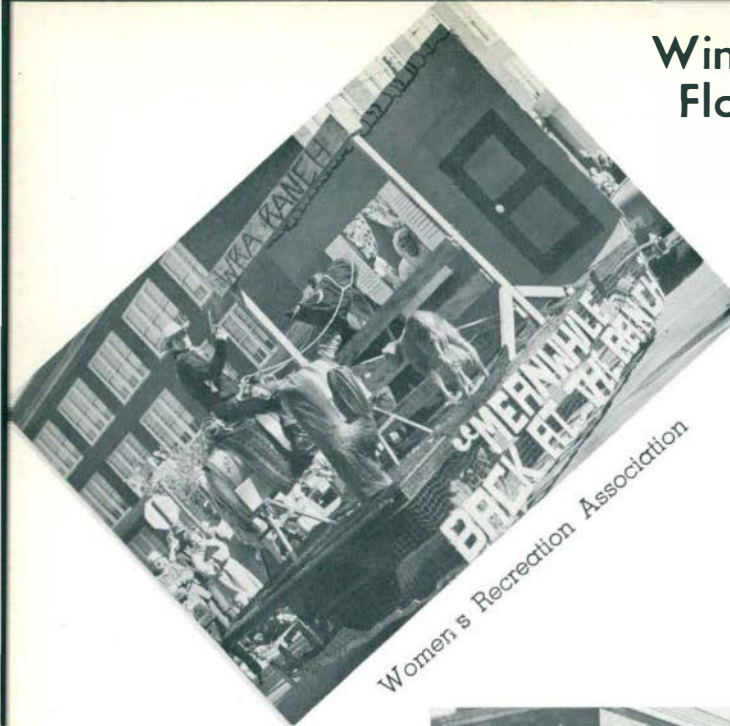
Queen Val with her trophy



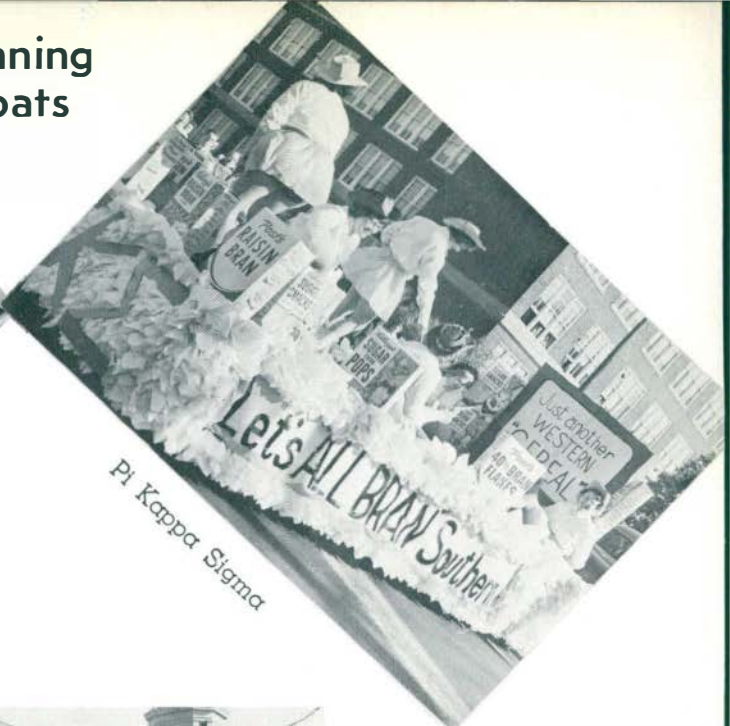
Court at Homecoming game



Winning Floats



Women's Recreation Association



Pi Kappa Sigma

Committee Chairman

Advisor Dr. Adelyn Hollis
 General Chairman . . . William Rose
 Parade . . . Dan Larsen, Burton Zander
 (Bands)
 Queens Ralph Morrow
 Parade Judging Jim Kitson
 Half-Time Ceremony . . Mike Groves
 Pep Rally Gisela Schlabit,
 Bob Halle



Sigma Tau Gamma

Extra Income Larry Marco,
 Pat Kennedy
 Bon Fire . . . Larry Wilson, Jim Fagan
 Class Games Don Kleinsmith
 Tuesday Assembly . . Paul Jablonski,
 John LaFever
 Beard Contest Lois Thackham,
 Marolin Bowen
 Publicity . . . Bob O'Brian, Ed Pioch
 Finance Lou Lemon, Ron Bridge

The Homecoming Planning Committee



Featuring . . . The Band



Band Members



Drum Major:

Norbert Sobolewski

Majorettes:

Sherri Brown

Joan Johnson

Gay Shaffer

Beverly Hickman

In the parade



On the field

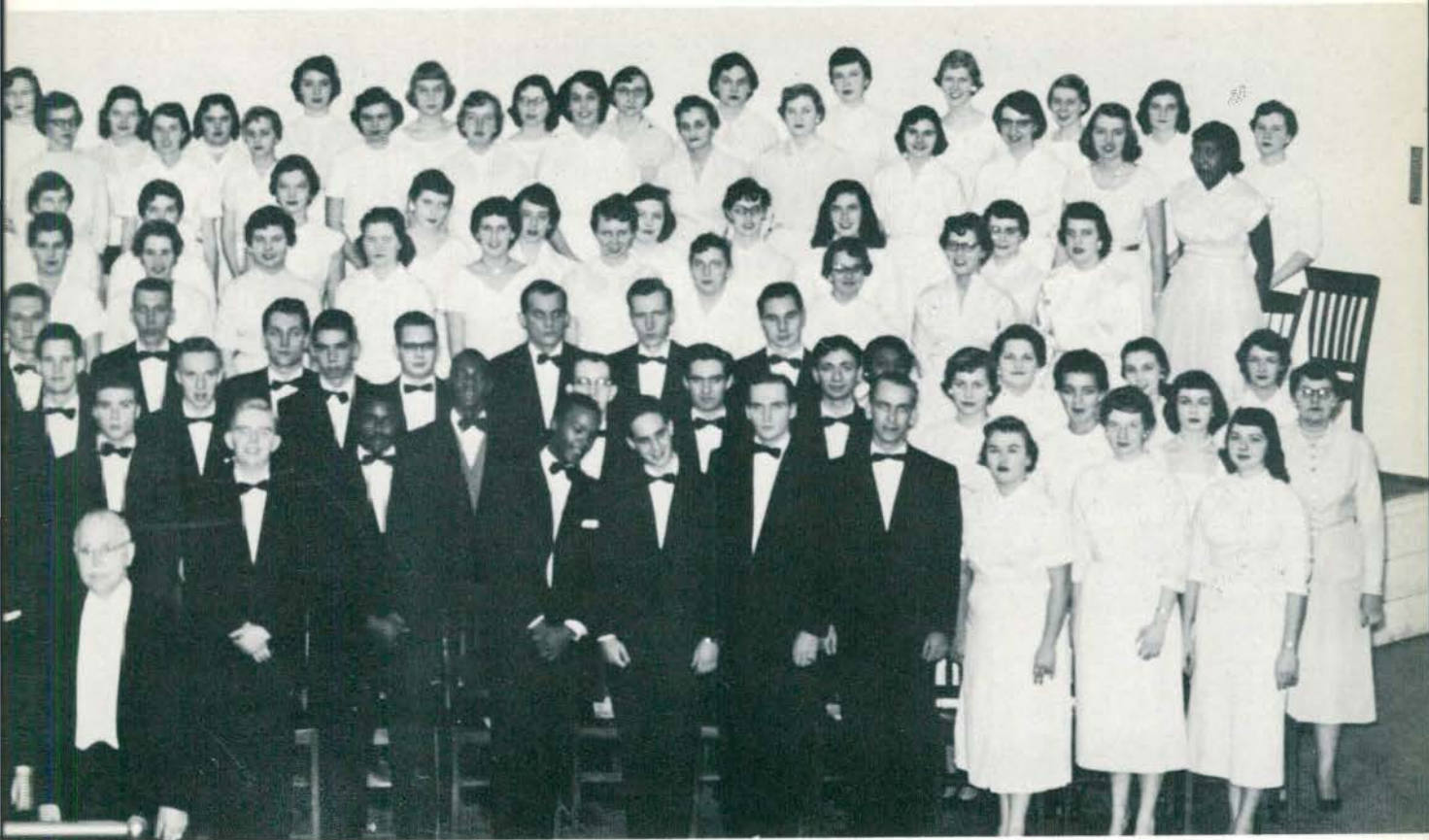


... the Choral Union and Choir



... the College-Civic Orchestra





Activities



The "strings" practicing. Left to right: P. Dombrowski, C. Wiseman, L. Bennett, M. Riley, professor, S. Fleischmann, C. Jacks.



The percussion section of the band. Left to right: P. Jackson, T. Jones, B. Carley, J. Papke, and H. Gucker.



Class Officers



Peggy Mahoney; David Wintrede, President; William Alcott
Freshman Class



Jim Stewart; Shirley Haddock; Don Adler, President; Sibby Rando
Sophomore Class



Linda Schupbach; Joe Lepack, President; Nadine Borswald; J. Ichorn.
Junior Class

Senior Ball



The Committee





OP



ALL CAMPUS CHRISTMAS PARTY



Aim — Fire!

Santa Baby . . .



Littlest Angels

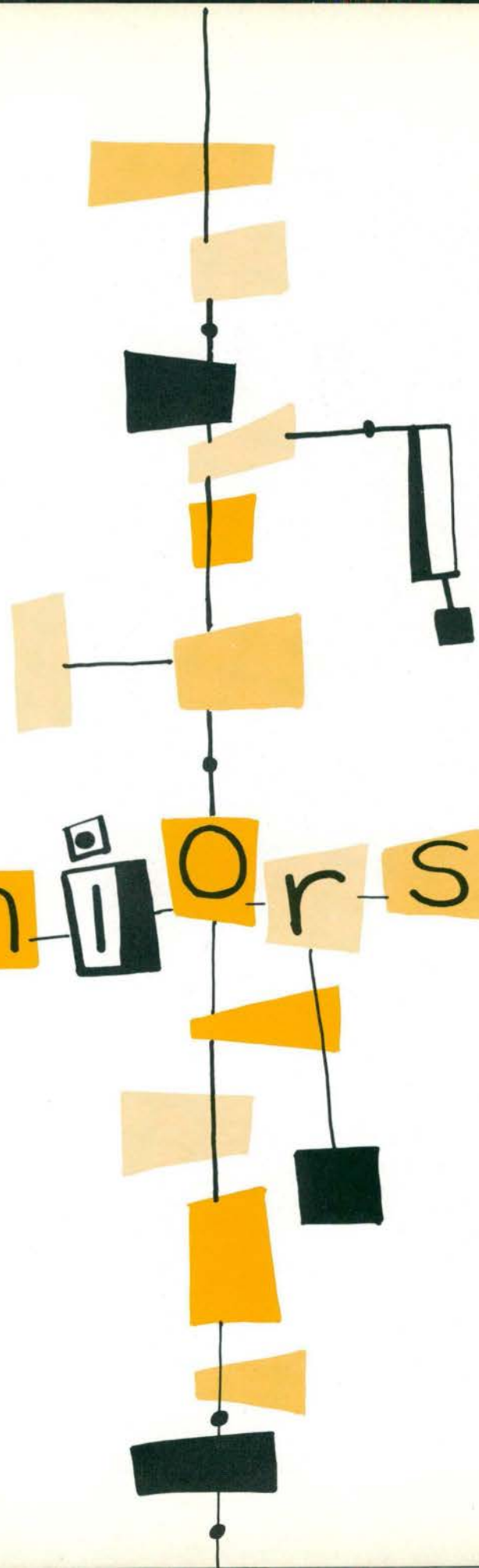


Bright Eyes!



Step Right Up

Seniors





Senior Class Officers

Mary Jo GambillTreasurer
Harvey HersheyVice-President
Gordon YatesPresident
Mr. Edmond GoingsAdvisor
Marita FisherSecretary

Adler, Laurel Joy
 Highland Park
 Library Science
 Library Club,
 Women's League

Allen, Frank
 Flint

Armstrong Patricia
 Ypsilanti
 Early Elementary
 Newman Club,
 History Club



Baldrige, Philip
Harrison
 Dearborn

Baldwin, Gloria
Lou
 Jonesville
 Special Education
 Sigma Nu Phi,
 Kappa Delta Pi

Bell, Barbara Jo
 Pontiac
 Physical Education
 President Sigma
 Nu Phi, Catalina
 Club



Blunt, Augustine
Durell
 Monroe
 Music Education
 Phi Mu Alpha,
 Kappa Alpha Psi,
 Band, Orchestra,
 Choral Union

Boggs, Teddy W.
 Ypsilanti
 Degree—Speech
 Tau Sigma Chi,
 President of
 M.S.N.C. Players

Boone, Daniel
Musgrave
 Ann Arbor



Bostwick, Leon
Paul
 Flint

Bozymowski, John
 Detroit
 Business
 Administration
 Alpha Gamma
 Upsilon, Newman
 Club

Brueckner, Theora
R.
 Alden
 Early Elementary



Bush, Peter A.
 Wayne
 Business
 Administration

Clay, Betty Jane
 Dearborn
 Special Education
 Choir, Special
 Educ. Club

Cocroft, Christine
 Ecorse
 Occupational
 Therapy
 Alpha Kappa
 Alpha,
 Occupational
 Therapy Club



Collier, Carol
Eloise
 St. Louis, Missouri
 Occupational
 Therapy
 Alpha Kappa
 Alpha
 Occupational
 Therapy Club

Cunningham,
Lawrence Henry
 Highland Park
 Physical
 Education
 Varsity Baseball,
 Varsity Club,
 Physical Education
 Club

Foley, Barbara
 Fenton
 High School
 Speech
 Sigma Sigma
 Sigma, Women's
 League, M.S.N.C.
 Players, King
 House Council and
 Advisory Board,
 Newman Club

Ford, Jean Shirley
Flint
Early Elementary
Delta Zeta,
Dormitory Council

**Grindstaff, Edith
May**
Ann Arbor
Pre-dental
Hygienist
Chemistry Club

**Haas, Constance
Mary**
Ypsilanti
Occupational
Therapy
Delta Sigma
Epsilon
Occupational
Therapy Club

Hastie, Joan Anne
Alpena

**Height, Antonette
Lulene**
Detroit
Home Economics
Alpha Kappa
Alpha, Home
Economics Club

**Heraper, Judith
Anne**
Ferndale
Occupational
Therapy

Hiller, Ann
Ann Arbor
Early Elementary
Delta Zeta

**Homer, Raymond
David**
Birmingham
History

**Kamigake, Elsie
Sumiko**
Honaunau, Kona,
Hawaii
Early Elementary

**Kelly, Valda
Williams**
Detroit
Early Elementary
Delta Sigma Theta,
Modern Dance
Club, Goodison
House Council

Kessler, William E.
Ypsilanti
Physics
Alpha Gamma
Upsilon
Newman Club

Kimura, Ella Eiko
Holualoa, Kona,
Hawaii
Early Elementary
Alpha Sigma Tau,
Kappa Delta Pi,
Women's League
Executive Board,
Counselor

**Kirschke, Jane
Stamos**
Armada
English
President Alpha
Xi Delta, Lambda
Iota Tau, English
Club, Director of
One-Act Play

**Kukovich, William
Robert**
Marlette
Industrial Arts
Kappa Phi Alpha,
Industrial Arts
Club

Lavoie, Thomas P.
Alpena
Recreation
Phi Sigma Epsilon,
Sigma Delta Phi,
Manager
Intramural
Athletics

Learmont, Richard
Detroit
History
Arm of Honor,
History Club,
Newman Club,
Pi Gamma Mu

Le Duc, Arlene
Dearborn
Early Elementary
Women's League,
English Club,
Stoics, Kappa
Delta Pi

**LeMay, Charles
Robert**
Walled Lake
Tau Sigma Chi





Lipka, Mary Louise
Dundee
State Limited

Lirette, Beverly Ann
Ann Arbor
Occupational
Therapy
Occupational
Therapy Club

McCullough, Robert William
Detroit
Physical Education
Varsity Club, Delta
Sigma Phi, Student
Council, Football
(4), Physical
Education Club



McDonald, Barbara Ann
Detroit
State Limited
State Limited Club,
Choral Union, Jones
Music Chairman

McPherson, Sandra Elizabeth
Sandusky

Mase, Loretta Jean
Detroit
Early Elementary



Moseley, Joan Holden
Trenton
Physical Education
Physical Education
Club, Majorettes
(4), W.R.A.

Murray, Ann S.
Dearborn
Art
M.S.N.C., Art Guild

O'Hare, Edward
Dearborn
Jr.-Sr. High



Ohlinger, Richard Dan
Ypsilanti
Chemistry

Pardee, Margaret A.
Concord
Music

Parker, Joanne Galpin
Ann Arbor
Physical Education
Modern Dance
Club, Physical
Education Club



Peake, Ray D
Detroit
Business
Administration
Kappa Phi Alpha,
Pi Omega Pi,
Business Club,
Men's Union

Poe, Mary Jean
Detroit
State Limited

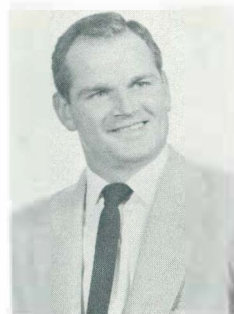
Poole, Barbara Ann
Dearborn
Early Elementary
Delta Sigma
Epsilon, M.S.N.C.
Players, Goodison
House Council,
Catalina Club,
Normal News



Reiser, Thomas C.
Carleton
Business
Administration
Kappa Phi Alpha

Rikley, Carol M.
Saginaw
Jr.-Sr. High
Sigma Nu Phi

Ritz, Edward L.
Ann Arbor
Business
Administration



Rosebrough, Sadie M.
Detroit
Jr.-Sr. High
English Club, Delta
Sigma Theta,
Lambda Kota Tau

Roselle, Joan
Brooklyn, N. Y.
Early Elementary
English Club,
Normal News

Russell, Dean A.
Ypsilanti
Industrial Arts
Industrial Arts
Club, Zeta Chi
Sigma

Sagamang, Beverly June
Pontiac
Later Elementary
Sigma Sigma
Sigma, Kappa
Delta Pi, Women's
League

Schild, Sarah Elizabeth Scott
Saline
Jr.-Sr. High

Schindler, George Daniel
Wayne
Business
Administration
Alpha Gamma
Upsilon

Schlabitz, Gisela
Detroit
Early Elementary
Women's League
Advisory Board

Sciarini, James F.
Detroit
Business
Education
Pi Omega Pi, Tau
Kappa Epsilon,
Business Club,
Varsity Basketball,
Varsity Football

Shara, Thomas Lew
Rochester
History
President History
Club, Pres.
Dormitory Council
Student Council,
Homecoming
Committee, Sigma
Tau Gamma,
Canterbury Club,
World Univ.
Service, Board of
Control of Student
Publications

Smith, Theodore H.
Centerline
Music Education
Zeta Chi Sigma,
Phi Mu Alpha

Sugiyama, Kathleen Kinuko
Holualoa, Kona,
Hawaii
Early Elementary

Thompson, June Davison
Early Elementary
Jones House
Council, Student
Council, Counselor

Todd, Robert J.
Ann Arbor

Turner, Josephine Lovetta
Ypsilanti
Later Elementary

Van Wagner, Hal I.
Morenci
Industrial Arts
Arm of Honor

Watkins, Everette I.
Ypsilanti
Physics
Alpha Gamma
Upsilon

Weller, Janet Worthington
St. Clair Shores
Early Elementary
Women's League
Executive Board,
Student
Council, Stoics.
Dorm Council,
Normal News,
Sigma Nu Phi

Wendling, Donald
Lexington
Economics
Tau Kappa Epsilon,
Newman Club,
Business Club,
Varsity Club,
Varsity Golf,
Fraternity Athletics



Wigent, Helen Marie
Walled Lake
Later Elementary
Sigma Nu Phi

Wilde, William John Henry
Ypsilanti

Wilson, Iris Valeria
Detroit
Early Elementary

Wiseman, Charles James
Allen Park, Mich.
Math.
Sigma Tau
Gamma,

Wolfe, Phyllis Carol
Detroit
Early Elementary
Alpha Sigma Tau,
Gamma Delta,
Choral Union



. . . . and now for June Graduates



Adams, Richard L.
Linden, Michigan
Physical Education
President Alpha Gamma Upsilon,
Physical Education Club

Agre, Chrystal
Ann Arbor, Michigan
Jr.-Sr. High School
Kappa Delta Pi,
Stoic Society

Alcini, Rosemarie
Royal Oak, Michigan
Early Elementary Education
Alpha Xi Delta Sorority, Student Council, Student Activities, Dorm Advisory Board



Alexander, Rosemary Adele
Ypsilanti, Michigan
Early Elementary Wesley Foundation,
English Club

Ambrose, Florence Jean
Milan, Michigan
Early Elementary Aurora Staff

Anderson, Peter C.
Ann Arbor, Michigan
Degree only



Andre, Eileen Marie
Detroit, Michigan
Jr.-Sr. High School
Alpha Xi Delta Sorority, Art Guild,
Newman Club

Aprill, Joan Louise
Ann Arbor, Michigan
Elementary

Arlen, Alice Truesdell
Wayne, Michigan
Early Elementary Sigma Nu Phi,
Panhellenic, Women's League,
Ad Board, Student Council

Arnold, Belva Storey
Brown City, Michigan
Home Economics Home Economics Club

Armstrong, Joyce Jean
Pontiac, Michigan
Secondary Chemistry Club,
Jones House Council, Christian Youth Fellowship

Aton, Phyllis
East Detroit, Michigan
Occupational Therapy
Treasurer and President of O. T. Club, Dorm Officer



Ausum, Mary
Flat Rock, Michigan
Jr.-Sr. High School
Mu Phi Epsilon, Choir

Babcock, Basil Carter
Petersburg, Michigan
Jr.-Sr. High School
Sigma Tau Gamma

Babcock, Donald F.
Detroit, Michigan
Business Education
Pres. Delta Sigma Phi, Student Representative of Athletic Board of Control, Pres. of Interfraternity Council



Babcock, Flora Nell

Bade, Martha
Imlay City, Michigan
State Limited Natural Science Club, Geog. Club, State Limited Club

Bailey, Zanola Roshion
Detroit, Michigan
Early Elementary Choir, Choral Union, Pres. Modern Dance, Freshman Ensemble, Community Service, Aurora, Delta Sigma Theta Sorority



**Baker, Doris M.
Grof**

Lansing, Michigan
State Limited
Future Teachers of
Amer., Art for Fun

Bakhaus, Elaine L.
Wyandotte,
Michigan
Physical Education
Stoic Society,
Choral Union,
W.R.A., Gamma
Delta

Banacki, Betty Joan
Flint, Michigan
Business
Education



Barkus, Donald C.
Flint, Michigan
Jr.-Sr. High
Alpha Gamma
Upsilon, I.F.C.,
History Club,
Natural Science
Club, Library Club

**Barwinski,
Patricia Ann**
Dearborn,
Michigan
Early Elementary
Delta Sigma
Epsilon, Transfer
Counselor, Dorm
Activities

Basel, Barry
Turtle Creek,
Pennsylvania
Jr.-Sr. High
Football



Batalucco, Roseann
Wayne, Michigan

Elementary Art
Sigma Nu Phi
Sorority, Class
Committees, Art
Guild, Choral
Union

**Bednarz, Lawrence
W.**
Inkster, Michigan
Business
Administration
Business Club

**Bennett,
Leslie Merland**
Madison,
Wisconsin
Music
Phi Mu Alpha



Benton, Dorothy A.
Northville,
Michigan
Later Elementary
Pi Kappa Delta,
Forensics Club,
Christian Science
Organ., Choral
Union

**Bernhardt, Phyllis
Ann**
Lakeside, Ohio
Occupational
Therapy
O.T. Club

Best, Mary Alice
Detroit, Michigan
Early Elementary
Newman Club,
Choral Union



**Beuschlein,
Harold Roy**
Ypsilanti,
Michigan
Degree only
Pres. Centro de
Espanol, German
Club, Lambda Iota
Tau, Literary
Honorary

Blazer, Constance
New Boston
Michigan
Occupational
Therapy
Stoic Society,
Occupational
Therapy Club,
Freshmen
Counselor

Bloomer, Royce G.
Flint, Michigan
Physical Education
Freshman Football,
Catalina Club,
Physical Education
Club



Booker, Nellie Mae

Borwick, Donna
Detroit, Michigan
Early Elementary
All College Social
Committee

Bowen, Marolin
Detroit, Michigan
Home Economics
Dorm Officer

Bradley, James
 Detroit, Michigan
 Special Education
 Special Education
 Club

Bridge, Ronald W.
 Saginaw, Michigan
 Business
 Administration
 Student Council,
 Tau Kappa Epsilon,
 Social Fraternity

Britz, Emma M.
 Romulus, Michigan
 Later Elementary
 Provisional
 Home-Dancing,
 4-H Clubs, P.T.A.



Broge, Marilyn
 Melvindale,
 Michigan
 State Limited
 Choral Union,
 Goodison Council,
 Stoic Society

**Brossia, Paul
 Frederick, Jr.**
 Monroe, Michigan
 Degree only
 M.S.N.C. Players,
 Lutheran Student
 Assoc. Men's
 Union, World
 University Service

Brown, Billy Jay
 Goshen, Indiana
 Jr.-Sr. High



Burger, Dorothea
 Milan, Michigan
 State Limited

Burke, Donald A.
 Detroit, Michigan
 Special Education

Burns, Robert E.
 Alpena, Michigan
 Business
 Administration



Butler, Ethel Jayne
 Detroit, Michigan
 Special Education
 Women's League,
 W.R.A. Basketball
 Special Ed. Club,
 Freshman
 Counselor, Modern
 Dance Club, Delta
 Sigma Theta
 Sorority

Butts, Joanne K.
 Detroit, Michigan
 Early Elementary

**Byrne, Donald
 Patrick**
 Lincoln Park
 Michigan
 Business
 Administration
 Alpha Gamma
 Upsilon



Callahan, James H.
 Wyandotte,
 Michigan
 Business
 Administration
 Business Club,
 M.S.N.C. Veterans,
 Spanish Club, Golf

Cerneant, Fred
 Detroit, Michigan
 Pre Law
 Delta Sigma Phi

Charron, Bonita
 Port Huron,
 Michigan
 Early Elementary
 Canterbury Club,
 Choir



Cheek, Lorine
 Dearborn,
 Michigan
 Later Elementary
 Sigma Sigma
 Sigma,
 Cheerleader,
 Homecoming
 Committee,
 Community Service
 King Counselor

Chiravola, Joan
 Dearborn,
 Michigan
 Jr.-Sr. High
 Alpha Sigma Tau,
 Stoics, Lambda
 Iota Tau, Kappa
 Delta Pi

**Churchill,
 Mae Belle**
 Flint, Michigan
 Early Elementary





Clark, Kathryn
St. Johns,
Michigan
Special Education
Special Education
Club, Choral Union,
Vice Pres.
Goodison

Clough, Ida M.
Adrian, Michigan
Early Elementary
Choral Union,
Natural Science
Club

Collard, Peggy L.
Ypsilanti,
Michigan
Jr.-Sr. High



Collins, John
Keego Harbor,
Michigan
Industrial Arts
Pres. Zeta Chi
Sigma, Stoic,
Student Council,
Men's Union

Conachen, Gerald
Detroit, Michigan
Education
Zeta Chi Sigma

Cornell, Joan K.
Detroit, Michigan
Early Elementary
Alpha Sigma Tau



Coville, Diane
Wayne, Michigan
Physical Education
W.R.A., Physical
Education Club

**Craver, Pauline
Nancy**
Alexandria,
Virginia
Occupational
Therapy
Ass't. Corridor
Chairman

Crego, Ondalee
Cement City,
Michigan
Early Elementary



Culver, Gorman
Adrian, Michigan
Business
Administration
Future Business
Leaders of
America

Curry, Essie
Detroit, Michigan
Early Elementary

Dame, Irene
Flat Rock,
Michigan
State Limited
Newman Club



**Davidson,
Mary Etta**
Detroit, Michigan
Early Elementary
Delta Sigma Theta,
Pres., Correspond-
ing Secretary
Panhellenic

Dawson, Anna
Royal Oak,
Michigan
Jr.-Sr. High
Sigma Sigma
Sigma Sorority

Day, Jerald Ralph
Jackson, Michigan
Jr.-Sr. High



**Dehnke, Ronald
Earl**
Detroit, Michigan
Jr.-Sr. High
M.S.N.C. Players,
Alpha Gamma
Upsilon

**Dennison,
Ellen Grace**
Vernon, Michigan
Physical Education
W.R.A., Physical
Education Club,
Senior Dorm
Counselor

DeRose, Dominic
Dearborn,
Michigan
Later Elementary



Devendorf, Ann E.
Grosse Point,
Michigan
Home Economics
Home Economics
Club, Women's
League, Goodison
Advisory Board

DeWitt, Caroline
Flint, Michigan
Jr.-Sr. High

Diaz, Ross L.
Plymouth,
Michigan
Jr.-Sr. High
Sigma Tau
Gamma, Student
Council, Men's
Union, Dorm
Council

**Dickelman,
Robert E.**
Detroit, Michigan
B.A. Degree
Phi Sigma
Epsilon

**Dina, Julius
Adebayo**
Lagos, Nigeria
B.A. Economics
Chemistry Club,
Student Volunteer
Movement, Pi
Gamma Mu, Ir-ter-
national Club

Donnelly, Arthur J.
Plymouth, Michigan
Business
Administration
Future Business
Leaders of America

Doty, Marjorie
Holly, Michigan
State Limited
I.V.C.F.

**Duby, Joseph
Stephen**
Highland Park,
Michigan
Physical Education
Tau Kappa
Epsilon

**Easterling,
Vernon J.**
Wyandotte,
Michigan
B.S. Degree
Zeta Chi Sigma

**Ekstrom,
Sven Peter**
Ann Arbor,
Michigan
Degree only

Eseman, Carol
Royal Oak,
Michigan
Physical Education
W.R.A., Physical
Education Club,
Catalina Club

Eslinger, Pat
Birmingham,
Michigan
Early Elementary
W.R.A., Future
Teachers of Amer.,
Science Club, Pres.
Jones Hall

**Ethridge,
Donald Eugene**
Monroe, Michigan
Jr.-Sr. High
English Club

Everard, J. Larry
Ypsilanti,
Michigan
Art Education
Art Club, Treas.

**Fairbanks, David
N.**
Ypsilanti,
Michigan
Business Education
Band, Alpha
Gamma Upsilon

**Fantow,
Claire Ruth**
Detroit, Michigan
Jr.-Sr. High
Alpha Sigma Tau,
Math Club,
German Club,
Goodison House
Council

**Ferguson, David
Ford**
Ann Arbor,
Michigan
Business
Administration
Future Business
Leader of Amer.,
Student Council,
Phi Omega, Scout
and Explorer
Leader

Fisher, Marita
Battle Creek,
Michigan
Occupational
Therapy
Alpha Xi Delta, Sr.
Class Sec., Home-
coming Court,
Alpha Psi Omega,
O.T. Club,
M.S.N.C., Players,
Dorm. Council

Fisher, Yvonne Roscommon, Michigan Later Elementary Alpha Sigma Tau Sorority	Fitzgibbon, Donald B. Detroit, Michigan Sr. High Phi Sigma Epsilon, I.F.C. Representa- tive	Forton, Jane Suttons Bay, Michigan Later Elementary Newman Club	Friedly, Shirley Pontiac, Michigan Later Elementary Stoics, L.S.A., Pi Kappa Sigma, Panhellenic Council	Fox, Patricia Ann Ann Arbor, Michigan Early Elementary	Fundkian, Mae Highland Park, Michigan Secondary
--	---	--	---	--	---

Gagnon, Maurice Leo Sault Ste. Marie, Michigan Social Case Work	Gambill, Mary Jo Flint, Michigan Early Elementary and Social Work Alpha Xi Delta Sorority, Student Council Secretary, Senior Class Treas- urer, Dorm Repre- to Student Council	Garbrecht, Dorothy Lucille Muskegon, Michigan Later Elementary Alpha Xi Delta	Gerweck, Richard Monroe, Michigan State Limited	Gilman, Esther Willis, Michigan Later Elementary Stoic Society	Glenn, Gretchen Detroit, Michigan Early Elementary Choral Union
---	--	--	--	--	---

Gould, Robert Donald Ann Arbor, Michigan Physical Education Cross Country and Track, Delta Sigma Phi, Canterbury Club, Physical Education Club	Gould, Nancy Ann Ford Detroit, Michigan Later Elementary Women's League Executive Board, Stoics, Canterbury Club, S.R.A. Representative	Grebe, Betty Marie Detroit, Michigan Early Elementary Choral Union, Lutheran Student Association	Green, Emma Tecumseh, Michigan Later Elementary	Greene, Willie G. Detroit, Michigan Industrial Arts Industrial Arts Club, Track, Football, Kappa Alpha Psi	Grigorian, Jacob Dearborn Michigan Later Elementary
---	---	--	---	---	---





**Griffitts,
Jacquelyn Bilkey**
Dearborn,
Michigan
Early Elementary
Panhellenic Council,
Women's League Exec.
Board, Student Organ.
Committee, Alpha Sigma Tau

Gural, James R.
Dearborn,
Michigan
Jr.-Sr. High
Zeta Chi Sigma,
Interfraternity Council,
Band

**Gustafson,
Rose-Marie**
Flint, Michigan
Special Education
Drama, Bowling,
Modern Dance,
Special Educ.



Haddix, Shirley
Monroe, Michigan
State Limited
Vice Pres. Soph.
Class, Advisory Board
of Women's League,
Newman Club

Halle, Bruce

Hamelin, John L.
Ypsilanti,
Michigan
Jr.-Sr. High



Hancock, Thelma

**Hargreaves,
Ralph C.**
Wayne, Michigan
Secondary

Hawarny, Phillip J.
Milan, Michigan
Physical Education
and Science
Pres. Sigma Tau
Gamma, Men's
Union Executive
Board, Varsity
Basketball

**Hayden,
Janet Locke**
Royal Oak,
Michigan
Early Elementary

**Hemingway,
Elizabeth**
Otter Lake,
Michigan
State Limited

Hershey, Harvey
Detroit, Michigan
Special Education
Arm of Honor,
Vice-Pres. Senior
Class, Sec. I.F.C.
Special Ed. Club



Hilla, Ronald C.
Ann Arbor,
Michigan
Business
Administration

Hobbs, Pat
St. Louis, Missouri
Occupational
Therapy
Pres. of Delta Zeta,
O.T. Club

Holappa, Fred C.
Dearborn,
Michigan
Natural Science
Sports



Hood, Joyce Marie
Highland Park
Michigan
Later Elementary
Sigma Nu Phi, King
Dorm Advisory
Board

Hood, Mary Nancy
Ypsilanti,
Michigan
State Limited
Catalina Club

Hooper, Joseph L.
Flint, Michigan
Jr.-Sr. High
Kappa Sigma
Kappa, Math
Club, Vets
Association



Howell, Bess L.

Flint, Michigan
Physical Education
V. Pres. Physical
Ed. and Rec. Club,
Sec. WRA,
Catalina Club

Hughes, Alice

Lapeer, Michigan
Later Elementary
Modern Dance,
Choral Union,
Alpha Sigma Tau,
Freshman Girl
Ensemble

Hunt, Mary Kay

Ann Arbor,
Michigan
Secondary
Education
Corr. Sec. Delta
Sigma Epsilon,
Orientation
Program, M.S.N.C.
Players



Hunter, William O.

Keego Harbor,
Michigan
Jr.-Sr. High
Zeta Chi Sigma—
Sec., Pi Gamma
Mu

Hurbis, John Joseph

Milan, Michigan
Business
Administration
Phi Sigma Epsilon
—Pres., V. Pres. Jr.
Class, V. Pres. Stu-
dent Council,
Business Manager
—Normal News

Jameson, Philip S.

Ypsilanti,
Michigan
Jr.-Sr. High
Track, English Club



Johnson,

Gwendolyn L.

Wayne, Michigan
Business
Administration
Alpha Sigma Tau,
Business Club

Josey, Virginia

Maywood, Illinois
Early Elementary
WRA Board, Alpha
Kappa Alpha,
Modern Dance
Club

**Jubenville, Joyce
Townsend**

Lincoln Park,
Michigan
Early Elementary
Alpha Sigma Tau,
Lambda Iota Tau,
Choral Union,
Freshman
Counselor



Kavie, Joanne P.

Wyandotte,
Michigan
Music
Choir, Choral
Union, Newman
Club, Mu Phi
Epsilon, Band,
Freshman Girls
Ensemble

**Kehrer, Carole
Roldean**

Wyandotte,
Michigan
Later Elementary
Stoics—Treas.,
Kappa Delta Pi—
Pres., Dorm Ad.—
Board, Dorm Coun-
selor, Choral Union,
Gamma Delta

Keith, David G.

Ypsilanti,
Michigan
General Degree
Pi Alpha, Lambda
Iota Tau



**Kelly, Joyce
Blashill**

Grosse Pointe,
Michigan
Early Elementary
Delta Zeta, Sec. Jr.
Class, Treas. Jones
Dorm, Women's
League

Kennedy, Ronald J.

Dearborn,
Michigan
Jr.-Sr. High
Alpha Gamma
Upsilon, Newman
Club—Pres.,
Student Court

Kenney, Shirley

Lexington,
Michigan
Early Elementary
Band, Aurora Staff,
Dorm House
Council



Kessler, Mary Ann

New Baltimore,
Michigan
State Limited
Newman Club

Kiessel, Barbara

Ypsilanti,
Michigan
Early Elementary
Panhellenic Coun-
cil, Delta Zeta, His-
tory Club, M.S.N.C.
Players, Wesley
Foundation

King, JoAnne

Coldwater,
Michigan
Art Education
N.A.E.A.



King, Roberta
Commerce,
Michigan

Early Elementary
Delta Zeta, Jones
House Council,
Women's League
Advisory Board

Kinsey, Lyle C.
Detroit, Michigan
Jr.-Sr. High
English Club, Pi
Gamma Mu, Zeta
Chi Sigma

Kinnaird, William
Wayne, Michigan
Special Education
Special Education
Club



Kirk, Julie
Adrian, Michigan
State Limited
Dorm Officer

Kleinsmith, Don
Monroe, Michigan
Jr.-Sr. High
Pres. Men's Union,
Christian Science
Organ, Pres. Nor-
mal News, Sports
Editor, Brown Dorm
Council, Vice-Pres.

Krzs, Frances K.
Ypsilanti,
Michigan
Business Education



LaCrosse, Joan
Escanaba,
Michigan
Occupational
Therapy
Choral Union, O.T.
Club, Pres. Sigma
Nu Phi

Lake, Janice

**Lamberson,
Charles D.**
Ann Arbor,
Michigan
B.S. Degree



Lemon, Lamora L.
Dearborn,
Michigan
Later Elementary
Women's League,
Pi Gamma Mu

**Levack, Joseph
Harold**
Glens Falls
New York
Business
Administration
Phi Sigma Epsilon

**Levely, Virginia
Rae**
Pontiac, Michigan
Early Elementary
Catalina Club,
English Club



Lewelling, William
Lincoln Park,
Michigan
Business
Administration
Arm of Honor

**Lichtenstein,
Marvin Sidney**
Detroit, Michigan
Jr.-Sr. High
Pres. Munson Hall,
Pres. History Club,
Hillel Club, Sigma
Tau Gamma,
Homecoming

Lindgren, Charlotte
Toronto, Ontario
Occupational
Therapy



Liston, Mary Jo
Detroit, Michigan
Jr.-Sr. High
Alpha Xi Delta
Sorority, Modern
Dance Club, God-
dard Hall Advisory
Board, English Club

Locas, Claude
Montreal, Canada
Pre Law
Alpha Gamma
Upsilon

Logie, Betty Jean
Walled Lake,
Michigan
Early Elementary
Sigma Sigma
Sigma, Sr. Ball
Committee, Sr.
Musical





Lympers, Helen
Detroit, Michigan
Early Elementary



**McCollum, Bill
Cornell**
River Rouge,
Michigan
Jr.-Sr. High
Kappa Alpha Psi



**McCrumb,
Bernadette**
Ypsilanti,
Michigan
Jr.-Sr. High



**McDonald,
Barbara Jean**
Detroit, Michigan
Business Education
Modern Dance
Club, Business Club,
Alpha Sigma Tau



**MacDonald,
Marion Jane**
Romeo, Michigan
Music Education
Choral Union, Nor-
mal Choir,
Women's League
Executive Board,
Jones Hall Advisory
Board, House
Council



**McDonald,
Laurence J.**
Dearborn,
Michigan
Physical Education
Tau Kappa Epsilon,
Varsity Baseball



**McIntyre, Donna
Vivian**
Wayne, Michigan
Physical Education
W.R.A., Physical
Education Club,
W.R.A. Board



**McKay, Lois
Evelyn**
Detroit, Michigan
Later Elementary
President—King
Dorm, Sigma Nu
Phi, Women's
League Community
Service Chrm.,
Junior Dorm Sec.,
Dorm House
Council



**McKibbin, Joyce
Roeser**
Dearborn,
Michigan
Early Elementary
Delta Zeta Sorority



**MacLennan,
Mary Margaret**
Port Nelson,
Ontario
Jr.-Sr. High
Inter-Varsity Chris-
tian Fellowship,
Dorm Sec., Natural
Science Club



McMath, Julie
Wayne, Michigan
Business Education
Pi Omega Pi



McNamara, John F.
Dearborn,
Michigan
Secondary
Education
Newman Club



Mackey, Ray
Grand Rapids,
Michigan
Degree
Tau Kappa Epsilon,
Student Counselor
Munson Scholar-
ship, Dorm V. Pres.



**Madison,
Barbara Nancy**
Trenton, Michigan
Early Elementary
Goodison
Counselor, Lambda
Beta Tau



**Marley, Lillian
Rae Gordon**
East Detroit,
Michigan
Later Elementary
Pres. English Club,
Senior Ed. Aurora,
Alpha Sigma Tau,
Goodison House
Council, Goddard
Governing-body,
L.S.A., Women's
League Advisory
Board



Marriott, George
Wayne, Michigan
Teaching-History
Delta Upsilon, Phi
Mu Alpha Sinfonia,
Choral Union,
Senior Ball



Marshall, J. U.
Ann Arbor,
Michigan
Education



Mastori, Chryssi
Athens, Greece
English, Sociology,
French
English Club,
Stoics, Concepts
Magazine



Mawby, Leroy
St. Clair Shores,
Michigan
Physical Education
Football, Baseball,
Basketball

**Meadows, Phyllis
Anne**
Detroit, Michigan
Occupational
Therapy
O.T. Club, Stoics,
Kappa Delta Pi

Miller, Ellen
Detroit, Michigan
Early Elementary

Miller, Harold F.
Port Huron,
Michigan
Education

Miller, Jack
Taylor Center,
Michigan
Jr.-Sr. High
Pres. C.Y.F.

Minick, Merlyn
Willis, Michigan
Pre-Medicine
Natural Science
Club

Mink, Shirley
Monroe, Michigan
State Limited
Choral Union,
Freshmen Ensemble,
Stoics

Mitchell, J. Austin
Detroit, Michigan
Physical Education

Mobley, Donald R.
Flint, Michigan
Jr.-Sr. High

Moehl, Margaret F.
Ann Arbor,
Michigan
Early Elementary

Montooth, Marilyn
Dearborn,
Michigan
State Limited
Inter-Varsity
Christian
Fellowship

Moore, Shirley Joan
Baldwin,
Michigan
Early Elementary
Dance Club

Moran, Martha Lee
Escanaba,
Michigan
Special Education
Special Education
Club, College
Choir, Choral Union,
I.C.E.C., S.R.A.
Council,
Canterbury Club

**Morris, Beverlee
Jane**
Huntington Woods,
Michigan
Physical Education
Delta Zeta, Fresh-
man Counselor,
W.R.A.

Mouganis, Harriet
Ypsilanti,
Michigan
Early Elementary
Sigma Nu Phi, His-
tory Club, English
Club, C.Y.F.

**Murphy, Vera
Myrtle**
Pontiac Michigan
Early Elementary
Pi Kappa Sigma,
Catalina Club

Nelson, Mollie E.
Lapier, Michigan
State Limited
Choral Union,
Intervarsity Club

Nelson, Robert Lee
Detroit, Michigan
Later Elementary

Newcombe, F. Marie
Ypsilanti, Michigan
Lcter Elementary

Niehaus, Paul J.
Chelsea, Michigan
Jr.-Sr. High
Pres. Tau Sigma Chi, Phi Omega, Natural Science Club

Norton, Joanne
Detroit, Michigan
Jr.-Sr. High
Alpha Sigma Tau

Oakes, Allan Martin
Detroit, Michigan
Industrial Arts
Phi Sigma Epsilon

Oakes, N. Marie
Crosswell, Michigan
Early Elementary
Modern Dance Club, Newman Club, F.T.A.

O'Hara, Daniel P.
Ypsilanti, Michigan
Business Administration
Business Club

Olah, Irma
Detroit, Michigan
Early Elementary
Alpha Xi Delta—Pres., Women's League Social Chr., Women's League Advisory Bd., Goddard Advisory Bd.

Oliver Justin C.
Dearborn, Michigan
Business Administration

Parker, Frederick Walsh
Detroit, Michigan
Special Education
Newman Club, Special Education Club

Parker, Richard D.
Ann Arbor, Michigan
History

Parsons, Leonard H.
Rogers City, Michigan
Physical Education
Physical Education Club, Kappa Phi Alpha, Newman Club

Patton, Claire
Livonia, Michigan
Early Elementary

Payne Dorothy L.
Ypsilanti, Michigan
Business Education
Pi Omega Pi, Christian Science Organization, Business Club

Penny, Edward J.
Flint, Michigan
Business Administration
Tau Kappa Epsilon, Track, F.B.L.A.

Picard, Clyde J.
Dearborn, Michigan
Jr.-Sr. High
Veterans Union—treas.

Picard, Doreen Irene
Taylor Center, Michigan
Jr.-Sr. High
Delta Zeta, Aurora, Women's League Advisory Board

Pierce, Agnes Duncan
Flushing, Michigan
Secondary Teaching

Pitton, Claudette
Ypsilanti, Michigan
Art Education, Art Guild
Art Ed. Aurora





Popp, Marilyn June
Allenton,
Michigan
State Limited
Stoics, Natural Science
Club, Geography
Club, State
Limited Club

Powers, Milton O'Neal
Dearborn,
Michigan
Jr.-Sr. High
Delta Sigma Phi,
Track Team

Prater, Nancy
Huntington,
West Virginia
Occupational
Therapy
O.T. Club, Student
Council, Alpha Xi
Delta, W.R.A.,
Women's League



Prichard, Doris Elizabeth
Onsted, Michigan
State Limited
Natural Science
Club, Geography
Club

Provan, James Graham
Flint, Michigan
Secondary
History Club, Pi
Gamma Mu

Provenza, Frank
Dearborn,
Michigan
Business Education



Ramsey, Sharie Husted
Pontiac
Michigan
Early Elemnetary
Alpha Xi Delta,
Panhellenic
Council, Newman
Club, Dorm House
Council

Rankin, Joanne
Port Huron,
Michigan
Jr.-Sr. High
Inter-Varsity
Christian
Fellowship

Rankin, Joyce Dean
Ypsilanti,
Michigan
Early Elementary
Modern Dance

Renton, Shirley Ann
Ann Arbor,
Michigan
Occupational
Therapy
O.T. Club

Reske, Kathleen
Anchorville,
Michigan
Early Elementary
W.R.A., Tennis,
Softball, Badm.,
Volleyball, Gamma
Delta, King House
Council

Richmond, Alice Kathryn
Bear Lake,
Michigan
State Limited
State Limited Club



Riederick, Marjorie
Flint, Michigan
Teaching

Rivkin, Fredric A.
Detroit, Michigan
Jr.-Sr. High
Pres. of Hillel, Sec.
of Phi Omega,
Dorm Council
Brown Hall Social
Committee, Senior
Ball Committee

Robertson, Roy James
Ecorse, Michigan
Pre-Dentistry
Basketball, Pi
Kappa Delta,
Kappa Alpha Psi,
Human Relations,
F.I.C.



Rogers, Chester A.
Detroit, Michigan
Industrial Arts
Alpha Phi Alpha

Romanow, Stella
Detroit, Michigan
Library Science
Library Club

Ross, Marilyn Kay
Allen Park,
Michigan
Early Elementary



Rowe, William C. Jr.

Mandan, North Dakota
Teaching

Ruark, Don R.
Wayne, Michigan
Jr.-Sr. High
Physical Education

Rudenko, Alex P.
Jackson, Michigan
Jr.-Sr. High



Salow, Jerry D.
Ypsilanti, Michigan
Degree Only

Sarkany, Leo E.
Dearborn, Michigan
Secondary Teaching

Saunders, Richard



Schickler, Mary
Lapeer, Michigan
Library Science
Library Science Club, Alpha Xi Delta

Schlachter, Janice
Ypsilanti, Michigan
Business Education
Business Club, FBLA, Pi Omega Pi, Modern Dance, Delta Sigma Epsilon, Pres.

Schmauch, Jerry Joe
Ecorse, Michigan
Jr.-Sr. High
Phi Sigma Epsilon



Schoenhals, Betty Jackson
Berkley, Michigan
Later Elementary
Kappa Delta Pi

Schmitt, Barbara

Scrivens, Mary Joan
Ypsilanti, Michigan
Early Elementary
Wesley Foundation, Pi Kappa Sigma



Seng, Ken
Dearborn, Michigan
Jr.-Sr. High
Kappa Phi Alpha, Men's Union, Pi Gamma Mu

Shaw, Janet Lou
Detroit, Michigan
Early Elementary

Shea, Robert



Shepherd, Carol
Newberry, Michigan
Special Education
Special Education Club, English Club, Natural Science Club, Delta Zeta

Sherley, Mary
Royal Oak, Michigan
Jr.-Sr. High
All Campus Social Committee, Alpha Xi Delta

Shonk, Mary Ann
Wyandotte, Michigan
Occupational Therapy
Delta Sigma Epsilon, Panhellenic, Kappa Delta Pi, O.T. Club, Student Council—Sec. Newman Club, Normal News, Aurora

**Signor, Bernona
Beth**

Ypsilanti,
Michigan

Early Elementary
Pi Kappa Sigma,
Library Club, Stoics,
Lambda Iota Tau,
Kappa Delta Pi

**Simon, Damon
Alton**

Trenton, Michigan
Business Education
Pi Omega Pi

Slepsky, Lawrence

Melvindale,
Michigan
Physical Education
Physical Education
Club, Varsity
Baseball



**Smith, Francis
Gerald**

Detroit, Michigan
Pre-Law
Track, Debate
Team, History Club

Smith, Lucius E.

Honor, Michigan
Jr. High
Geography Club

Smith, Warren D.

St. Clair, Michigan
Jr.-Sr. High
Tau Kappa Epsilon,
Geography Club



**Sperling, William
D.**

Ypsilanti,
Michigan
Later Elementary
Geography Club,
Phi Delta Pi

Spieth, William

**Steinhart, Earl
Michael**

River Rouge
Michigan
Business Education
Sigma Tau
Gamma, Aurora,
Baseball



Stephens, Ima Jean

Detroit, Michigan
Music Education
Choir, Choral
Union, Alpha
Kappa Alpha

Stepp, Erika Joann

Turtle Creek, Pa.
Occupational
Therapy
Alpha Sigma Tau
Goodison Hall Ad.
Board

Steward, Robert

Port Huron,
Michigan
State Limited



**Sullivan, Patricia
Ann**

Detroit, Michigan
Early Elementary
Delta Sigma
Epsilon

Suminski, H. L.

Detroit, Michigan
Jr.-Sr. High

**Summers, Barbara
Waldorf**

Waukegan, Illinois
Occupational
Therapy
Student Council,
Dormitory Council,
C.Y.F. Student Or-
ganization's Com-
mittee, Election's
Com., Alpha Xi
Delta, Kappa Delta
Pi.



Takara, Kenji

Oroku, Okinawa
Degree Only

Tamblyn, Martha

Detroit, Michigan
Later Elementary
Alpha Sigma Tau,
Choral Union,
Goodison House
Council

Tanabe, Helen Y.

Ann Arbor,
Michigan
Occupational
Therapy
O.T. Club





Taylor, Mary A.
Willow Run,
Michigan
Special Education
Special Education
Club



Terry, Doris Jean
La Salle, Michigan
State Limited
Intervarsity, New-
man Club, English
Club, Aurora Staff,
State Limited Club



Terry, Mary Sue
Monroe, Michigan
State Limited
Newman Club,
Choral Union



Thackham, Lois
Newberry,
Michigan
Special Education
Special Education
Club, Delta Zeta, V.
Pres. of Dorm



Thackham, Richard
Newberry,
Michigan
Jr.-Sr. High



Thomas, Mary Jean
Saginaw,
Michigan
Jr.-Sr. High



Thrush, Janet Ruth
Dearborn, Michigan
Later Elementary
Normal News
Editor



Tragge, Jane
Detroit, Michigan
Early Elementary
Sigma Sigma
Sigma, Student
Council, Jones
House Council



Travis, Beverly
Mt. Morris,
Michigan
State Limited



Tucker, Noble
Ypsilanti,
Michigan
Business Education
Business Club Pres.,
Pi Omega Pi Pres.,
Future Business
Leaders of America
Pres.



**Uptegrove, Fred
C.**
Northville,
Michigan
Recreation
Recreation Club



Valentine, Ronald
Dearborn, Michigan
Jr.-Sr. High
English Club Pres.,
Dorm V. Pres.,
Tennis



**Barbara Jean
Vandecar**
Belleville,
Michigan
State Limited
Pi Kappa Sigma



**Van Den Branden,
Rene, Jr.**
Caracas,
Venezuela
Degree Only



**VanderMeer,
Jane Alison**
Waterbury, Conn.
O.T.
Delta Zeta, Aurora-
Editor, Women's
League, Advisory
Board, O.T. Club



Vanni, Robert E.
Detroit, Michigan
Physical Education
Asst. Athletic
Trainer, Physical
Education Club, Phi
Sigma Epsilon,
Student Council



Vickers, Gary F.
Port Huron,
Michigan
Jr.-Sr. High



Vinsang, Edythe M.
Inkster, Michigan
Early Elementary
Modern Dance
Club, Delta Sigma
Theta, History Club



Walters, Gerald Lee
 Flint, Michigan
 Industrial Arts
 Zeta Chi Sigma,
 Industrial Arts Club

Warnemuende, Carolyn
 Munger, Michigan
 Occupational
 Therapy
 O.T. Club, Square
 Dance Club

Waterhouse, Margaret Jeanne
 Ferndale,
 Michigan
 Jr.-Sr. High

Wernet, Ruth Barbara
 Davisburg
 Michigan
 State Limited
 State Limited,
 Newman Club

Westfall, Arlene

Whitaker, William
 River Rouge,
 Michigan
 Business
 Administration
 Arm of Honor

White, Patrick S.
 East Lansing,
 Michigan
 Business
 Administration

Wick, Robert L.
 Dearborn, Michigan
 Secondary
 Education

Wiggins, Claude M.
 Dearborn, Michigan
 Secondary
 Education
 Inter-Varsity,
 History Club,
 English Club

Wimbish, Phyllis Bernice
 Detroit, Michigan
 Early Elementary
 Delta Sigma Theta

Windom, Virgil Estell, Jr.
 Flint, Michigan
 Business
 Administration
 Track, Football,
 Choral Union,
 Varsity Club,
 Omega Psi Phi

Wolfe, Gerald
 Center Line,
 Michigan
 Jr.-Sr. High
 Sigma Tau Gamma

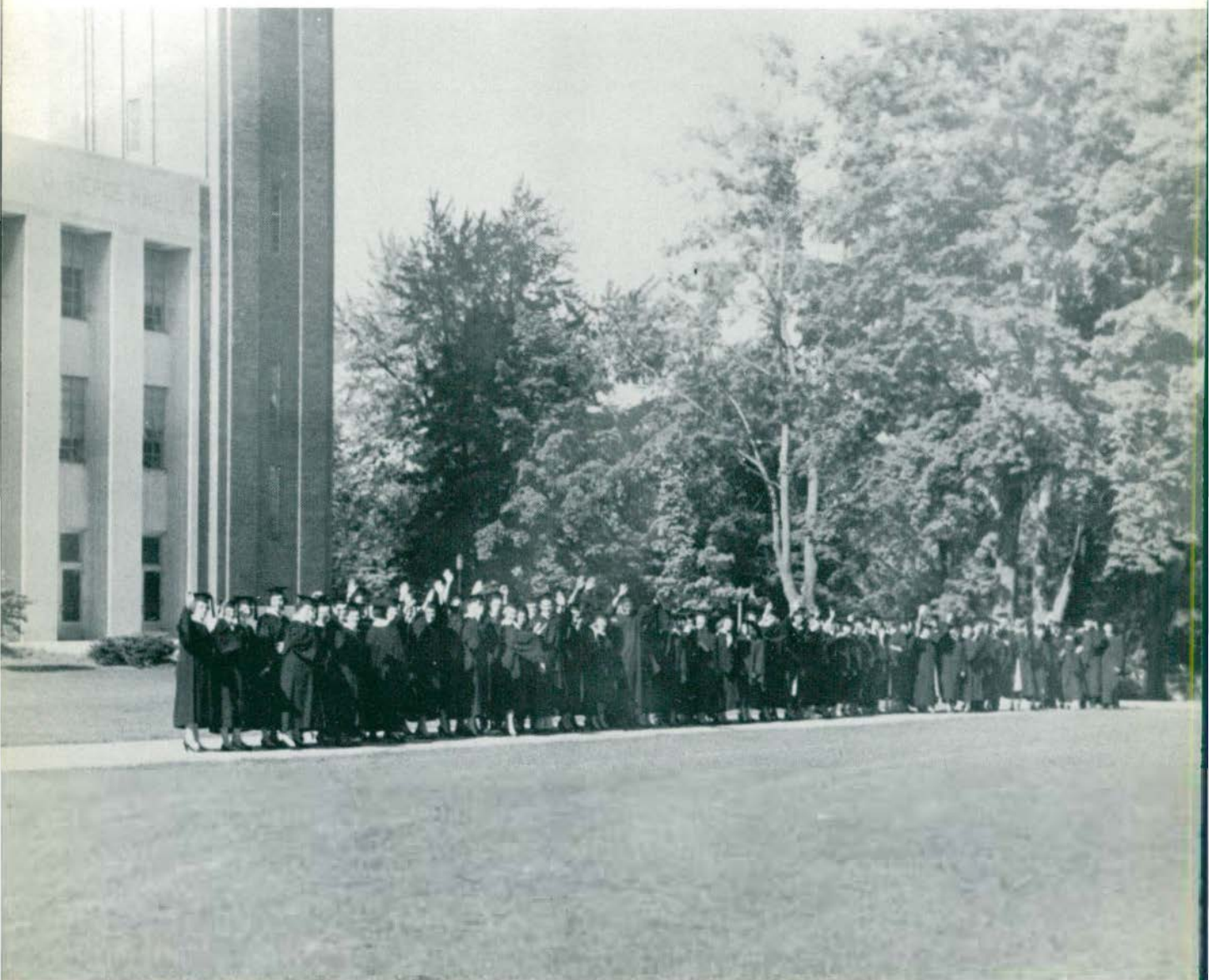
Wolff, Marvin Herman
 Detroit, Michigan
 Jr.-Sr. High

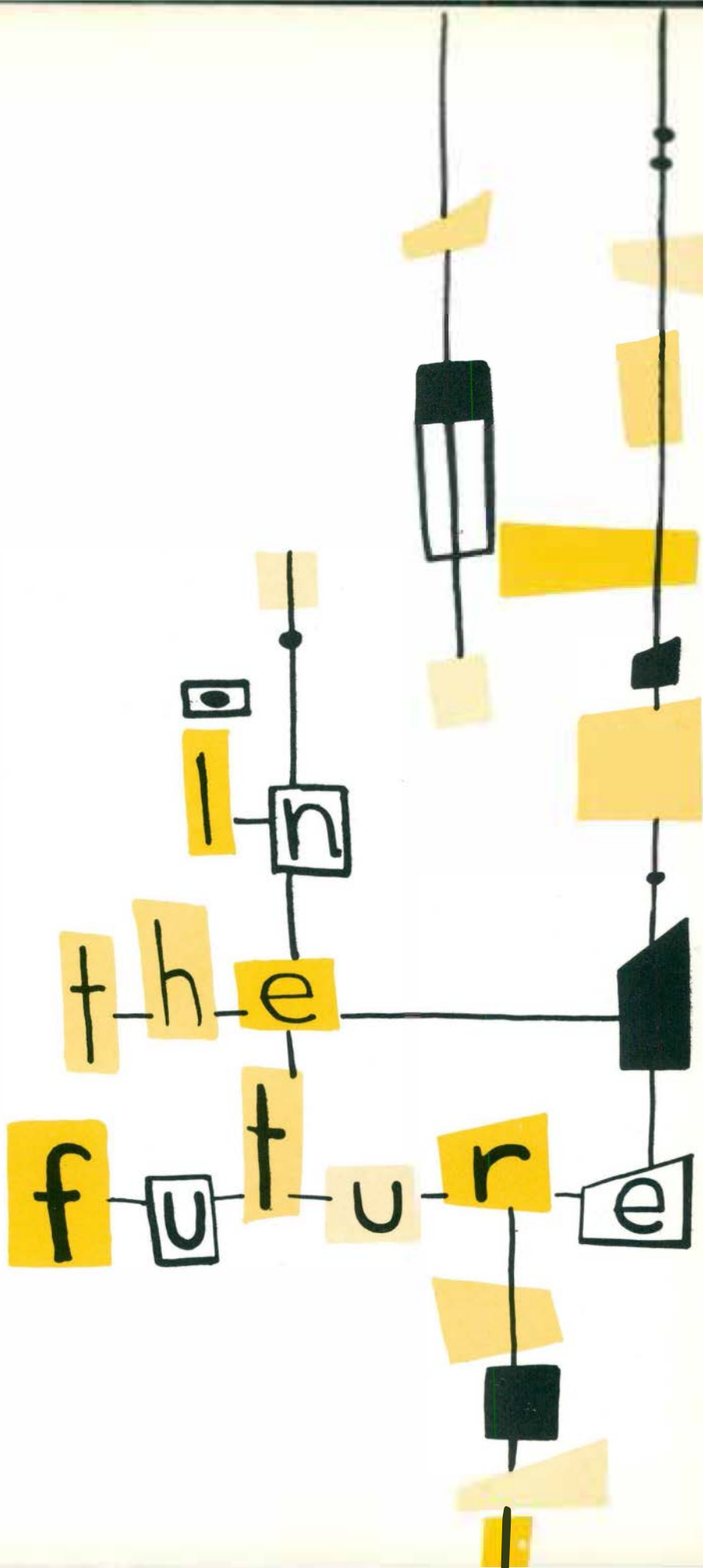
Wright, Bettye
 Ann Arbor,
 Michigan
 Early Elementary
 Alpha Kappa
 Alpha

Yates, Gordon Dennis
 Birmingham,
 Michigan
 Jr.-Sr. High
 Senior Class Pres.,
 Sigma Tau Gamma,
 Student Council,
 Munson Dorm
 Council

Last, but not least . . .

Alexander, Charles
Armstrong, Mina
Austin, Dorothy
Ballou, Harold
Beauvais, Jane
Best, Marguerite
Bowers, Athella
Buck, Ruth
Chisnell, Beverly
Colley, Donna
Cunningham, Mary Ann
Davis, Glenn
Edens, Lillian
Emerson, Ree
Farkas, Lester
Fillmore, Donald
Freel, Claude
Gauntlett, Arlene
Gilbert, Lillian
Green, Dorothy
Hafer, Robert
Hays, Yutha
Haywood, James
Hazen, Rupert
Heaton, Lilly
Henry, Cecil
Joyce, Beulah
Judd, Evelyn
Judson, Richard
Karp, Irene
Kennedy, Donald
Kilby, Cleone
Lesotte, Joyce
McAllister, James E.
McCabe, John
McLain, Roy
McMahon, Lambert
McNamara, Grace
Maas, Phyllis
Madigan, James
Mathews, Leota
Meade, Jeannine
Meeks, Edith
Millard, Robert
Miller, Phyllis Powers
Moaven, Hassin
Moore, Richard
Myers, Gerald
Norman, Carrie
Nowland, Devota
O'Brien, Carl
Olson, Mildred
Ostrander, Betsy
Pinney, Louise
Price, Harold
Reaume, Alice
Reid, James
Reiff, Dorothy
Rich, Vera Mae
Sellstron, John L.
Simpson, Lou Ella
Steenburg, Lita Grace
Stuteville, Evelyn
Tarbutton, Richard
Tarrant, Jerry
Taylor, Rex
Trinkle, Irene
Wallace, Marian
Williamson, Evalena
Zill, Kenneth





In the future . . .



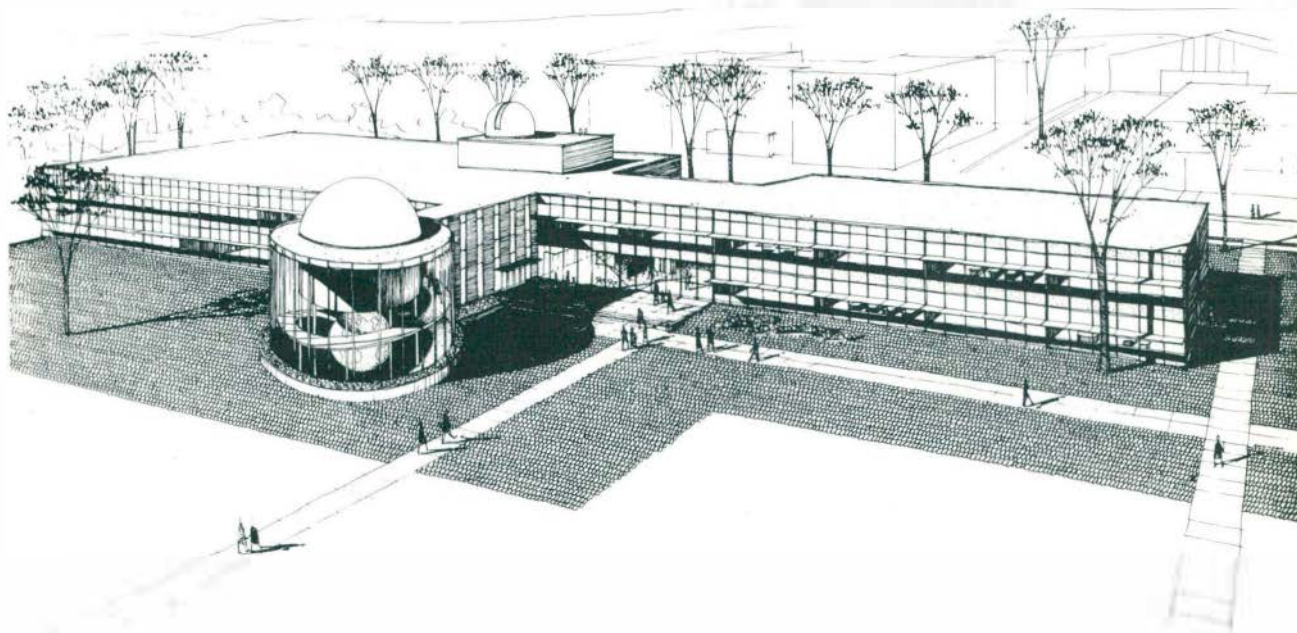
Pine Grove Terrace

1955 and 1956 have brought many changes to the campus of Michigan State Normal College. One of the new girl's dormitories, Goddard Hall, was opened in December and another girl's dorm is under construction, the first unit of a complex which will house many.

Also completed was the married student's housing, Pine Grove Terrace. Six units providing 72 apartments are available to married students of Michigan State Normal. All apartments are completely furnished.

The illustration below is the architect's drawing of the new science building.

The construction of the first unit has already begun.





The architect's drawing of the new girls' dormitories.



Goddard Lounge.



The exterior view of Goddard.



The dining hall.

Index

A.C.E.	66	Lambda Iota Tau	65
Alpha Gamma Upsilon	84	Library Club	38
Alpha Kappa Alpha	72	Lutheran Students Association	59
Alpha Sigma Tau	73	Mathematics Club	38
Alpha Xi Delta	74	Men's Union	23
Arm of Honor	85	Modern Dance Club	40
Art Guild	32	M.S.N.C. Players	46
Aurora Staff	50	Munson House Council	30
Band	121	Mu Phi Epsilon	67
Basketball Team	101	Natural Science Club	40
Baseball Team	115	Newman Club	60
Brown House Council	25	Normal News	52
Canterbury Club	57	Occupational Therapy Club	40
Centro de Espanol	32	Omega Phi Psi	89
Cheerleaders	105	Orchestra	122
Chemistry Club	32	Panhellenic Council	70
Choral Union and Choir	122	Phi Mu Alpha Sinfonia	67
Christian Science Org.	57	Phi Omega	68
Christian Youth Fellowship	58	Phi Sigma Epsilon	90
Concepts	54	Physical Education Club	42
Cross Country	100	Pi Kappa Delta	65
Delta Sigma Epsilon	75	Pi Kappa Sigma	78
Delta Sigma Phi	86	Pi Omega Pi	68
Delta Sigma Theta	76	R.O.T.C.	47
Delta Zeta	77	Senior Class Officers	132
Der Deutsch	34	Sigma Nu Phi	79
English Club	34	Sigma Tau Gamma	91
F.B.L.A.	34	Sigma Sigma Sigma	80
F.T.A.	36	Sophomore Class Officers	126
Football team	96	Special Education Club	44
Forensics	44	Stoics	66
Freshman Class Officers	126	Students Activities Committee	21
Gamma Delta	60	Student Council	20
Goddard House Council	26	Student Court	21
Golf Team	110	Student Religious Association	61
Goodison House Council	27	Tau Kappa Epsilon	118
History Club	36	Tau Sigma Chi	93
Home Economic Club	38	Tennis Team	110
Interfraternity Council	82	Track Team	105
Intervarsity	58	Varsity Club	115
Jones House Council	28	Veteran's Association	48
Junior Class Officers	126	Wesley	59
Kappa Alpha Psi	87	Women's League Advisory Board ...	22
Kappa Delta Pi	64	Women's League Executive Board ...	22
Kappa Phi Alpha	88	Women's Recreation Association ...	48
King House Council	29	Zeta Chi Sigma	94

Student Directory

Ackerman, Lynn	34, 79
Adams, Richard	138
Addis, Edith	27
Adler, Donald	94, 126
Adler, Laurel	133
Agopian, Dick	92
Agre, Chrystial	64, 138
Ainsley, Patricia	73
Albright, Gerald	90
Alchalabi, Abdul	32, 38
Alchin, Don	44, 88, 105, 106
Alcini, Rosemary	74, 138
Alcott, William	126
Aleks, Lois	44
Alexander, George	40
Alexander, Rosemary	138
Alford, Thomas	30, 44, 65, 82, 89
Allen, Frank	133
Allen, Jim	92, 96, 105, 106
Ambrose, Florence	51, 138
Anderson, Charles	32
Anderson, Jane	29
Anderson, Joan	44, 48, 56
Anderson, Peter	138
Anderson, Theodore	25
Anderson, Virginia	32
Andre, Eileen	32, 74, 138
Andrews, Don	90
Antisdell, A. E.	44
Appleton, Robert	25, 40, 59, 91
Aprill, Joan	138
Arlen, Alice	22, 70, 79, 138
Arlen, Richard	44, 57, 65, 68, 93
Armstrong, Joyce	32, 138
Armstrong, Patricia	133
Arnold, Belva Storey	38, 138
Asper, Carmelita	76
Atkinson, Tom	68, 93
Aton, Phyllis	40, 138
Austin, Bill	91
Ausum, Donna	75
Ausum, Mary	67, 138
Babbitt, Holt	34
Babcock, Basil	138
Babcock, Bob	91
Babcock, Donald	47, 82, 86, 138
Babcock, Flora	138
Babcock, Kathy	79
Bade, Martha	40, 138
Bailer, Edmund	90
Bailey, Zanola	40, 51, 76, 138
Baird, Doreitha	76
Baker, Doris	139
Baker, Virginia	36
Bakhaus, Elaine	139
Baldrige, Philip	67, 133
Baldwin, Gloria	133
Bales, Ronald	90
Banacki, Betty Jean	139
Barden, Margie	34
Barker, Lois	58, 61
Barkus, Don	84, 139
Barrow, Robert	34
Barwinski, Pat	75, 139
Basel, Barry	96, 99, 118, 139
Basile, Nick	94
Batalucco, Roseann	32, 79, 139
Bates, Barbara	20, 28, 70, 73
Bates, Joan	34, 75
Bates, Judy	22, 74
Bates, Lott	46
Baughman, Jean	34, 40
Beach, Gurney	100, 106
Beale, Peter	36
Becker, Bob	101, 118
Becker, John	92
Becker, John	94
Bednarz, Lawrence	139
Begola, Elizabeth	32
Bell, Barbara Jo	79, 133
Benish, Olga	36
Bennett, Kenneth	56, 59, 91
Bennett, Leslie	139
Bennett, Patricia	34, 40
Benson, Mary Jane	44, 48
Benton, Dorothy	44, 57, 65, 139
Berbaum, Gene	94
Berger, Ed	115
Berger, Robert	32
Bergman, George	106
Bernhardt, Phyllis	139
Berkich, Ed	88, 115
Best, Mary Alice	139
Beuschlein, Harold	32, 139
Binns, Barbara	77
Bird, Errolyn	42
Birkle, Bill	115
Birnbaum, Jerry	47, 106
Black, Jolan	40, 44
Blank, Ronald	67
Blazer, Constance	40, 139
Block, Leonard	88
Bloomer, Marion	68
Bloomer, Royce	139
Blunt, Augustine	67, 87, 133
Boggs, Ted	93, 133
Bogoyan, Jack	32
Bohn, Robert	90
Bolser, Donna	59
Bond, Betty	44
Booker, Nellie Mae	139
Boone, Daniel	133
Borden, Marshall	82, 85
Borgstadt, Peggy	42, 74, 118
Borswald, Nadine	74, 126
Borwick, Donna	21, 139
Bostwick, Lee	86, 133
Bovee, Marion	40
Bowen, Jean	20
Bowen, Marolin	26, 38, 120, 139
Boyce, Ruth	36
Boyd, Eloise	58
Boye, Dale	93
Bozoyan, Jack	68
Bozoyowski, John	84, 133
Bradbury, Marjorie	44
Bradley, James	42, 140
Bradow, Marvin	59, 91
Brazil, Willie	72
Breaugh, John	84
Brehmer, Ann	59
Breuninger, Phyllis	22, 27
Brewer, Richard	30
Bridge, Ron	20, 47, 92, 140
Briggs, Connie	38, 75
Brishkorn, Leon	82, 94
Britz, Emma	140
Broderick, Patricia	79
Broge, Marilyn	140
Brossia, Paul	23, 40, 59, 140
Brown, Billie Jay	140
Brown, Evelyn	22, 27, 75
Brown, Jim	92
Brown, Sandra	105
Brown, Sherri	38, 60, 121
Brown, Sue	34
Brown, Walter G.	89, 96
Brueckner, Theora	133

Bryant, Amyrillas	72	Craver, Pauline	27, 141
Bryant, Bunyan	87	Crawford, Barbara	40, 46
Buck, John	92, 100, 105, 106	Crego, Ondalee	141
Bucksar, Dick	36, 44, 46, 68	Crickmore, Charles	44, 101
Burger, Dorthea	57, 140	Crowell, Gary	105
Burke, Donald	140	Culver, Gorman	34, 47, 141
Burkin, Marilyn	40, 44	Cunningham, Lawrence	115, 133
Burns, Robert	140	Cunningham, Mary	38
Burrell, Don	21, 25, 82, 92	Curry, Essie	141
Burris, Aldred	57, 68, 93	Curtindale, Virginia	34, 58
Burris, Sue	40, 46	Curtis, Betty	80
Bush, Peter	133	Curtis, Lee	34, 40
Butler, Bonnie	79	Cushnack, Violet	51, 61, 77
Butler, Ethel	40, 76, 140	Czanko, Jim	101, 105, 115
Butts, Joanne	140	Daly, Dick	44, 92, 96, 105
Butts, Tom	68	Dame, Irene	141
Byrne, Donald	140	Dank, Bob	96, 118
Callahan, James	140	Darago, Edna	36, 40, 61
Callahan, Paul	110	Davenport, Linda	28
Campbell, Mary	57	Davidson, Frankie	70, 79
Campbell, Ray	106	Davidson, Marietta	70, 76, 141
Canizales, Carlos	32	Davis, Glen	90, 100, 105
Cantelmo, Anna	60	Davis, Grace	60
Cardinal, Cynthia	60	Davis, Jennie	70, 72
Carpenter, C.	44	Davis, Paul	32
Carroll, Herman	89, 96	Davis, Sally C.	22, 44, 73
Carson, Bud	110	Davis, Sally E.	34, 75
Cashman, Mary Jane	77, 105, 118	Dawkins, Dave	84
Cerneant, Fred	44, 86, 140	Dawson, Anna	80, 141
Chadbourne, Judy	27, 44, 47	Day, Albert	106
Chamberlain, Marjorie	42, 44, 57, 58	Day, Gerald	141
Charron, Bonita	140	Dean, Ed	88
Chase, Marcia	79	Decker, Hilton	32
Chattman, Marva	38, 76	Dedoes, Judy	40, 105
Cheatle, Margaret	20, 80	Dehnke, Ron	46, 141
Cheek, Loreen	80, 105, 140	Deibel, Lou	30, 91
Chennault, Jonas	87	Deimen, Lawrence	38
Chiravola, Joan	27, 34, 64, 65, 73, 140	Dennison, Ellen	44, 48, 141
Chowen, Rosemary	26, 77	Deno, Pat	44, 48
Christie, Charles	85	DeRose, Dominic	141
Christensen, Jim	96	Devendorf, Ann	38, 142
Churchill, Mae Bell	140	DeWitt, Caroline	142
Clancy, Shirley	27, 42, 60, 75	Diaz, Ross	21, 142
Clark, Kathryn	27, 141	Dickelman, Robert	142
Clark, Leo	87	Didon, D.	115
Clark, Marilee	34, 38	Diegel, Martha	60
Clark, Marilyn	44, 48	Dieter, D.	61
Clark, Paul	32	Dina, J. Adebayo	32, 142
Clay, Betty	133	Dittmar, Arthur	40
Clayton, Lillian	44	Dittmar, Charles	67
Close, Alice	78	Dixon, Chester	89, 96
Close, John	85	Docherty, Isabelle	28, 48
Clough, Ida	141	Docking, Bob	52, 53, 91
Cocroft, Christine	26, 27, 133	Dodge, Janet	40
Cole, Jacquelyn	61	Donamacker, F.	25
Collard, Peggy	141	Dondero, D.	57
Collier, Carol	26, 72, 133	Donnelly, Arthur	34, 47, 142
Collins, John	94, 141	Doty, Marjorie	58, 142
Comfort, Earl	96	Douglas, Robert	106
Conachen, Gerald	94, 141	Drake, Mary	29, 44
Conde, Carol	26, 44	Drake, Nella	38, 48, 65
Conklin, Carolyn	21, 65, 74	Dreher, Marilyn	80
Constas, Maria	22, 67	Dreiman, Ed	91
Cook, Charlene	44	Driskell, Lois	72
Cook, Vern	91	Duby, Joseph	142
Cooper, Carole	80	Duchesneau, Theresa	60
Cooper, Sharon	105	Dulmage, Jody	27, 44, 48
Cornell, Joan	141	Dunbar, Norma	36
Cortes, Joaquin	32	Dunham, Dave	47, 88
Coscarely, Gerald	44, 60, 91	Dunlap, Laura	40, 46, 105
Cosey, Lillian	40, 72	Dunn, Marilyn	36
Cosey, Yvonne	72	Durham, William	36
Cosgad, Tom	84	Dwyer, Jeanette	27, 42, 79
Courtright Tom	34, 60	Dyck, Margaret	70, 77
Coutadides, May	34	Dzendzel, Georgianna	57
Coville, Diane	44, 48, 141	Eardley, Amy	34, 57
Cox, Jim	86	Earle, Bill	85
Craig, Kayl	44	Easterling, Vern	94, 142
Crane, Monalee	40	Egner, Richard	92

Eichbricht, Shirley	36, 61	Graff, J.	106
Eichhorn, John	38, 86, 126	Graham, William	23
Ekstrom, Swen	142	Gray, Richard	94
Elder, Ruth	67	Grebe, Betty	59, 143
Elgie, Douglas	91	Green, Emma	143
Elliot, Carl	96	Green, Willie	87, 143
Emerick, Nan Sue		Greener, Edward	101
Endahl, Lenore	32	Greenfield, Marjorie	67
Eppler, Robert	25, 32, 91	Greenleaf, J.	47
Eraybar, Ahmet	32, 38	Greenwood, Jackie	26
Ernst, Phyllis	22, 44, 48, 105	Gretzinger, Bill	34
Eschenburg, Jeanne	38, 75	Grice, Helen	36, 44, 56
Eseman, Carol	44, 48, 142	Griffin, Gerald	47
Eslinger, Pat	28, 142	Griffith, Kay	27
Ethridge, Donald	142	Griffitts, Jacquelyn	73, 144
Evans, George	84	Grigorian, Jacob	143
Everard, J. Larry	32, 142	Grindstaff, Edith	134
Fairbanks, David	142	Grinenko, Don	84
Fantow, Clare	73, 142	Grissel, Grace	
Farkas, Leaster	67	Grotwhol, John	105
Faust, Elaine	36	Groves, Mike	25, 92, 120
Feamster, Phil	84	Gulhood, Carolyn	25
Fenton, Keith	86	Gulish, Eugene	36
Fenzel, Joyce	80	Gural, Jim	94, 144
Ferguson, David	20, 47, 68, 142	Gustafson, RoseMarie	42, 144
Fertell, Lee	85	Haas, Constance	134
Fillmore, Maurine	36, 58	Hachigian, Alice	38
Finnie, Al	84	Haddix, Shirley	22, 28, 126, 144
Firestone, Jack	84	Hadley, Marjorie	77
Fischer, Georgena	59	Hadr, Ameer	79
Fisher, Marita	74, 132, 142	Haque Nancy	46
Fisher, Yvonne	73, 143	Hallaq, Issa	32
Fitgibbon, Donald	90, 143	Halle, Bob	51, 91, 120
Fitzpatrick, William	68, 93	Halle, Bruce	144
Flanders, Nancy	28	Hallgren, Constance	27, 40, 60
Fogle, Alen	94	Haman, Janice	61, 56, 73
Fokens, Louise	36	Hamelin, John	144
Foley, Barbara	80, 133	Hamilton, Joan	26
Ford, Jean	26, 77, 134	Hancock, Thelma	76, 144
Ford, Nancy	56, 59, 143	Hancock, Tom	86
Ford, William	25	Hanson, Donovan	67
Forton, Jane	143	Hardin, Jim	85
Fox, Patricia	143	Harding, Hal	85
Fox, Ron	46	Hargraves, Ralph	144
Fraunheim, Joe	88, 105, 110	Harris, Donna	38
Frazier, Ann	75	Harris, Joe	184
Freeman, Donna	40	Hart, Dorothy	32
French, Dale	88	Hart, Ralph	90
Freund, Neal	68	Hartman, Dolores	32, 34
Friedly, Shirley	59, 70, 78, 143	Hasenclever, Herb	82, 84
Fromm, Anita	40	Hasler, Arlene	27, 74
Frye, Katherine	34	Hastie, Joan	134
Fuller, Mary Ellen	75	Hathaway, Mary	79
Fullerton, Ray	68	Hawarny, Phillip	44, 91, 144
Fulton, Richard	50, 94	Hawkins, Shirley	36
Fundukian, Mae	34, 143	Hayden, Janet	144
Furay, Mike	86	Haynes, Donna	79
Furstenberg, William	42, 44	Hays, C.	44
Furton, Ken	34, 60	Haywood, Jim	96, 105, 118
Gabrys, JoAnne	60	Heck, Bill	34, 60
Gagnon, Maurice	143	Height, Antoinette	38, 72, 134
Gainsley, Linda	74	Hellum, Greta	40
Gambill, Mary Jo	20, 74, 143	Heminway, Elizabeth	144
Gamble, Nancy	36	Hemingway, Eugene	94
Garbrecht, Dorothy	74, 143	Henry, Roscoe	86
Gay, Dick	106	Heraper, Judith	134
Gaylord, Barbara	29	Herbert, Jim	110
Geolski, Ted	85	Hershey, Harvey	85, 132, 144
Gerweck, Richard	143	Hettinger, Nancy	38
Gilman, Ester	143	Hickman, Beverly	121
Glenn, Gretchen	143	Hicks, Roger	92
Gokey, Gil	90	Higgins, Holly Ann	70, 78
Goodhue, Hal	88, 115	Hill, Audrey	32, 56
Goodrich, Sally	44	Hill, Carol	38, 75
Gordon, Elizabeth	44	Hilla, Ronald	144
Gormley, Theresa	32, 73	Hiller, Anne	134
Gould, Maryalice	67	Hixon, Terry	94
Gould, Robert	44, 86, 100, 143	Hobbs, Patricia	77, 144
Grabowski, Jan	77	Hobson, Donald	89

Hoffman, Florence	38	Kelley, Ken	25, 88
Hoffman, Martha	40	Kellogg, Merlene	36
Holappa, Fred	144	Kelly, Hugh	59
Holden, Jim	92	Kelly, Joyce	145
Holley, Lynn	75, 105	Kelly, Valda	76, 134
Hollifield, Doris	38, 40, 70, 76	Kennedy, Patricia	77
Hollifield, Robert	87, 105	Kennedy, Ronald	84, 145
Holst, Jacquelyn	36	Kenney, Shirley	145
Holzimmer, Gerald	32, 58	Kessler, Mary Ann	145
Homeister, Nancy	42	Kessler, William	134
Homer, Raymond	134	Kidle, Jane	74
Honchell, Jim	88	Kiessel, Barbara	70, 77, 145
Hood, Joyce	29, 79, 144	Kilmark, Joan	60
Hood, Mary	144	Kilpatrick, Charlie	91
Hooper, Joseph	145	Kimura, Ella	26, 73, 134
Horton, Carol	40, 59	King, Charleen	34
Horvath, S.	61	King, JoAnne	145
Hosie, Ann	22, 79	King, Roberta	77, 146
Hovermale, Tom	58	Kinnaird, William	146
Howell, Bess	44, 48, 145	Kinsey, Lyle	94, 146
Howell, Marilyn	36	Kirchoff, R.	61
Hughes, Alice	73, 145	Kirk, Julie	29, 146
Hughes, Lloyd	59	Kirschke, Jane	134
Hugill, Beverly	38	Kisella, Charlotte	74
Hummel, Barbara	42	Kitson, Jim	21, 23, 82, 91, 120
Hunger, Gerry	58	Kleinsmith, Don	23, 25, 57, 68, 88, 146
Hunt, Mary Kay	75, 145	Kleinsmith, Ed	57, 68, 91
Hunter, William	145	Knutson, Sheila	32, 57
Hurbis, John	20, 47, 53, 90, 145	Kokinakes, Frances	79
Hurt, June	80	Komenaga, Nancy	44
Hutchinson, Mary	36, 40	Konezal, Norm	84
Imo, N.	61	Koppin, Joyce	36
Inklovitch, Nina	73	Kosky, Joyce	48
Innes, Elaine	58	Koss, Ben	92
Ireland, Fred	102	Krause, Keith	47, 86, 110
Irwin, Chuck	34, 90	Kreiger, C.	106
Jablonski, Paul	23, 25, 60, 91, 120	Kropfeld, Joe	23, 94
Jackson, Beverly	44	Krzyz, Frances	146
Jackson, Paul	58, 67	Kubicki, Stan	84
Jackson, Richard	94	Kuhl, Janet	36
James, Charles	96	Kukla, Irene	44
Jameson, Philip	145	Kukovich, William	134
Jamieson, Bill	32, 88	LaCrosse, Joan	40, 79, 146
Janicki, Lillian	27, 67, 79	LaFever, John	120
Janke, Ann	26	Lake, Janice	146
Janter, Marlene	29, 44, 48, 77	Lakin, Bob	91
Jasper, Joretta	61, 75	Lamb, Jack	88, 105, 115
Jelascity, Joyce	27, 70, 80	Lamberson, Charles	146
Jenkins, Byron	58	Lambert, Laura	36, 40
Jensen, Ken	86	Larsen, Dan	21, 23, 86, 120
Jesiek, Pricilla	26, 36	Larson, Linnea	40
Johnson, Annabelle	57	Larson, Marie	80
Johnson, Betsy	57	Laubengayer, Bill	47
Johnson, Gwen	34, 73, 118, 145	Lavoie, Dorothy	42
Johnson, Joan	121	Lavoie, Tom	134
Johnson, Larry	30, 91	Lowney, Pat	84
Johnson, Sandra	40, 59	Lawson, Ray	84, 105, 110
Jones, Zenobia	40	Learnont, Richard	85, 134
Jordan, Janet	42, 74	Leck, Richard	34
Josey, Virginia	40, 48, 72, 145	LeDuc, Arlene	134
Jubenville, Joyce	65, 73, 145	LeMay, Charles Robert	134
Judson, Richard	54	Lemmer, Mary Lou	20, 27, 38, 40, 51, 75
Kaczorowski, Shirley	44, 48	Lemon, Lou	120, 146
Kaiser, Bill	34	Lentz, Elizabeth	22, 29, 56
Kalitta, Laura	61, 65, 78	Lepak, Joe	86, 115, 126
Kamiqake, Elsie	26, 134	Leslie, Alva	26
Kando, Libby	126	Leutheuser, Louise	38
Karp, Irene	40	Levack, Joe	47, 90, 146
Karstetter, Dolores	22, 40, 50	Levely, Virginia	146
Kaselemis, Constantine	42	Leverton, Valerie	28, 77, 118, 119
Kassabian, Gary	32, 68	Lewelling, William	85, 146
Kavie, Joanne	67, 145	Lewis, Ben	115
Kawamoto, Mae	36	Lichtenstein, Marvin	30, 36, 91, 146
Keating, Kerry	92, 96, 98, 105	Lidgard, Pat	40, 80
Kehrer, Carol	64, 145	Liebenthal, Ray	34
Keith, David	145	Lillis, Sandra	28
Keller, Bruce	90	Lindemann, Jane	22
Keller, Karen	50	Lindgren, Charlotte	146
Keller, Ralph	88	Lingle, Ray	88

Linkletter, Bob	86
Lipka, Mary Louise	135
Liretti, Beverly	135
Liston, Mary Jo	74, 146
Livingway, Esther	34
Locas, Claude	146
Logie, Betty	80, 146
Love, Barbara	42
Love, Eugene	44, 65
Lowey, Betsy	22, 50, 56
Lukaszewski, Darlene	60
Lumetta, Paul	32
Lutz, Priscilla	29
Lymperis, Helen	73, 147
Lynch, Eddie	88
McBroom, Alan	61
McCollum, Bill	147
McCormick, Tom	98, 105
McCullough, Bob	3, 86, 96, 105, 118
McCrumb, Bernadette	147
McDonald, Barbara J.	34, 40, 73, 135, 147
McDonald, Larry	115, 147
MacDonald, Lois	44
MacDonald, Marian	22, 147
McGill, John	94
McIlrath, Joyce	26, 34
McIntyre, Donna	44, 48, 101, 147
McKay, Lois	22, 29, 79, 147
McKibbon, Alvin	91
McKibbon, Joyce	77, 147
McKinney, Theodore	47
McLarty, William	90
MacLennan, Mary	40, 58, 147
McMath, Julie	68, 147
McNamara, John	147
McPherson, Sandra	135
McQueen, Winifred	36
Mack, Don	101
Mackes, Fern	42
Mackey, Ray	25, 30, 92, 147
Mader, Jane	28, 60
Madias, Nick	88
Madson, Barbara	65, 147
Magary, Barbara	67
Maher, Geraldine	77
Mahoney, Peggy	126
Malin, Joyce	20, 26, 28, 44, 65
Mancell, Robert	58
Mandt, Dorothy	34
Mank, John	85
Manley, Frank	101
Mann, Pat	22, 46, 75
Mannise, Mary	78
Manych, Nick	115
Marcetti, Joanne	36, 44, 60
Marco, Larry	23, 86, 120
Marco, Mercedes	80, 118
Margitan, John	30
Marley, Lillian	51, 73, 147
Marr, Dick	96, 105
Marriott, George	67, 147
Marshall, J. U.	147
Martin, Barbara	74
Marx, Julianna	26
Mase, Loretta	135
Mason, Robert	36
Masters, Martha	79
Masterton, Jean	40
Mastoria, Chrissy	34, 54, 147
Mathis, Lawrence	38
Matthews, Donald	96, 102
Mawbry, LeRoy	96, 105, 148
Max, Kay	44
Mayra, E.	44
Mead, Donald	94
Mead, Warren	44, 65, 68, 93
Meadows, Phyllis	40, 64, 148
Medley, Bill	86
Megahan, Beverly	80
Memhardt, Donna	79
Mendelsohn, Esther	34
Menefee, Blaine	94
Mennis, Beverlee	77
Metzdorf, Tom	20, 23, 88
Miechiels, Marilyn	79
Mikesell, Ronald	46, 58
Millar, Hope	29, 80
Miller, Bernard	115
Miller, Ellen	148
Miller, Jack	148
Miller, Jerry	96, 97, 105
Miller, Martha	58
Miller, Mary Jane	36, 42, 50
Mills, Beverly	40
Milne, Marilyn	38
Minick, Merlyn	32, 148
Mink, Shirley	148
Minor, Harlan	88
Mirer, Robert	96
Miron, Ronald	94
Mitchell, J. Austin	148
Mittlestat, Bob	115
Mix, Kenneth	44
Mobley, Donald	148
Moehl, Margaret	148
Mohamed, Subhi	32, 38
Montenegro, Mario	32
Montooth, Marilyn	58, 148
Moore, James	86
Moore, Ritter	57
Moore, Shirley	148
Moran, Martha	42, 56, 148
Moreau, Dick	32, 38
Morris, Beverlee	44, 148
Morrow, Ralph	52, 53, 68, 93
Moseley, Dick	115
Moseley, Joan	135
Mouganis, Harriet	79, 148
Moynes, Mary Ann	38
Munro, Mary	36, 75
Murcia, Maria	32
Murdock, Jim	88
Murphy, Ann	74
Murphy, Vera	78, 148
Murphy, William	58
Murray, Ann	135
Myrstik, Gail	28, 75
Nalbandian, Richard	85
Nass, Harold	32
Navarre, Dale	84
Nedeau, N. Charles	101
Neering, Anne	34, 40
Nelson, Arlene	74
Nelson, Barbara	27
Nelson, Jack	44
Nelson, Mollie	58, 148
Nelson, Robert	148
Newcombe, F. Marie	149
Newlin, Kaye	44
Nicholas, Dale	86, 96
Nichols, Barbara	32
Niehaus, Paul	68, 93, 149
Niedorf, Lynn	94
Nisbet, Diane	80
Nolan, Ann	22, 36
Northrup, Kathy	22, 50, 56, 73
Norton, Joanne	149
Nowak, Elizabeth	44
Nuttle, Dan	34
Oakes, Allan	90, 149
Oakes, Marie	149
Obermeyer, Maye	44
O'Connell, Daniel	84
O'Hara, Dan	34, 149
O'Hare, Edward	135
Ohlinger, Richard	135
Ohmedo, Teofilo	32
Ohsowski, Charlene	48

Olah, Irma	22, 74, 149
Oliver, Justin	149
Opie, Gloria	44
Orantes, Mauncio	32
Orlando, Joe	60
Orr, Carolyn	46, 75
Ortez, Rosario	32
Osgood, Dolores	27, 38, 74
Ostby, Gretchen	40, 75
Ostermyer, Ray	88
O'Toole, Maureen	20, 27, 74
O'Toole, Michael	60
Ouellette, Dave	36
Oxender, Pearl	36, 78
Pacioni, Andy	85
Pacioni, Eddie	85
Paige, Charles	115
Paliaroli, Gino	102
Papke, Joan	61
Papp, Gene	86
Pappadakis, Nick	44, 92, 101
Pardee, Margaret	135
Parker, Frederick	149
Parker, Joanne	135
Parker, LeAnn	29
Parker, Lucy	26, 44, 48, 80
Parker, Richard	149
Park, Dale	90
Parks, Dave	44, 92, 96, 101, 105
Parks, JoAnne	50, 51
Parsons, Leonard	149
Passfield, Nancy	38
Patrick, Tom	60
Patrick, Robert	101, 106
Patton, Claire	149
Pastor, Kathleen	79
Patterson, Ralph	82, 87, 106
Payne, Dorothy	34, 57, 68, 149
Peake, Ray	68, 88, 135
Peck, Duane	46
Pekuri, Nancy	44
Pelaez, Gustavo	34
Peliotes, Therese	36, 40, 105
Pellerin, Roy	51, 106
Penny, Edward	149
Pepper, Sandy	74, 120
Perona, Jack	96
Perry, Don	110
Perugi, Carole	36, 38
Peruski, Leonard	85
Peters, Marilyn	44, 48
Peters, Pat	34
Peterson, Dolores	75
Peterson, Karen	
Petros, Sally	36
Petzold, Joyce	22, 40, 74
Picard, Clyde	149
Picard, Doreen	22, 50, 51, 77, 149
Piccinni, Frank	30, 90
Piccinni, Marvin	94
Pickell, Jim	30, 92
Pierce, Agnes	149
Pierce, P.	78
Pierson, Diana	46
Pike, Judi	22, 70, 80
Pinkerton, Nancy	80
Pioch, Edmund	93
Pitton, Claudette	32, 51, 149
Pocklington, Peggy	40, 44
Poe, Mary Jean	135
Poet, Donna	26, 48
Poling, Shirley	36, 46, 80
Poole, Barbara	26, 75, 135
Popp, Marilyn	40, 150
Porter, Norma	70, 72
Potts, Guydeane	79
Pounds, Don	59, 100
Powers, James	94
Powers, Milton	150
Prater, Nancy	40, 74, 150
Pray, Dick	91
Price, Gaynell	58
Price, Hal	21, 85, 105
Prichard, Doris	40, 150
Prichard, Lawrence	57
Provan, Graham	36, 150
Provenza, Frank	150
Pryce, Sally	60
Puche, Roberto	32
Puls, Charlotte	77
Purcell, Chuck	47
Purcell, Jim	92
Rafein, Leo	91
Rafferty, Earl	93
Rafferty, Fred	93
Ramsey, Gerald	85
Ramsey, Sharon	70, 74, 150
Rando, Thelma	48
Rankin, Joanne	150
Rankin, Joyce	150
Ranspach, Mary	26
Reed, Robin	46, 79
Register, Beverly	44
Rehberg, Loraine	27
Reindel, Howard	100, 106
Reines, Jose'	32
Reiser, Tom	135
Renton, Shirley	150
Renwick, Donna	73
Reske, K.	61, 150
Rice, Arlene	29, 79
Richards, Mary Lou	34
Richmond, Alice	150
Riederick, Marjorie	150
Rikley, Carol	135
Rima, Yamal	32
Rinckey, Duane	93, 115
Rippetoe, Joe	36
Risdon, Paul	93
Ritz, Edward	135
Riukin, Fredric	150
Robb, Richard	94
Robbins, Jim	32, 34
Roberts, Fred	100
Roberts, George	32
Roberts, June	32, 56
Roberston, Earle	86
Robertson, Roy	44, 65, 87, 150
Robinson, Betty	68
Robinson, John	106
Roe, David	30, 74
Rogers, Brian	36
Rogers, Chester	150
Rollet, Ray	105
Romanow, Stella	38, 150
Root, Duane	20, 88, 105, 106
Rose, Charles	46
Rose, Jerry	91
Rose, William	21, 23, 25, 91, 120
Rosebrough, Sadie	76, 136
Roselle, Joan	136
Rosenbusch, Doris	40, 77
Ross, Marilyn	150
Rowe, James	32, 90
Rowe, William	150
Ruark, Don	151
Rudenko, Alex	151
Rufus, Carl	91
Ruggles, Laura	44
Rupp, Darlene	36
Russell, D.	94
Russell, Dean	136
Rutila, Robert	94
Ryan, Mary	34
Ryder, Patricia	40
Rydholm, Barbara	22, 77
Saam, Roy	84
Sachs, Janet	26

Sagamang, Beverly	26, 80, 136
Sala, Ed	86
Sala, Eugene	86
Salow, Jerry	32, 151
Sample, Donald	23, 25
Sanders, Russell	92
Sanderson, Judy	29, 80
Santer, Ken	91, 100, 105, 106
Santer, Richard	100, 106
Santer, Tom	86
Sarkany, Leo	151
Satile, S.	94
Saunders, Richard	151
Sauter, Charlotte	34, 79
Schaffer, Gay	40, 121
Schandevel, Jim	88, 105, 115
Schauer, Robert	40, 52, 93
Scheffier, B.	100
Schelke, Gretchen	61
Schickler, Mary	74, 120, 151
Schiefer, Marty	34
Schild, Sarah	136
Schindler, Daniel	136
Schlabitz, Gisela	80, 120, 136
Schlachter, Janice	68, 75, 151
Schlichting, Jack	85
Schmauch, Jerry	90, 151
Schmitt, Barbara	151
Schneider, Peter	47
Schoenals, B.	64, 151
Schober, Alfred	94
Schomaker, Sally	61
Schomaker, Thomas	90
Schroeder, Shirley	38
Schuler, Carol	58
Schuler, Mary	38
Schuler, Richard	58
Schultz, Dave	100, 105, 106
Schultz, James	44, 102
Schultz, Virginia	36
Schupback, Linda	126
Schwartz, Sallie	61
Schynecki, Rosemarie	80
Sciarini, James	68, 136
Scivage, Evelyn	77
Scott, Elizabeth	44
Scrafano, Carmen	96
Scrivens, Mary Jo	78, 151
Searle, Dan	115
Searles, Mary Jo	22, 27, 75
Seavey, Pat	77
Sederlund, Pat	36
Seils, Bertha	59
Seng, Kenneth	88, 151
Sewell, Lena	36, 61
Seyferth, Sharon	36, 40
Shara, Tom	91, 136
Shaw, Janet	40, 151
Shea, Robert	151
Shepard, Carol	77, 151
Sherfey, Mary	21, 74, 151
Shimada, Frances	27
Shonk, Mary Ann	40, 64, 70, 75, 151
Shorter, Delores	40, 72
Shulstad, Perry	92
Signor, Beth	38, 64, 65, 78, 152
Signoret, Engrique	32
Simmons, Joanne	40
Simpson, Levi	106
Simon, Damon	68, 152
Simonds, David	84
Simons, Marian	59
Sinift, Juanita	38, 40
Skinner, Charles	36
Slepsky, Lawrence	44, 115, 152
Sloan, Dean	23, 25, 92, 106
Slosson, Maureen	79
Smirnovs, Mary	34, 36, 38
Smith, Dean	92
Smith, Jerry	44, 91, 152
Smith, Judy	34
Smith, Lucius	152
Smith, Marian	48, 80
Smith, Marjorie	38
Smith, Theodore	67, 94, 136
Smith, Warren	152
Smoker, Bob	47, 88
Snell, Shirley	36
Sobol, Paul	106
Sobolewski, Norbert	30, 91, 121
Sokarda, Anne	79
Soo, HungKwong	68
Spangler, Jack	86
Sparks, Anne	34, 36, 72
Spehar, Pauline	29
Spencer, Wayne	20, 23, 25, 92
Sperling, William	152
Spicuzza, Lucia	22
Spieth, William	152
Spitale, Paul	92, 101
Stack, June	75
Staley, Bob	92
Stamos, Barbara	29, 32, 74
Stanley, Bill	85
Stanton, Ina-Rae	46, 79
Steen, Joe	85
Steiner, Joyce	42
Steinhart, Earl	152
Stellers, D.	102
Stelzer, Miriam	27, 50, 75
Stenger, Robert	100
Stephen, Marcia	74
Stephens, Imajean	72, 152
Stephenson, Verna	72
Stepp, E. Joann	152
Stevens, Bill	106
Stevens, Jim	101, 110
Steward, Robert	36, 152
Stewart, Jim	94, 126
Stiles, Constance	34
Stilwell, Fred	88
Stinger, Bob	86
Stinson, Patricia	38
Stinson, Sallie	80
Stoelton, Lynn	96
Stoneking, Carole	32
Stott, Frank	60
Straub, Phil	92
Striebel, Ursula	36
Strohl, Wayne	90
Stutcher, Frank	88
Stwenson, Verna	36
Sugiyama, Kathleen	26, 136
Sullivan, Patricia	152
Suminski, H.	152
Summers, Barbara Waldorf	64, 74, 152
Sumner, Richard	94
Surtman, Herb	34, 36
Sutton, John	58
Swenson, Fern	51
Swindan, Pat	79
Swoish, Mary Lou	60
Symington, Sally	80
Tabris, Michael	106
Taffoli, Laura	22, 80
Takara, Kenji	152
Tamblyn, Marty	73, 152
Tanabe, Helen	152
Tank, Mary Jane	59
Tarbutton, Dick	21, 85
Tarlow, Martin	40
Taylor, Carl	34, 40, 82, 83
Taylor, Margaret	36
Taylor, Marilou	22, 27, 75
Taylor, Mary A.	42, 153
Taylor, Ron	105, 110
Tecmire, Jerreld	88
Temple, Dessalee	29, 80

Tenney, Dorothy	34, 36	Warnemuende, Karolyn	40, 154
Terry, Doris	51, 153	Warren, Ralph	32
Terry, Mary S.	153	Washington, Charles	89
Thackham, Lois	26, 77, 120, 153	Waterhouse, Margaret	154
Thackham, Richard	153	Waters, Barbara	70, 75
Thomas, Cecile	77	Watkins, Everett	82, 84, 136
Thomas, Jack	87	Watson, Charles	56, 61
Thomas, Mary	153	Watson, Susan	79
Thomas, Sandra	79	Watts, Beverly	58, 61
Thompson, George	96, 105	Webb, George	46
Thompson, Helen	27, 79	Weber, Gene	60
Thompson, Jim	20, 23, 30, 92	Weber, Stella	44, 65
Thompson, Joseph	59	Wedge, Jerry	96, 105, 115
Thompson, June	136	Weintraub, Adele	28
Thompson, Kenneth	46	Weissert, Marcia	36
Thompson, Lyman	58	Welle, Charles	32, 34, 59
Thompson, Peggy	46	Weller, Janet	136
Thornberry, Ronald	106	Wendling, Don	92, 110, 136
Thrush, Janet	52, 153	Werner, Janet	22, 29
Todd, Robert	136	Wernet, Ruth	154
Tomassini, Lorraine	44	Westfall, Arlene	59, 154
Tompkins, Nila	67	Wetherell, Dick	68, 105
Tonks, Ronald	44, 88	Weymouth, Bob	82, 91
Toonder, Bernice	73	Whelan, Jack	30
Torres, Ona Lucia	32	Whitaker, William	154
Toth, Barbara	105	White, Eva	20, 65
Toth, Lillian	27, 44	White, Marlene	34, 79
Townsend, Kathy	46	White, Patrick	154
Trabue, Sharon	42	Whitney, Judy	21, 22, 40, 79
Tragge, Jane	80, 153	Whitson, Duane	35
Traum, Bill	105	Wick, Robert	154
Travis, Beverly	153	Wigent, Helen	79, 137
Tresh, Barbara	60	Wiggins, Claude	154
Treuino, Hortencia	32, 59	Wigner, Larry	66
Trinkle, Irene	21, 29, 74	Wilbanks, Claude	47, 110
Tucker, Dan	88	Wilde, William	137
Tucker, Noble	34, 68, 153	Wiles, Jeannine	44
Turnbull, Thomas	90	Wilkins, Doug	90, 96, 97, 98, 99, 105
Turner, Billy	86	Williams, Charles	92
Turner, Don	86	Williams, Mary	78
Turner, Josephine		Williams, Raymond	87, 102
Tutich, Dick	96, 105	Williamson, Charles	64
Tyrrell, Elizabeth	22, 27, 42, 79	Williamson, Imogene	73
Tyson, John	32, 54	Wilson, Iris	137
Tyus, William	93	Wilson, Janet	57
Upthegrove, Fred	153	Wilson, Judy	22, 28, 75
Valentine, Ron	34, 110, 153	Wilson, Laurence	52, 53, 68, 93, 120
Vandercar, Barbara	78, 153	Wilson, Tom	84
VanDen Branden, Rene	153	Wimbish, Phyllis	76, 154
VanderMeer, Jane	22, 40, 50, 77, 153	Windom, Virgil	89, 96, 97, 98, 154
VanGilder, Janice	44, 48	Winkley, Jerry	32, 34
Vanni, Robert	44, 90, 153	Wintrose, David	96, 126
VanWagner, Hal	136	Wiseman, Charles	91, 137
Velis, Jim	85	Wiseman, Doug	93
Velky, Marietta	36, 40	Witt, Audrey	32
Verhoeven, Margaret	48, 75	Wittig, Janice	70, 74
Vickers, Gary	153	Wolfe, Cean	79
Vidosh, Donn	96, 102	Wolfe, Jerry	91, 154
Vincent, Sharon	40	Wolfe, Phyllis	61, 73, 137
Vinsang, Edythe	40, 153	Wolff, Marvin	154
Volcheck, Joanne	36	Wolford, R.	94
Wadworth, James	58	Wolter, Jayne	44, 65
Wagh, Sita	42	Wood, Donald	94
Wagley, Joan	46	Wright, Bettye	72, 154
Wagner, Judith	26, 74	Wright, Robert	106
Wahl, Dick	96	Wright, Sue	59
Walainis, William	32, 40	Wright, Tom	34
Walker, Jack A.	31, 53, 91	Wrobel, Pat	44
Walker, Jack C.	93	Wyer, Richard	30, 47, 92
Walker, Luella	38	Yates, Gordon	20, 30, 91, 132, 154
Walker, Marianne	80	Zander, Burton	67, 120
Walls, Nancy	32	Zick, Marian	59
Walsh, John	102	Zickel, Dick	110
Walters, Gerald	154	Zickel, Jim	115
Walters, H.	94	Zimmerman, Geraldine	80
Wangberg, Nancy	28	Zitny, Jerry	20, 50, 90, 100, 105, 106
Ward, Sandra	42	Zumstein, Rosie	80
Ware, M. L.	60		